



Council Workshop Meeting

Addendum

Date: January 18, 2021

Time: 9:30 am

Location: Council Chambers - members participating remotely

Pages

4. Regular Items:

4.1. Private tree by-law update (CWC-01-21)

- | | | |
|-----------|--|----------------|
| <i>a.</i> | <i>Staff presentation regarding Private tree by-law update (CWC-01-21)</i> | <i>1 - 20</i> |
| <i>b.</i> | <i>Tree permit map (CWC-01-21)</i> | <i>21 - 21</i> |

City of Burlington Private Tree By-law 02-2020: Implementation Update

Steve Robinson, OALA, ISA, TRAQ

Manager, Urban Forestry

City of Burlington

Melissa Torchia, ISA, TRAQ, BHA

Supervisor, Forest Protection

City of Burlington



AGENDA

- Background
- Year to Date Experiences
- Program Successes
- Program Limitations
- Opportunities to Consider
- Breakout Room Discussion # 1
- Breakout Room Discussion # 2
- Next Steps



WHAT ARE WE TRYING TO ACHIEVE?

- Increase and maintain canopy cover City-Wide
- Address Climate Change Emergency
- Require a mechanism to promote the preservation of existing trees
- Establish a framework for tree replacement



STRATEGIC ALIGNMENT

Focus Area 3 - Supporting Sustainable Infrastructure and a Resilient Environment

- Top Priorities for Focus Area 3:
- Tree Canopy: Increase the tree canopy City-Wide
- Urban Forest Master Plan
- Consideration of Private Tree By-law

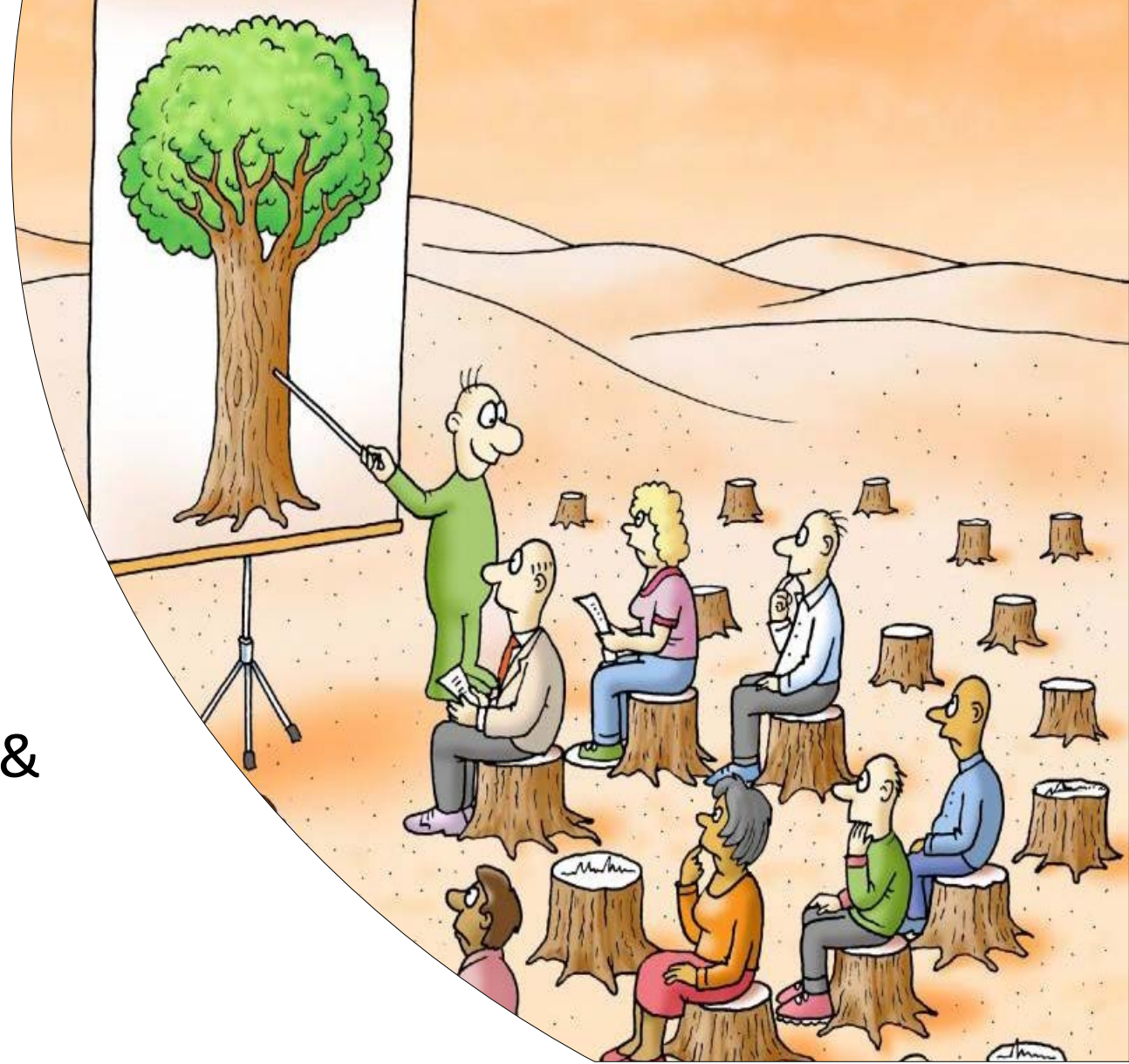


burlington.ca/vision2focus

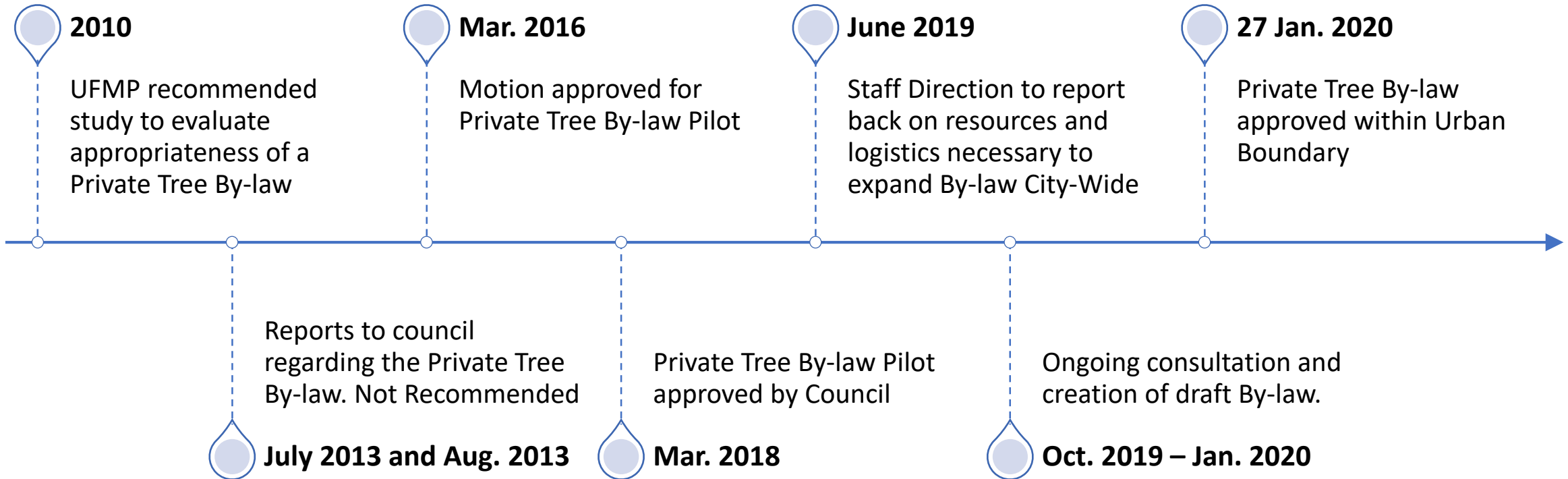


PUBLIC OUTREACH

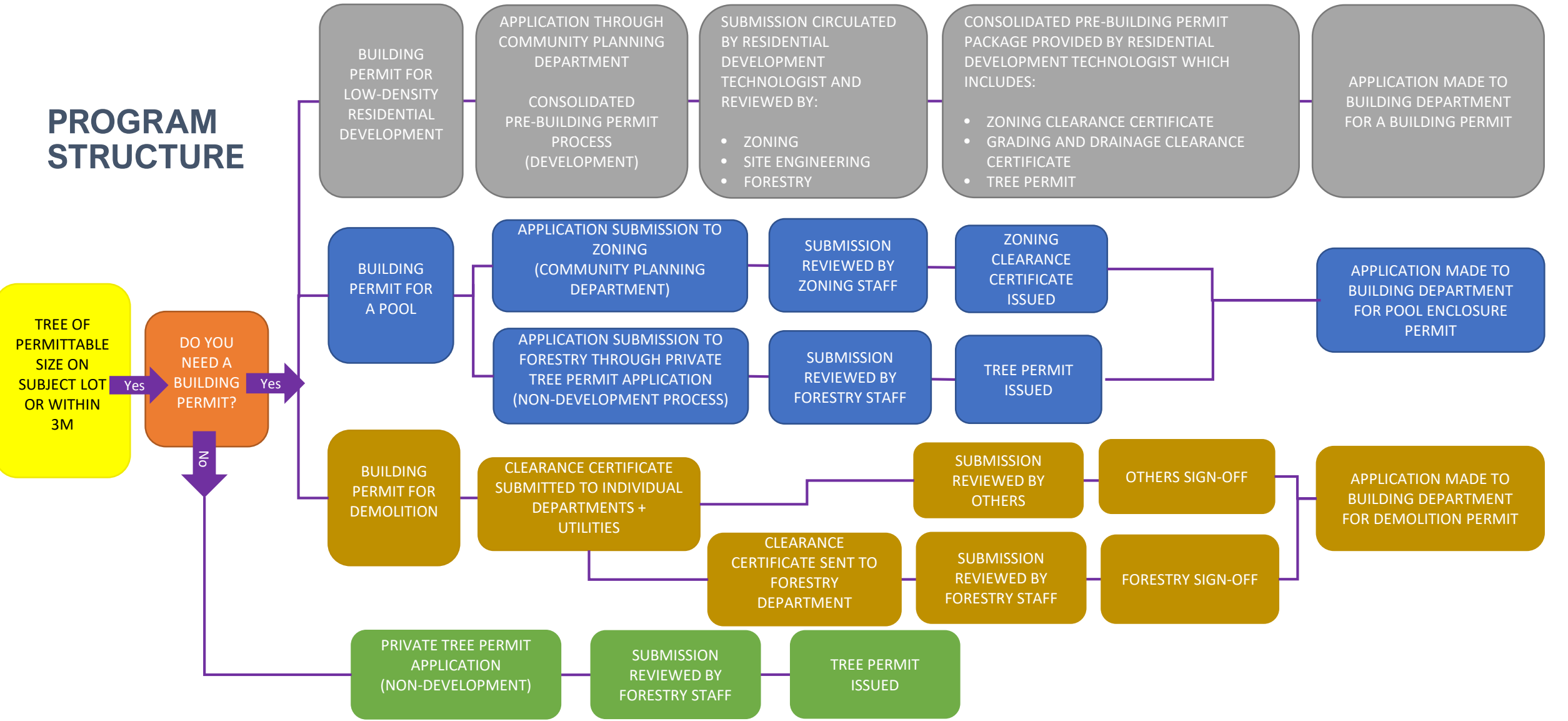
- Polarizing Paradigms:
 - Seeing the Forest for the Trees
 - Unintended Consequences
- Improved Community Engagement & Customer Experience



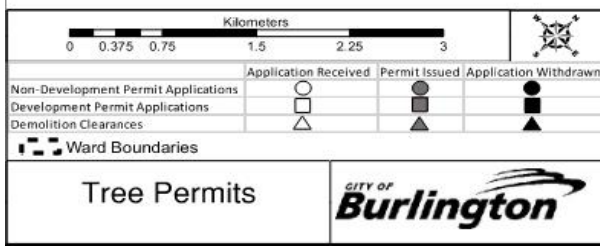
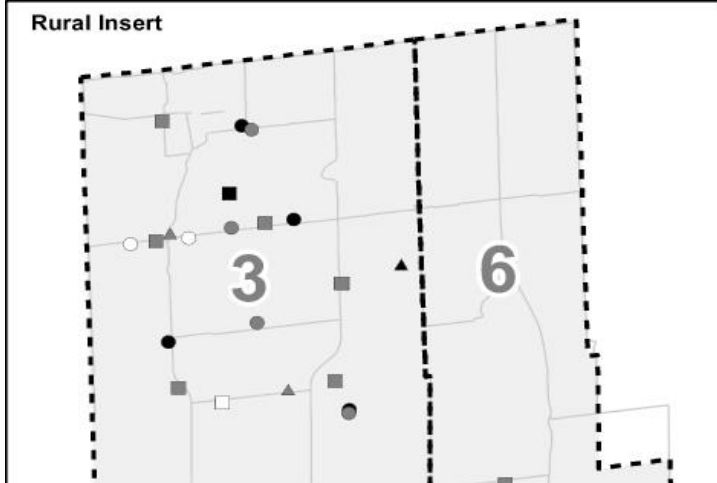
BURLINGTON BY-LAW HISTORY



PROGRAM STRUCTURE



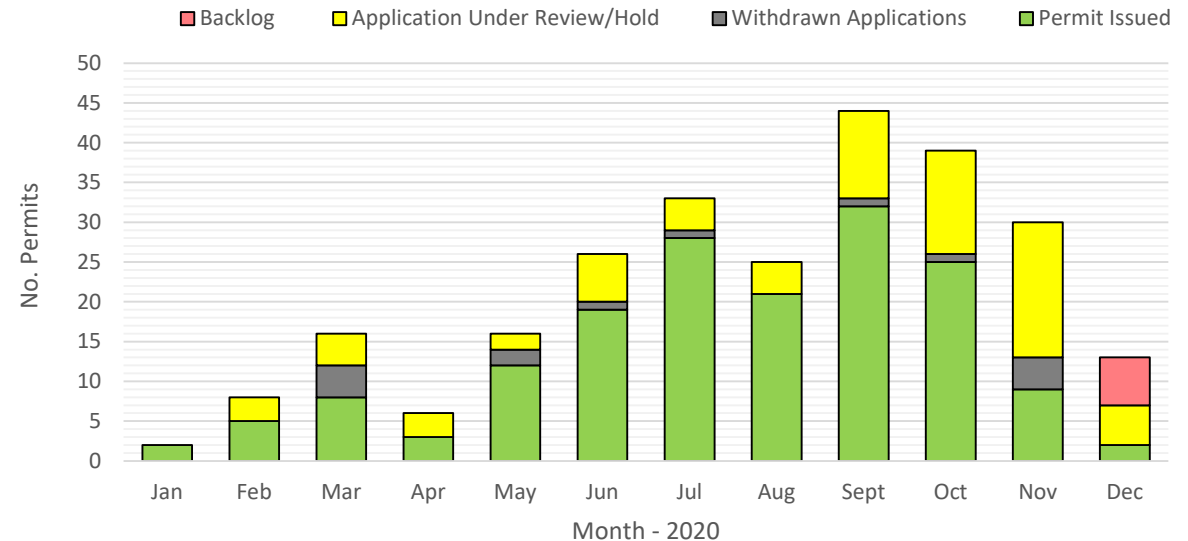
Rural Insert



YEAR TO DATE EXPERIENCE

As of December 31, 2020:

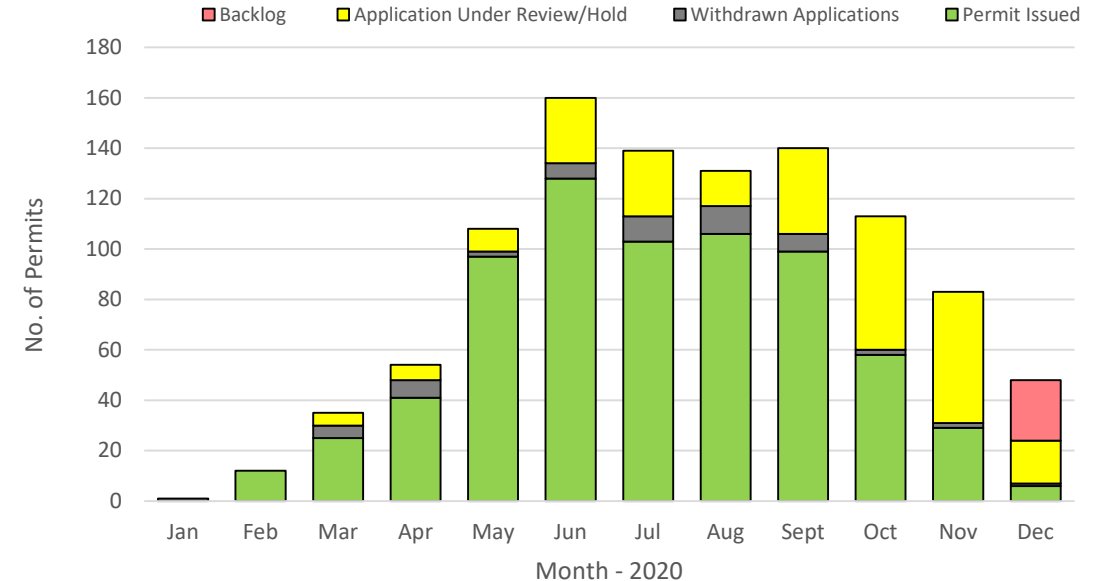
- 258 Development Tree Permit Applications
 - Decks, Pergolas and Gazebos
 - Additions and Garages
 - New Single-Family Dwelling
- 166 Tree Permits Issued Per Property
 - Resulted in 92 Tree Removals; and
 - 65 Tree Injuries
- 92 Applications Withdrawn, Under Review, On Hold or Back-log



YEAR TO DATE EXPERIENCE

As of December 31, 2020 :

- 1,024 Non-Development Tree Permit Applications
 - General Tree Removals
 - Pools, Patios & Landscaping/Hardscaping
 - Dead & Terminally Diseased Exemption
 - 2m of an Occupied Building Exemption
- 704 Tree Permits Issued
 - 1059 Tree Removals (71% exempt); and
 - 62 Tree Injuries
- 320 Applications Withdrawn, Under Review, On Hold or Back-log



YEAR TO DATE EXPERIENCE



Tree Replacement Plantings

- 784 Replacement Trees to be / or that have been planted on Private Property
 - \$313,600 Equivalent cash-in-lieu value
- Timeframe to plant tree(s) is one (1) year from date of permit issuance
- Majority of replacements are Cedar (*Thuja occidentalis*)

YEAR TO DATE EXPERIENCE

As of December 31, 2020 there has been :

- 65 Demolition Clearances Review Requests
- 99 Committee of Adjustment Applications
- 40 Pre-Consultation (CofA) Review Requests
- 66 Known By-law Infractions



YEAR TO DATE EXPERIENCE

- Provisions in place for those projects that fall under the purview of the *Planning Act*
- Coordination with Forestry occurs for planning applications which includes:

Application Type	2020 Applications
Site Plan (SP)	19
Minor Modification (MM)	3
Minor Development (MD)	6
Official Plan Amendment (OP)	3
Rezoning Subdivision (RZ)	4
Subdivision (SD)	1
Development Consultation – for Site Plans (DC)	32
Development Planning Consultation for Site Plan Amendment, Rezoning and Subdivision (DPC)	27



YEAR TO DATE EXPERIENCE

Engagement

- Rural Community
 - Meeting with the BARAAC took place November 12, 2020
- City Legal Department
 - Continued consultation with the City's Legal Department to review Program Limitations
- General Public
 - Continue to provide customer service to residents
 - Begin discussion to restructure and amend the Forestry Webpage and to update information pertaining to additional Forestry Sections which includes:
Forestry Operations and Forest Planning and Health



PROGRAM SUCCESSES



- Proactive versus reactive tree preservation
 - Sober second thought to tree removal
- Require applicants to be accountable for tree preservation
- Education and communication
- Compensation received for tree removals
 - Replacement planting or cash-in-lieu

PROGRAM LIMITATIONS



- Potential financial implications
 - Limitations based on current fee structure



- Staff Resources
 - Limitations with staff time to review various application types due to volume (e.g., Tree Permits, Demolition Clearance, CofA etc.)



OPPORTUNITIES TO CONSIDER

- Change view of responsibility of resource
- Restructure fee schedule
- Improved enforcement through additional authorities under the By-law
- Review Canopy coverage as Key Performance Indicator
- Improve customer experience through technological investments
- Improved follow up on replacement planting success



BREAKOUT SESSION #1

- HOW MIGHT WE...
- IMPROVE THE CITY'S PRIVATE TREE BY-LAW TO ADDRESS THE NEEDS OF THE CITY
 - WHY IS IT IMPORTANT?
 - WHAT IS STOPPING US?



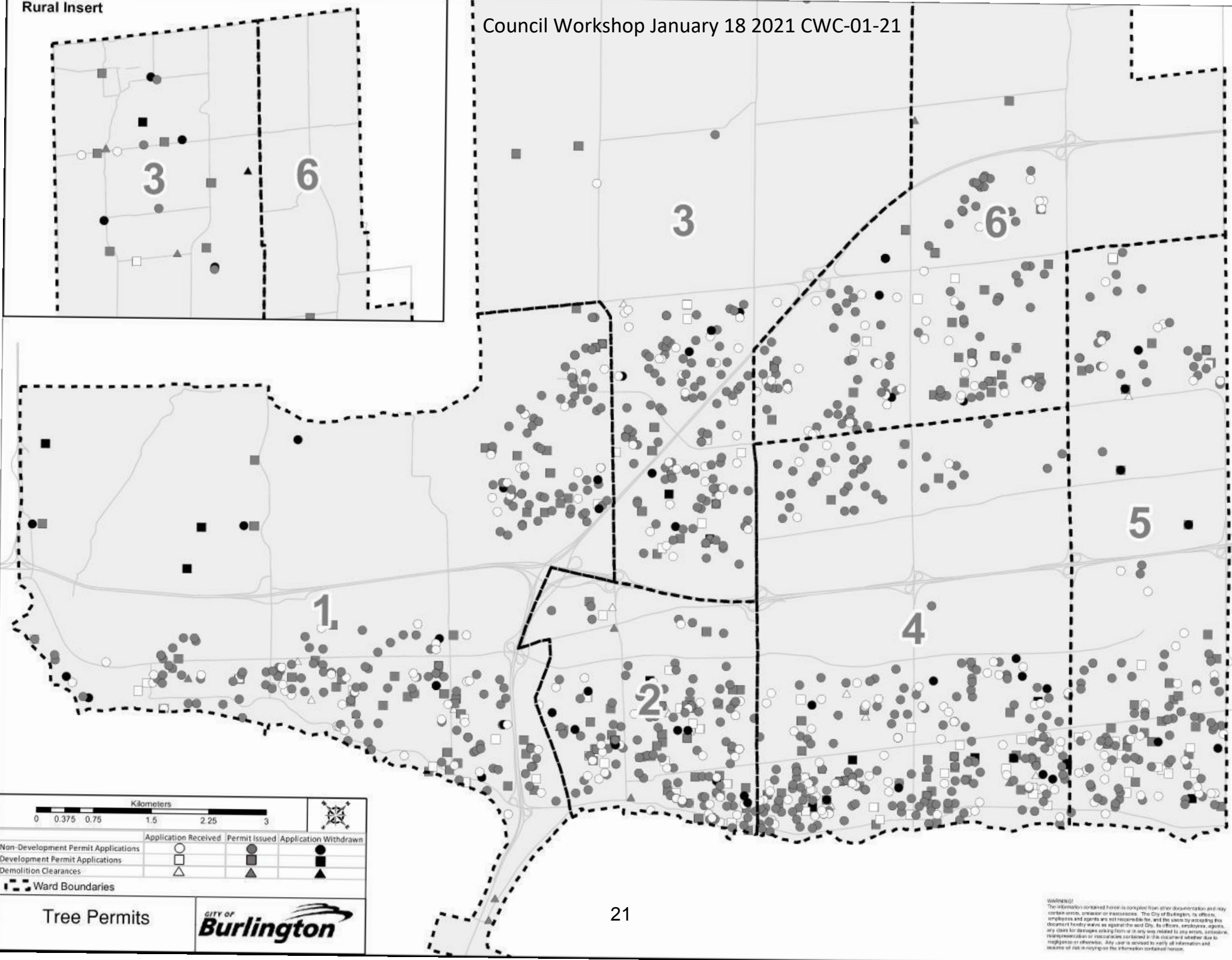
BREAKOUT SESSION #2

- HOW MIGHT WE...
- IMPROVE THE CITY'S PRIVATE TREE BY-LAW TO ADDRESS THE NEEDS OF THE CITY
 - BRAINSTORMING SESSION: GOOD | BETTER | BEST



NEXT STEPS

- Review and summarize results of the Council Workshop
- Prepare a Report for Committee/Council
- Continue Discussion with Rural Community
- Continue Discussion with City Legal Department
- Continue to provide Customer Service



Tree Permits

Ward Boundaries

Legend:

	Application Received	Permit Issued	Application Withdrawn
Non-Development Permit Applications	○	●	◐
Development Permit Applications	□	■	◑
Demolition Clearances	△	▲	◕

Scale: 0 0.375 0.75 1.5 2.25 3 Kilometers

City of Burlington

WARNING:
The information contained herein is compiled from other documentation and may contain errors, omissions or inaccuracies. The City of Burlington, its officers, employees and agents are not responsible for, and the users by accepting this document hereby make as against the said City, its officers, employees, agents, any claims for damages arising from or in any way related to any errors, omissions, misrepresentation or inaccuracies contained in this document whether due to negligence or otherwise. Any user is advised to verify all information and assume all risk in relying on the information contained herein.