

Emerald Ash Borer 2017 Strategy

Committee of the Whole

February 27, 2017

Prepared by: Barb Rabicki, Manager Urban Forestry



2017 Action Priorities

- City staff to assess street & park ash trees for treatment eligibility
- Street & park ash removals – 3,296 trees
- Boulevard stump removals – 700 stumps
- Tree replanting program – 715 trees
- Expanded strong communications program



EAB Plan Summary

	To date	2017	2018	2019	2020-2024	Total Program
Removals (# trees)	2,080	3,296	1,086	1,479	1,293	9,234
Replanting (# trees)	859	715	1,286	1,286	5,088	9,234
Total Costs	\$4.184M	\$1.40M	\$1.389M	\$1.48M	\$3.796M	\$12.25M *Including contingency (total program cost is \$13.46M)

Communications Strategy

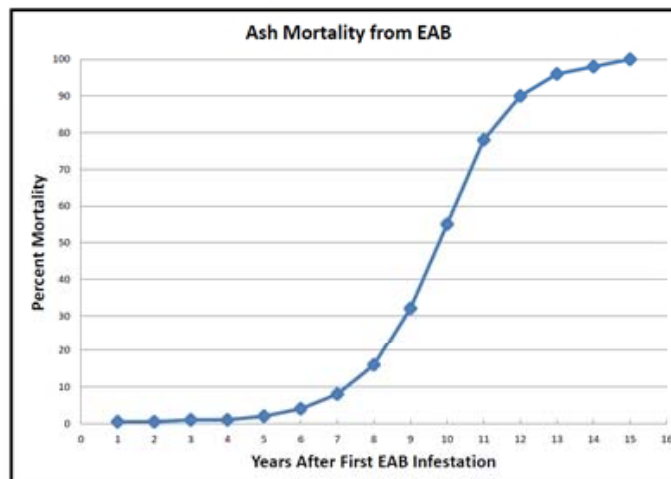
- **Portal** (public education; progress update)
- **Social Media** (promote “Burlington Talks Trees” and (information on Facebook & Twitter)
- **Print** (posters for “Burlington Talks Trees”)
- **Council updates**
- **Burlington Talks Trees Schedule**

Major Program Changes

- Tighter criteria to determine which trees to be treated
- Treatment of trees greater than 50cm dbh, plus streets that are primarily ash where trees greater than 40cm dbh will be treated
- Annual treatment of trees vs. bi-annual
- Proactive rather than reactive program
- Prioritization of street and park trees; focus on public safety
- Systematic, planned removals
- Comprehensive communications program



Ash Tree Mortality

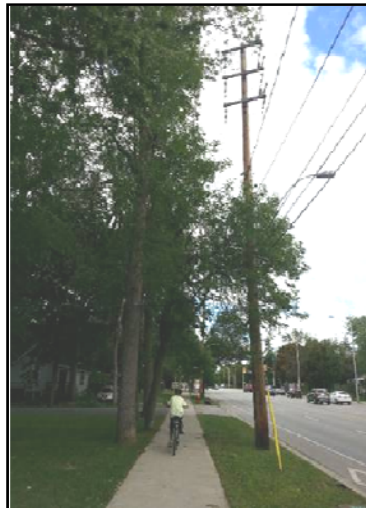


Risks – People & Property



The logo for the City of Burlington, featuring the text "City of Burlington" in white on a blue background.

Risks– Utilities



The logo for the City of Burlington, featuring the text "City of Burlington" in white on a blue background.

Risks – Woodlots & Private Properties

