

DOWNTOWN STREETSCAPE GUIDELINES

Heritage Burlington Advisory Committee

May 15, 2018



Where are we in the process?



What we heard:

- wider sidewalks where possible in the downtown
- an increase in the number of pedestrian crossings to help feel safe when crossing the street
- more garbage, recycling and compost bins
- more benches to sit and enjoy the downtown
- more greenery and street trees on downtown streets
- a style of furnishings that reinforces the main street character along Brant Street.

Vision statement:

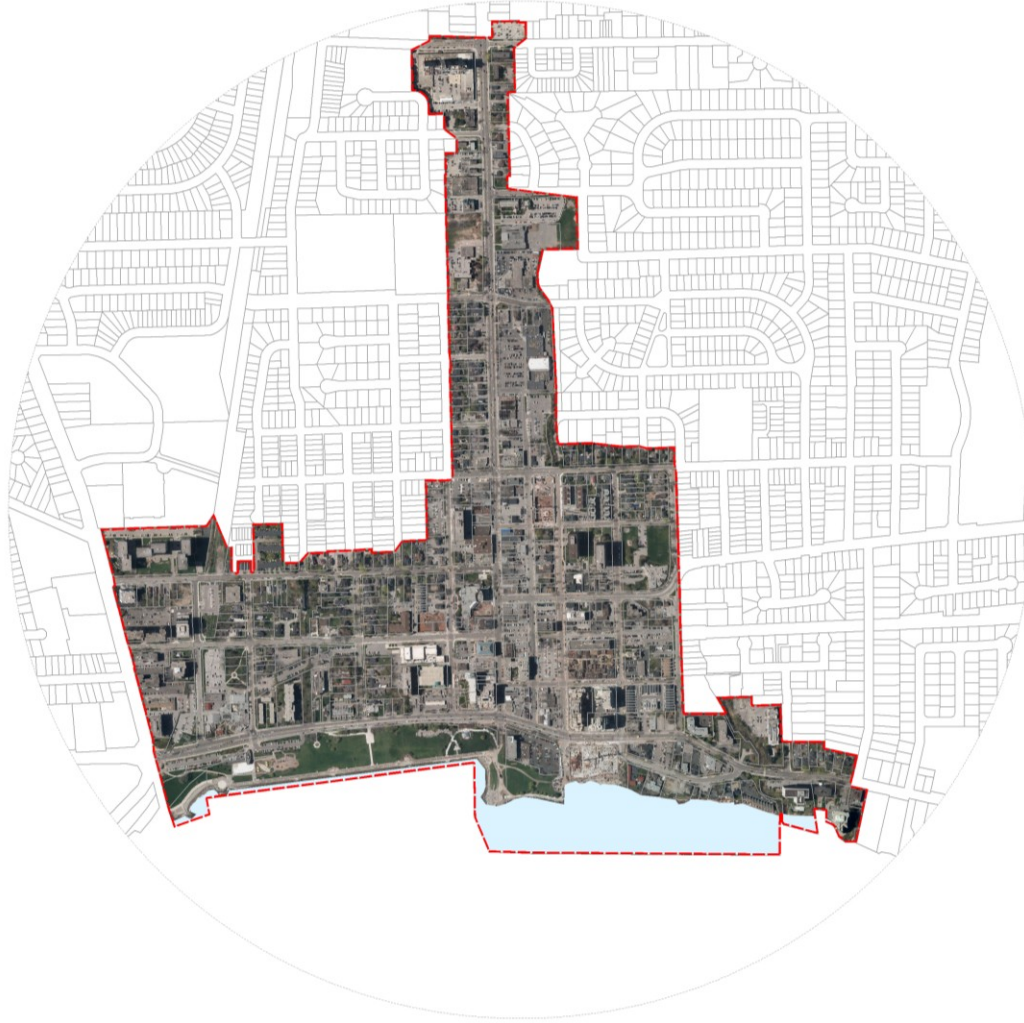
To enhance the public realm by creating a **high quality** downtown streetscape that is **attractive**, **pedestrian-friendly**, and supports **vibrant destinations**.

Guiding design principles:

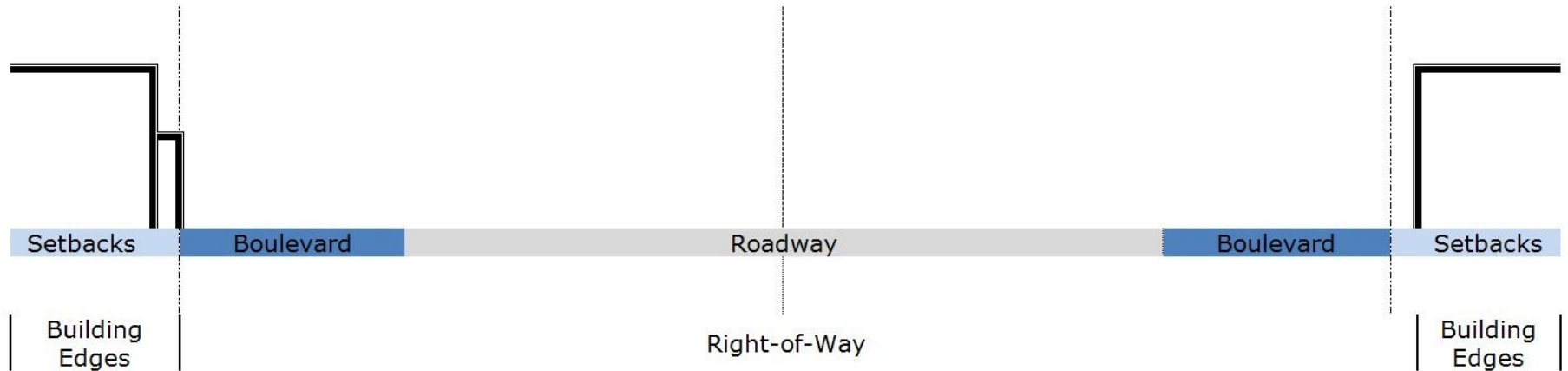
1. Pedestrian Focused
2. Green & Sustainable
3. Easy To Use & Equitable
4. Long Lasting
5. Connect & Integrate



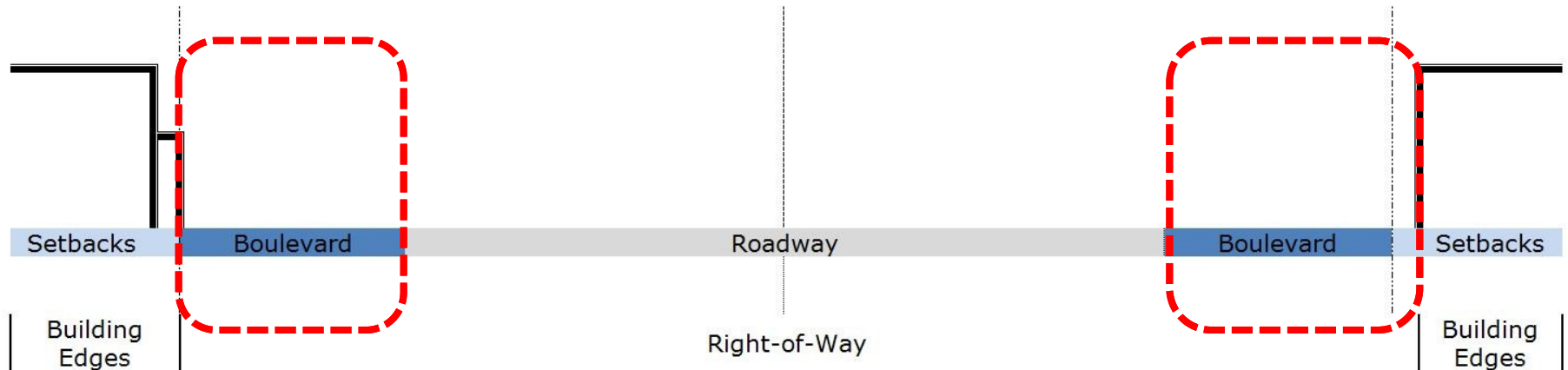
Where the guidelines apply



Street Anatomy



Guidelines apply: from curb to building face





Marketing Zone

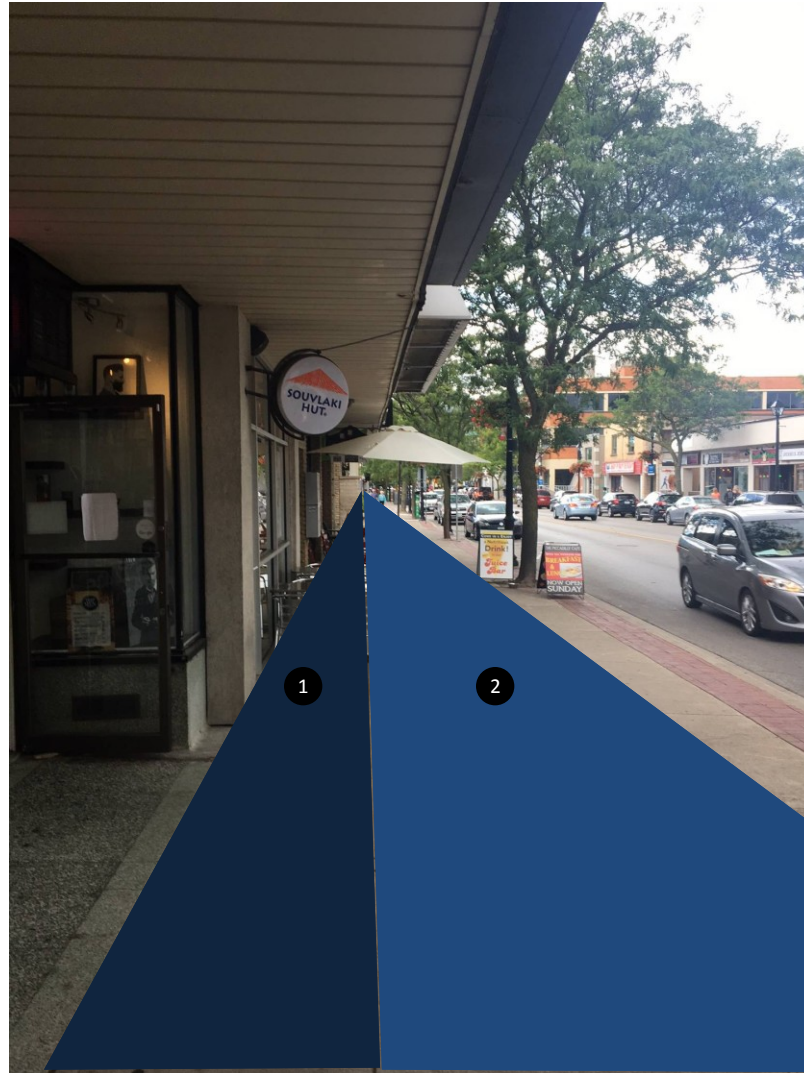
Clear Path Zone

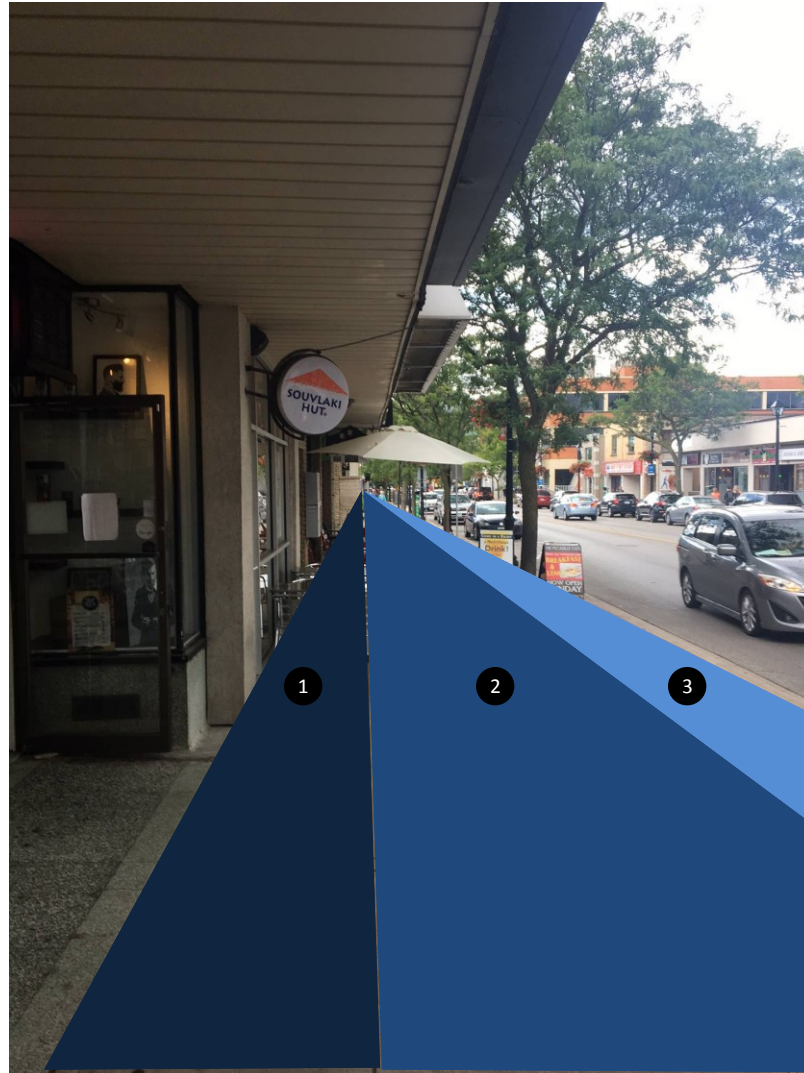
Furnishing Zone

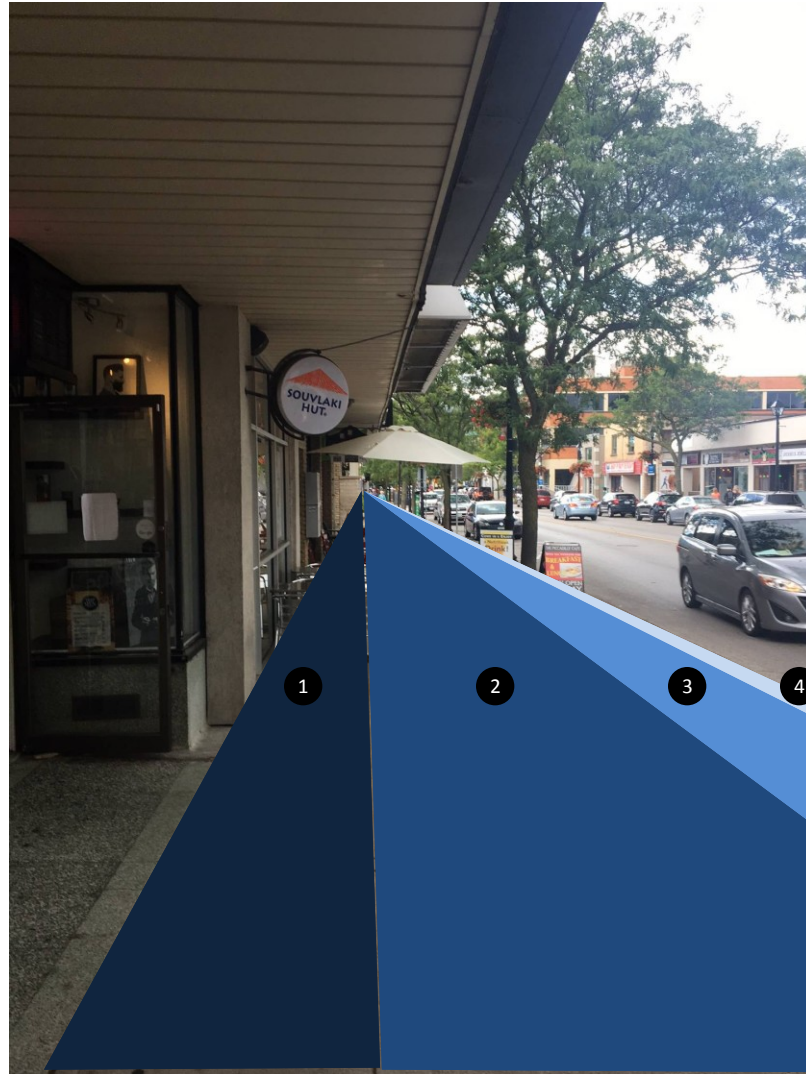
Edge Zone











The guidelines make recommendations for:

- Street Furniture
- Sidewalk / Boulevard Materials
- Street Trees
- Other components such as stormwater management

1. Lakeshore Road



© 2014 City of Burlington. All rights reserved. This map is for informational purposes only. It is not intended to be used for legal or other purposes. The City of Burlington is not responsible for any errors or omissions in this map.

BENCH

BOLLARD

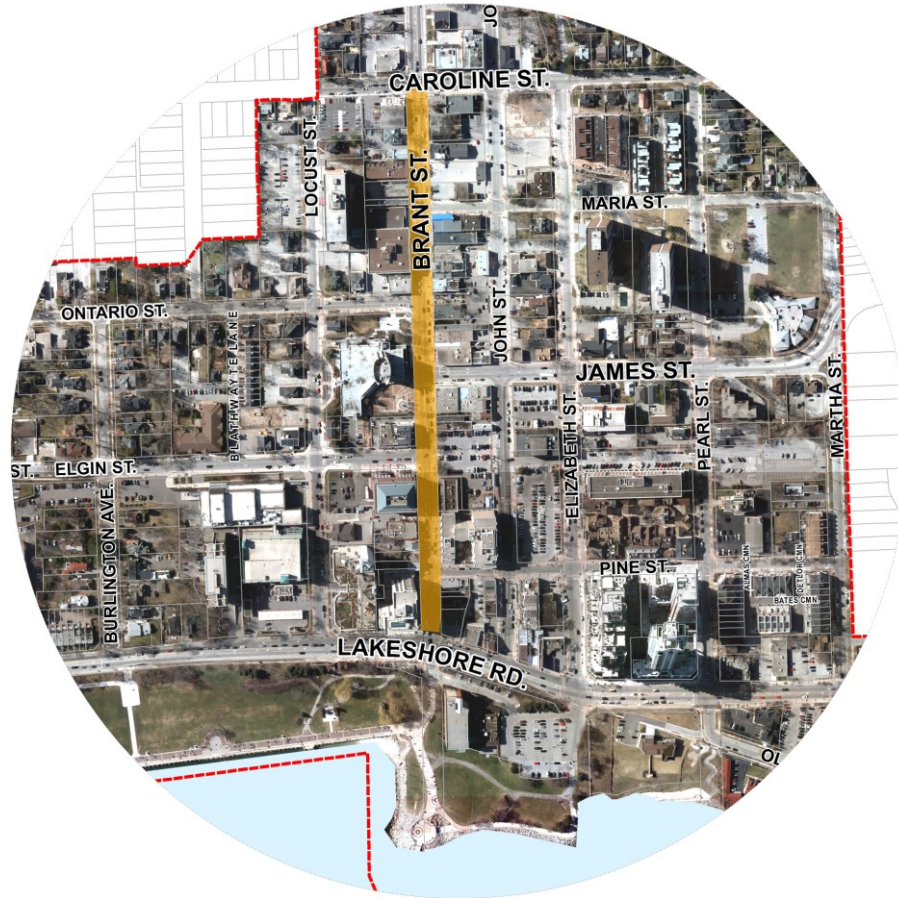
BIKE RACK

LIGHTING

LITTER



2. Lower Brant Street



BENCH



BOLLARD



BIKE RACK



LIGHTING



LITTER



3. Downtown Core District & Upper Brant Street

Downtown Core District



Upper Brant Street



BENCH



BOLLARD



BIKE RACK



LIGHTING



LITTER



4. Residential District



BENCH



LIGHTING



Next Steps

- **Open Houses - Share your feedback**

Thursday, May 17, 2018

1 - 3 p.m. OR 6:30 - 8:30 p.m.

Art Gallery of Burlington (Shoreline Room), 1333 Lakeshore Rd.

- Finalize Guidelines
- Report to Council

Thank you

Did we get it right?
Questions?