

Committee of the Whole, April 3 2018 - PB-30-18
File no.505-03/17,520-10/17,510-02/17

OFFICIAL PLAN AMENDMENT, ZONING BY-LAW AMENDMENT & DRAFT PLAN OF SUBDIVISION

2100 BRANT STREET

PUBLIC MEETING

NATIONAL HOMES (BRANT) INC.

CITY OF BURLINGTON, REGIONAL MUNICIPALITY OF HALTON

April 3, 2018



GLEN SCHNARR & ASSOCIATES INC.
URBAN & REGIONAL PLANNERS, LAND DEVELOPMENT CONSULTANTS

Public Consultation

- March 1/17 - A pre-consultation meeting was held with City and external agency staff to present/discuss the development proposal and confirm the application submission requirements.
- May 10/17 – National Homes held a Community Meeting at the Brant Hills Community Centre.
- July 14/17 - The Official Plan amendment, Zoning By-law amendment and Draft Plan of Subdivision applications were submitted to the City.
- September 15/17 - The application was circulated to City departments and external agencies to get detailed comments on the proposal.
- September 20/17 - A further meeting with the Resident's Group was initiated by the City to discuss the application submission and receive further feedback.
- October 12/17 - A City initiated Neighbourhood Meeting was held to allow residents to comment on the application submission.
- April 3/18 - The purpose of tonight's meeting is to seek formal input from the residents so that their comments can be considered along with the department and agency comments.



LANDS USE

- APARTMENTS
- TOWNHOUSES
- SHOPPING
- PARKS AND NATURAL AREAS
- SCHOOLS

AERIAL

2100 BRANT STREET, BURLINGTON, ON

SUBJECT LANDS

500m RADIUS



- EXISTING TREES TO BE PRESERVED
- PROPOSED DECIDUOUS TREE
- PROPOSED CONIFEROS TRFF
- PROPOSED LARGE SHRUBS
- SODDING
- DECORATIVE UNIT
- PATIO SLAB AND WOOD
- PRIVACY SCREEN

STRYBOS BARRON KING
LANDSCAPE ARCHITECTURE

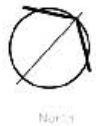
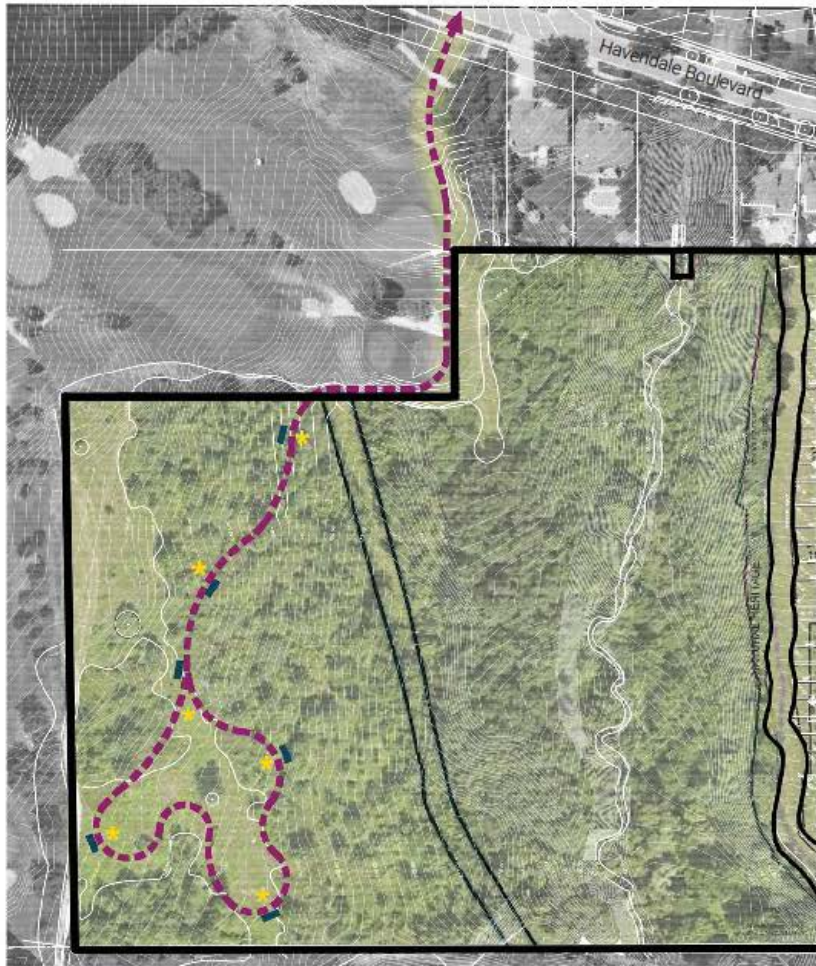
PROJECT:
PROPOSED RESIDENTIAL DEVELOPMENT
BRANT STREET, BURLINGTON
NATIONAL HOMES

DRAWING TITLE:
PRELIMINARY LANDSCAPE PLAN

SCALE: 1:400	PROJECT NO: 16-5010
DATE: APRIL 2017	
DRAWN BY: SM	DESIGNED BY: L100
CHECKED BY: SB	

PRELIMINARY LANDSCAPE PLAN

2100 BRANT STREET, BURLINGTON, ON



PROJECT: 16-5010
 ADDRESS: BRANT STREET, BURLINGTON
 TITLE: PARK TRAIL CONCEPT
 SCALE: NTS
 DATE: DECEMBER 18TH, 2017

- LEGEND**
-  NATURE TRAIL
 -  INTERPRETIVE SIGNAGE
 -  BENCH

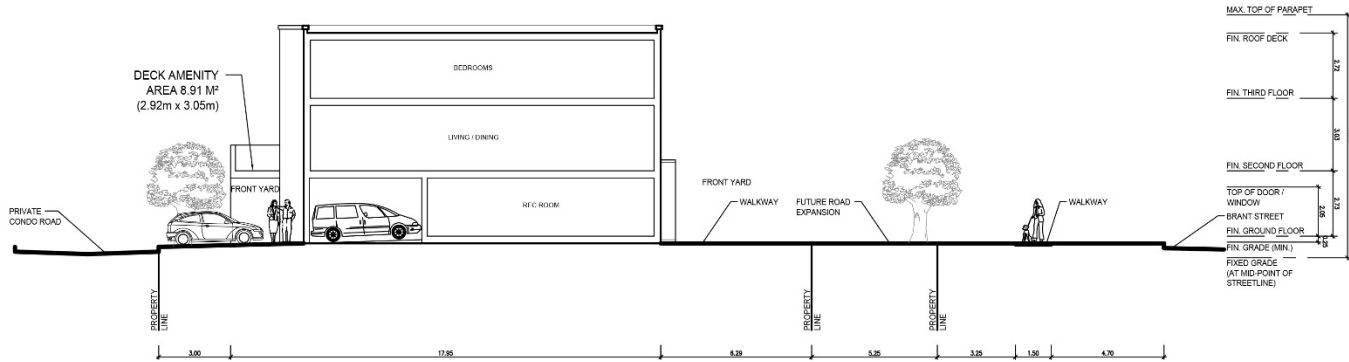
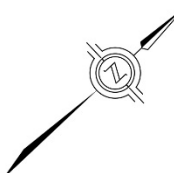
SBK
 5170 HURONTARIO STREET, SUITE 220
 MISSISSAUGA, ONTARIO, L4R 3G5
 T 416 955-6549 F 416 712-3131
 WWW.STRYBOSBK.COM

STRYBOS BARRON KING
 LANDSCAPE ARCHITECTURE

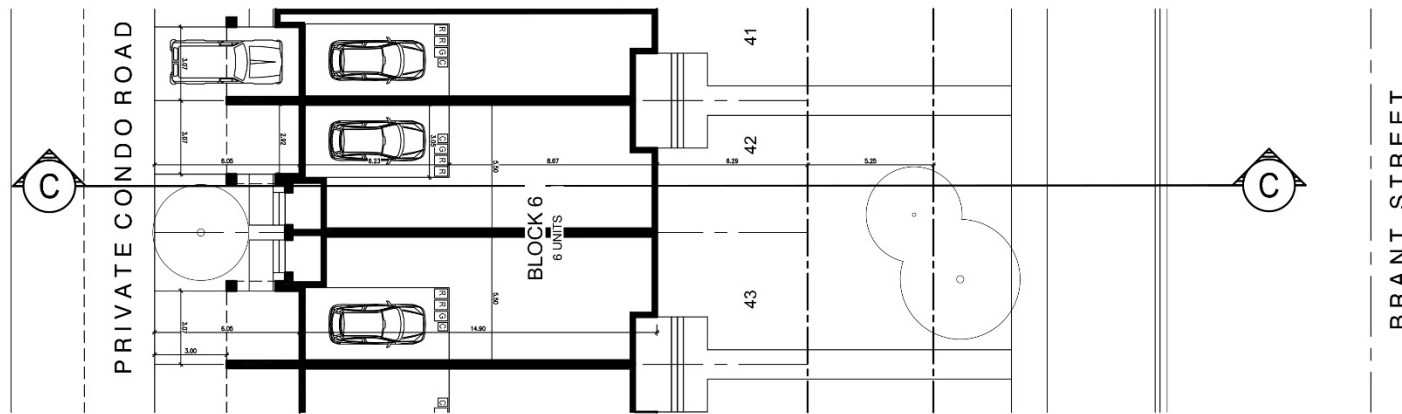
POTENTIAL TRAIL PLAN

2100 BRANT STREET, BURLINGTON, ON





TYPICAL CROSS SECTION



PARTIAL SITE PLAN

3 STOREY DUAL FRONTAGE TOWNHOUSE TYPICAL CROSS SECTION BLOCKS #5-9

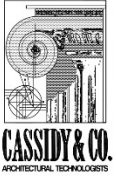
LEGEND

CGR WASTE, RECYCLING & COMPOST BINS

TREE



NATIONAL HOMES
2100 BRANT STREET
CITY OF BURLINGTON

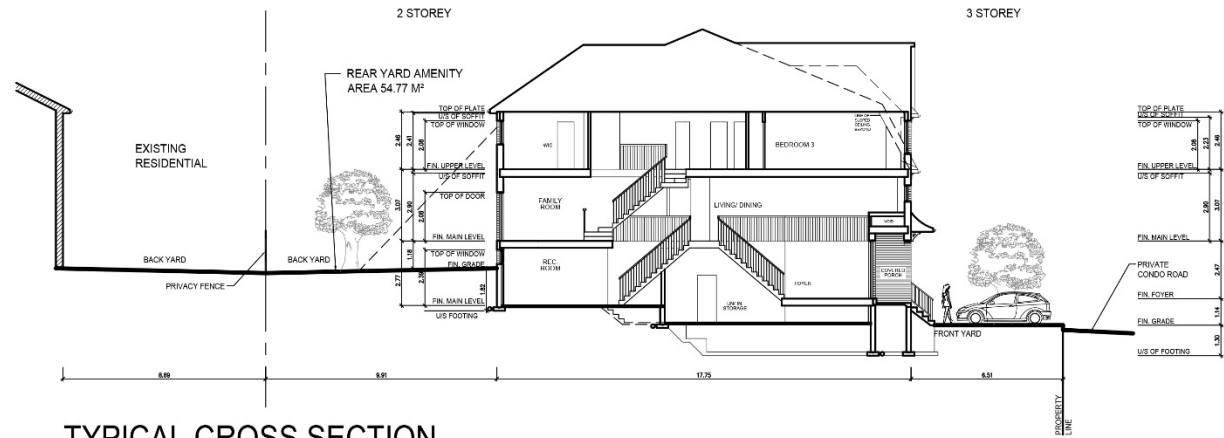
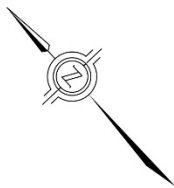


PROJECT 2016-62 SCALE 1 : 200 MAR. 28, 2018

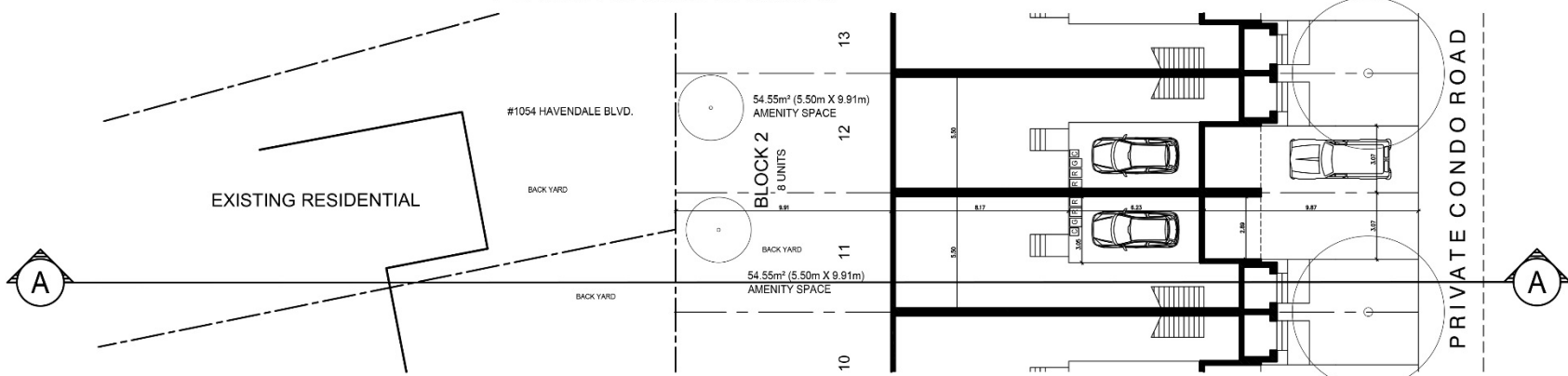
3 STOREY DUAL FRONTAGE TOWNHOUSES

2100 BRANT STREET, BURLINGTON ON





TYPICAL CROSS SECTION



PARTIAL SITE PLAN

LEGEND

- CGRR WASTE, RECYCLING & COMPOST BINS
- TREE

2 1/2 STOREY TOWNHOUSE
TYPICAL CROSS SECTION
BLOCKS #1-4



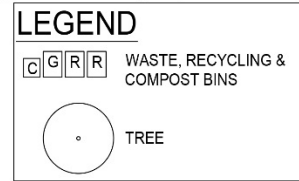
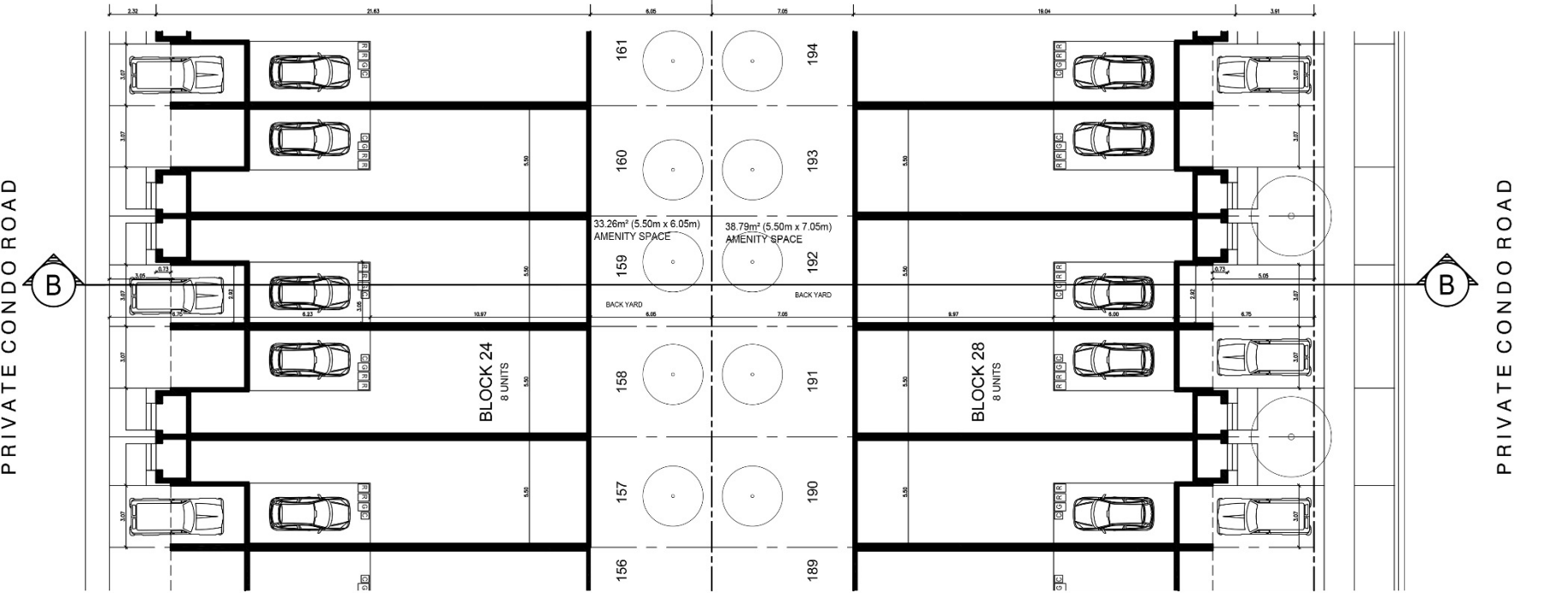
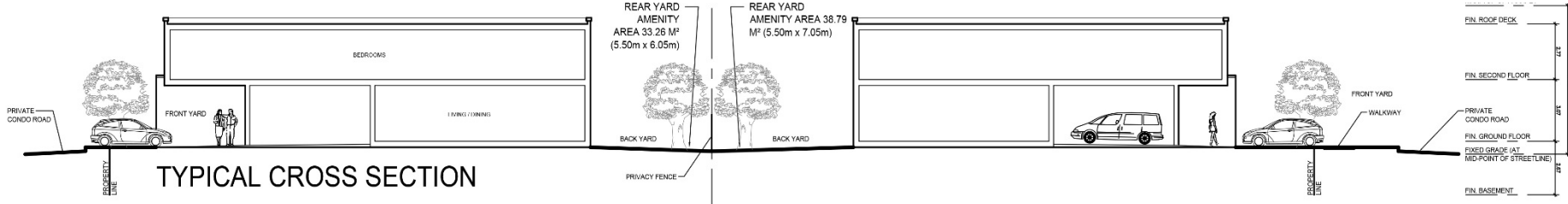
NATIONAL HOMES
2100 BRANT STREET
CITY OF BURLINGTON



PROJECT 2016-62 SCALE 1 : 200 MAR. 28, 2018

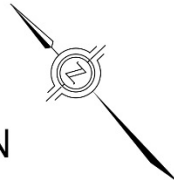
2 1/2 STOREY TOWNHOUSES
2100 BRANT STREET, BURLINGTON, ON



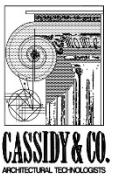


NATIONAL
H · O · M · E · S
You are the blueprint™

2 STOREY TOWNHOUSE
TYPICAL CROSS SECTION
BLOCKS #22-29



NATIONAL HOMES
2100 BRANT STREET
CITY OF BURLINGTON



PROJECT 2016-62 SCALE 1 : 200 MAR. 28, 2018

2 STOREY TOWNHOUSES
2100 BRANT STREET, BURLINGTON, ON



THANK YOU