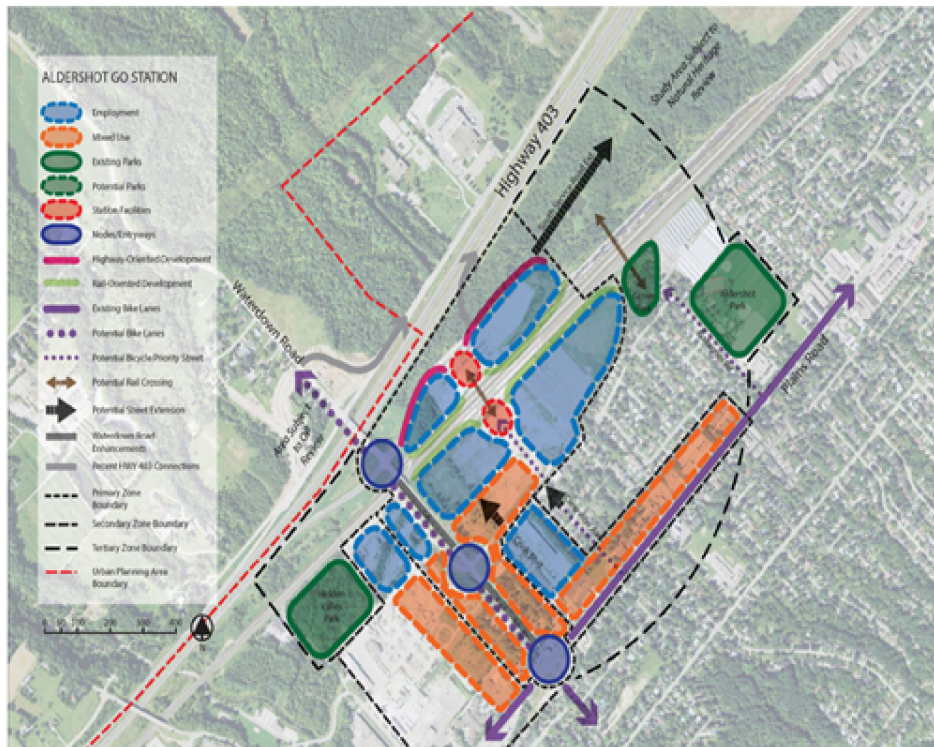
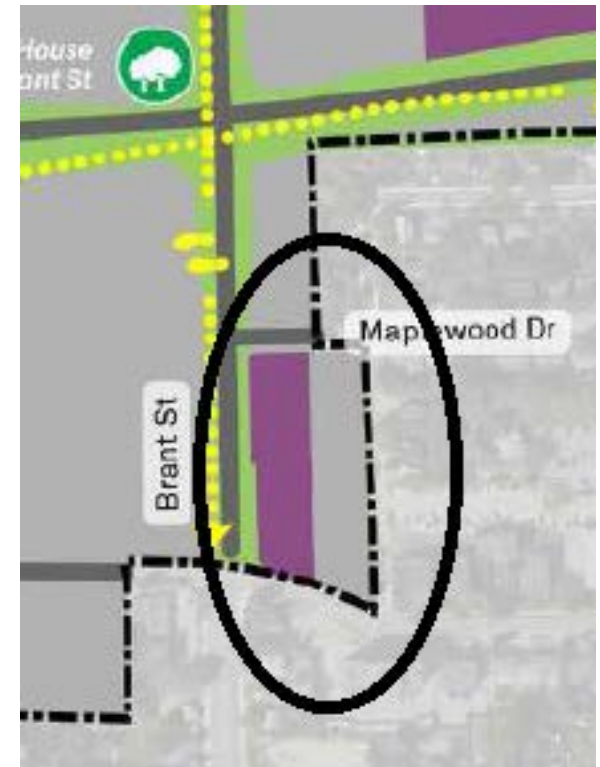




Aldershot Mobility Hub



- Is the western gateway into the City of Burlington
- Will become a significant mixed-use and employment destination within the City.
- New employment uses on both sides of the rail corridor will be of the highest quality. Accessory retail uses will create amenities for employees and local residents.
- A range of mid to tall mixed-use buildings on or adjacent to Waterdown Road will provide additional density to support a vibrant, safe and active area.



Link to video regarding traffic at Clearview and Plains Road West:

<https://photos.google.com/share/AF1QipMq-S0aQEdY7uKA65HvOs0WkJjDIIt6f036YkQDaI5hbIz80fQvsyknB0oP69uYswQ?key=am5PVWI3cjNXYWpTejRmTy1OdWlTMlpodlM1VmdR>