

## What We Are Trying To Protect



*The Trumpeter Swan Coalition*



*Lasalle Park Habitat, Family Day 2018*



*A place where people can enjoy nature up close*



*A place of incredible beauty where nature thrives  
even with the bay's industrial heritage*



*A place that draws thousands of photographers*

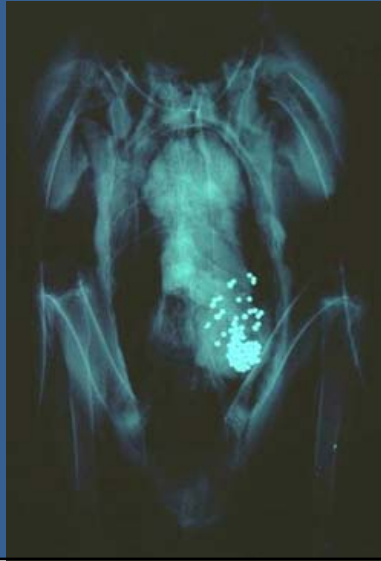


*And thousands of tourists to see the Trumpeter Swans*



## Causes of Death

Lead poisoning from ingestion of lead shot and fishing sinkers.



## Entanglement with fishing hooks and Lines

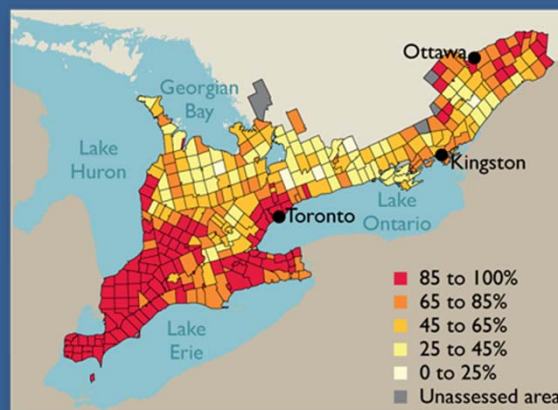


## Causes of Death

Collisions with unmarked power lines.  
Humans — hunting, harassment, dogs, personal watercraft.  
Disease and natural predation.



## Greatest Threat: Habitat Loss



*An average of 3.5km<sup>2</sup> of southern Ontario wetlands continue to be lost each year (1982 to 2002). These estimates are conservative since Great Lakes Coastal wetlands and wetlands smaller than 10 ha were not included in the analyses.*

*From Biodiversity Canada  
<http://www.biodivcanada.ca/default.asp?lang=En&n=F07D520A-1&offset=1&toc=show>*

## U.S. Habitat Loss



*"The new report, shows a loss of 59,000 acres each year in the coastal watersheds of the Great Lakes, Atlantic Ocean and Gulf of Mexico from 1998 to 2004."*

From the Status and Trends of Wetlands in the Coastal Watersheds of the Eastern United States, by the National Oceanic and Atmospheric Administration February 17, 2009

## Winter Habitat is Critical



From the Species Assessment For The Trumpeter Swans In Wyoming:

*"Loss and degradation of winter habitat is likely the main threat to trumpeter swans across their range due to expanding human populations. The long-term viability of all three populations likely depends primarily on enhancement of existing, restoration of former, and creation of new wintering grounds."*

<http://srd.alberta.ca/FishWildlife/WildlifeLandUseGuidelines/documents/RecommendedLandUseGuidelines-TrumpeterSwanHabitat-Sep27-2012.pdf>

## Aeration

*Aerators are expensive, problem prone and have maintenance issues but Bubble Tubing could be a viable option for the nearshore area if properly researched and funded.*

## Other Solutions

*Authorizing and supporting a winter feeding program when necessary*

*Or*

*Moving the floating Break Wall in winter*



## History of Trumpeters At LaSalle





# Tourism & Trumpeters

Wild Swan Day, Ogden Utah



Monticello, Minnesota  
Chamber of Commerce promotes Trumpeter Swan viewing as a winter tourism attraction. The city has also set up "Swan cams" so people all around the world can view the swans.



Wild Wings Festival, Duncan, British Columbia  
A month-long festival of nature and arts featuring the Trumpeter Swan

A Celebration of Swans at "Swan Haven" in the Yukon is a three-day festival that 10% of the Yukon's entire population participates in.



Sandhill Wildlife Area, Wisconsin has a 14-mile long auto tour Trumpeter Trail.



Lasalle Park has become a teaching area where young biologists come to train, learning about swan behavior and how to band and tag from the citizen experts of the Trumpeter Swan Restoration Group who have been working with them for more than three decades.





*The interests of these citizens need to be protected, too.*

## Trumpeter Swan Behaviour



*The Trumpeter Swans have become an important part of the fabric of this community. Please make plans for their protection part of your plans for Lasalle Park.*

Thank you

