

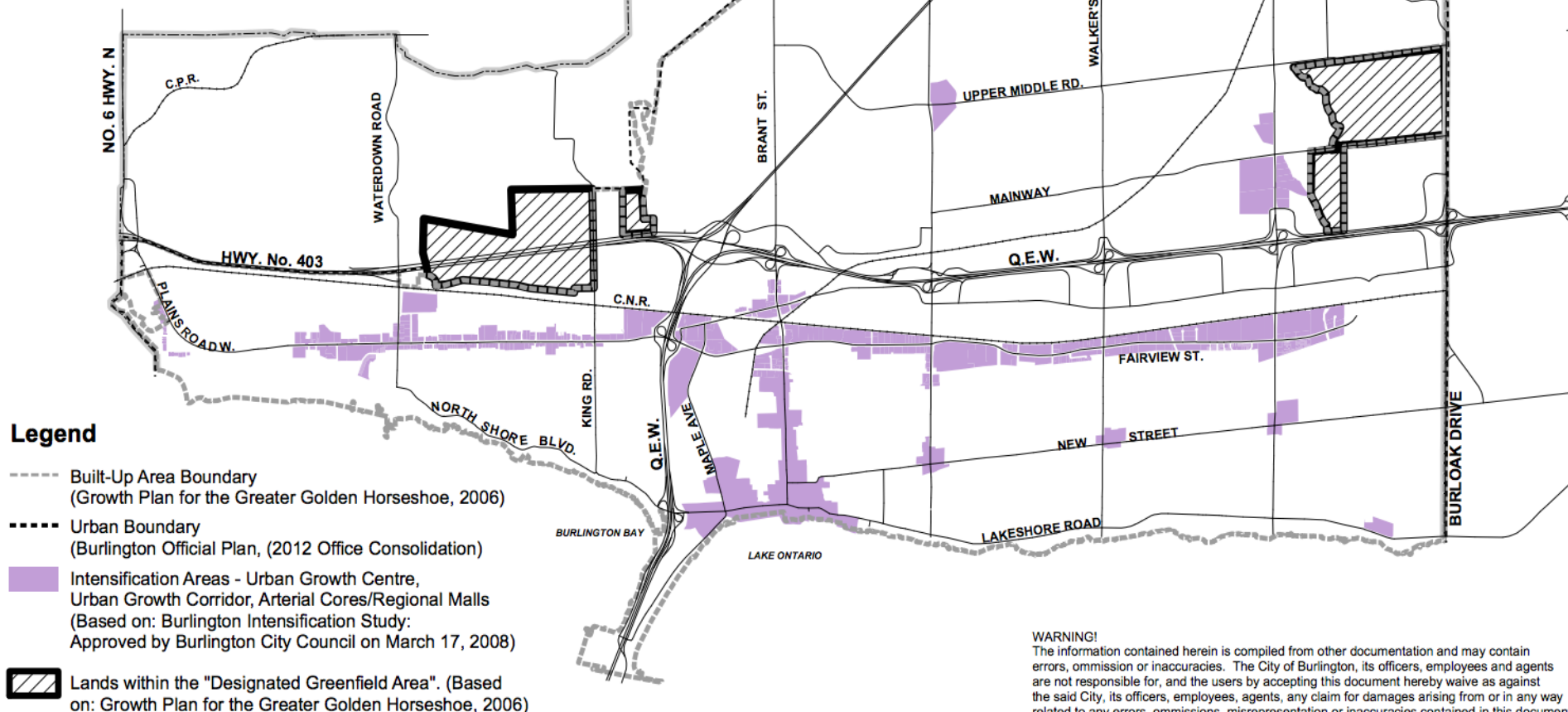
File: 505-08, PB-29-16,
Council July 18, 2016

Official Plan Review: Urban Structure and
Intensification Policy Directions Report

**MAP A-1:
Location of Growth Areas
(Intensification and Future Development Areas)
City of Burlington**

Date: November 14, 2013

Note: There are areas outside of the Urban Area with potential for new growth. Consideration should be given to areas identified as "Area Eligible for Urban Servicing", as shown on Map 1 - Region of Halton Official Plan, 2006)



Built Boundary for the Growth Plan for the Greater Golden Horseshoe, 2006
© Queen's Printer for Ontario, 2008, reproduced with permission of the Ministry of Public Infrastructure Renewal.



WARNING!
The information contained herein is compiled from other documentation and may contain errors, omission or inaccuracies. The City of Burlington, its officers, employees and agents are not responsible for, and the users by accepting this document hereby waive as against the said City, its officers, employees, agents, any claim for damages arising from or in any way related to any errors, omissions, misrepresentation or inaccuracies contained in this document whether due to negligence or otherwise. Any user is advised to verify all information and assume all risk in relying on the information contained herein.

Example Developments

	Frontage (m)	Depth (m)	Floors	Units	PPU
Village West	150	45	3	52	2.1
34 Plains	45	62	6	42	2
Jazz	77	95	4	79	2
Station West	150	220	3	160	3
Paradigm	120	150	24	525	1.2

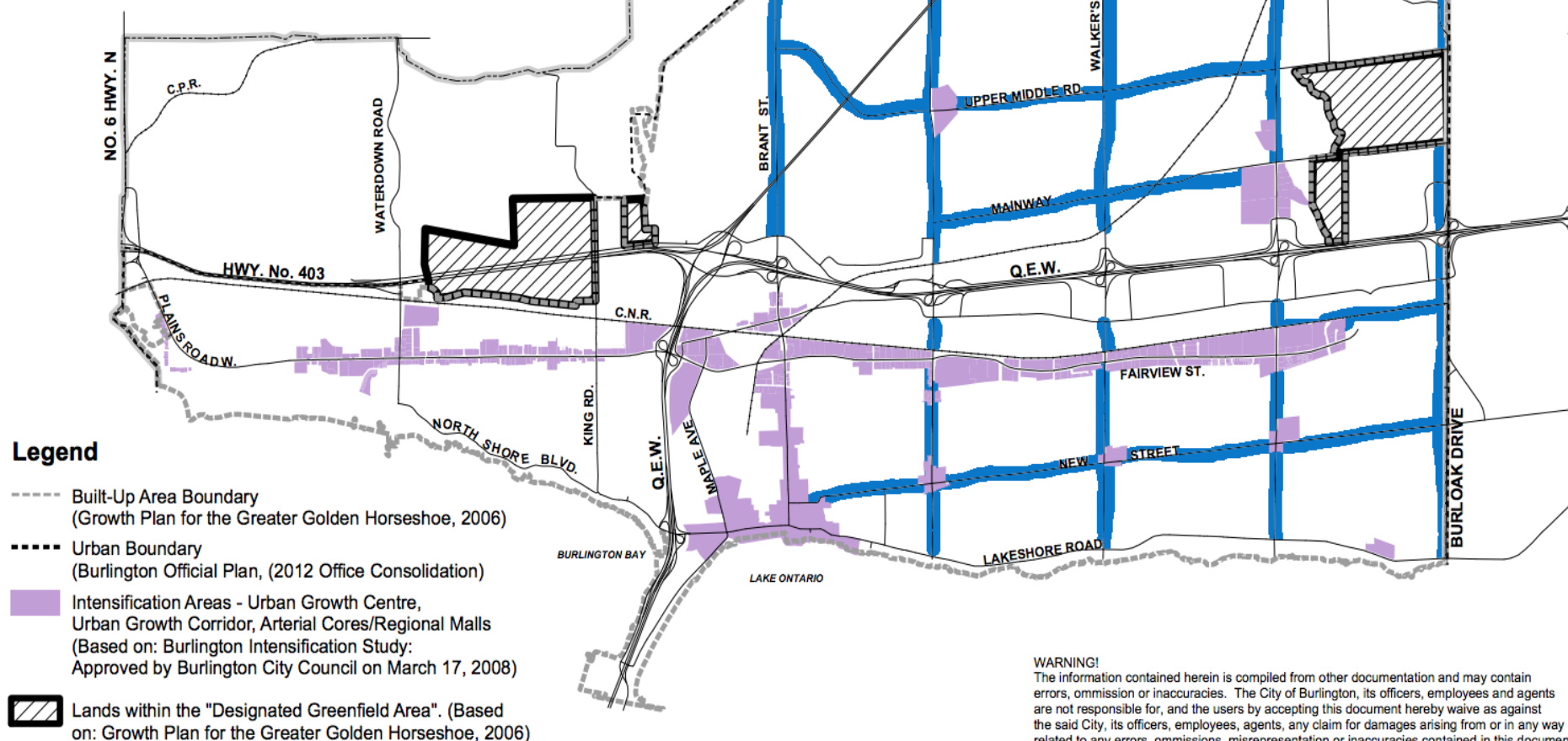
Pedestrian Range

	Frontage (m)	People	PPF	In 2.5k
Village West	150	109.2	0.73	3,640
34 Plains	45	84	1.87	9,333
Jazz	77	158	2.05	10,260
Station West	150	480	3.20	16,000
Paradigm	120	630	5.25	26,250

**MAP A-1:
Location of Growth Areas
(Intensification and Future Development Areas)
City of Burlington**

Date: November 14, 2013

Note: There are areas outside of the Urban Area with potential for new growth. Consideration should be given to areas identified as "Area Eligible for Urban Servicing", as shown on Map 1 - Region of Halton Official Plan, (2006)



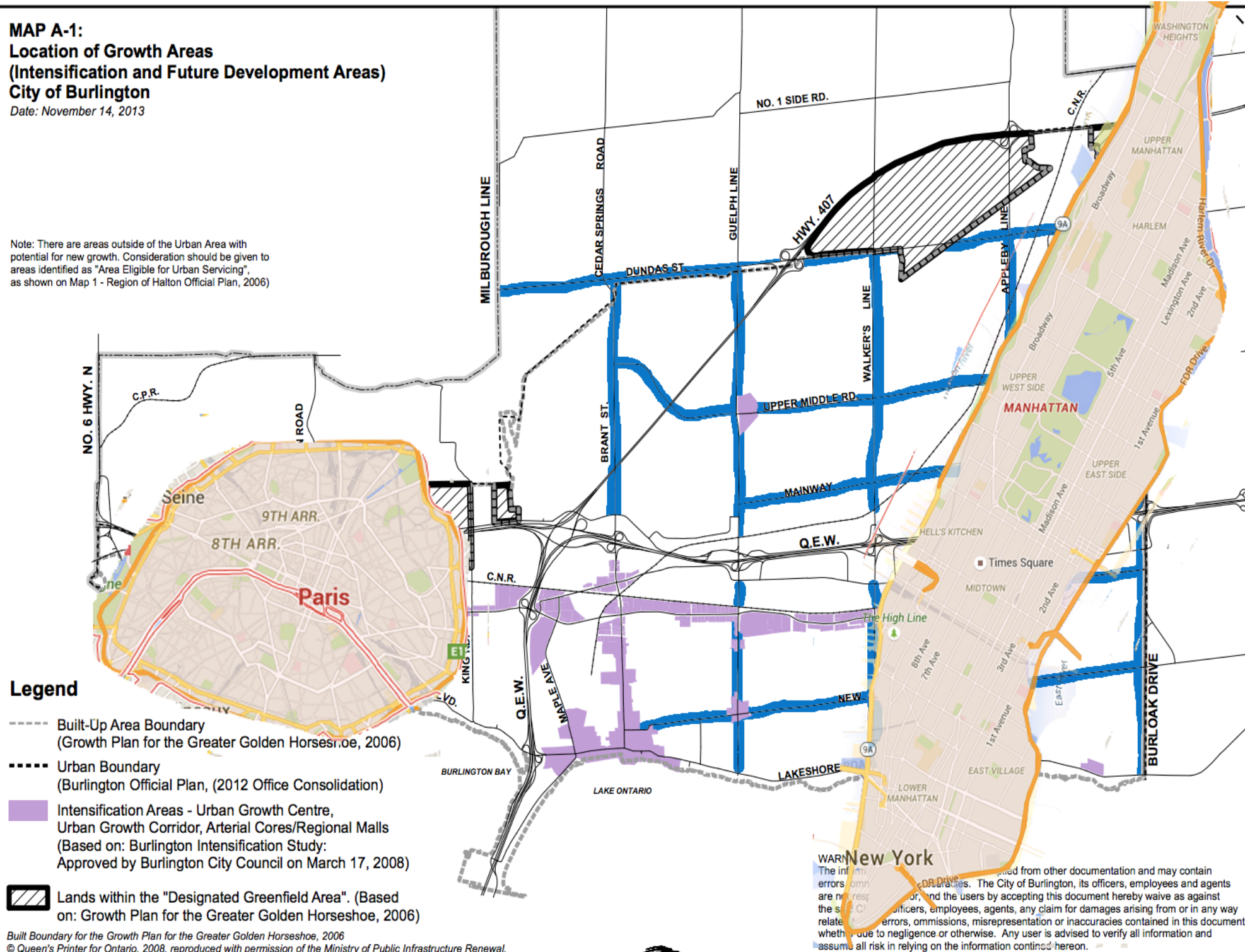
Built Boundary for the Growth Plan for the Greater Golden Horseshoe, 2006
© Queen's Printer for Ontario, 2008, reproduced with permission of the Ministry of Public Infrastructure Renewal.



WARNING!
The information contained herein is compiled from other documentation and may contain errors, omission or inaccuracies. The City of Burlington, its officers, employees and agents are not responsible for, and the users by accepting this document hereby waive as against the said City, its officers, employees, agents, any claim for damages arising from or in any way related to any errors, omissions, misrepresentation or inaccuracies contained in this document whether due to negligence or otherwise. Any user is advised to verify all information and assume all risk in relying on the information contained herein.

Date: November 14, 2013

Note: There are areas outside of the Urban Area with potential for new growth. Consideration should be given to areas identified as "Area Eligible for Urban Servicing", as shown on Map 1 - Region of Halton Official Plan, 2006)



WARN New York

The information provided from other documentation and may contain errors, omissions, misrepresentation or inaccuracies contained in this document are not responsible for, and the users by accepting this document hereby waive as against the City of Burlington, its officers, employees, agents, any claim for damages arising from or in any way related to the errors, omissions, misrepresentation or inaccuracies contained in this document whether due to negligence or otherwise. Any user is advised to verify all information and assume all risk in relying on the information contained herein.