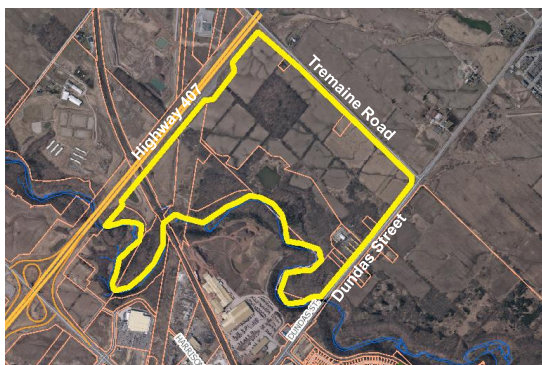


# Tremaine Dundas Secondary Plan Regional Modifications



## Secondary Plan Area

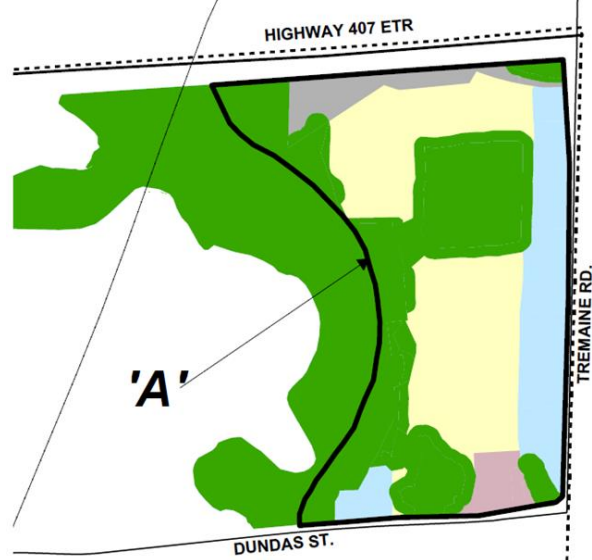


### Site and Surrounding Area:

- Lands are bound by Bronte Creek, Highway 407, Tremaine Road and Dundas Street
- Lands comprise 133 hectares with developable area being approximately 50 hectares



## Adopted OPA 107 – Land Uses



## Regional Modifications

- **Protected Corridor for 407 Transitway Study Area**
  - *Addition of policy and identified on schedule*
- **Phasing**
  - *Additional policy clarifying the Regional role in phasing implementation and Identified on schedule*
- **Natural Heritage System**
  - *Designation for Secondary Plan area*
- **Definitions**
  - *Modified definitions for Natural Heritage System, Natural Heritage Features, Development and Infrastructure that only apply to Secondary Plan area*
- **Clarification and readability**
  - *Tremaine Road Right of Way width*
  - *Consistent italicization, numbering corrections, clerical errors*

## OPA 107 Mapping Modification

