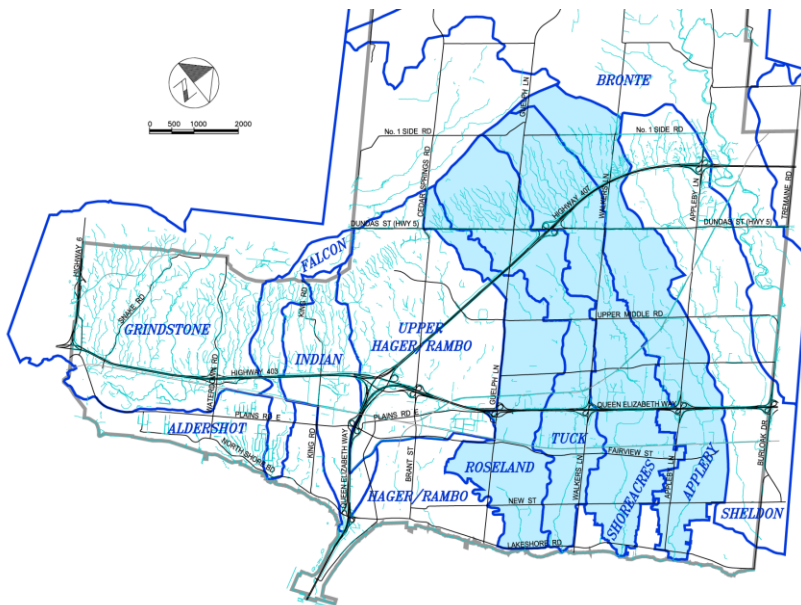




Creek Watersheds Map



Flood Mitigation Projects



Tuck Creek - Phase 1



- Tuck Creek Phase 2 (New St.) – 2019/20
- Roseland Creek – New St. to Lakeshore Rd – 2019/20
- SW Design Standards update - 2019
- Tuck Creek Phase 3 (Spruce Ave.) – 2021
- Tuck Creek – Rexway/Rockwood EA complete
- Appleby Creek EA – Fairview to Pinedale complete
- Roseland Creek SWM Facility – Leons & CH

Mechanisms of Home flooding

1. Riverine – creek overflows
2. Urban area flooding – low areas
3. Overland flow – lot grading
4. Sanitary or Storm Sewer backups

Minor Storm System – 5 year

- Storm sewers, manholes, catch basins, outlets

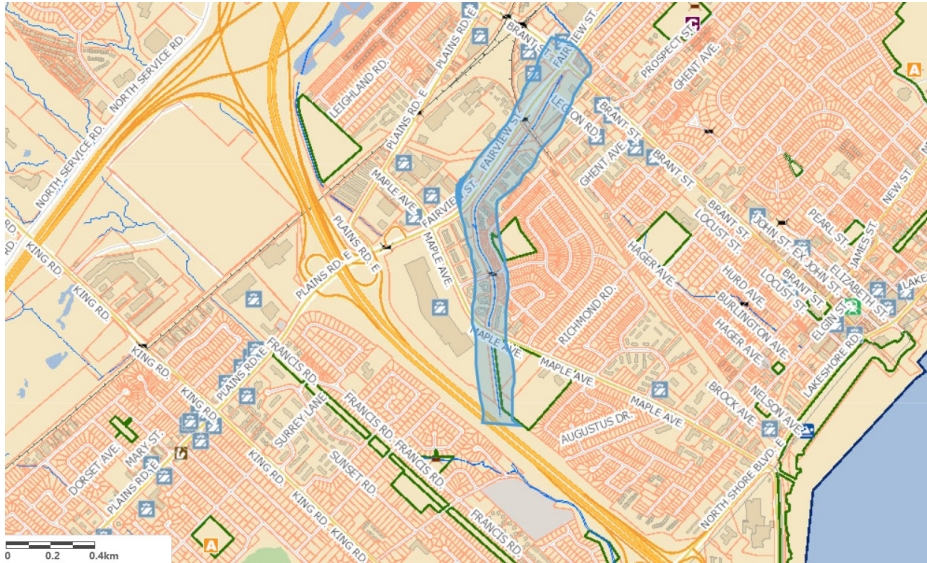


Major Storm System – 100 year

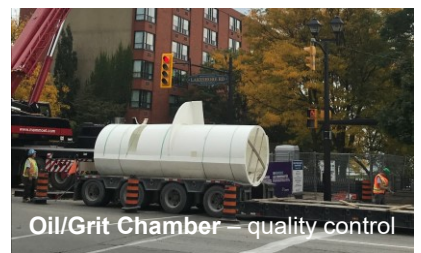
- Overland flow on roads, in ditches & creeks



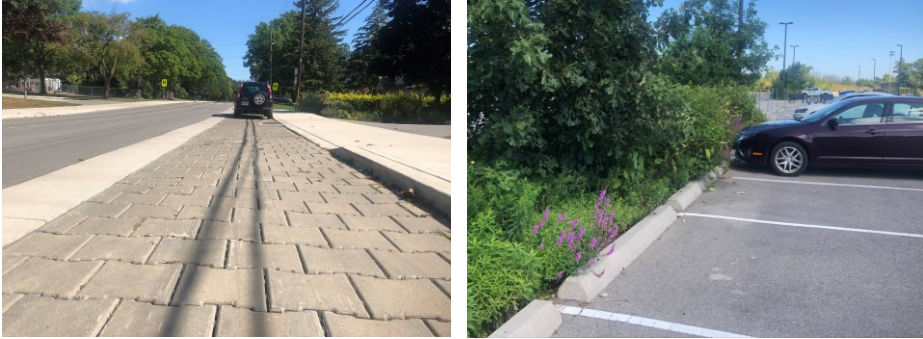
Hager–Rambo Diversion



Stormwater Management Facilities



The Roll of Low Impact Development (LID)



Burlington has been implementing LID's since the early 2000's, in developments and capital projects.

Maintenance is a key operational & financial consideration.

LID's in Development & Capital Projects

- Permeable pavement – 7 projects (Townsend Ave.)
- Bioswales – 9 projects (Sherwood Park)
- Parking lot infiltration – development and park redevelopment (City View Park)
- Infiltration pits – low res redevelopment since 2014
- Infiltration trenches & underground SWM – road reconstructions (Spring Gardens Rd.)
- Silva Cell tree planting – park redevelopments and road reconstructions (Elgin Promenade)
- Rain Garden – public school pilot project

Climate Change Adaptation

- Stormwater Design Stds. Update
- Creek Maintenance & Inspection
- Home Flood Protection Program
- Shoreline protection
- ICLEI Climate Change workshops & project
- International Urban Cooperation – Växjö, Sweden
- Municipal Natural Assets Initiative