

Taking a Closer Look at the Downtown



getinvolvedburlington.ca

Taking a Closer Look at the Downtown

Re-examination of the Downtown Policies in the
Adopted Official Plan

Presentation to:
Heritage Burlington citizen advisory committee

October 9, 2019



What is an Official Plan?

- Statutory document that describes the City's long-term land-use strategy.
- Prepared with input from the public and helps ensure future planning and development will meet the needs of the community
- City's authority to regulate land use through an Official Plan and Zoning By-law comes from the *Ontario Planning Act*
- City's Official Plan must conform to higher-level plans and policies:
 - Provincial Policy Statement
 - Provincial Plans (Growth Plan, Niagara Escarpment Plan, Greenbelt Plan, etc)
 - Halton Region Official Plan

How do Planning Act & Heritage Act support each other?

- *Heritage Act* gives tools to conserve heritage resources
 - Listing property on Municipal Register
 - Designating individual property
 - Designating Heritage District
- *Planning Act* gives tools to promote the use of *Heritage Act* tools, and to guide the integration of heritage resources in development plans:
 - Provincial Policy Statement
 - Provincial Plans
 - Halton Region Official Plan
 - City's Official Plan
- Other Acts (e.g.: tax incentives through *Municipal Act*)
- Different tools in City's toolkit; need to use the right tool for the job!

Background on the Adopted Official Plan (OP)

- April 2018: City adopted a new OP
 - Heritage Burlington provided input on heritage policies of this plan (Section 3.5 of the Adopted OP – starts on [page 3-22](#))
 - Policies for Downtown Mobility Hub were developed through an Area-Specific Planning study
- City submitted Adopted OP to Halton Region for review
- Dec. 2018: Region paused its review after identifying some conformity issues
- 2019: City staff working with Halton Region staff to make policy modifications that will resolve conformity issues
- **Adopted OP will not come into effect until Region approves it**

Background on the OP Re-examination

- Q1 2019:
 - City Council directed staff to re-examine the Adopted OP
 - Council confirmed scope of re-examination = downtown policies
- Q2 2019:
 - Council approved work plan
 - City hired SGL Planning consultants to work with City Planning staff
- Q3 2019:
 - Project team pre-engaged with key stakeholders and citizen committees
 - Project team developed [Engagement Plan](#)
 - SGL prepared [Background Report](#)
 - First phase of public engagement in August

OP Re-examination Process to date

- Summer 2019
 - Engagement → Themes (see [Feedback Report](#) pg 14)
 - Principles
 - Vision
 - 2 Concepts for future
- Fall 2019
 - Engage on 2 concepts
 - Move towards a recommended concept
- Winter 2019-20
 - Council to approve a concept
 - Detailed policy development

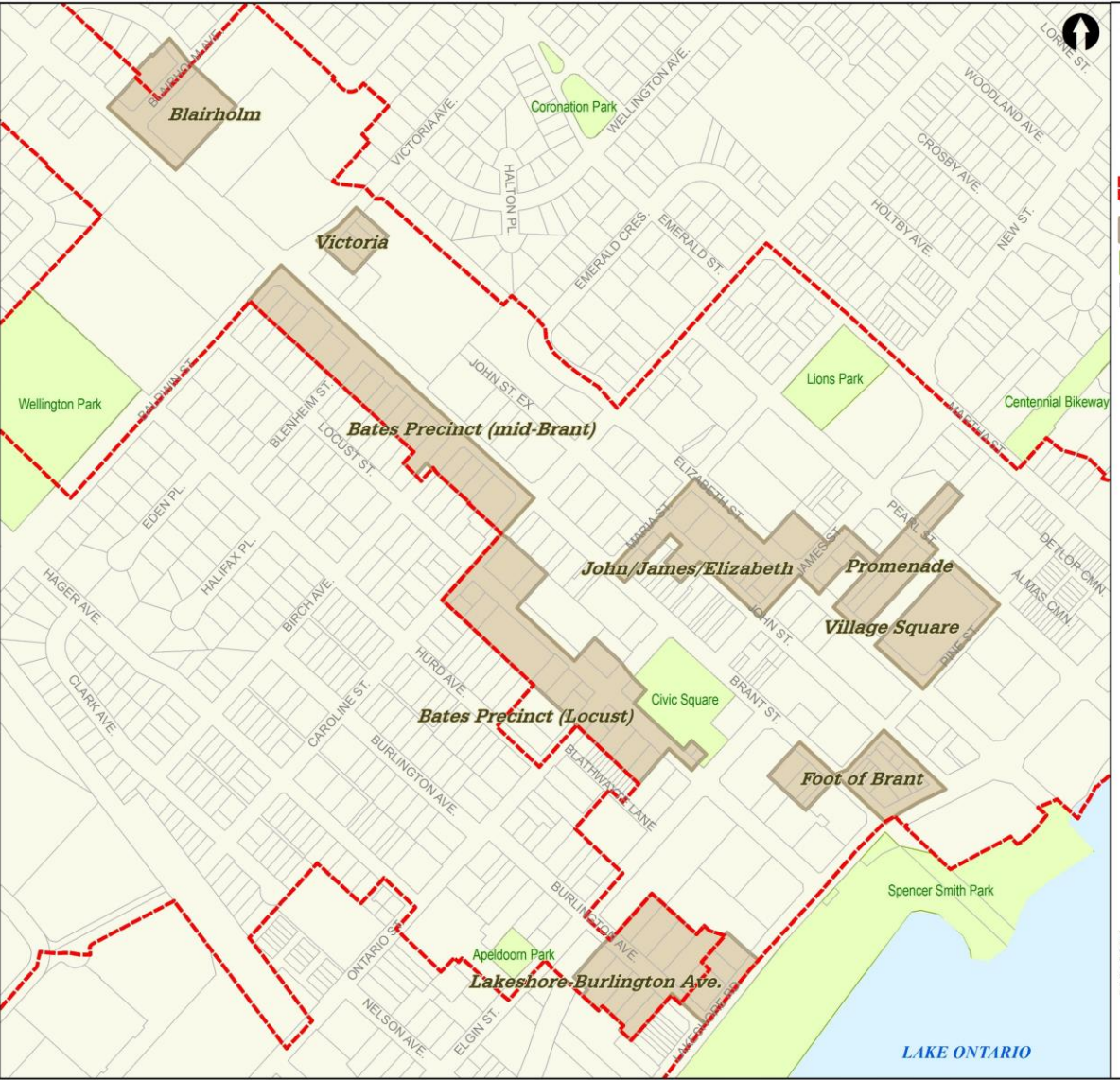


Technical Studies for Heritage

- ASI has completed Archaeological Study and Cultural Heritage Resource Assessment for Mobility Hubs/OP Re-examination
- Heritage Burlington provided input in 2018 to refine the CHRA study area
- Cultural Heritage Resource Assessment
 - Identifies known and potential heritage resources in study area
 - 8 new potential built heritage resources
 - 5 new potential cultural heritage landscapes
 - Intended to inform development of *Planning Act* policies
 - Not intended to inform *Heritage Act* decisions (designation, etc.)
 - May guide discussion for future *Heritage Act* considerations

“Focus Clusters” for Heritage study

(developed with Heritage Burlington, 2018)



ASI's study findings

Cultural Heritage Resource Assessment, 2019

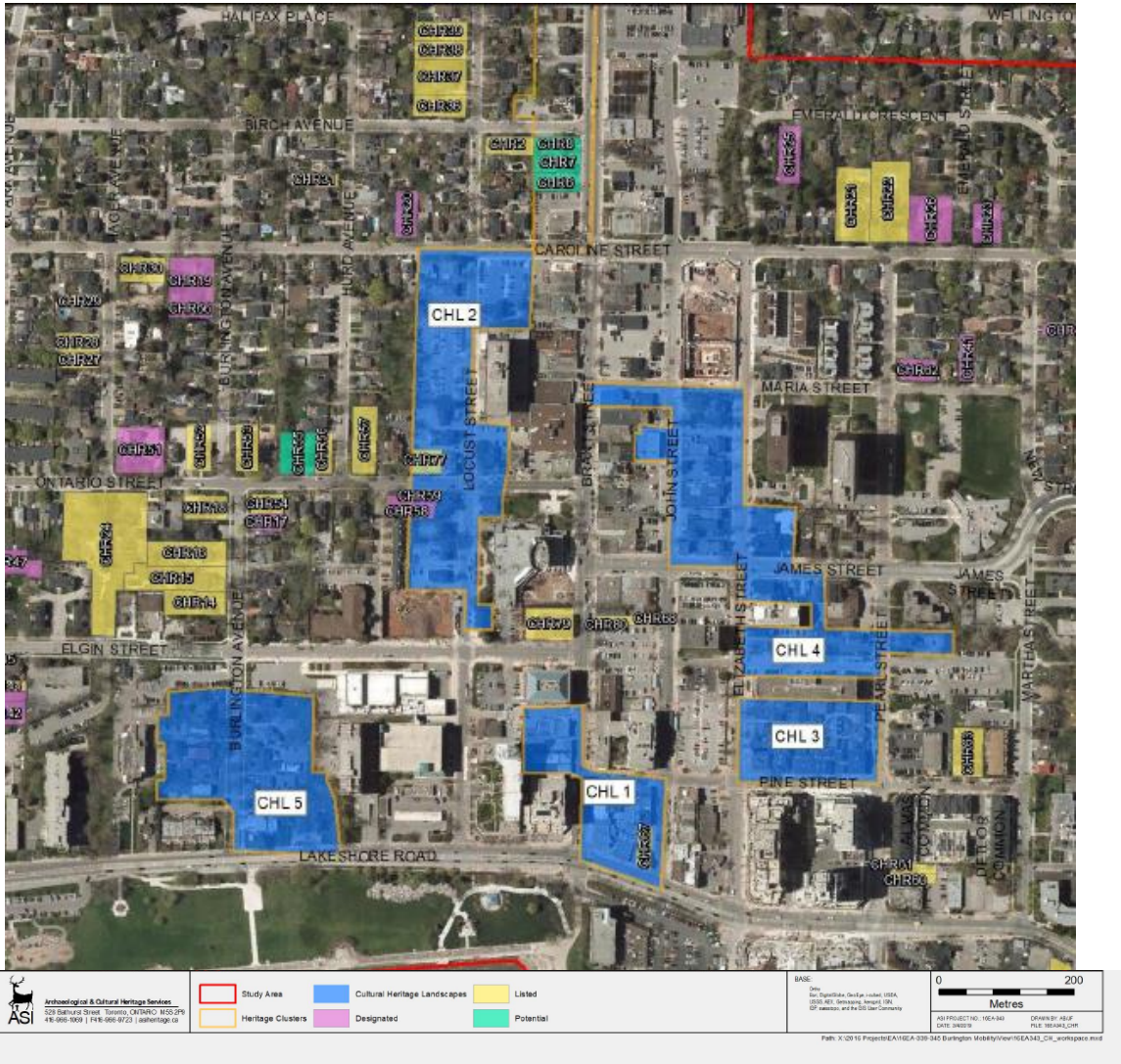


Figure 11: Location of Cultural Heritage Resources within and/or adjacent to the study area
should be noted that as ASI's field review was limited to the areas within the limits of the nine focus clusters, the exact boundaries of the potential cultural heritage landscapes are currently unknown. further work is necessary, including field review outside of the limits of the focus clusters, in order to establish the boundaries of the potential cultural heritage landscapes.

Next Steps for Project Team

- Public Engagement Round 2
 - Mid-October to early November 2019
 - Discussion around 2 possible concepts for the future of downtown
 - 3-D models
- Winter 2019-20:
 - Develop a recommended Land Use concept and present to Council
 - Develop detailed policies based on Council-approved Land Use concept
- Working towards:
 - Council decides what policy modifications to endorse
 - Halton Region makes final decision on City's Official Plan

Call to Action for Committees

- Learn more about the project at www.getinvolvedburlington.ca
- Participate as an individual
 - Online survey
 - Action Labs
 - Stay informed
- Participate as a committee:
 - Advise Project Team and Council on Land Use Plan and policies
 - **Provide written comments to staff by mid-November 2019**
 - How should the findings of the heritage study inform the development of Official Plan policies?
 - What heritage objectives must the Official Plan's downtown policies achieve?

Questions? & Links to More Info

For more information:

- Project website: www.getinvolvedburlington.ca
- “[What You Need to Know](#)” background report
- Project [Engagement Plan](#)
- [Feedback report](#) on results of August engagement
- Contact the project team: thomas.douglas@burlington.ca