



SUBJECT: Public Tree Removal – 310 Appleby Line

TO: Environment, Infrastructure & Community Services Cttee.

FROM: Roads, Parks and Forestry Department

Report Number: RPF-01-20

Wards Affected: 4

File Numbers: 820-02

Date to Committee: January 13, 2020

Date to Council: January 27, 2020

Recommendation:

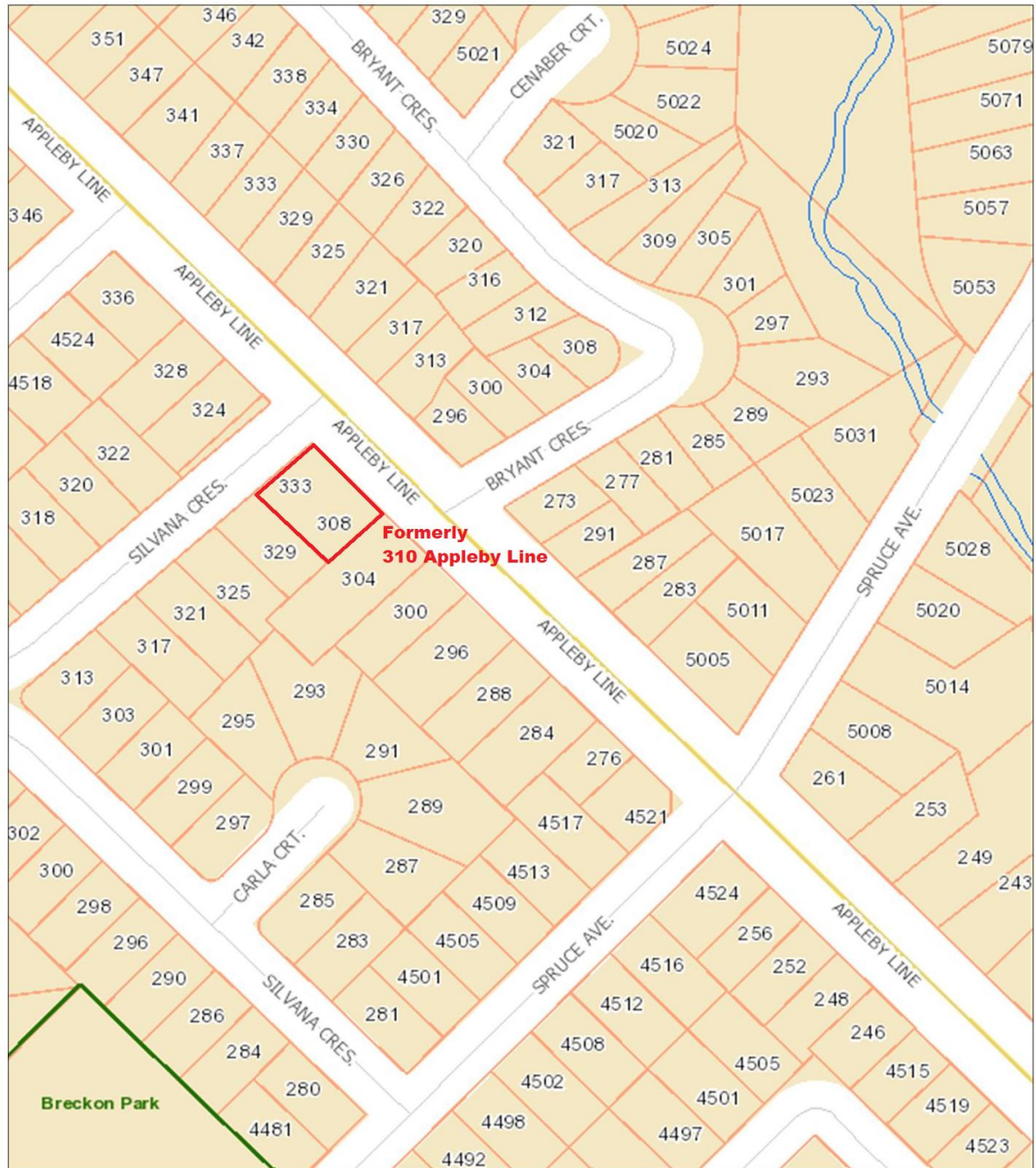
Approve the request by Coral Gable Custom Homes to remove one City-owned tree (8 cm Honey Locust) from the City's road allowance at 310 Appleby Line to allow driveway access as part of a development application; and

Instruct Coral Gable Custom Homes to provide compensation for the tree removal by providing cash in lieu of replacement totaling \$800. The approved appraisal method is aggregate caliper; and

Direct that all associated costs with respect to the removal of the tree will be the responsibility of Coral Gable Custom Homes, and the contractor hired to remove the tree will be approved by the Manager of Urban Forestry or designate.

Background and Discussion:

The subject property is located at the south-westerly corner of the intersection of Silvana Crescent and Appleby Line (See Fig. 1). The property has been severed; one home will exit onto Appleby Line and the other onto Silvana Crescent.



1 : 2,000.00 101.6 50.80 Meters

Date Thursday, December 19, 2019
Department Department Text
Comments Division Text

The information contained herein is compiled from other documentation and may contain errors, omission or inaccuracies. The City of Burlington, its officers, employees and agents are not responsible for, and the users by accepting this document hereby waive as against the said City, its officers, employees, agents, any claim for damages arising from or in any way related to any errors, omissions, misrepresentation or inaccuracies contained in this document whether due to negligence or otherwise. Any user is advised to verify all information and assume all risk in relying on the information contained hereon.



Fig. 1

On September 17th, 2018 (application received July 12, 2018) the Committee of Adjustment approved a variance to facilitate the creation of a new residential lot (COA A-101/18).

The applicant contacted the Roads, Parks & Forestry department on October 30, 2019 to request the removal of a small tree located in the city road allowance. A proposed site plan was provided which indicates the location of the new driveway on Silvana Crescent.

Discussion:

Pursuant to Tree By-law 68-2013, Council approval is required to remove trees located on public property immediately abutting private property for which a development application has been submitted. Based on the proposed site plan, one City tree will require removal in order to construct a driveway fronting Silvana Crescent. (Please refer to attached site plan)

The tree to be removed is a honey locust (*Gleditsia triacanthos*), measuring 8 cm Diameter at Breast Height (DBH). The tree is in good health, with good structural condition.

Monetary compensation in the amount of \$800.00 will be provided for the removal of the tree in accordance with the Public Tree By-law 68-2013 (Sections 1.18 & 1.19) which will contribute toward street tree planting efforts.

Strategy/process

Through coordination with both Capital Works and Transportation staff it was determined that the preferred location for a driveway would be on Silvana Crescent because there is a lower volume of traffic. There are two public trees adjacent to this property on Silvana, both of similar size and condition. There is not a suitable driveway location that would result in both trees being preserved.

Financial Matters:

A total of \$800 will be required from Coral Gable Custom Homes to compensate for the removal of the tree. Costs of tree and stump removal will be borne entirely by the applicant.

Total Financial Impact

None to City of Burlington

Source of Funding

Not applicable

Other Resource Impacts

Not applicable

Conclusion:

The City's Forestry section have reviewed the proposed tree removal and support the tree removal as per the recommendations listed above.

Respectfully submitted,

Brianna Thornborrow

Supervisor of Forest Health and Planning

(905) 333-6166 ext. 6145

Appendices:

A. Photos

B. Proposed Site Plan

Notifications:

Albert Faccenda, Coral Gable Homes

afaccenda1@cogeco.ca

Report Approval:

All reports are reviewed and/or approved by Department Director, the Chief Financial Officer and the Executive Director of Legal Services & Corporation Council. Final approval is by the City Manager.