

# MAP 1 EXISTING NETWORK

## BURLINGTON CYCLING MASTER PLAN

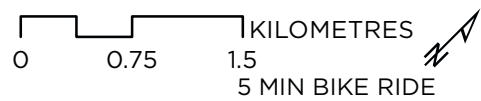
### EXISTING FACILITIES

- Multi-Use Trail
- Multi-Use Path
- Painted Bike Lane
- Painted Bike Lane / Shared
- Signed Route
- Paved Shoulder

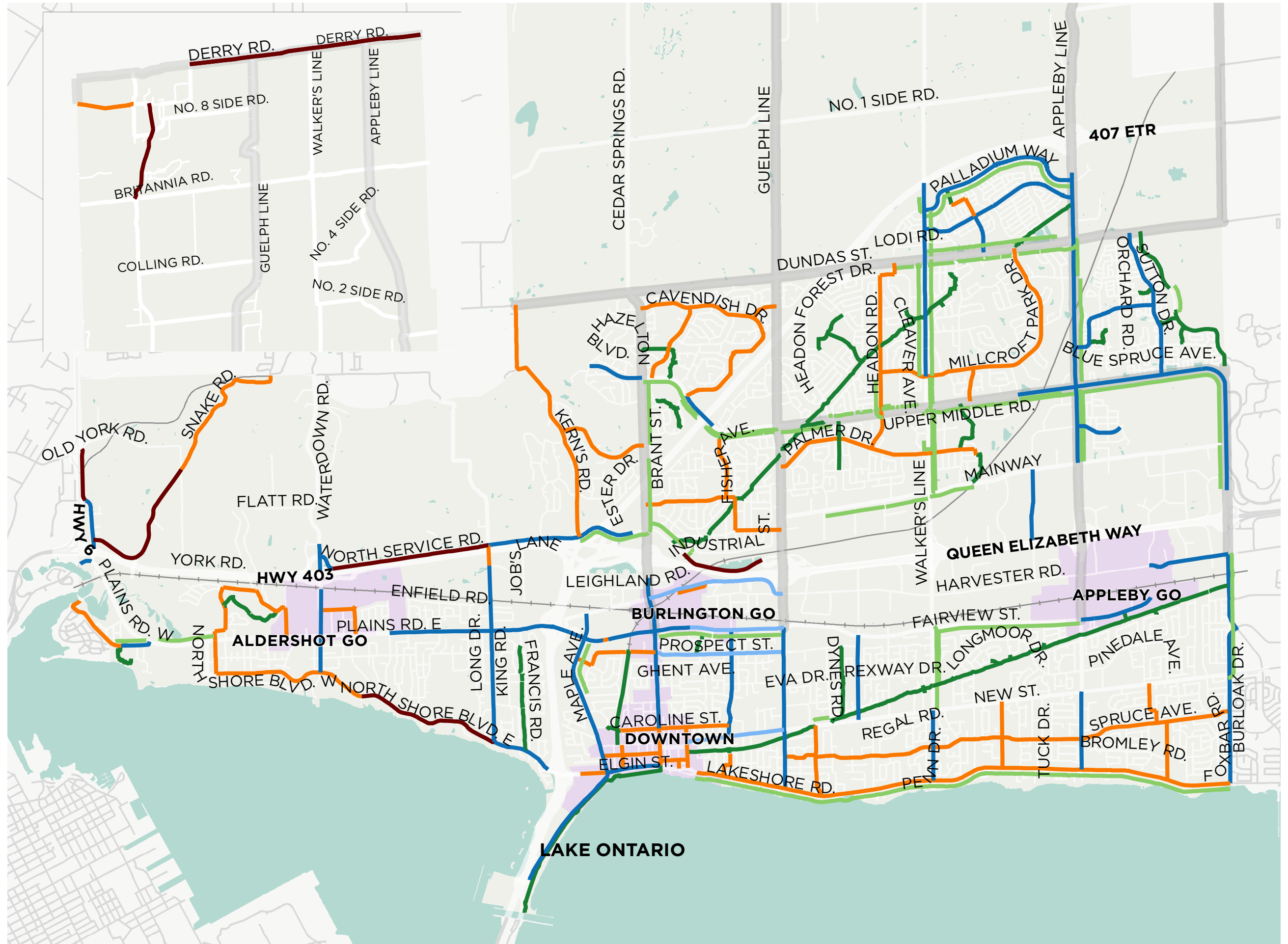
### FEATURES AND BOUNDARIES

- Regional Road
- + Railway
- Mobility Hub
- Waterbody
- Burlington

Note: existing network conditions are shown as of 2018



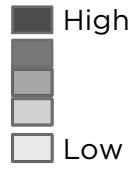
Data provided by the City of Burlington, Region of Halton, and Statistics Canada. Map produced January 2020.



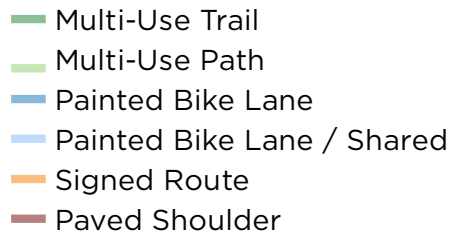
# MAP 2 DEMAND ANALYSIS

## BURLINGTON CYCLING MASTER PLAN

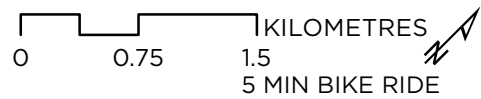
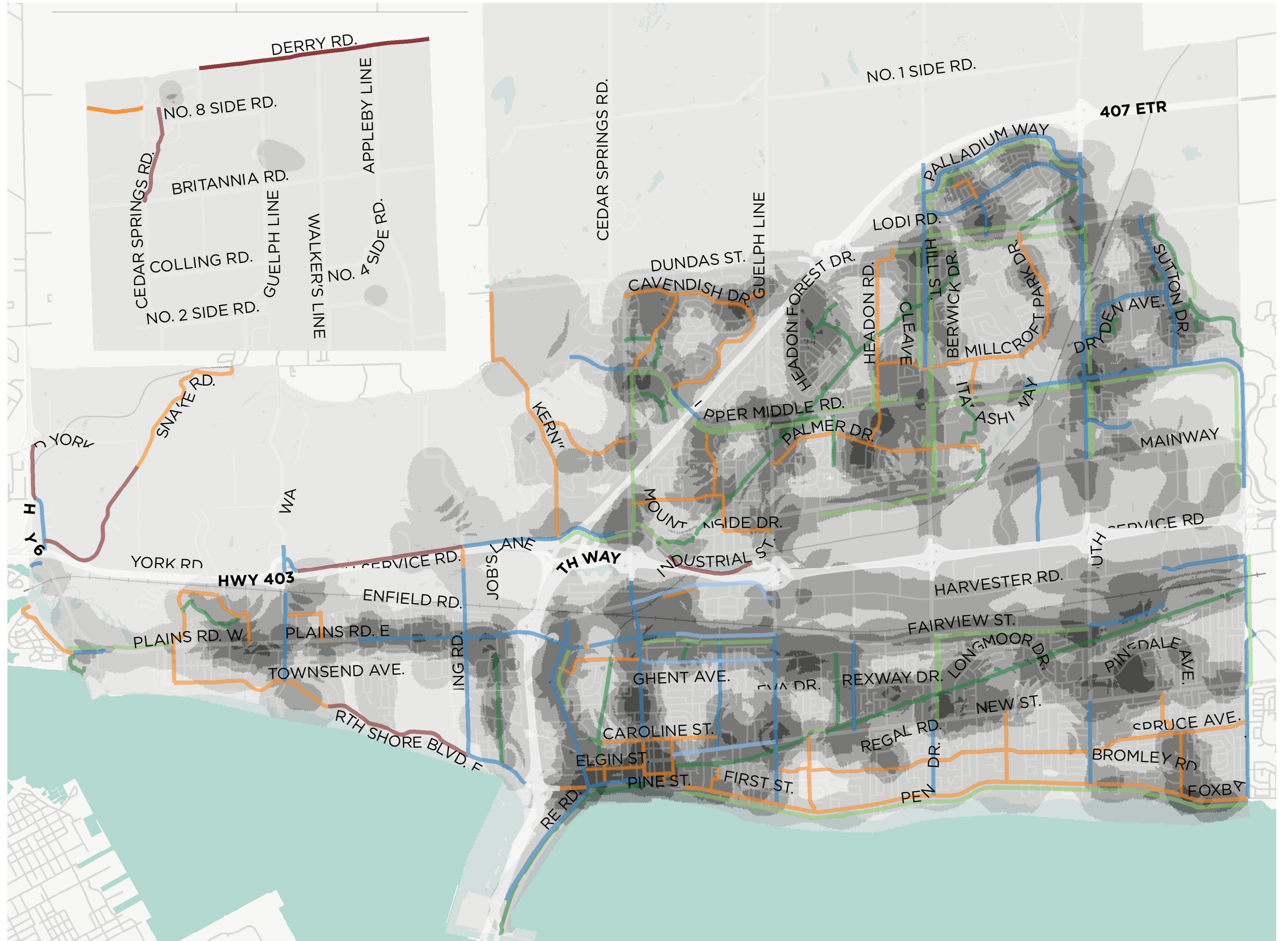
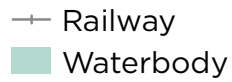
### LIVE, WORK, PLAY DEMAND



### EXISTING FACILITIES



### FEATURES AND BOUNDARIES



Data provided by the City of Burlington, Region of Halton, and Statistics Canada.  
Map produced January 2020.

# MAP 3 LEVEL OF TRAFFIC STRESS ANALYSIS

## BURLINGTON CYCLING MASTER PLAN

### LEVEL OF TRAFFIC STRESS SCORE

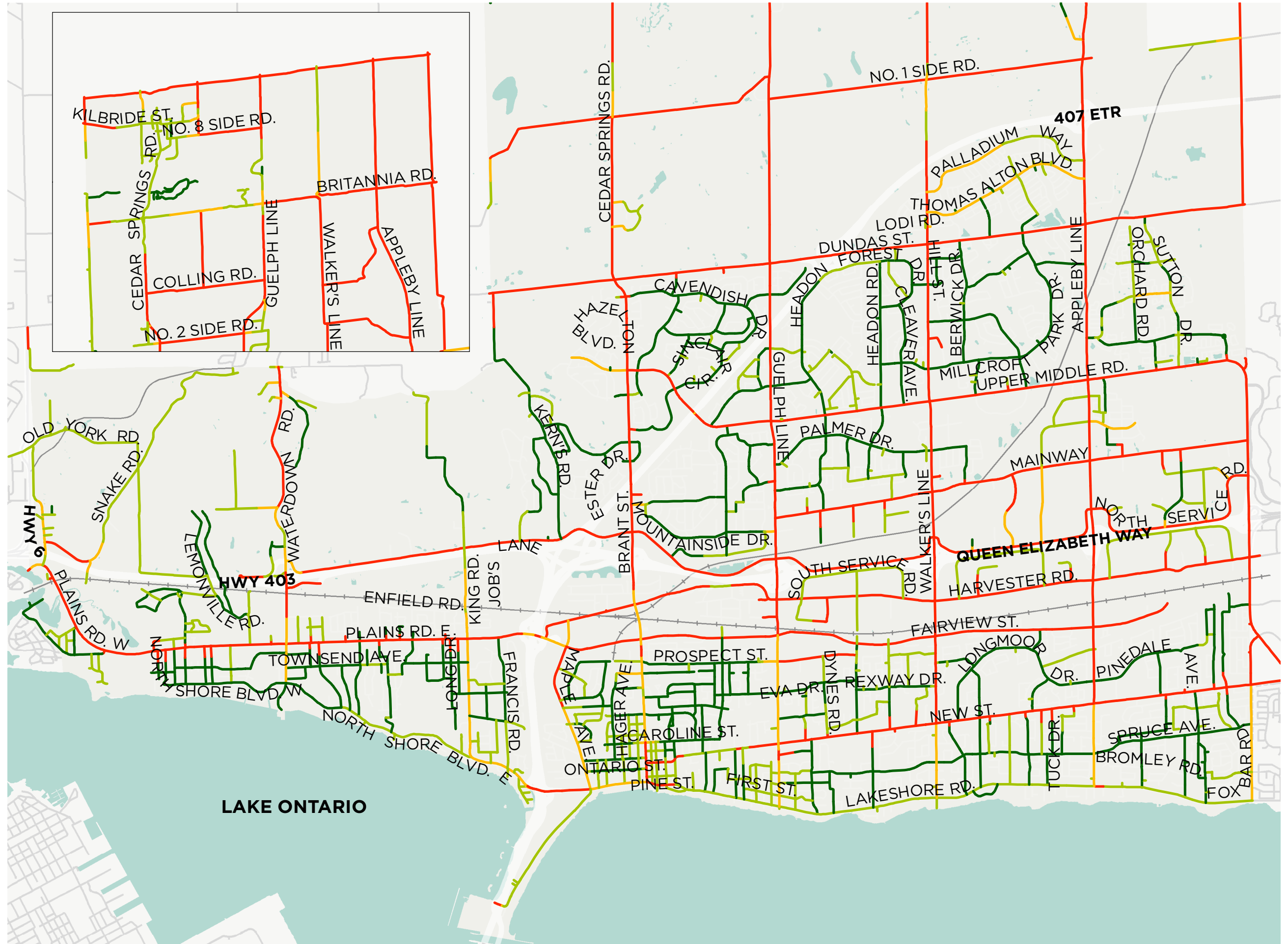
- 1 - All ages and abilities
- 2 - Interested but concerned
- 3 - Enthused and confident
- 4 - Strong and fearless

### FEATURES AND BOUNDARIES

- Railway
- Waterbody
- Burlington

Level of traffic stress (LTS) analysis evaluates roadways based on their characteristics to identify how stressful roadways are to cycle on. Characteristics include the posted speed limit, number of lanes, intersection crossings and bike facilities. The higher the LTS score, the more stressful the roadway is.

Cul de sacs have been removed as they do not provide network connectivity.



Data provided by the City of Burlington, Region of Halton, and Statistics Canada. Map produced June 2019.

# MAP 4 LEVEL OF TRAFFIC STRESS OF EXISTING FACILITIES

BURLINGTON CYCLING MASTER PLAN

LEVEL OF TRAFFIC STRESS SCORE

- 1 - All ages and abilities
- 2 - Interested but concerned
- 3 - Enthused and confident
- 4 - Strong and fearless

LIVE, WORK, PLAY DEMAND HEAT MAP

HIGHEST  
LOWEST

FEATURES AND BOUNDARIES

Railway  
Waterbody  
Burlington

Level of traffic stress (LTS) analysis evaluates roadways based on their characteristics to identify how stressful roadways are to cycle on. Characteristics include the posted speed limit, number of lanes, intersection crossings and bike facilities. The higher the LTS score, the more stressful the roadway is.



Data provided by the City of Burlington, Region of Halton, and Statistics Canada. Map produced June 2019.



Recently constructed facilities during the planning process may not have been included in the analysis

# MAP 5 PROPOSED NETWORK

## BURLINGTON CYCLING MASTER PLAN

### SPINE NETWORK

- Multi-use Trail
- Multi-use Path
- Protected Bikeway
- Local Street Bikeway
- Painted Bike Lane
- Grade Separated Connector
- Highway Interchange Crossing

### CONNECTOR ROUTES

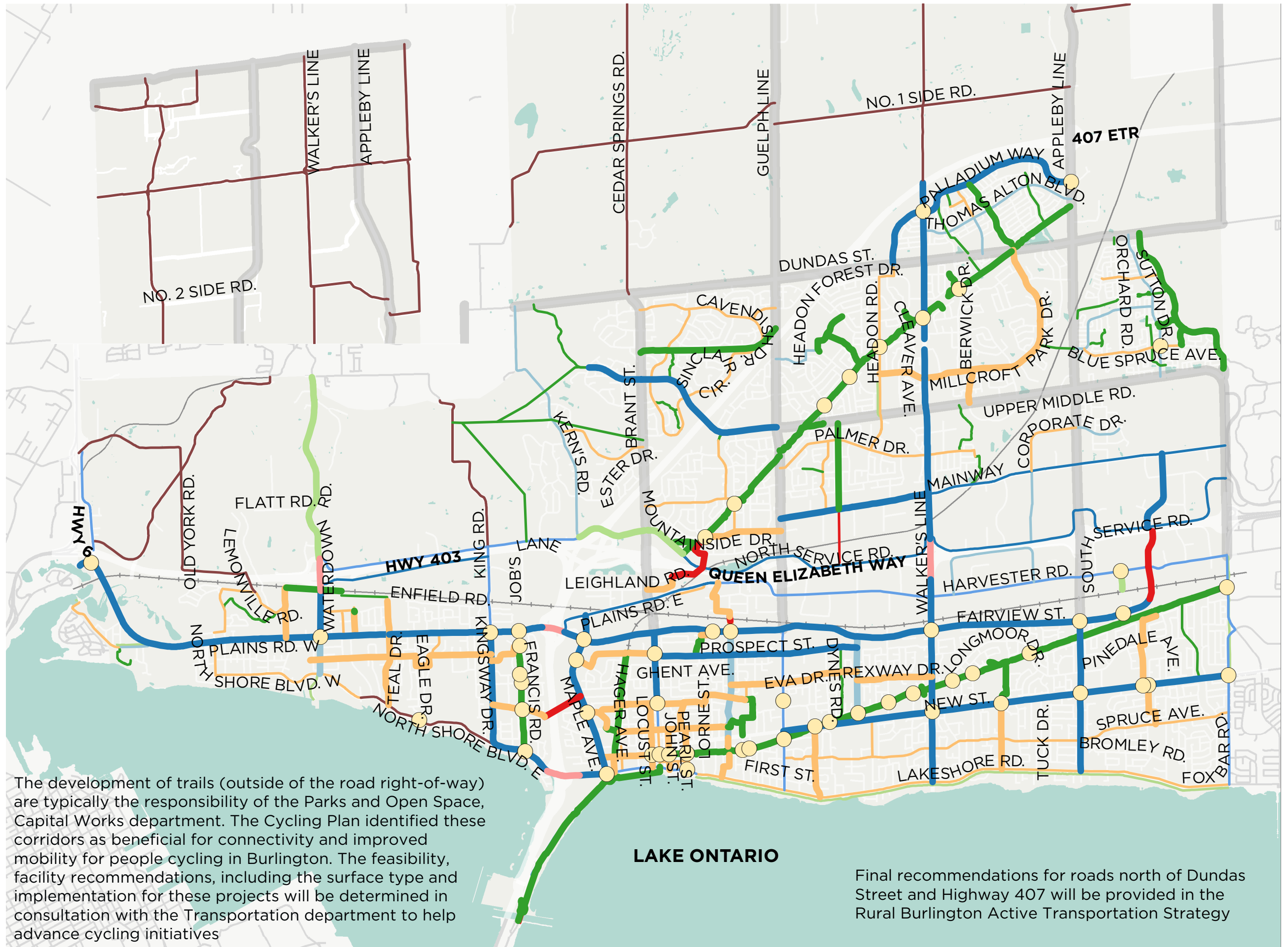
- Multi-use Trail
- Multi-use Path
- Protected Bikeway
- Painted Buffered Bike Lane
- Painted Bike Lane
- Shared Use Lane
- Paved Shoulder
- Grade Separated Connector
- Highway Interchange Crossing

### FEATURES AND BOUNDARIES

- Intersection Improvement
- Regional Road
- + Railway
- Waterbody
- Burlington



Data provided by the City of Burlington, Region of Halton, and Statistics Canada. Map produced July 2019.



The development of trails (outside of the road right-of-way) are typically the responsibility of the Parks and Open Space, Capital Works department. The Cycling Plan identified these corridors as beneficial for connectivity and improved mobility for people cycling in Burlington. The feasibility, facility recommendations, including the surface type and implementation for these projects will be determined in consultation with the Transportation department to help advance cycling initiatives

**LAKE ONTARIO**

Final recommendations for roads north of Dundas Street and Highway 407 will be provided in the Rural Burlington Active Transportation Strategy

# MAP 5A PROPOSED NETWORK

## BURLINGTON CYCLING MASTER PLAN

### SPINE NETWORK

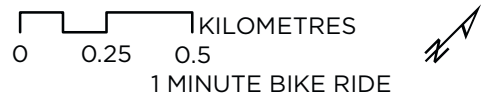
- Multi-use Trail
- Multi-use Path
- Protected Bikeway
- Local Street Bikeway
- Painted Bike Lane
- Grade Separated Connector
- Highway Interchange Crossing

### LOCAL CONNECTOR

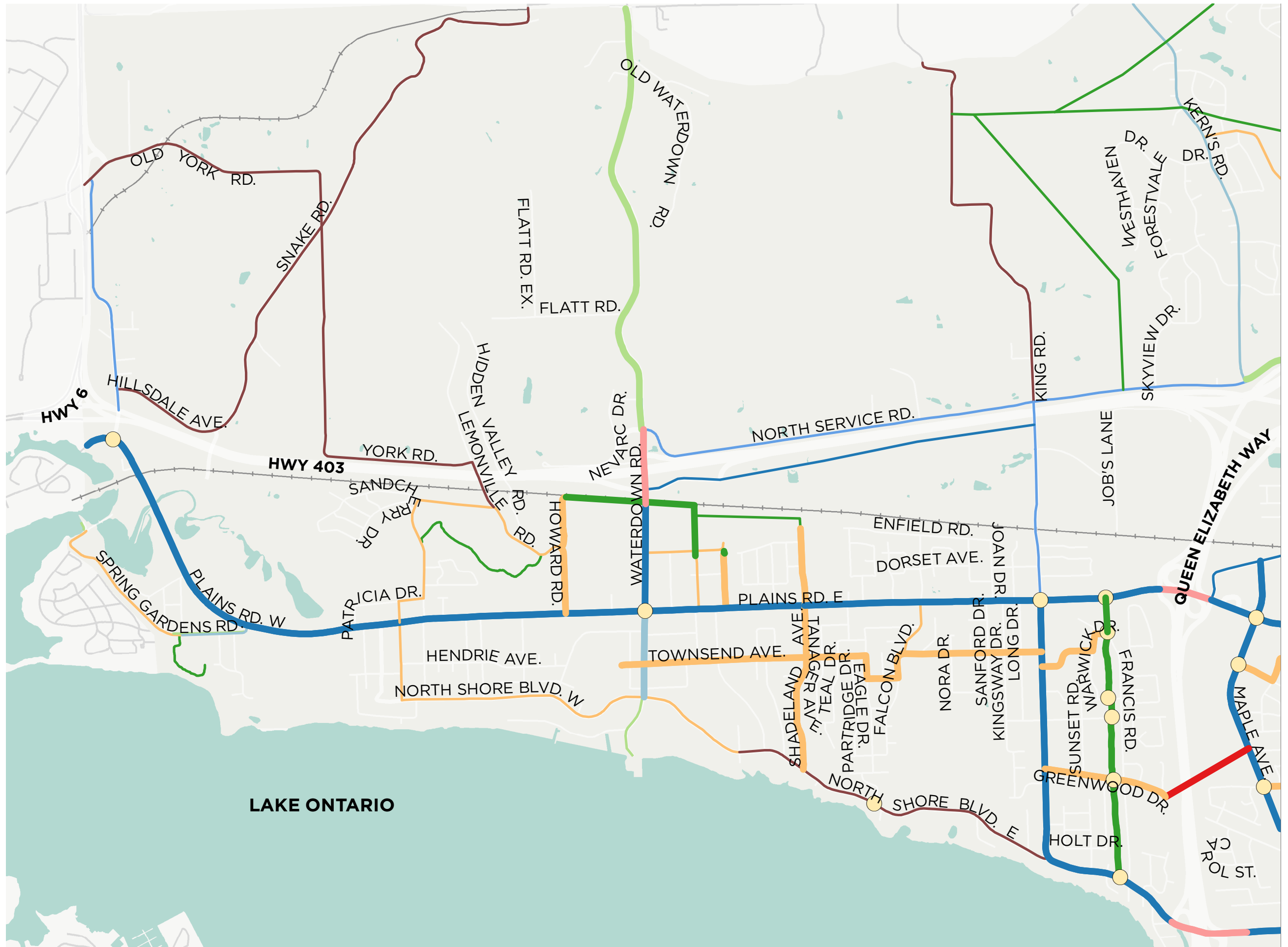
- Multi-use Trail
- Multi-use Path
- Protected Bikeway
- Painted Buffered Bike Lane
- Painted Bike Lane
- Shared Use Lane
- Paved Shoulder
- Grade Separated Connector
- Highway Interchange Crossing

### FEATURES AND BOUNDARIES

- Intersection Improvement
- Regional Road
- + Railway
- Waterbody
- Burlington



Data provided by the City of Burlington, Region of Halton, and Statistics Canada.  
Map produced June 2019.



# MAP 5B PROPOSED NETWORK

## BURLINGTON CYCLING MASTER PLAN

### SPINE NETWORK

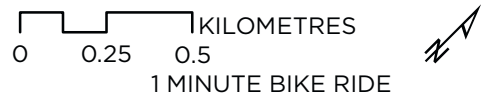
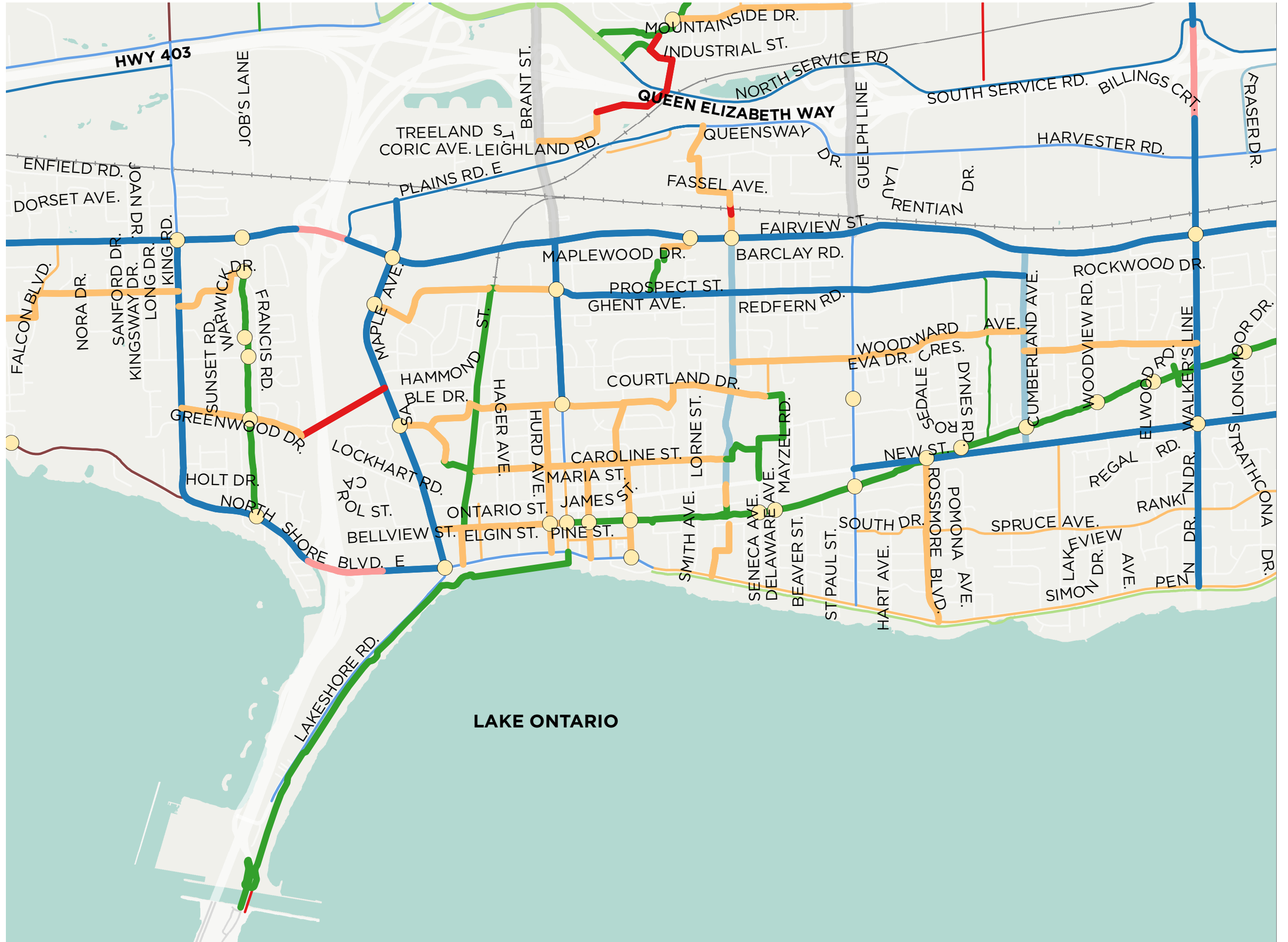
- Multi-use Trail
- Multi-use Path
- Protected Bikeway
- Local Street Bikeway
- Painted Bike Lane
- Grade Separated Connector
- Highway Interchange Crossing

### LOCAL CONNECTOR

- Multi-use Trail
- Multi-use Path
- Protected Bikeway
- Painted Buffered Bike Lane
- Painted Bike Lane
- Shared Use Lane
- Paved Shoulder
- Grade Separated Connector
- Highway Interchange Crossing

### FEATURES AND BOUNDARIES

- Intersection Improvement
- Regional Road
- + Railway
- Waterbody
- Burlington



Data provided by the City of Burlington, Region of Halton, and Statistics Canada.  
Map produced June 2019.

# MAP 5C PROPOSED NETWORK

## BURLINGTON CYCLING MASTER PLAN

### SPINE NETWORK

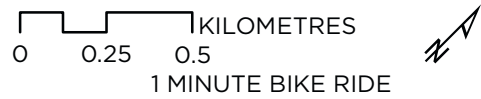
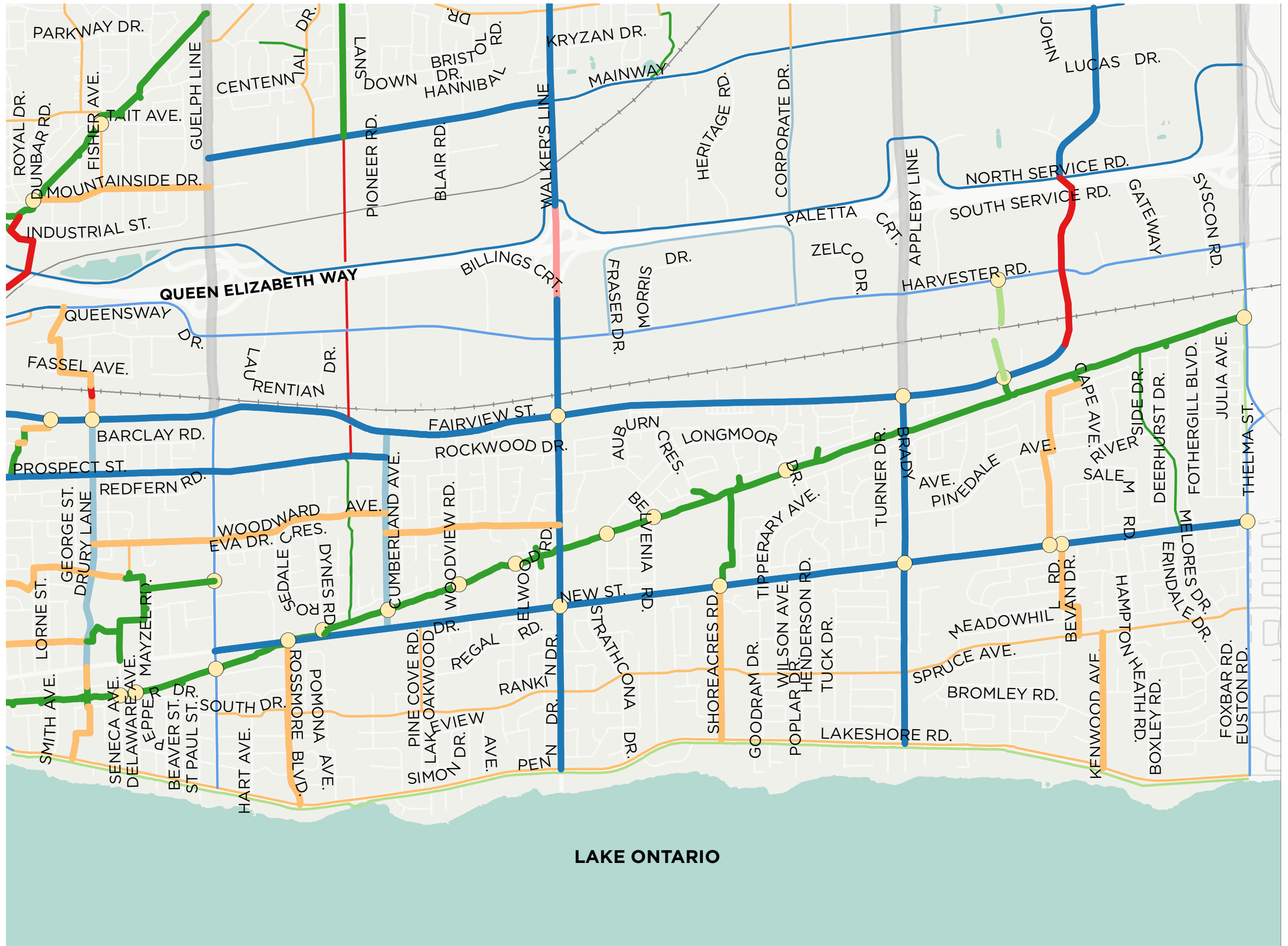
- Multi-use Trail
- Multi-use Path
- Protected Bikeway
- Local Street Bikeway
- Painted Bike Lane
- Grade Separated Connector
- Highway Interchange Crossing

### LOCAL CONNECTOR

- Multi-use Trail
- Multi-use Path
- Protected Bikeway
- Painted Buffered Bike Lane
- Painted Bike Lane
- Shared Use Lane
- Paved Shoulder
- Grade Separated Connector
- Highway Interchange Crossing

### FEATURES AND BOUNDARIES

- Intersection Improvement
- Regional Road
- + Railway
- Waterbody
- Burlington



Data provided by the City of Burlington, Region of Halton, and Statistics Canada.  
Map produced June 2019.



**MAP 5D**  
**PROPOSED NETWORK**  
 BURLINGTON CYCLING  
 MASTER PLAN

SPINE NETWORK

- Multi-use Trail
- Multi-use Path
- Protected Bikeway
- Local Street Bikeway
- Painted Bike Lane
- Grade Separated Connector
- Highway Interchange Crossing

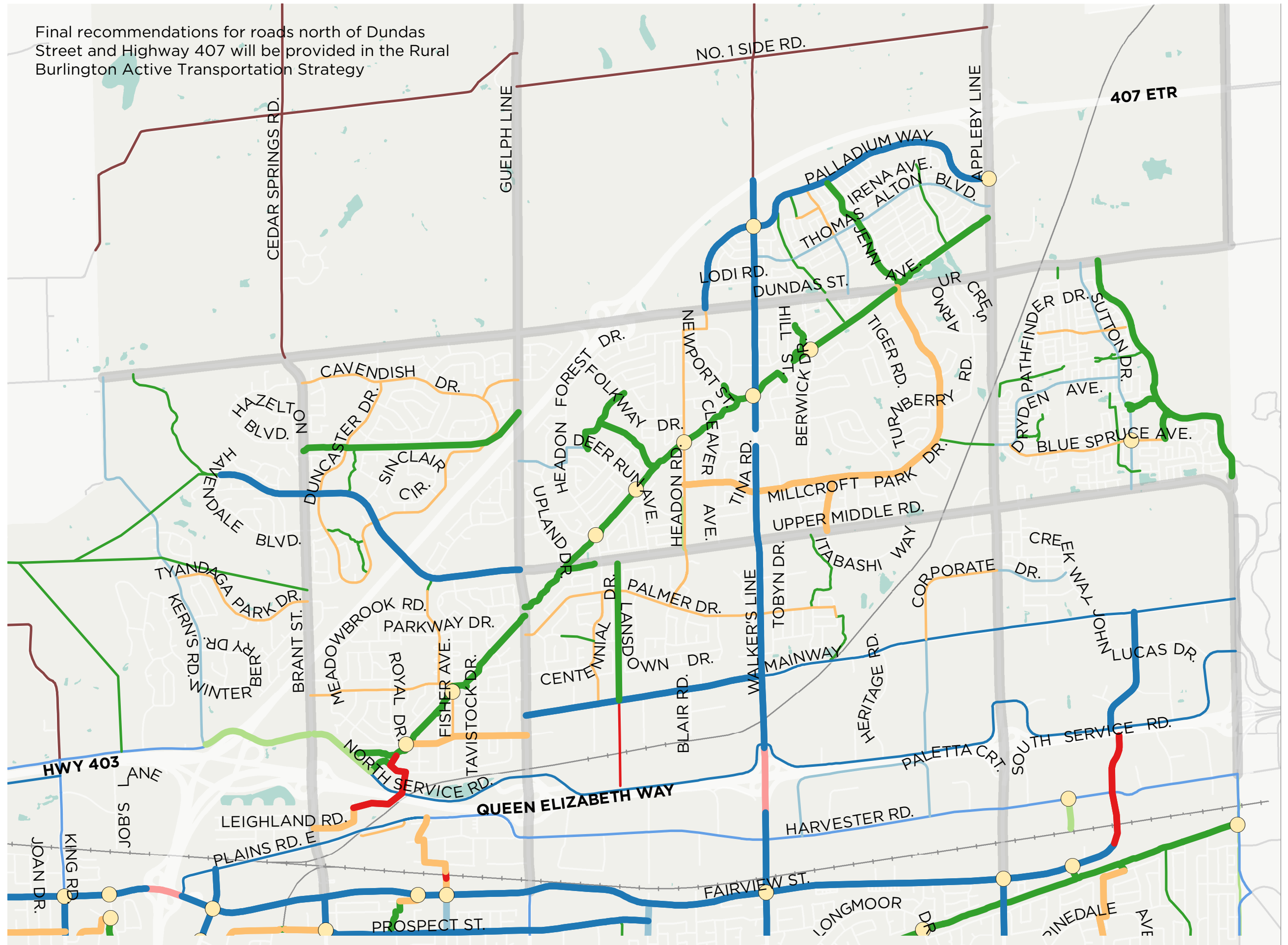
LOCAL CONNECTOR

- Multi-use Trail
- Multi-use Path
- Protected Bikeway
- Painted Buffered Bike Lane
- Painted Bike Lane
- Shared Use Lane
- Paved Shoulder
- Grade Separated Connector
- Highway Interchange Crossing

FEATURES AND  
 BOUNDARIES

- Intersection Improvement
- Regional Road
- + Railway
- Waterbody
- Burlington

Final recommendations for roads north of Dundas Street and Highway 407 will be provided in the Rural Burlington Active Transportation Strategy



Data provided by the City of Burlington, Region of Halton, and Statistics Canada. Map produced June 2019.

**MAP 5E**  
**PROPOSED NETWORK**  
 BURLINGTON CYCLING  
 MASTER PLAN

SPINE NETWORK

- Multi-use Trail
- Multi-use Path
- Protected Bikeway
- Local Street Bikeway
- Painted Bike Lane
- Grade Separated Connector
- Highway Interchange Crossing

LOCAL CONNECTOR

- Multi-use Trail
- Multi-use Path
- Protected Bikeway
- Painted Buffered Bike Lane
- Painted Bike Lane
- Shared Use Lane
- Paved Shoulder
- Grade Separated Connector
- Highway Interchange Crossing

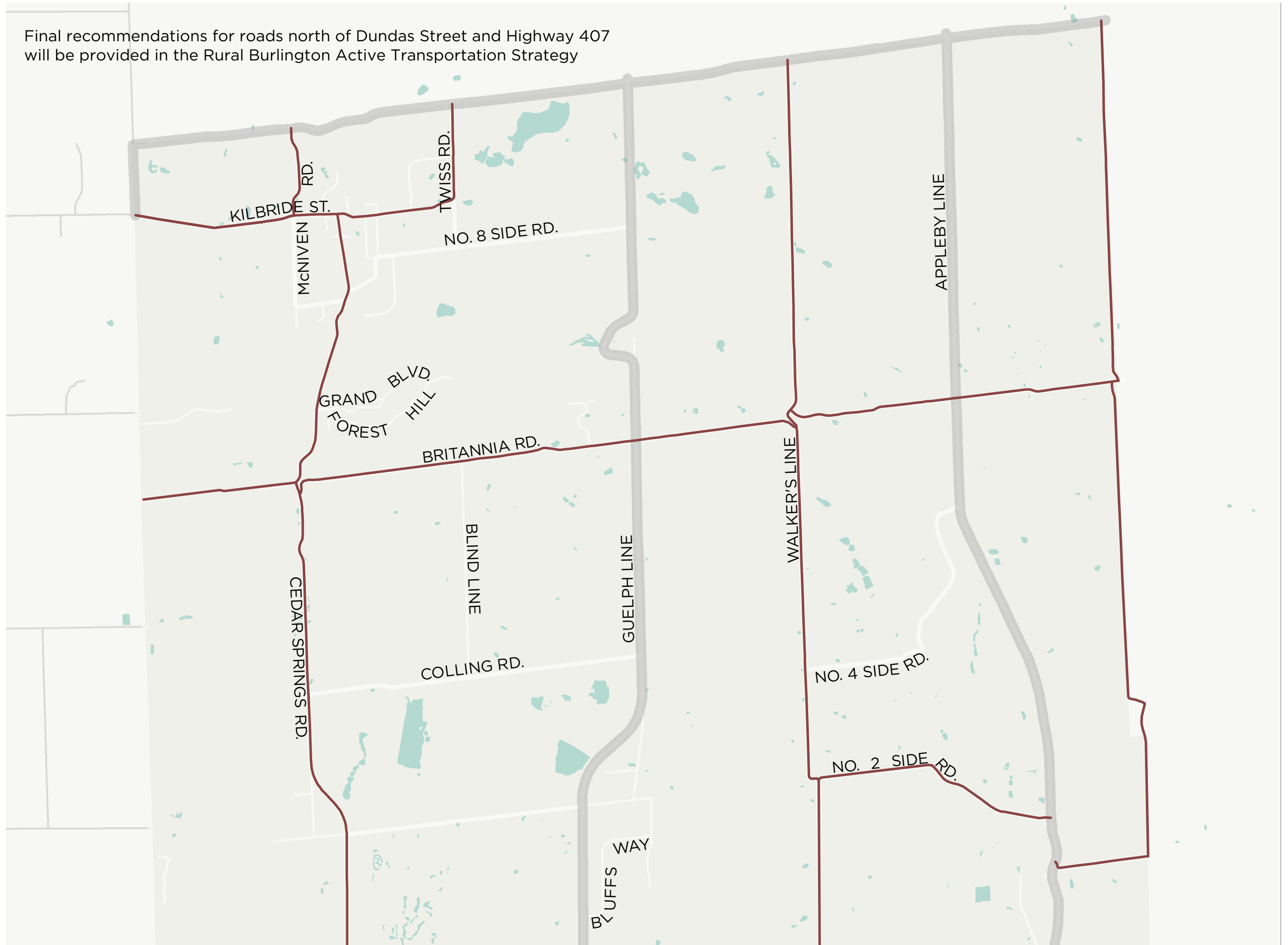
FEATURES AND  
 BOUNDARIES

- Intersection Improvement
- Regional Road
- + Railway
- Waterbody
- Burlington



Data provided by the City of Burlington, Region of Halton, and Statistics Canada.  
 Map produced June 2019.

Final recommendations for roads north of Dundas Street and Highway 407 will be provided in the Rural Burlington Active Transportation Strategy



# MAP 6 MINIMUM GRID

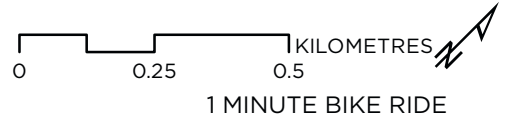
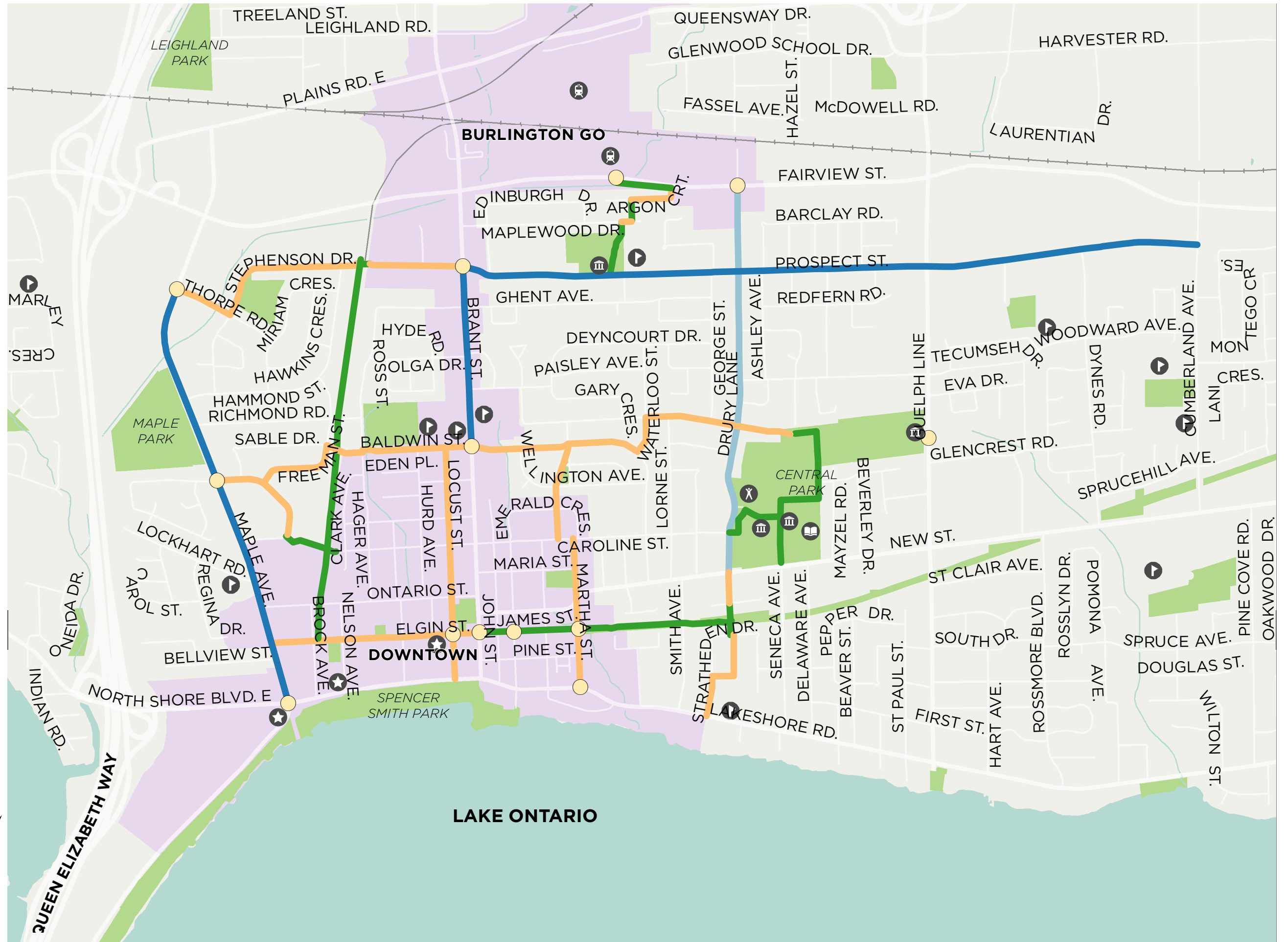
## BURLINGTON CYCLING MASTER PLAN

### FACILITY TYPES

- █ Protected Bikeway
- █ Painted Bike Lane
- █ Local Street Bikeway
- █ Multi-Use Trail
- Intersection Improvement

### FEATURES AND BOUNDARIES

- GO Station
- Library
- Sports Facility
- Cultural Facility
- Community Centre
- School
- Park
- Railway
- Mobility Hub
- Waterbody
- Burlington



# MAP 7 PROPOSED PROJECT PRIORITY

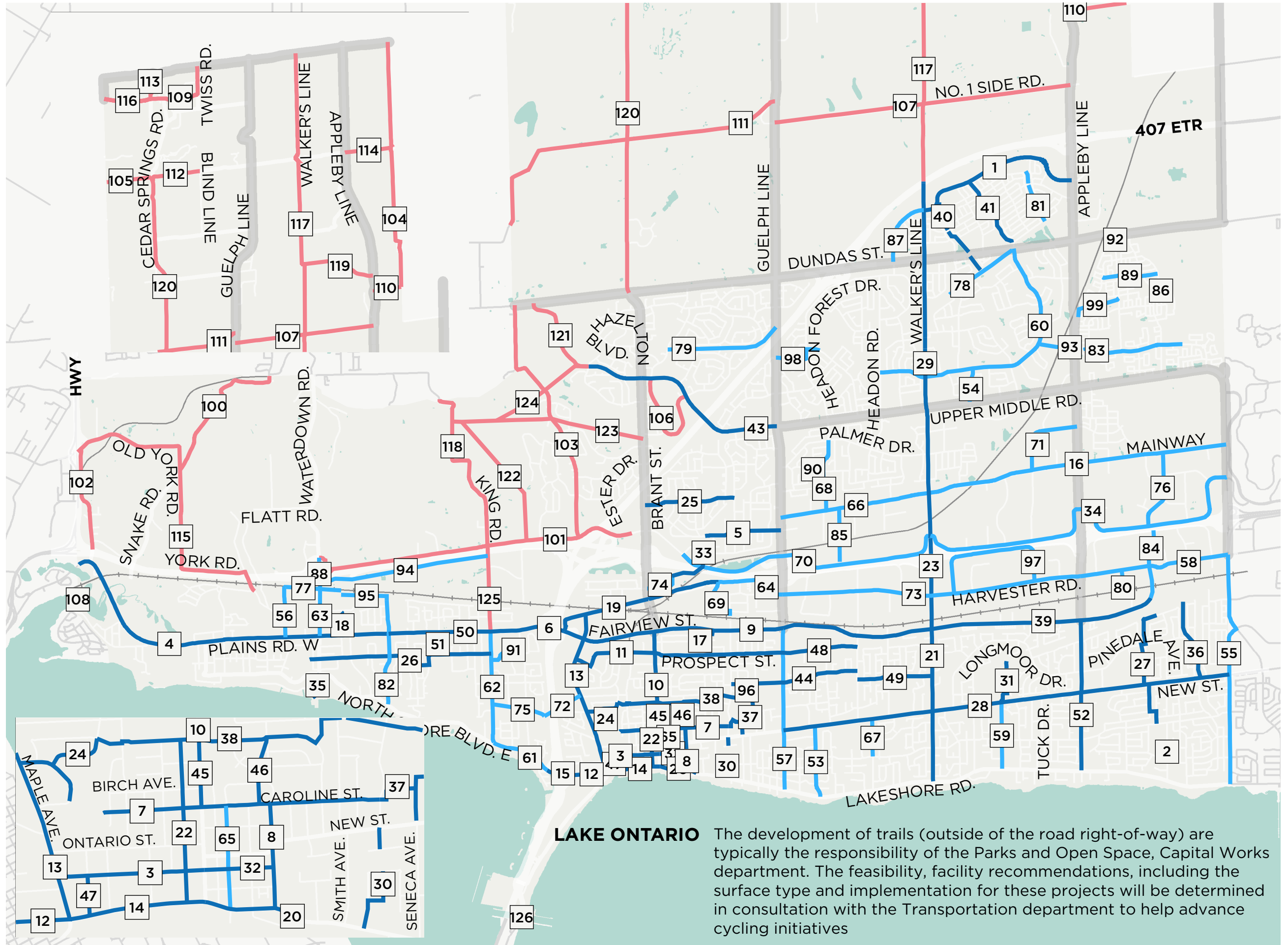
## BURLINGTON CYCLING MASTER PLAN

### PROJECT PRIORITY

- Short-Term
- Medium-Term
- Long-Term

### FEATURES AND BOUNDARIES

- Regional Road
- Railway
- Waterbody
- Burlington



0 0.75 1.5 KILOMETRES  
5 MINUTE BIKE RIDE



Data provided by the City of Burlington, Region of Halton, and Statistics Canada. Map produced January 2020.

**LAKE ONTARIO** The development of trails (outside of the road right-of-way) are typically the responsibility of the Parks and Open Space, Capital Works department. The feasibility, facility recommendations, including the surface type and implementation for these projects will be determined in consultation with the Transportation department to help advance cycling initiatives