

## **Our Emergency Response Goal**

Continue to protect the health and safety of our community and staff and do our part to limit the spread of COVID-19.

# **COVID-19 Emergency Response Update**

Council Meeting  
April 20, 2021

# Where are We Now

City of Burlington remains in a declared state of emergency (since March 21, 2020)

- **April 3, 2021** – provincewide emergency brake goes into effect for at least four weeks
  - Prohibiting indoor organized public events and social gatherings and limiting the capacity for outdoor organized public events or social gatherings; restricting capacity limits for in-person shopping in all retail settings; prohibiting personal care services; prohibiting indoor and outdoor dining and permitting operate by take-out, drive-through, and delivery only; prohibiting the use of facilities for indoor or outdoor sports and recreational fitness (e.g., gyms) with very limited exceptions; requiring day camps to close; and, limiting capacity at weddings, funerals, and religious services, rites or ceremonies
- **April 8, 2021** – Province declared a third provincial emergency for four weeks
  - province-wide Stay-at-Home order requiring everyone to remain at home except for essential purposes, such as going to the grocery store or pharmacy, accessing health care services (including getting vaccinated), for outdoor exercise , or for work that cannot be done remotely.
- **April 12, 2021** – Province announced schools will remain closed after spring break with students moving to online learning for an indefinite period
- **April 17, 2021** – Provincial Shutdown order issued for additional two weeks
  - Province had few options left – focus is to limit mobility, enforce rules and get more vaccines in arms
  - Strengthening enforcement powers of police and by-law officers
  - Starting April 19 - Closing interprovincial borders to Quebec and Manitoba
  - Prohibiting all outdoor social gatherings and organized public events, except for with members of the same household or one other person from outside that household who lives alone or a caregiver for any member of the household; close all non-essential workplaces in the construction sector; reduce capacity limits to 25 per cent in all retail settings where in-store shopping is permitted; and close all outdoor recreational amenities, such as golf courses, basketball courts, soccer fields, and playgrounds with limited exceptions; limiting the capacity of weddings, funerals, and religious services, rites or ceremonies indoors or outdoors.

**April 18: Amendments include re-opening playgrounds and refinement of enforcement powers**

# Today's Agenda

1. Disposition of Staff Recommendation from Special COVID Verbal update – April 17, 2021
2. Update on information requested through Special Council meeting – April 17, 2021
3. By-law Enforcement Proposal & Staff Recommendation
4. BLT/ECG/Service Lead Operating Decisions Summary

## Staff Recommendations

Authorize the Director, Roads, Parks & Forestry and the Director, Recreation, Community & Culture to implement the closure decisions, park parking lots (in the identified order of priority) and washrooms, and report costs as part of the in-year financial update.

Note: Highlighted text is subject to change depending on the outcome of Council discussions.

# Information Requests Update

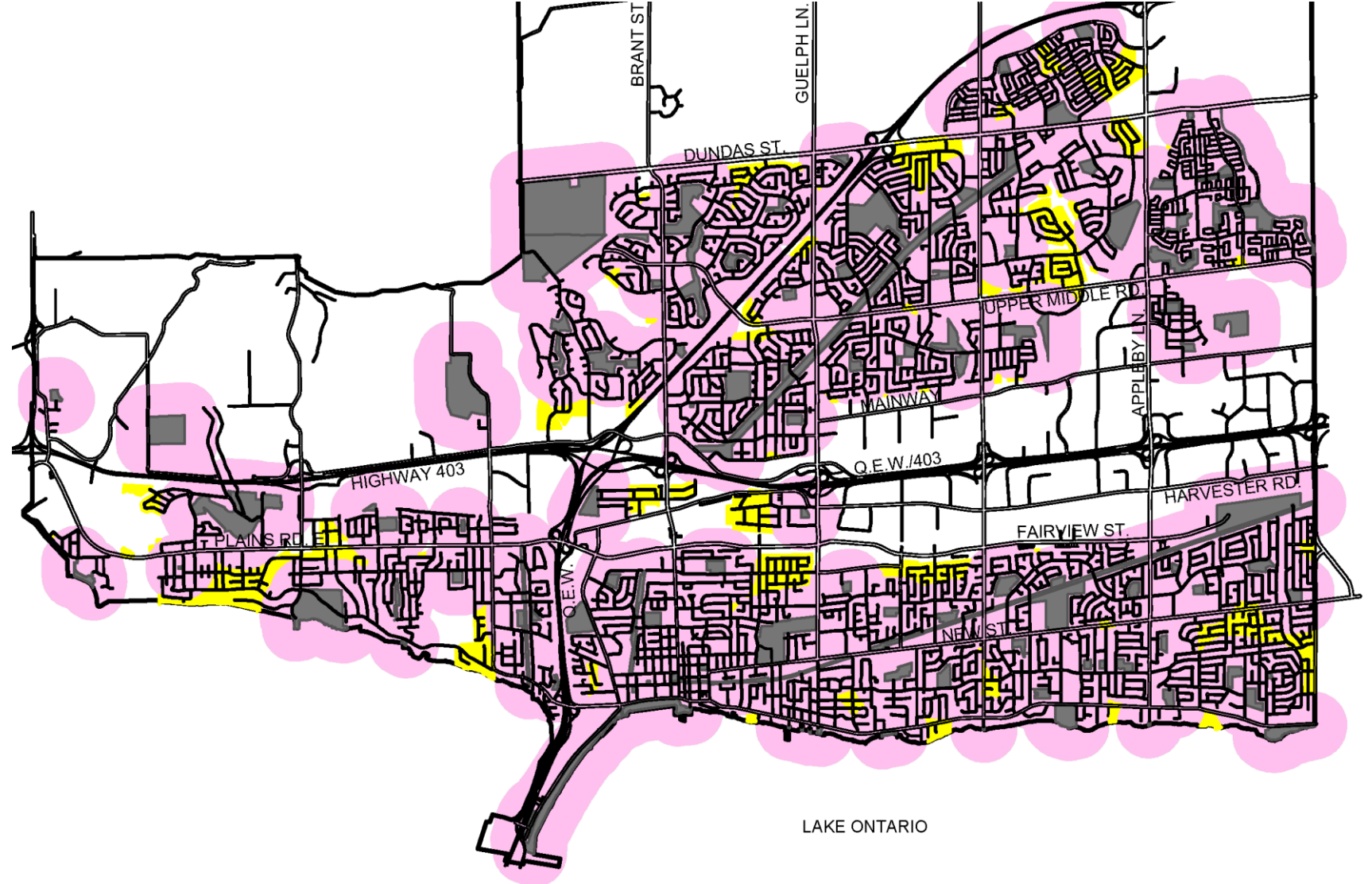
- **Conservation Halton Update – Transportation Services:**
  - CH parks are permitted to remain open; only trails, washroom facilities and playgrounds will be available for public use,
  - All programs and events are cancelled or closed (challenge course, boat rental etc.),
  - Lowered capacity for certain parks based on their visitation data through ParkPass system which provides insights on which parks can experience minor crowding under certain scenarios.
- **Data about traffic to parks in Burlington – Transportation Services:**
  - Staff are reviewing this request to determine if it's possible to collect cellular data outside of Halton Region at City Parks.
- **Advocacy – Government Relations:**
  - Playground closures: Province's reversal on playground closures eliminates need for advocacy at this time.
  - Construction Noise: On-going matter and understanding of definition of non-essential construction is needed to determine extent of advocacy needed. Council resolution possible for May committee.
- **Accessibility Impact – Engineering:**
  - Province's reversal on playground closures eliminates need for accessibility impact assessment
- **Burlington Parks Mapping – Engineering** (note: staff will be commenting on this item):
  - Identification of Burlington areas that are not within walking distance to a park - refer Slide 7

# Parks Within 5 Minute Walking Distance

Residential areas not within 400m (5-minute walk) are shaded in yellow.

## Legend

- 5 Minute Walk (400m)
- Residential Areas
- Parks



# Information Requests Update

- **Regional Medical Officer of Health Reducing COVID 19 outdoors– Mayor’s Office/City Manager’s Office** (note: the Mayor will be commenting on this item):
  - The risk of COVID-19 transmission from using outdoor amenities is low. The greater risk is from gatherings and interactions associated with the use of outdoor amenities.
  - Any actions that reduce crowding among people from different households should be considered. However, such actions need to be balanced against the importance of outdoor activity for both physical and mental wellbeing.
  - Wearing a mask is strongly recommended when in close proximity to those from outside a person’s immediate household, even outdoors.
- **Essential & Non-Essential Construction and Noise – Building & By-law** (note: staff will be commenting on this item):
  - O.Reg 82/20 Section 43 was amended and includes a variety of essential construction activities (subsections a-m)
    - Health care/long term care, municipal infrastructure
    - Industrial uses (electricity generation, natural gas, supply of resources)
    - Schools, colleges, universities, child-care centres
    - Projects commenced before April 17 (warehousing, storage, distribution)
    - All residential construction activities and related service
  - Construction Noise – Municipal Act O.Reg 131/20
    - Healthcare (all day), other construction (6am – 10pm). This Regulation is pending revocation on October 7, 2021.

# Information Requests Update

- **Pop up options for park lending library – Recreation, Community & Culture** (note: staff will be commenting on this item):
  - Staff are recommending the re-opening of this program
  - Promotes outdoor activity and physical literacy with children
  - A nice add-on in this stay-at-home order & online schooling period
  - Customers can:
    - Reserve equipment online at [www.Burlington.ca/playlending](http://www.Burlington.ca/playlending)
    - Pick up the equipment – curbside pick-up
    - Note equipment is sanitized in between uses
    - Equipment should be used with members of your own household and in your neighbourhood

# **By-law Enforcement Proposal & Staff Recommendation**

Kerry Davren, Manager By-Law  
Enforcement

# Current By-law Enforcement Requests

- 940 Noise (after hours)
- Adult Entertainment
- Business License
- Driving Schools
- Election Signs
- Exterior Maintenance
- Firearms
- Fireworks
- Fortification
- COVID (Masks, Physical, Reopening Ontario Act (ROA))
- Miscellaneous
- Noise & Nuisance
- Property Standards
- Signs
- Swimming Pool Enclosure
- Taxi
- Vital Services
- Zoning
- +++ enforcement of by-laws in Other Departments

# By-law Enforcement Proposed Service Level in a Pandemic

## Recommended Priority of Enforcement Focus

- COVID (Masks, Physical, ROA)
- Swimming Pool Enclosure
- Property Standards (safety only)
- Vital Services
- Taxi
- Firearms
- Fireworks (sales & storage)
- Fortification

## Enforcement of All Other Bylaws

Messaging re: enforcement is on priority by-laws at this time.

## For Future Consideration\* (budget Impact)

- Licensing
- Signs

\* This item to be discussed through CSSRA service re-design in May Committee

# Staff Recommendations

Authorize the Director, Building & By-Law to focus enforcement on priority by-laws (as identified) and implement an appropriate communication plan for the duration of the pandemic or until the emergency orders are revoked.

# Burlington Leadership Team/ECG/ Service Leads Decision Summary

- Halton Court Services
  - Remain open with restricted hours available from 9:00 a.m. to 1:00 p.m.
- Marriage Licensing/Commissioning
  - Marriage license appointments continue for Halton residents

## Stay Tuned

Staff will continue to monitor and report to Council as required through memo or verbal updates.