



Major Transit Station Area (MTSA) Area-Specific Planning Project

Burlington Inclusivity Advisory Committee Meeting

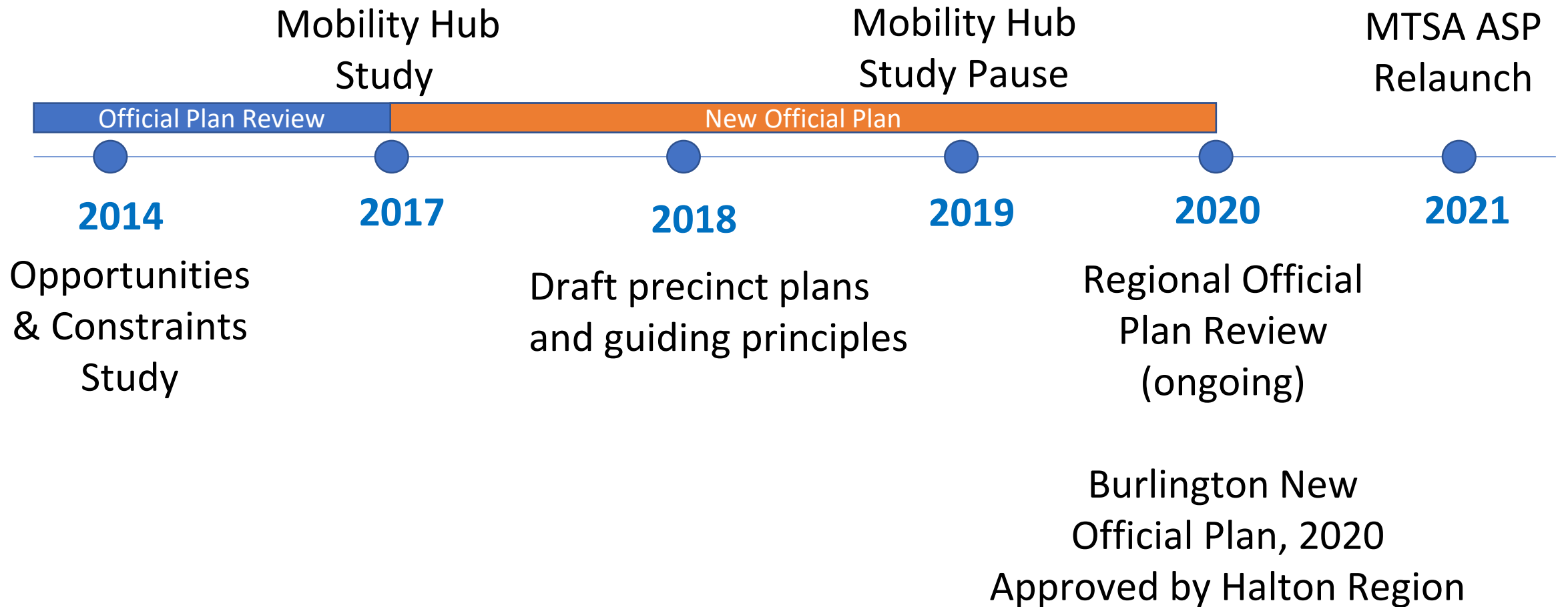
September 17, 2021 via Zoom

Setting the Context

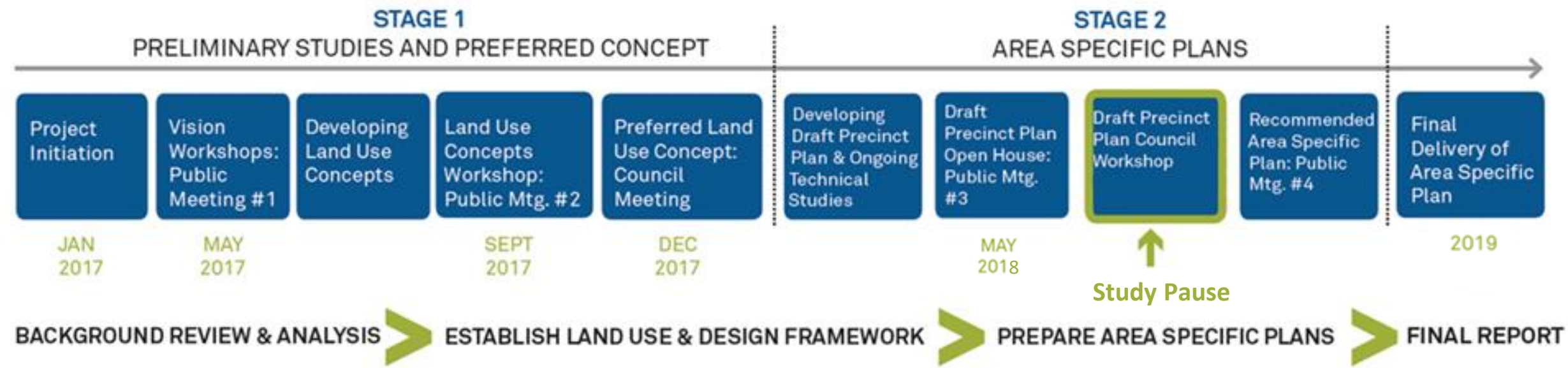
- Planning for Complete Communities
- Area-Specific Plans
- Provincial, Regional and City initiatives



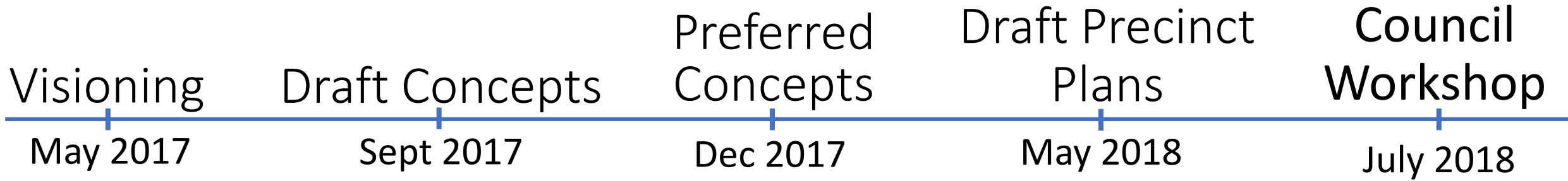
Area-Specific Planning in Burlington



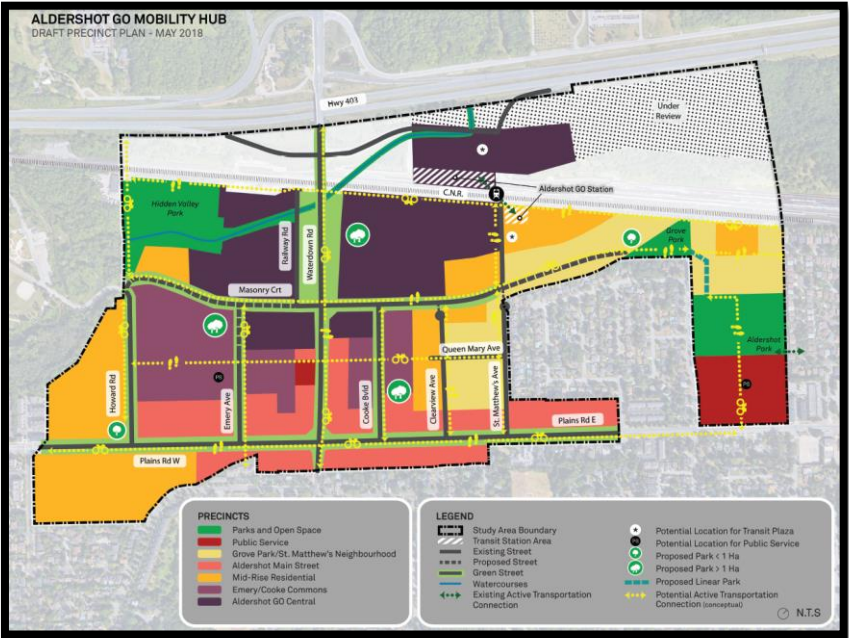
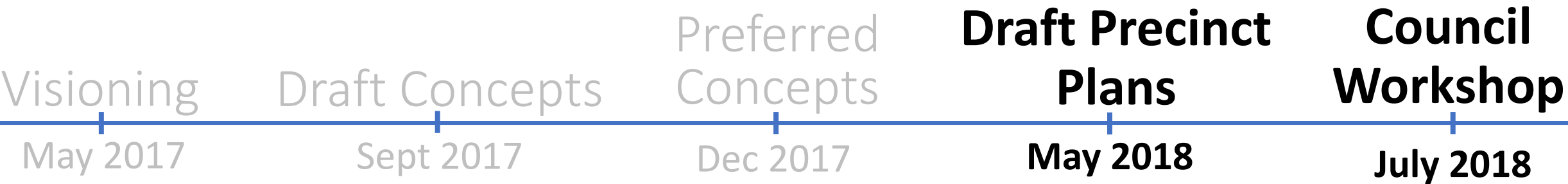
Mobility Hubs Study Overview



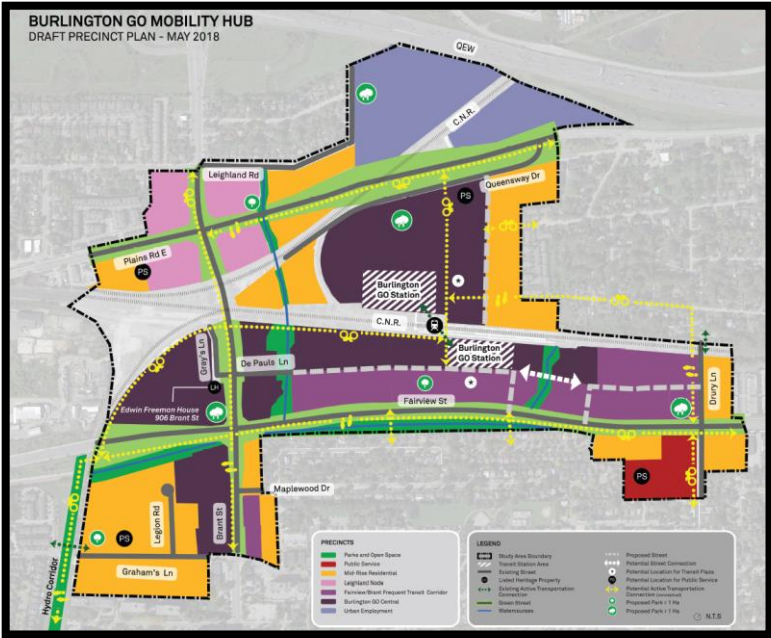
Mobility Hubs Study Engagement



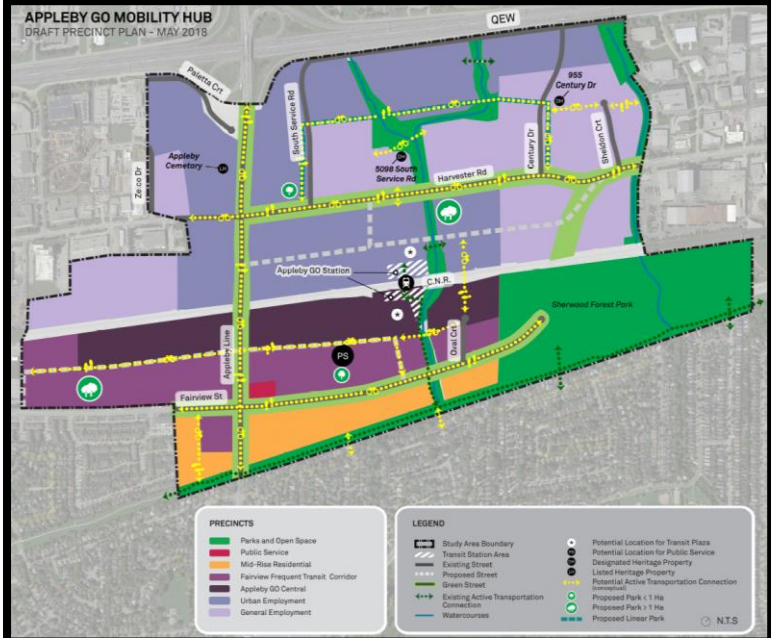
Mobility Hubs Study Engagement



ALDERSHOT GO



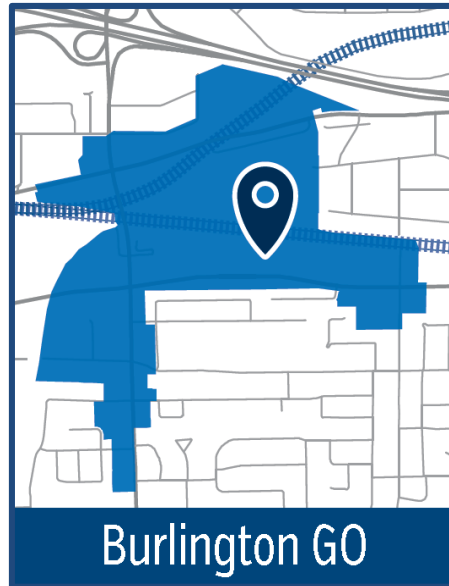
BURLINGTON GO



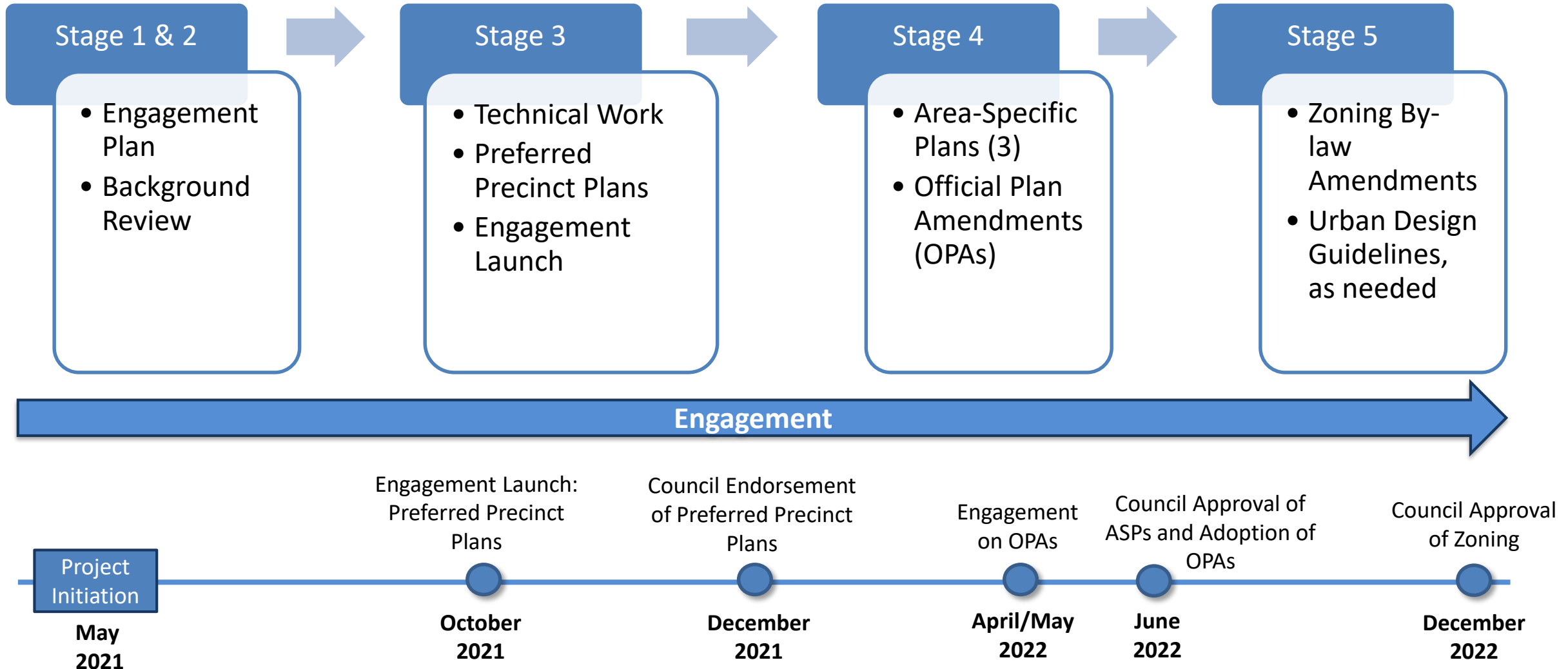
APPLEBY GO

MTSA Area-Specific Planning Project

- the completion of all required technical studies,
- further public and stakeholder engagement starting this Fall,
- completion of three (3) area-specific plans,
- implementing Official Plan and Zoning Bylaw amendments, and
- other implementation strategies as required



MTSA ASP Project Timeline



Next Steps

September

- Background Report
- Final Engagement Plan
- City-wide mailer

October Engagement Opportunities

- Online Workbook
- Virtual Public Information Centers (PICs)
- “Talk with a Planner”

December

- Recommended Preferred Precinct Plans to Council

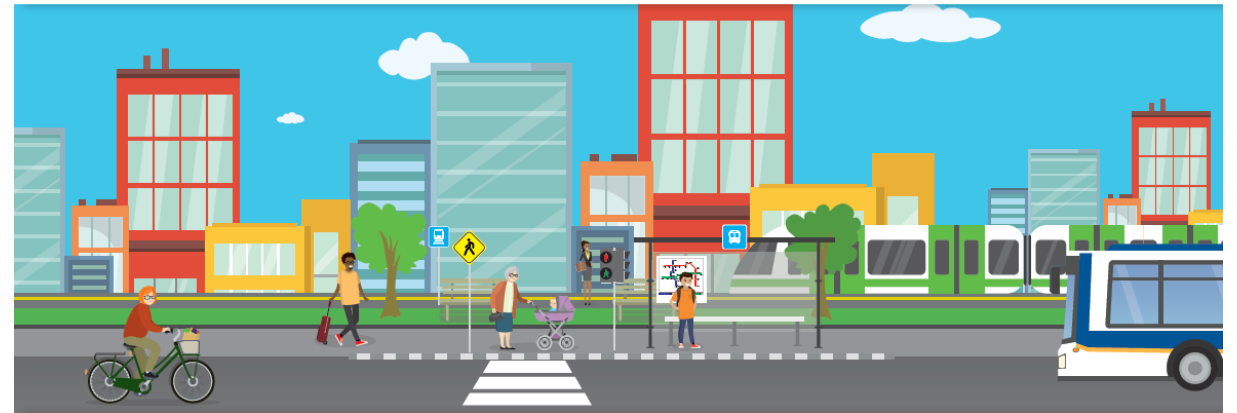
getinvolvedburlington.ca/mtsa

Planning for Burlington's Major Transit Station Areas

📍 Aldershot GO Station

📍 Burlington GO Station

📍 Appleby GO Station



getinvolvedburlington.ca

CITY OF
Burlington

Questions?



getinvolvedburlington.ca/mtsa