



# **Major Transit Station Area (MTSA) Area-Specific Planning Project**

**Burlington Seniors Advisory Committee Meeting**

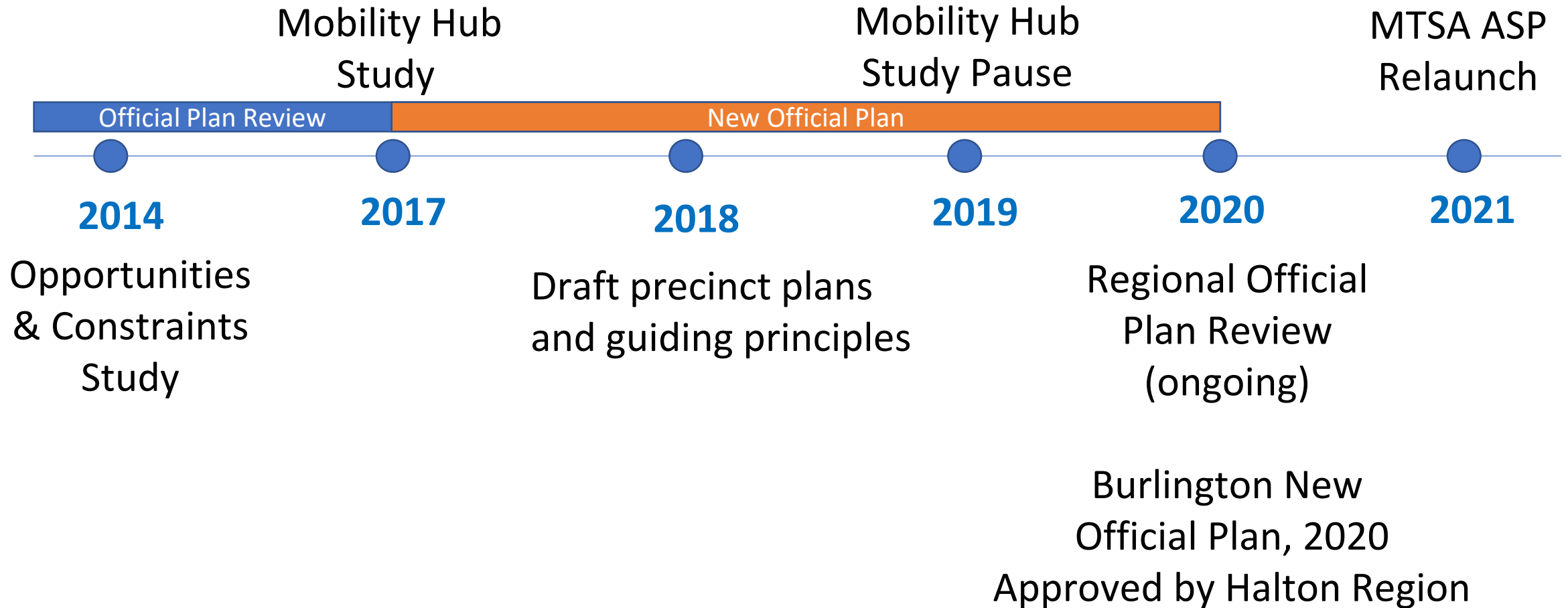
**September 27, 2021 via Zoom**

# Setting the Context

- Planning for Complete Communities
- Area-Specific Plans
- Provincial, Regional and City initiatives



# Area-Specific Planning in Burlington

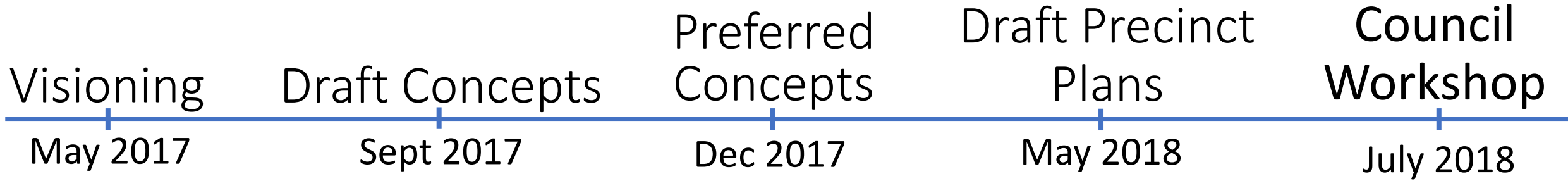


# Mobility Hubs Study Overview

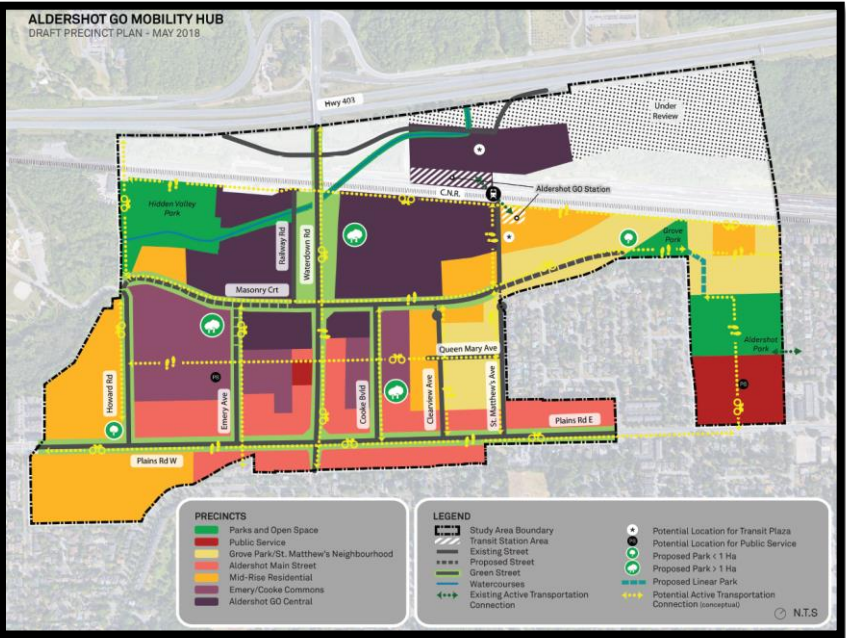
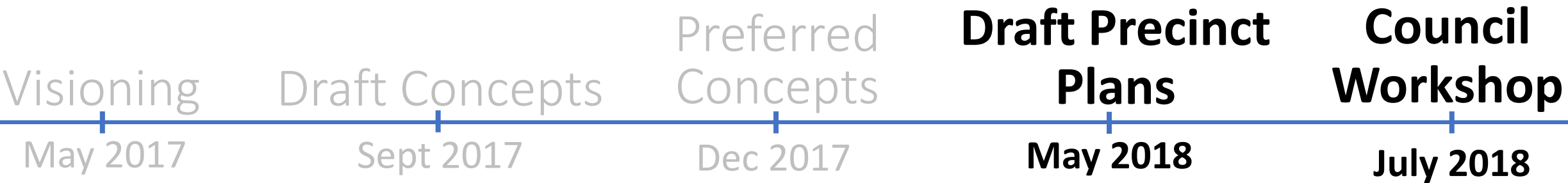




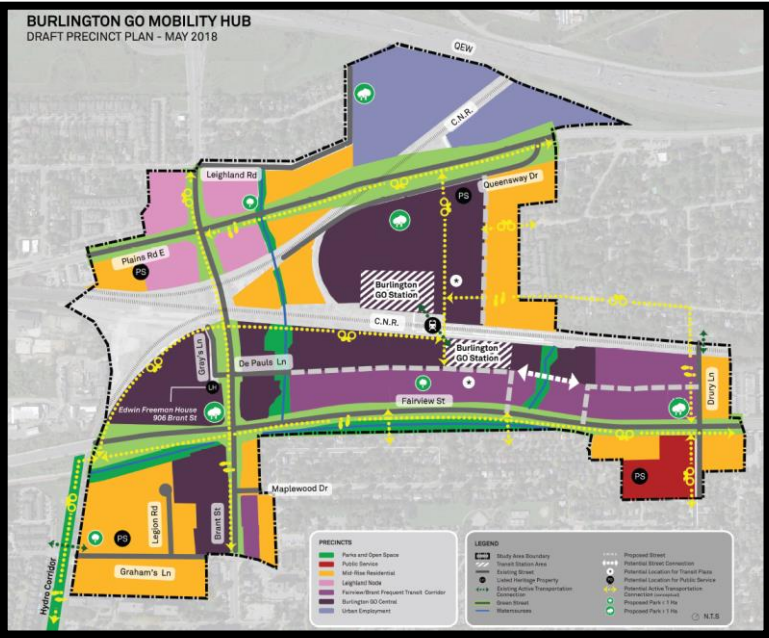
# Mobility Hubs Study Engagement



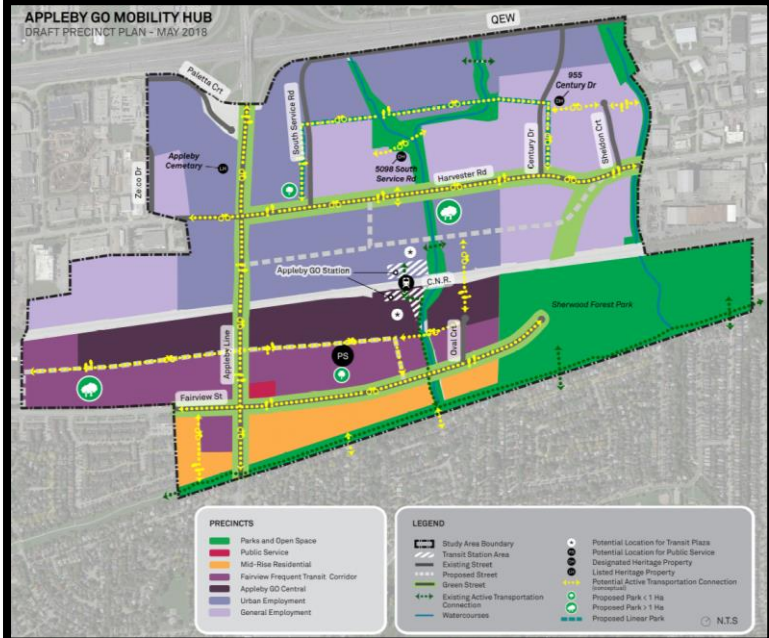
# Mobility Hubs Study Engagement



ALDERSHOT GO



BURLINGTON GO

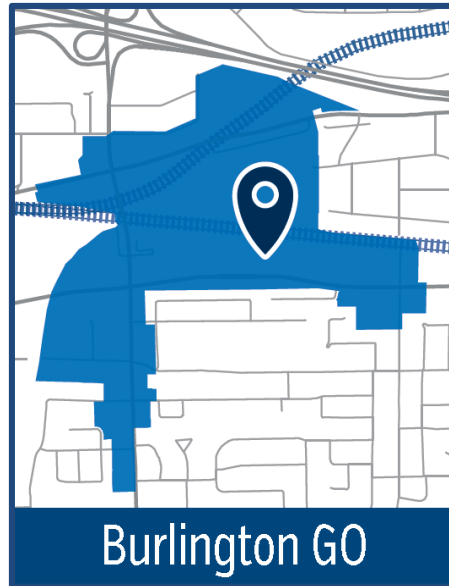


APPLEBY GO

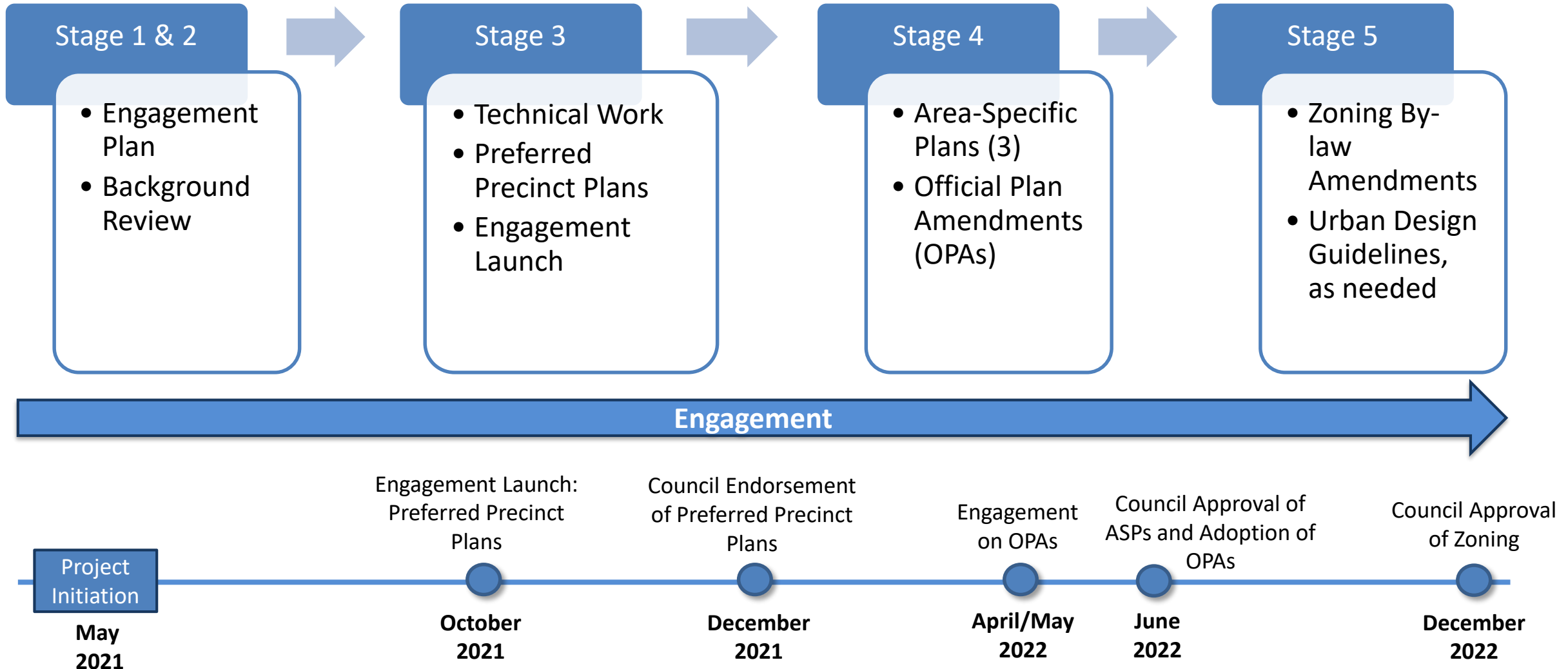


# MTSA Area-Specific Planning Project

- the completion of all required technical studies,
- further public and stakeholder engagement starting this Fall,
- completion of three (3) area-specific plans,
- implementing Official Plan and Zoning Bylaw amendments, and
- other implementation strategies as required



# MTSA ASP Project Timeline





# Next Steps

## September

- Background Report & Engagement Plan
- City-wide mailer

## October Engagement Opportunities

- Online Workbook
- Virtual Public Information Centers (PICs)
- “Talk with a Planner”

## December

- Recommended Preferred Precinct Plans to Council

### **Virtual Public Information Centres (PICs) Dates 7-9pm**

Aldershot GO: Wed. Oct 13<sup>th</sup>

Burlington GO: Tues. Oct 19<sup>th</sup>

Appleby GO: Tues. Oct 26<sup>th</sup>

All MTSA: Tues. Nov. 2<sup>nd</sup>

# Questions?

## Planning for Burlington's Major Transit Station Areas

📍 Aldershot GO Station

📍 Burlington GO Station

📍 Appleby GO Station



[getinvolvedburlington.ca](https://getinvolvedburlington.ca)

CITY OF  
**Burlington**