

PREPARED BY HEMSON FOR REGION OF HALTON

## DRAFT PREFERRED GROWTH CONCEPT LAND NEEDS ASSESSMENT

November 2021

Draft prepared for November 2021 reporting to Halton Regional Council. The final LNA will be prepared in conjunction with proposed Official Plan Amendments in 2022.



1000 - 30 St. Patrick Street, Toronto ON M5T 3A3  
416 593 5090 | [hemson@hemson.com](mailto:hemson@hemson.com) | [www.hemson.com](http://www.hemson.com)

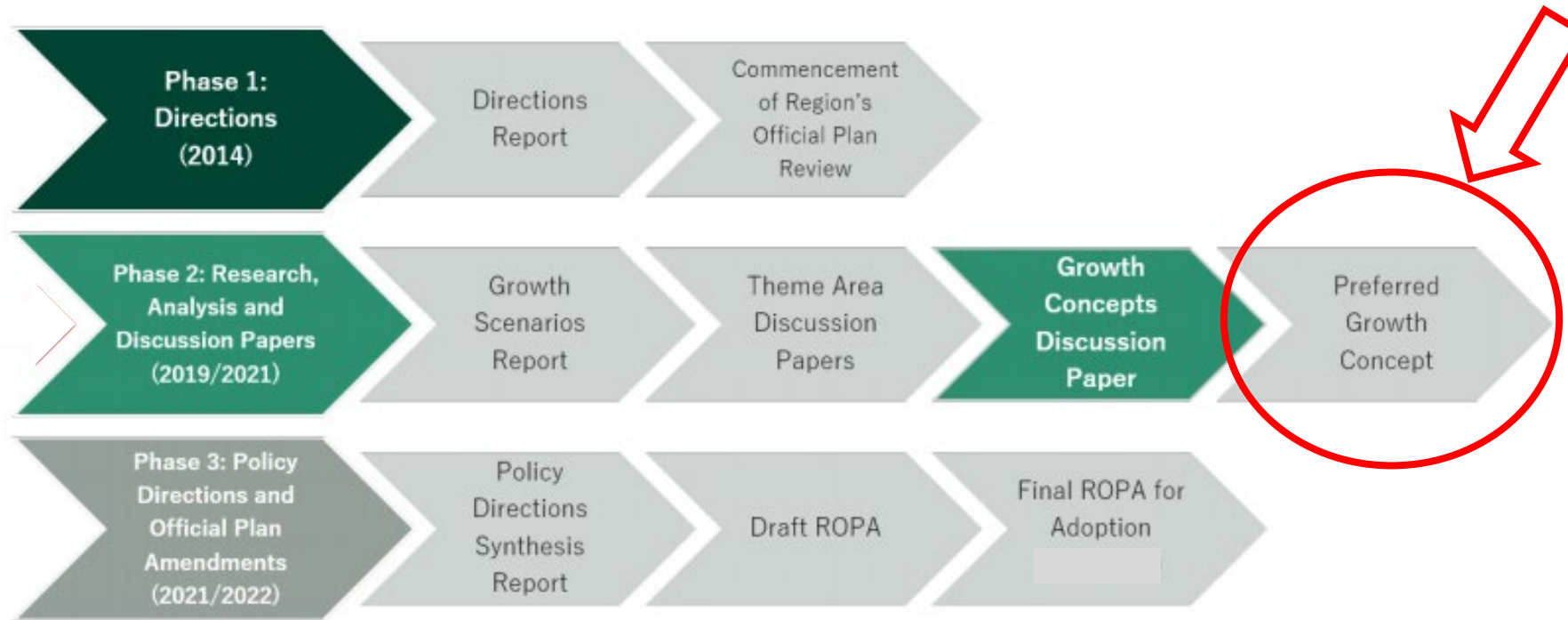
# PL-06-22: Submission on the Region of Halton's Draft Preferred Growth Concept and Draft Land Needs

Community Planning, Regulation & Mobility  
Committee Meeting

January 11, 2022



# Halton Region's Regional Official Plan Review Process



## Integrated Growth Management Strategy (IGMS) – Growth Concepts Discussion Paper

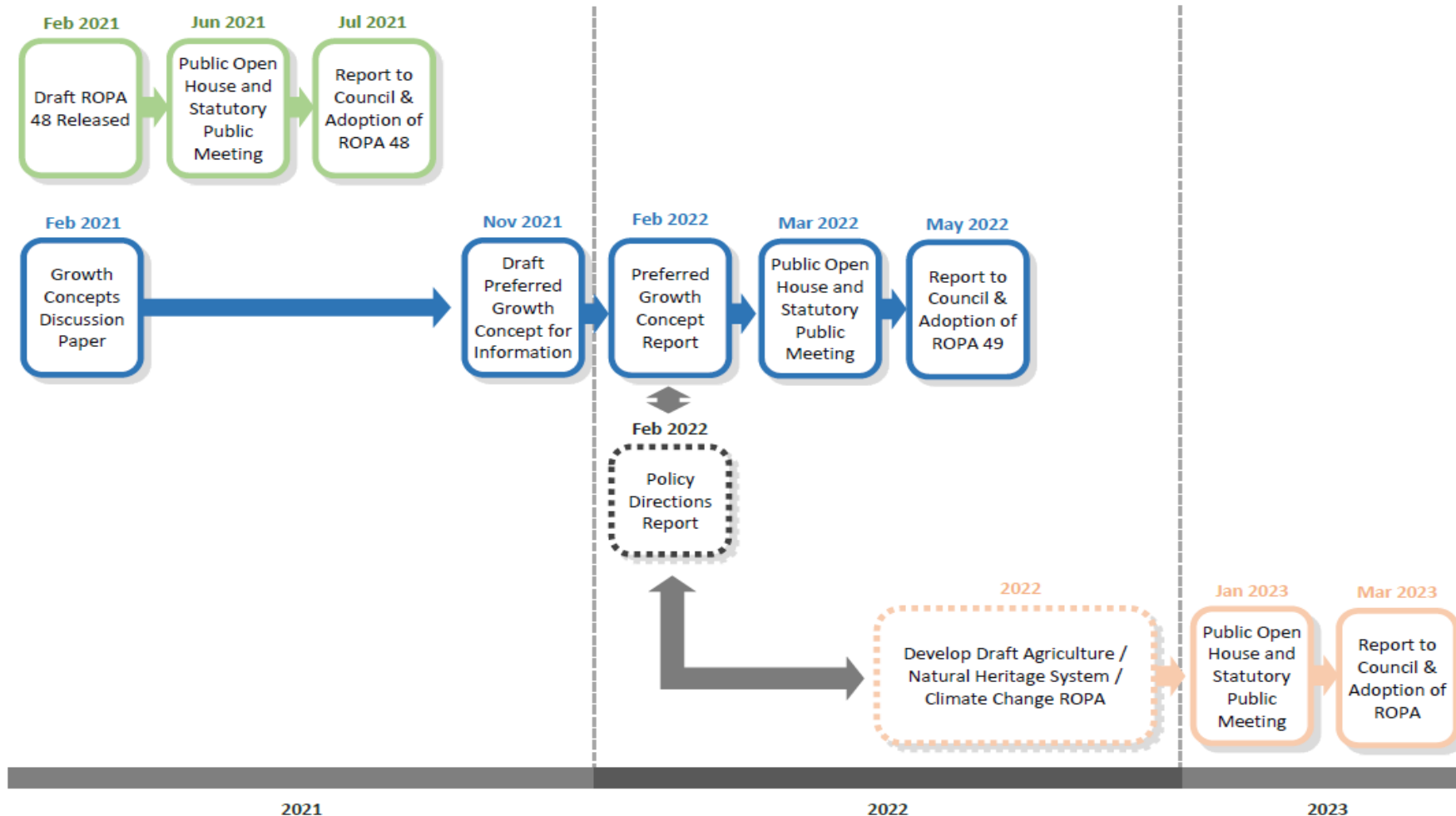
- Includes evaluation of four Growth Concepts
- Identifies preliminary settlement boundary expansion areas
- Used to determine Preferred Growth Concept brought forward as part of draft ROPA

# Work Plan Timeline

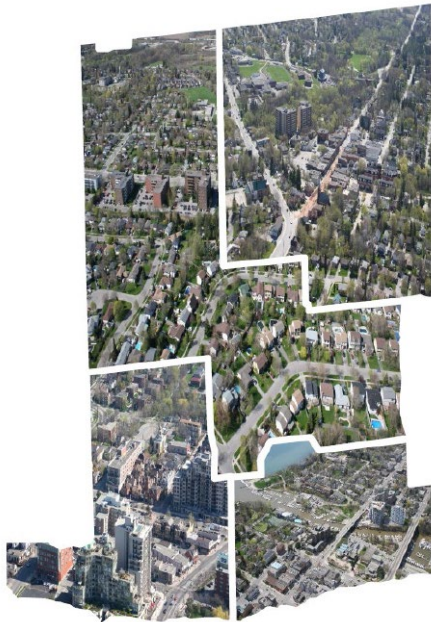
Amendment on Regional Urban Structure (ROPA 48)

Amendment on Integrated Growth Management Strategy (ROPA 49)

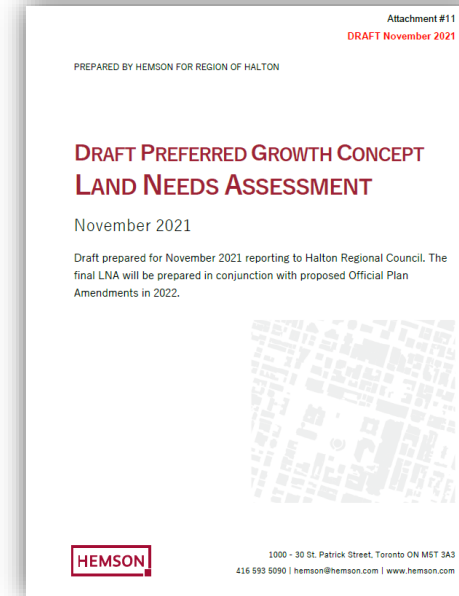
Amendment on Agricultural System, Natural Heritage, Climate Change and other matters



# Halton Region's Draft Preferred Growth Concept and Draft Land Needs Assessment



Draft Preferred Growth Concept  
2031-2051














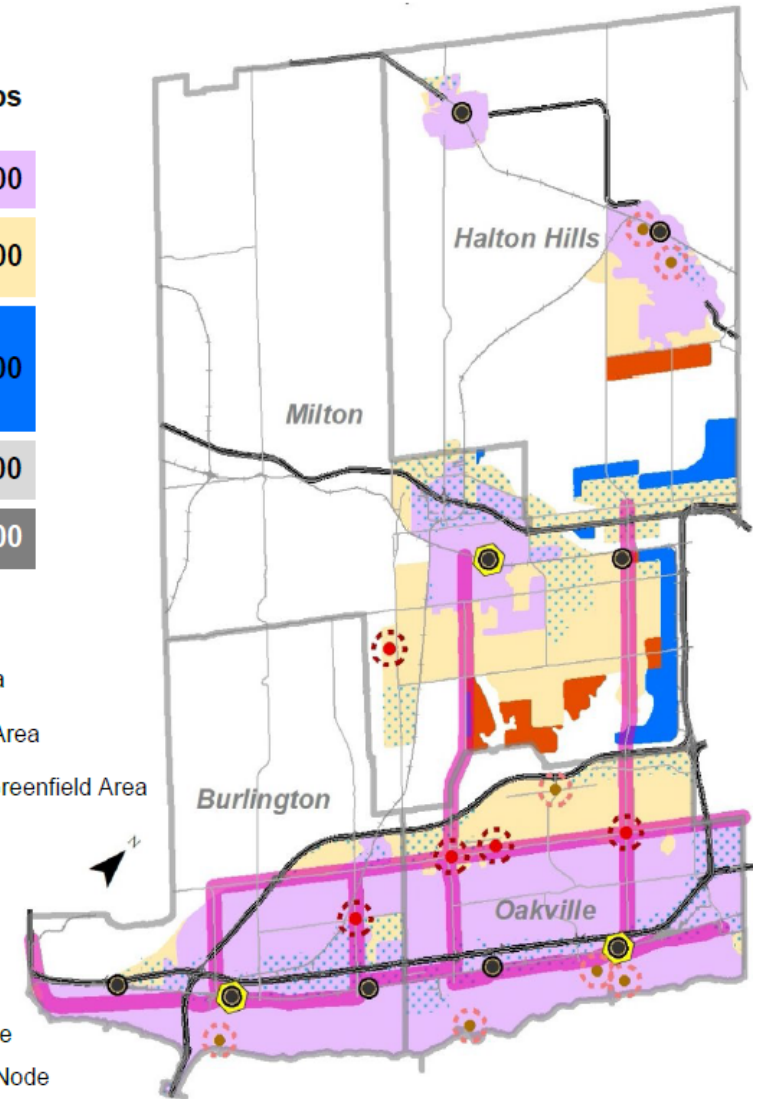
Draft Land Needs Assessment  
2021-2051

# Halton Region Draft Preferred Growth Concept 2031-2051

	Population	Jobs
Built-Up Area	115,000	60,000
Existing Designated Greenfield Area	151,000	61,000
New DGA (Community Area)	62,000	29,000
New DGA (Employment Area)	n/a	
Rural Area (including Hamlets)	4,000	400
<b>Total</b>	<b>332,000</b>	<b>150,000</b>

New Community Area	1,050 ha
New Employment Area	1,070 ha
<b>Total New DGA</b>	<b>2,120 ha</b>

Legend	
	New Community Area
	New Employment Area
	Existing Employment Area
	Existing Designated Greenfield Area
	Built-Up Area
	Municipal Boundary
	Urban Growth Centre
	Major Transit Station
	Primary Regional Node
	Secondary Regional Node
	Regional Corridor



# Draft Land Needs Assessment

## Key Findings for Burlington

### 2021-2051

#### Population Growth



- 70,830 new people
- Annual growth rate of 1.2%
- Accounts for 15% of new growth in Halton

#### Household Growth



- 33,900 new household units
- Average of 1,130 units/year
- Accounts for 19% of new growth in Halton

#### Employment Growth



- 26,500 new jobs
- Annual growth rate of 0.9%
- Accounts for 12% of new growth in Halton

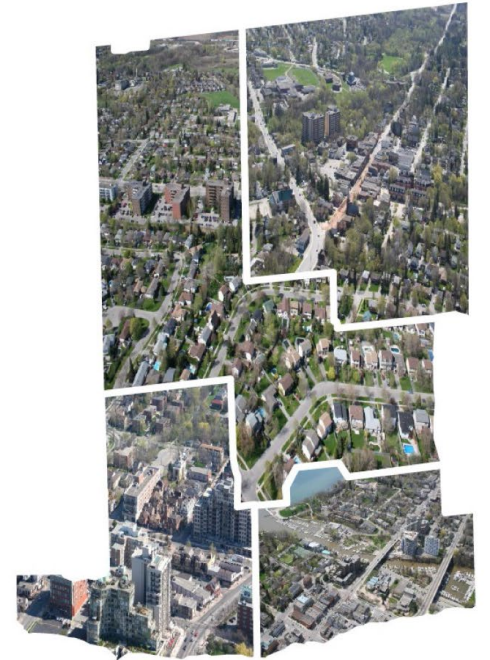


# City of Burlington Comments

## Integrated Growth Management Strategy

Draft Preferred Growth Concept &  
Land Needs Assessment

Regional Council Workshop  
November 17, 2021



Halton.ca 311



1



# Next Steps

- Report Recommendations
- February 9, 2022 Regional Council
  - Preferred Growth Concept
  - Policy Directions Report
  - Draft ROPA 49
- ROPA 49 Statutory Public Meeting and Open House – anticipated March
- ROPA 49 Adoption – anticipated May 2022
- Visit [www.halton.ca](http://www.halton.ca) for more details