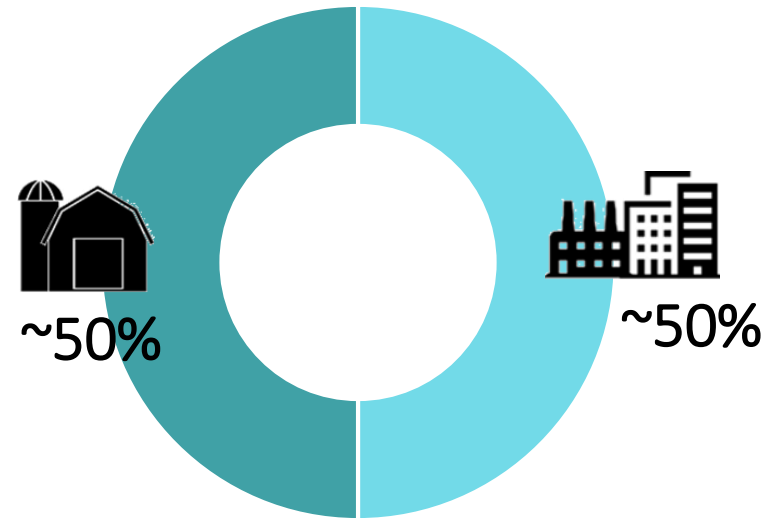
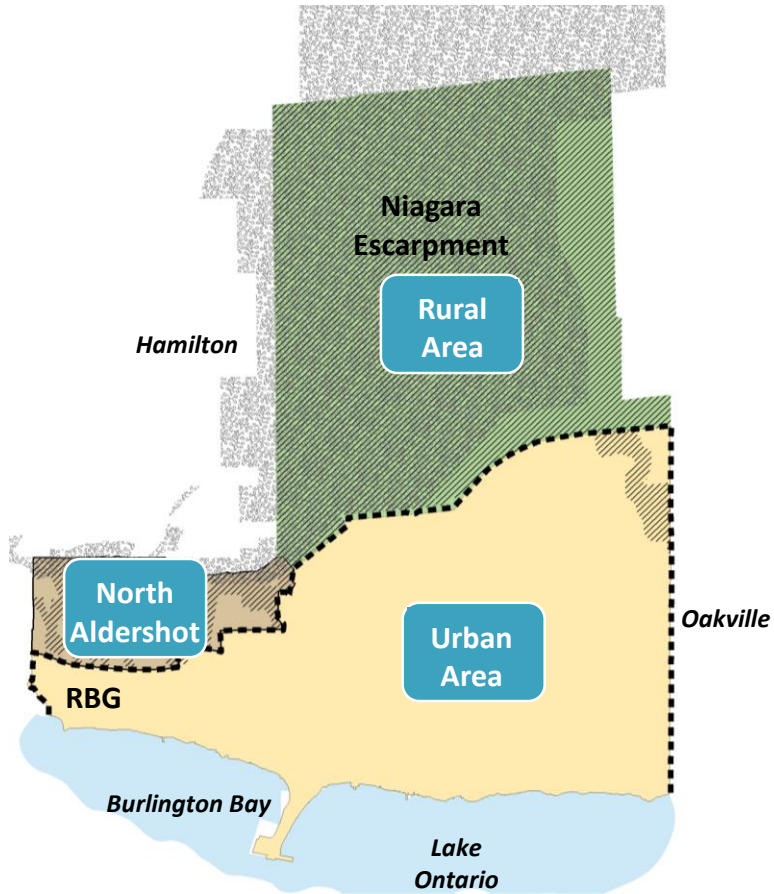
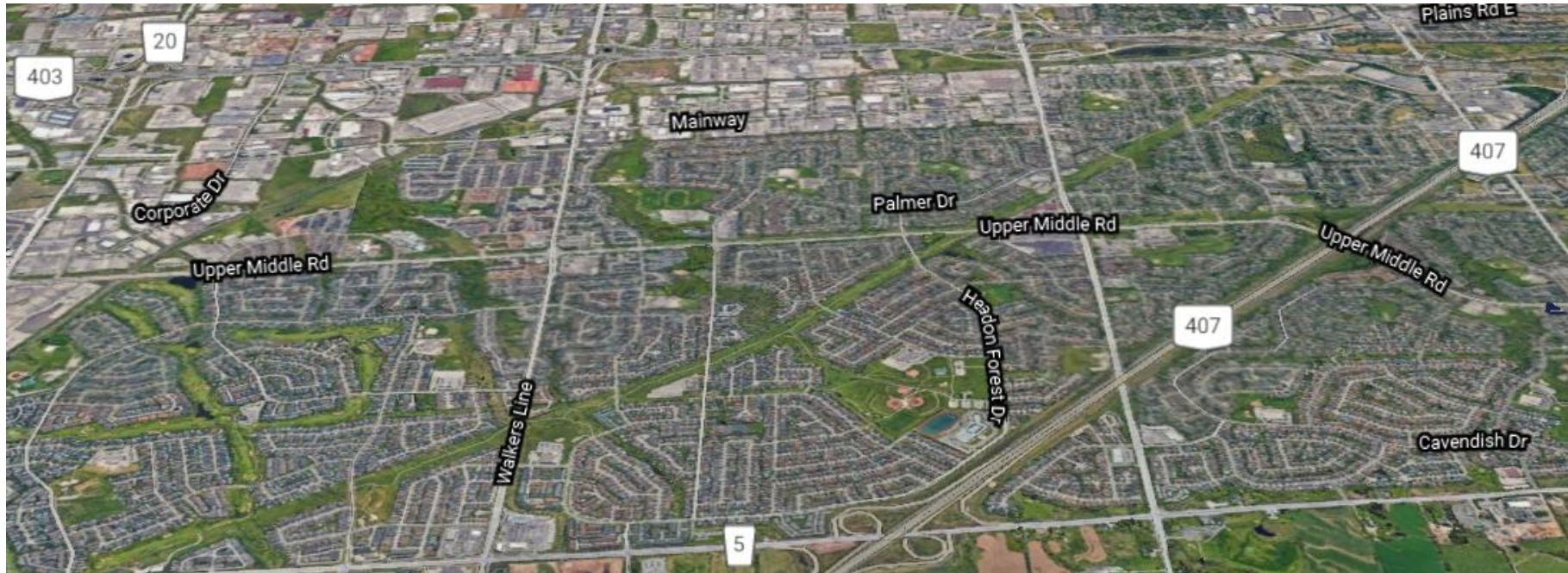




Agriculture “in the City”







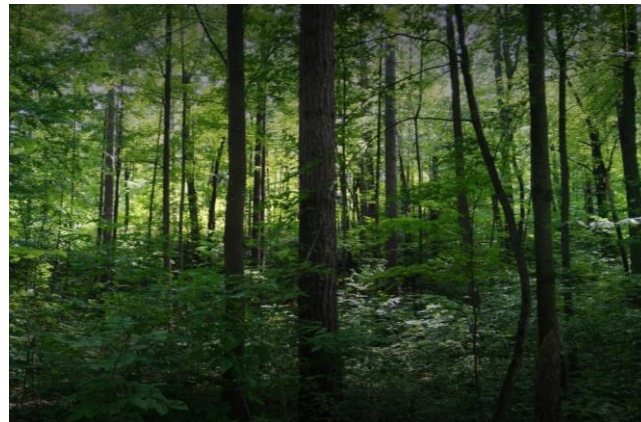
“In the City” ...

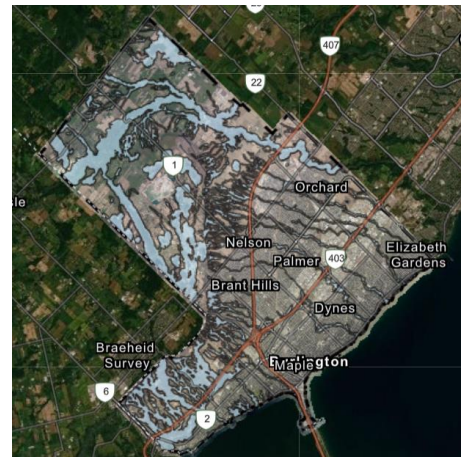




...also “in the City”







Our Requests:

Please don't forget about farmers "in the City" when engaging with the agricultural community. Direct communication with near-urban farmers is critical to understanding their unique needs.

Consider opportunities to actively measure and respond to agricultural system viability on a holistic basis. Invest in restoration and enhancement to build resiliency.



Thank you

