

LaSalle Park Community Marina

RCC-11-22

To: Environment, Infrastructure & Community Services

June 9, 2022

Financial

- How much staff time was expended on the due diligence?
- What is the cost of the staff time, and who is paying for it?
- What projects suffered because the staff was busy with the marina?

The Way Forward

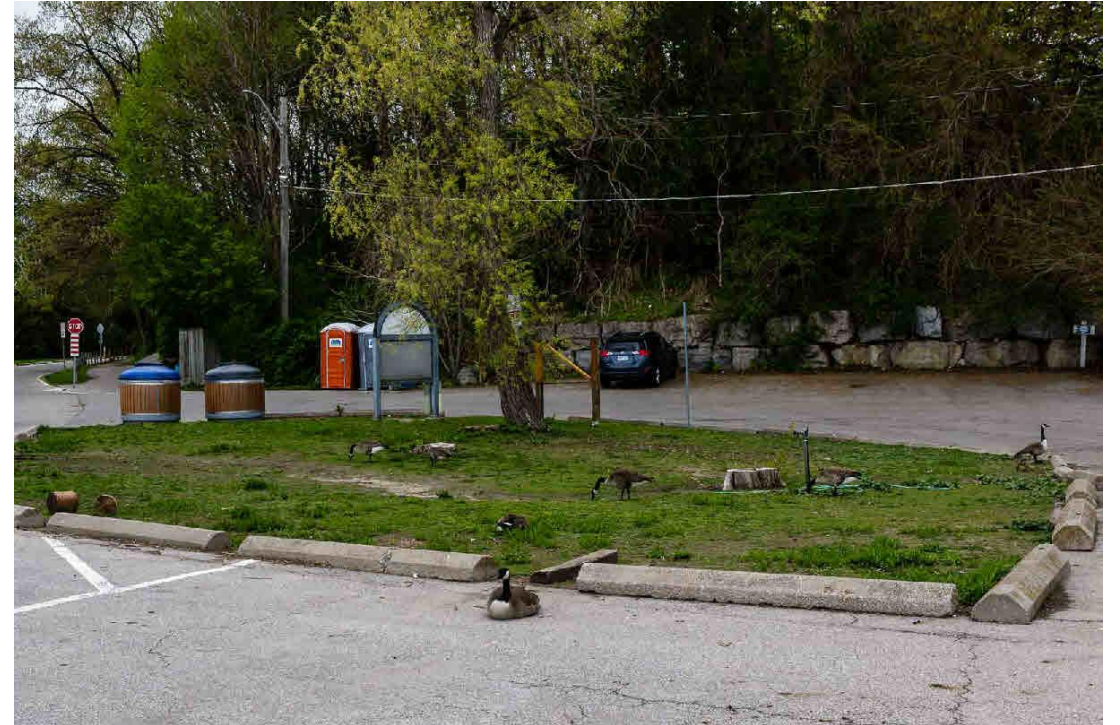
- When does the Marina open?
- Do they have to wait till after the June 21 Council meeting?
- What's happening with the lease on the Park?
- A 40 year lease expires in 6 months.
- Hamilton have been studying it. What has Burlington done?
- Do the boats go back on the docks in September?

Community Marina?

Public Boat Launch?



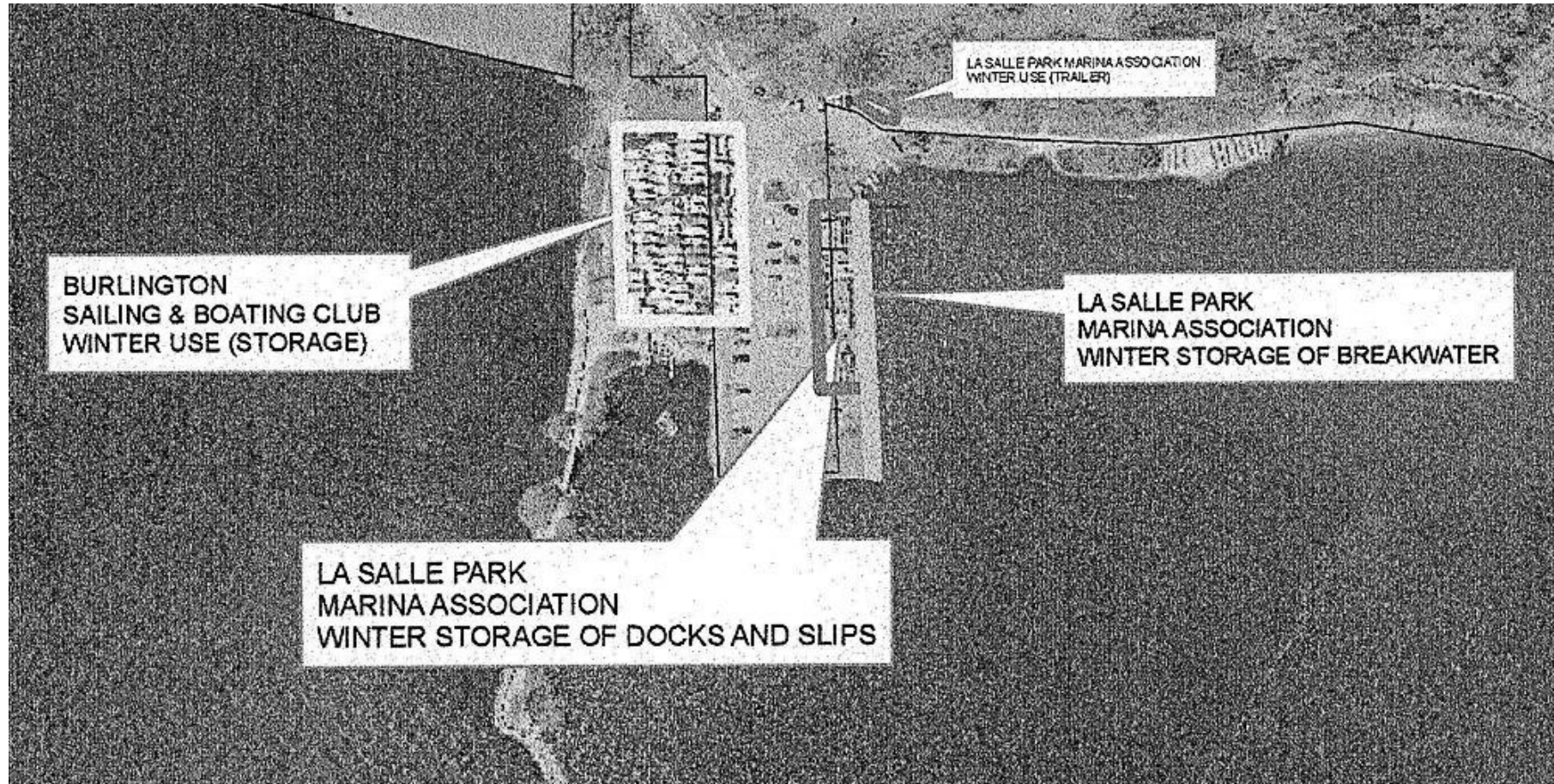
Marina Rebranded



Why is BS&BC Allowed to Store Junk



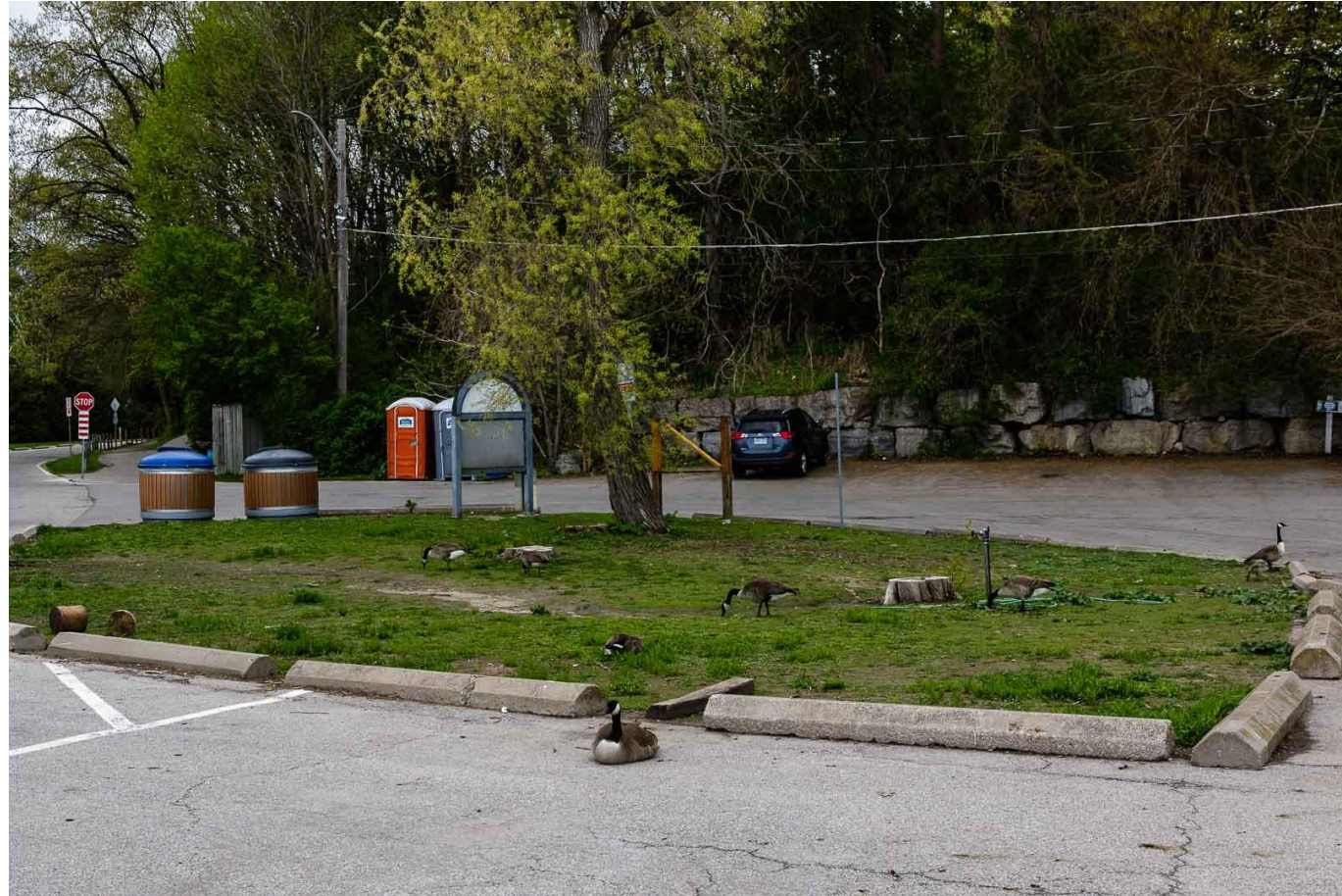
Original JV-2006



Why Has Storage Area Extended Into Green Space



Missing Trees



Bird Friendly?



Addendum to EA Page 4.

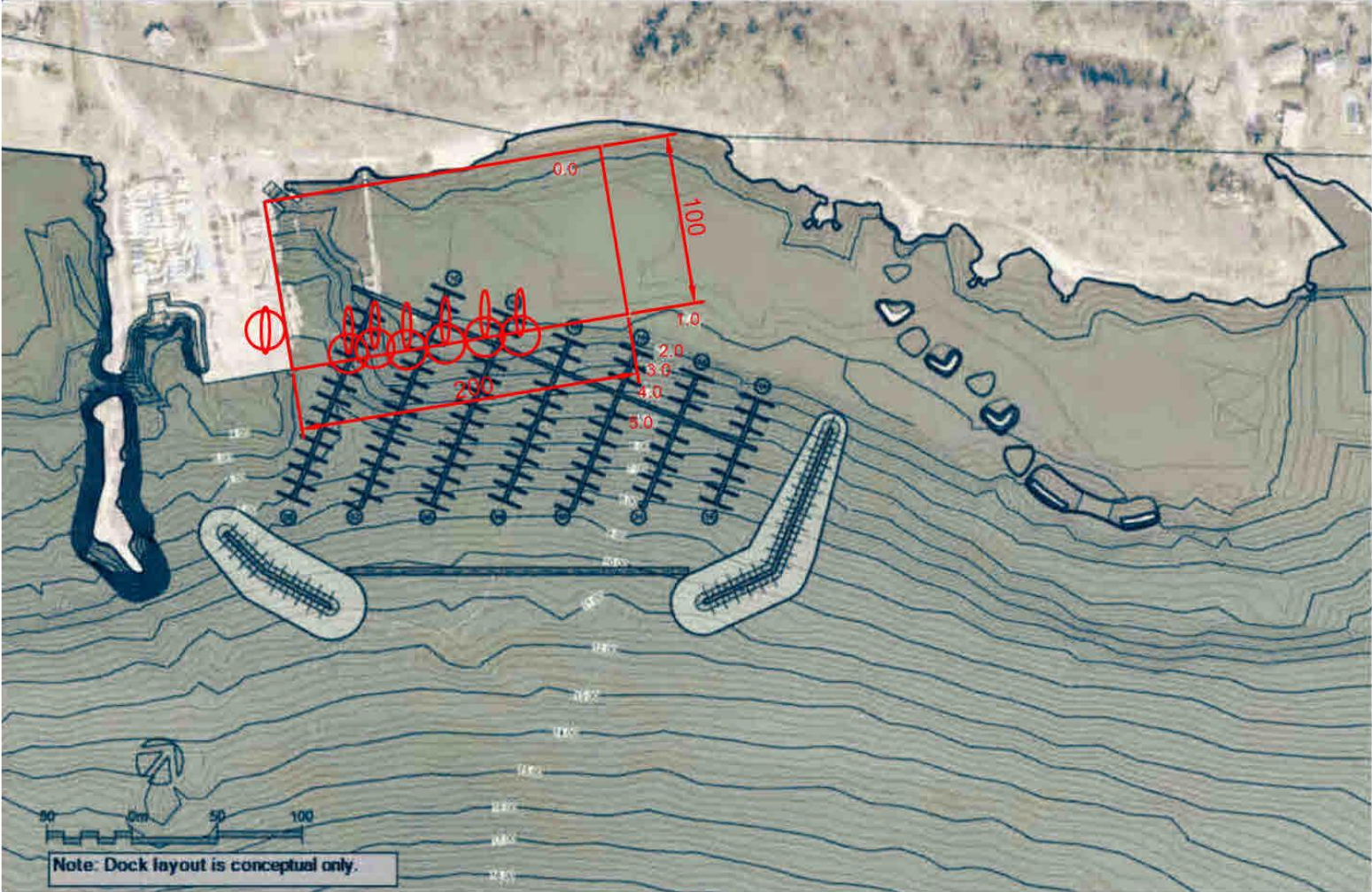
To address any potential impacts on wintering habitat for the trumpeter swans raised by the Trumpeter Swan Coalition the City will undertake as part of this project to:

1. Permit the Trumpeter Swan Coalition to monitor conditions through the winter.
2. Amend the City's by-laws with respect to feeding wildlife to permit licensed persons from the Coalition to feed the swans in the beach area to the east of the marina in extreme winter conditions.
3. Work with the Trumpeter Swan Coalition to improve educational signage on wildlife at the marina.

Climate Implications

- The docks are no longer being removed from the water.
- Is the access from shore and the first row of docks moved so that the 100m takeoff path that was agreed to in the EA is respected?
- LPMA Represe

Take-off Distance?



Potential Effects and Mitigation

POTENTIAL EFFECT	PROPOSED MITIGATION
DURING CONSTRUCTION	
Truck traffic bringing in armour stone and rip rap (approximately 300 trucks over 2.5 months).	<ul style="list-style-type: none"> Trucks will be scheduled during regular business hours to avoid weekend traffic to the park. Traffic control (e.g. flagmen) will be used during the delivery of materials if necessary.
Potential impact of construction noise and dust on neighbours.	<ul style="list-style-type: none"> Construction (including deliveries) will conform to the local noise by-laws. Dust management (e.g. watering of roads) will be put in place if dust becomes an issue.
Potential impact on the boating season	<ul style="list-style-type: none"> Anticipated construction period is from September to December and would likely shorten the extended boating season by one month.
Potential impact on operation of the LaSalle Park Marina.	<ul style="list-style-type: none"> The docks currently stored on the pier over the winter can remain as long as remainder of the area is available for construction.
Limited access to the waterfront and marina during some points in construction process.	<ul style="list-style-type: none"> Construction equipment and materials will be contained in as small an area as possible but it is anticipated that there will be limited public access to the marina/pier during construction. The construction area will be fenced for public safety.
Potential for spills into Burlington Bay.	<ul style="list-style-type: none"> Fueling of construction equipment will be done away from the water.
Potential for sedimentation in Burlington Bay.	<ul style="list-style-type: none"> Core stone material, armour stone and rip rap will be clean. A silt curtain will be used if necessary.
Potential for impact on the planned expansion of the marina.	<ul style="list-style-type: none"> During the required geotechnical investigation, samples will be analyzed to confirm any presence/nature of contamination in sediments. The construction of the wave break will facilitate the development of the expanded marina proposed in Vision 2012. Any expansion of the marina would occur after construction of the wave break. It is anticipated that the City would undertake a public process to discuss a marina expansion prior to implementation.
Potential impact on swans	<ul style="list-style-type: none"> Anticipated construction period from September to December may overlap with wintering swans. Construction activity will be focused on wave break which is greater than 100 m from shore.
Positive impact on fish habitat.	<ul style="list-style-type: none"> No positive gain in fish habitat expected as the footprint impact on existing fish habitat will be mitigated by additional habitat being generated. In-water construction to occur outside of warm water timing windows for spawning.
DURING OPERATION	
Potential for reduced water circulation in the nearshore area fronting LaSalle Park.	<ul style="list-style-type: none"> Reduction in circulation will occur by constructing a wave break that is not shore connected. The low crested section will provide additional circulation.
Increasing potential for ice formation between the wave break and the shore	<ul style="list-style-type: none"> If necessary bubbling systems can be installed in specific areas to reduce ice formation to normal conditions.
Positive reduction in wave impact within the mooring area	<ul style="list-style-type: none"> No mitigation needed
Potential visual impact associated with higher profile of wave break structure.	<ul style="list-style-type: none"> Wave break structure will be perceived as quite visible initially, especially in low water as it is a new structure. This new visual impact will be balanced by the removal of the visual impact associated with the storage of docks stacked on pier.
Potential for navigation or safety issues.	<ul style="list-style-type: none"> Appropriate lighting and signage will be used and will require approval under Navigable Waters Protection Act. Signage will be erected to keep people off wave break.
Potential for impact on swans	<ul style="list-style-type: none"> A take-off/runway path of at least 100 m is provided between the shoreline and docks/wave break.
Potential for unwanted birds (i.e. cormorants)	<ul style="list-style-type: none"> Mechanical/biological controls to be implemented if necessary and in consultation with Environment Canada.
Need for ongoing clean-up and periodic maintenance.	<ul style="list-style-type: none"> LPMA will be responsible for ongoing clean up and maintenance of the wave break.

2021-6-21 Google Earth



Climate Emergency?



Accountability?

TSC wanted something like this.



Can you see what City Staff provided?

