

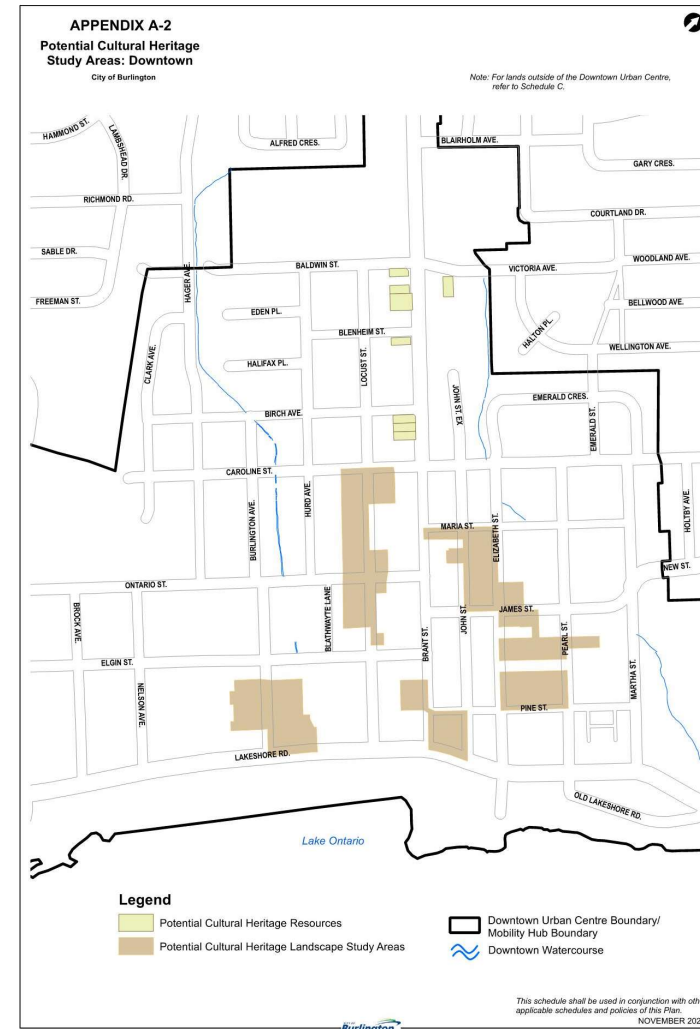
5.8 Proposed Downtown Cultural Heritage Landscapes Study (PL-49-22)

Community Planning Regulation
& Mobility Committee
July 5, 2022

Downtown Cultural Heritage Landscapes Study

Background:

- Eight potential heritage properties and five potential cultural heritage landscapes identified in 2019 Cultural Heritage Resource Assessment for downtown Burlington mobility hub
- In 2020, Council directed staff to report back with an assessment and recommendations
- One additional potential CHL identified by Heritage Burlington



Downtown Cultural Heritage Landscapes Study

POTENTIAL CULTURAL HERITAGE RESOURCES



2012 Victoria Avenue



518 Brant Street



524 Brant Street



530 Brant Street



574 Brant Street



600 Brant Street



612 Brant Street



620 Brant Street

Downtown Cultural Heritage Landscapes Study

POTENTIAL CULTURAL HERITAGE LANDSCAPES



CHL 1- Foot of Brant Commercial Landscape



CHL 2- Locust Street Residential Landscape



CHL 3- Village Square Commercial and Residential Landscape



CHL 4- Downtown East
Residential and Commercial Landscape with Religious
Buildings



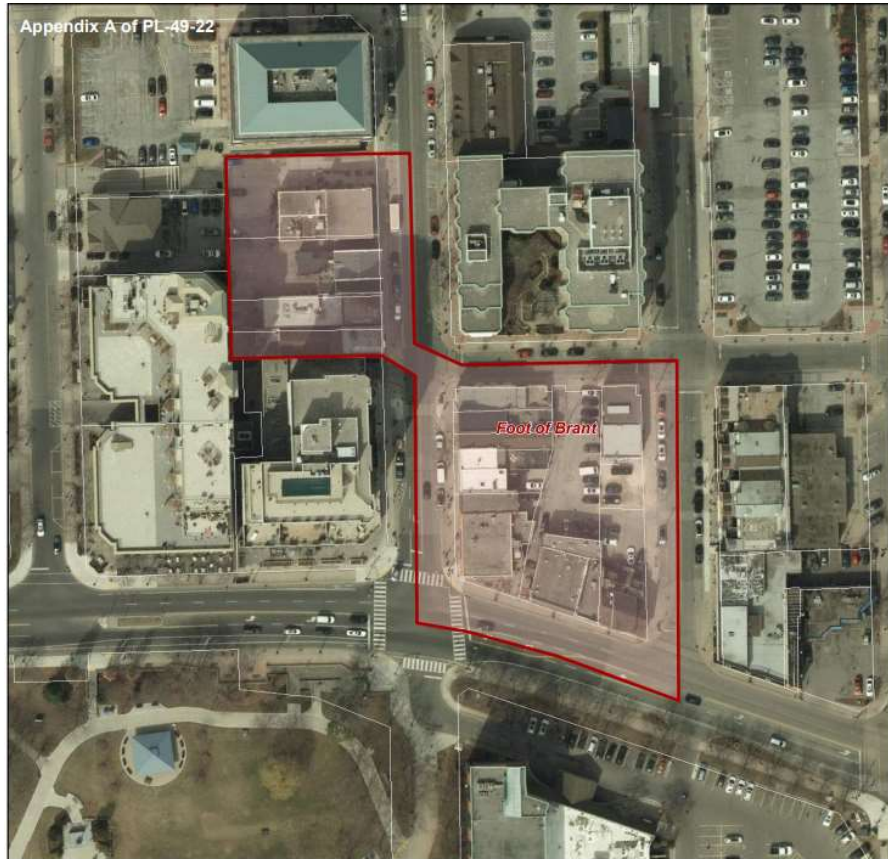
CHL 5- Burlington Avenue and Lakeshore Road
Residential Landscape



CHL 6- St. Luke's Church and Cemetery

Identified by Heritage Burlington
Committee

Downtown Cultural Heritage Landscapes Study



CHL 1- Foot of Brant Street
15 properties total
4 existing heritage properties



Downtown Cultural Heritage Landscapes Study



CHL 2- Locust Street
19 properties total
8 existing heritage properties

Downtown Cultural Heritage Landscapes Study



CHL 3- Village Square
1 property total
4 buildings on heritage register

Downtown Cultural Heritage Landscapes Study



461 Elizabeth Street

CHL 4- Downtown East Residential and Commercial Landscape
14 properties
8 buildings on heritage register

Downtown Cultural Heritage Landscapes Study



CHL 5- Burlington Avenue and Lakeshore Road
13 properties
7 properties on heritage register

Downtown Cultural Heritage Landscapes Study



CHL 6- St. Luke's Church & Cemetery
3 properties
1 property on heritage register

Downtown Cultural Heritage Landscapes Study

Definition of Cultural Heritage Landscape

- An area modified by human activity identified as having cultural heritage value or interest by a community. The area may include features such as buildings, structures, spaces, views, archaeological sites or natural elements that are valued together for their interrelationship, meaning or association....



Example: 3318 Dundas Street, Burlington
St. Paul's Presbyterian Church and Cemetery

Downtown Cultural Heritage Landscapes Study

Deliverables

- Six (6) evaluations of the potential CHLs
- Statements of significance (SOS) for CHLs that qualify for further protection
- Eight (8) evaluations of heritage potential properties
- SOS for properties eligible for Heritage Designation
- A final report
- Recommendations regarding next steps and further protection measures for any CHL or cultural heritage resource that meets the test for designation or formal protection



Downtown Cultural Heritage Landscapes Study

Possible Study Outcomes

- Part IV Designations
- Part V (Heritage Conservation District) Designation
- Recognition in Official Plan (Character Area Designation)
- Area Specific Plan policies



Downtown Cultural Heritage Landscapes Study

Authorize the Director of Community Planning to retain a qualified consultant, through a competitive procurement process, to undertake the Downtown Cultural Heritage Landscapes Study consistent with the Terms of Reference contained in Appendix B of community planning department report PL-49-22...

