



SUBJECT: Improving pedestrian linkages to schools during the winter season – disposition of staff directions SD-27-21 and SD-28-21

TO: Environment, Infrastructure & Community Services Cttee.

FROM: Roads, Parks and Forestry Department

Report Number: RPF-19-22

Wards Affected: Various

File Numbers: 155-03-11

Date to Committee: July 7, 2022

Date to Council: July 12, 2022

Recommendation:

Receive and file roads, parks and forestry department report RPF-19-22 regarding improving pedestrian linkages to schools during the winter season and disposition of related staff directions; and

Authorize the Mayor and City Clerk to execute the winter maintenance agreement with the Halton District School Board for winter maintenance of pathways on school property, with the content satisfactory to the Director of Roads, Parks and Forestry and in a form satisfactory to the Executive Director of Legal Services and Corporation Council; and

Authorize the Mayor and City Clerk to execute the winter maintenance agreement with the Halton Catholic District School Board for winter maintenance of pathways on school property, with the content satisfactory to the Director of Roads, Parks and Forestry and in a form satisfactory to the Executive Director of Legal Services and Corporation Council.

PURPOSE:

This report has been provided to update council on discussions with both school boards and confirm the authorization to proceed with the service agreements established for the seasonal maintenance of various pedestrian linkages to schools during the winter season, as well as to address the outstanding related staff directions.

Vision to Focus Alignment:

- Improve integrated city mobility
 - Deliver customer centric services with a focus on efficiency and technology transformation
-

Background and Discussion:

At the Environment, Infrastructure and Community Services Committee meeting of September 13th, 2021, the following two staff directions were brought forward as an outcome of a winter services update report which was prepared by the Roads, Parks and Forestry Department (RPF-18-21):

- i) Direct the Director of Roads, Parks and Forestry to commence discussions with the Halton District School Board in order to add +/-175m of pathway, connecting Blue Spruce Avenue to the rear of Alexander's Public School, to the list of pathways and trails that are maintained in the winter commencing in the 2021/2022 winter season (SD-27-21); and
- ii) Direct the Director of Roads, Parks and Forestry to commence discussions with the Halton District School Board and the Halton Catholic District School Board in order to add all remaining unmaintained pathways connecting city streets and school properties in support of active transportation and our City of Burlington Integrated Mobility Plan, to the list of pathways and trails that are maintained in the winter commencing in the 2021/2022 winter season and report back during the upcoming budget discussions (SD-28-21).

Strategy/process

Staff met with representatives from both the Halton District School Board and the Halton Catholic District School Board in early October of 2021 to discuss opportunities to improve pedestrian access to schools during the upcoming winter season. The pathway linking Blue Spruce Avenue to the rear of Alexander's Public School was discussed as well as several other pedestrian pathways, currently unmaintained in the winter, which connect to school properties. Staff from the Transportation Services Department were also in attendance to ensure coordination with Burlington's active transportation initiatives including the city's Integrated Mobility Plan.

Both school boards were supportive of the initiative and agreed to collaboratively work with the city to identify pathways which could be incorporated into the city's winter maintenance program. It was also agreed that pathway segments situated on school property would be maintained by the city on a cost recovery basis.

The finalized list of pathways to be maintained is noted below including a future list of pathways which require infrastructure upgrades to be maintained in the winter. Maps of each school location have also been provided in Appendix A. It should be noted that the majority of schools within the city currently have pedestrian access through sidewalks or pathways situated on city property, and are currently maintained in the winter season as part of the city’s winter maintenance program.

School Name	Length (m) on School Property	Length (m) on City Property	Total Length (m)
Pathways to be Maintained in the Winter			
Alexander Public School	28	157	185
Alton Village Public School	186	82	268
Charles R Beaudoin Public School	70	1	71
Dr. Charles Best Public School	135	30	165
Gary Allen High School	79	98	177
John William Boich Public School	110	35	145
Lakeshore Public School	53	4	57
Pauline Johnson Public School	0	17	17
MM Robinson High School	62	138	200
St. Timothy Catholic Elementary School	33	261	294
St. Raphael Catholic Elementary School	0	46	46
Total	756	869	1,625
Future Pathways to be Maintained in the Winter (Subject to infrastructure upgrades)			
Lakeshore Public School	12	0	12
Pauline Johnson Public School	119	6	125
Tom Thomson Public School	27	16	43
Corpus Christi Catholic Secondary School	0	216	216
Total	158	238	396

In order to deliver the most efficient and cost effective service, this additional pathway winter maintenance service will be incorporated as part of the city’s existing winter maintenance program and undertaken in accordance with the same service levels as other city sidewalks/pathways which require plowing after the snow accumulates more than 5 centimeters, but only after roads are cleared. Pathways will also be treated with

sand or salt when appropriate. Sidewalks and pathways are cleared in priority sequence as per the road class that they are situated within or adjacent to.

The net costs to the city for the additional pathway clearing work is minimal as the city will be recovering costs for work on school property. Therefore, separate service agreements with the Halton District School Board and the Halton Catholic District School Board were expedited for execution in November of 2021, with the intent that this service could be delivered as part of the city's 2021/22 winter maintenance program. Unfortunately, both agreements were not executed until May 2022.

Options Considered

The agreements define the terms of pathway winter maintenance services to be provided by the City and the standards to which the work will be undertaken. To mitigate the liability risks to the City, each agreement contains an indemnity provision, which provides that the Boards shall indemnify, defend, and hold harmless the City against, among other things, any losses or damages arising from the City's performance or non-performance of the winter maintenance services. In addition, each agreement requires the respective Boards to maintain, at their cost, commercial general liability and other insurance coverage with the City named as an additional insured.

Financial Matters:

The Roads, Parks and Forestry winter maintenance operating budget for 2022 is \$5.96M and the amount attributed for Sidewalks, Pathways and Trails is \$1.29M.

The winter maintenance operating budget is based on a rolling 5 year average winter season. The annual budget is also adjusted for inflationary or contract increases as necessary. In addition, the city maintains a Severe Weather Reserve Fund to offset budget shortfalls due to severity of the winter season.

The current winter maintenance service expenditures for the 2022 fiscal year are projected to be in-line with the winter maintenance operating budget. Final variances will be subject to the weather experienced in the latter part of the year.

Total Financial Impact

The city will be recovering costs for the work performed on school property, with total recoveries from both school boards in the circa amount of \$2,300 plus HST per winter season. The city's portion of additional pathway clearing work is in the amount of \$2,700 plus HST and will be accommodated within the existing winter maintenance budget for sidewalks, pathways and trails. These costs are nominal as we have leveraged

economies of scale from the plowing of our entire sidewalk/pathway network which is almost 900 kms in length. In addition, we have limited our indemnity through the agreement terms as to not impact our insurance premiums, which would significantly increase the costs to the school boards for this service.

Source of Funding

The source of funding for winter maintenance is the operating budget and is split over two fiscal periods for the same winter season. The Severe Weather Reserve is relied upon when winter expenditures significantly exceed the allocated annual winter budgets.

Other Resource Impacts

Not Applicable

Climate Implications

Winter response is impacted by a changing climate such as severe weather events, extreme cold cycles and fluctuating freeze and thaw events. Response to any of these situations vary and are dependent on the severity of each weather event. The program is currently dependent on gas and diesel powered equipment, that contribute to the City's corporate greenhouse gas emissions. Through its green fleet replacement strategy, the city will endeavor to reduce its reliance on winter maintenance vehicles which are powered by internal combustion engines.

Engagement Matters:

Public engagement will be incorporated as part of the Integrated Mobility Plan update consultation.

Conclusion:

At the direction of Council, staff have dialogued with both the Halton District School Board and the Halton Catholic District School Board, and negotiated agreements for the seasonal maintenance of various pedestrian linkages to schools which were not previously maintained during the winter. These agreements will facilitate improved pedestrian access to schools during the winter season, in the most efficient and cost-effective manner.

Respectfully submitted,

Enrico Scalera
Director of Roads, Parks and Forestry

Appendices:

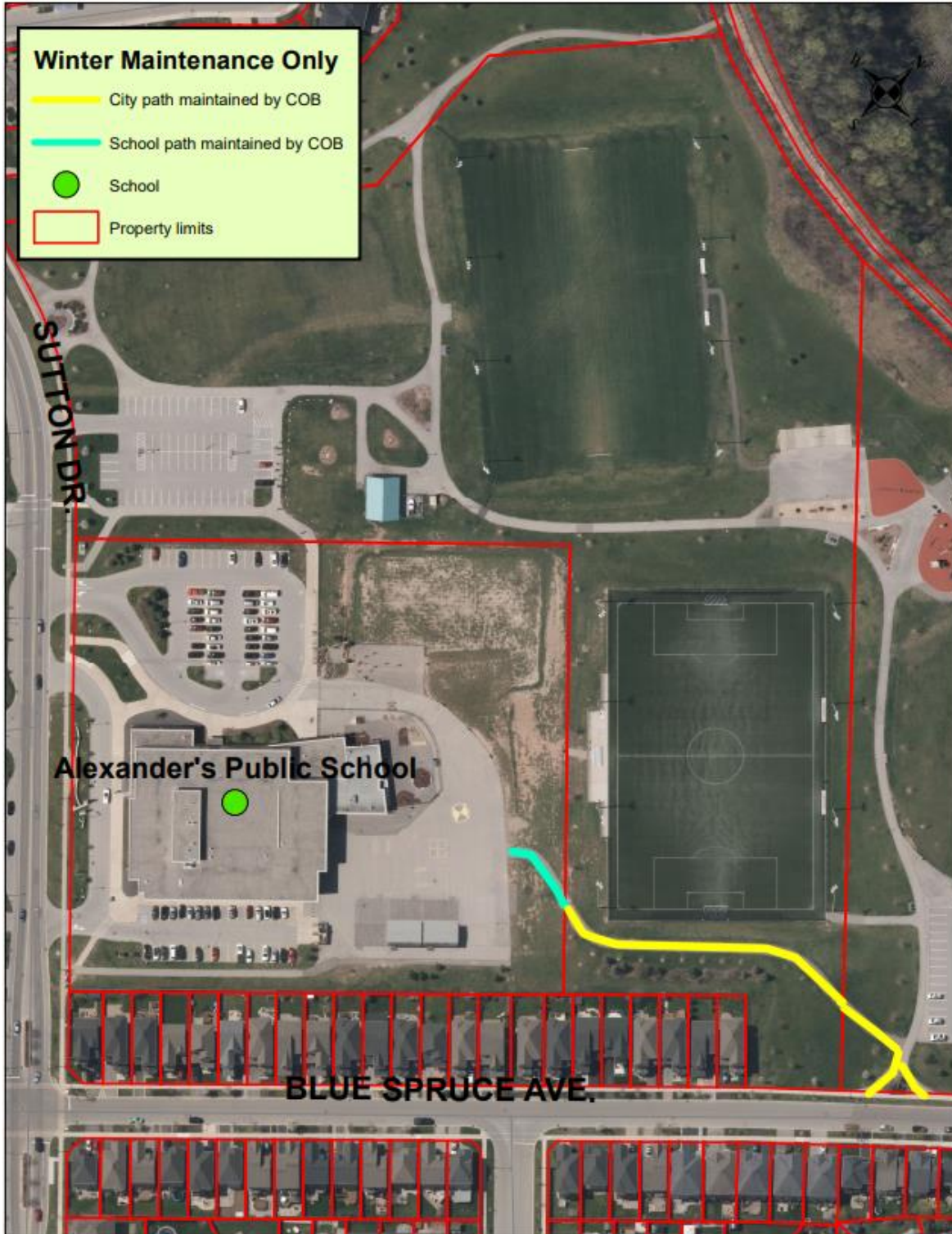
- A. Winter Maintenance Pathways

Report Approval:

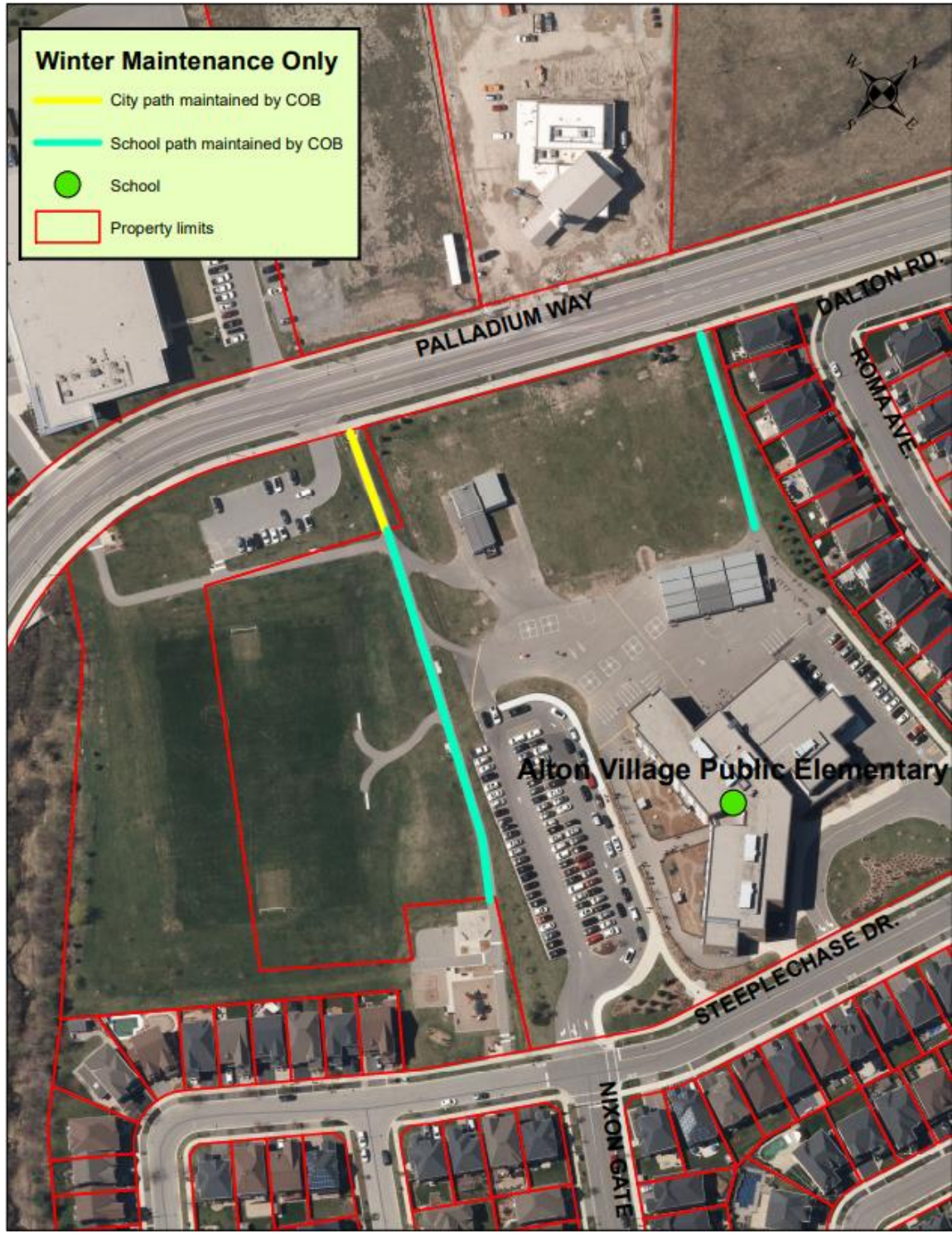
All reports are reviewed and/or approved by Department Director, the Chief Financial Officer and the Executive Director of Legal Services & Corporation Counsel.

APPENDIX A – Winter Maintenance Pathways

Winter Maintenance Pathways – Alexander Public School



Winter Maintenance Pathways – Alton Village Public School



Winter Maintenance Pathways – Charles R Beaudoin Public School



Winter Maintenance Pathways – Dr Charles Best Public School



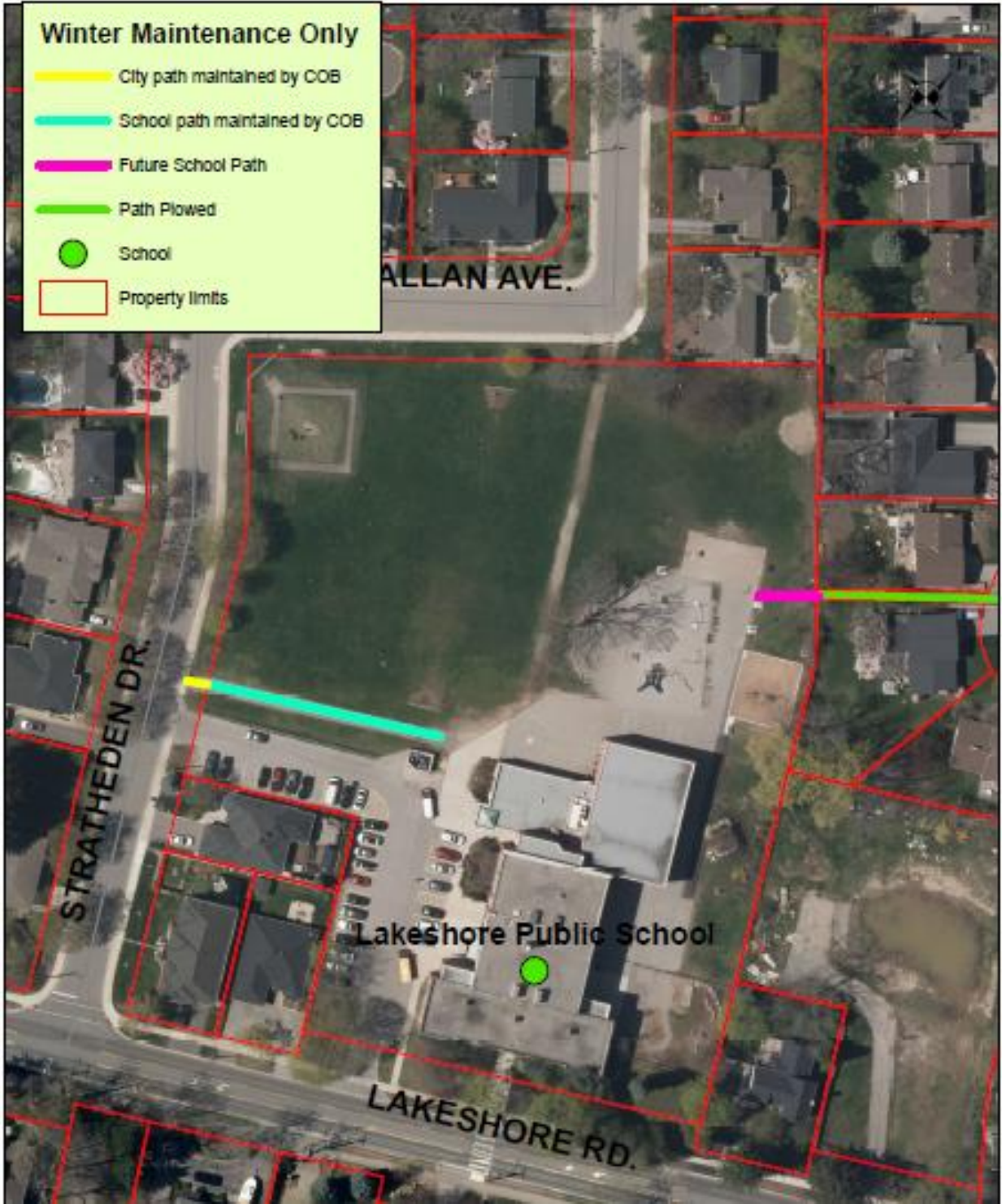
Winter Maintenance Pathways – Gary Allan High School



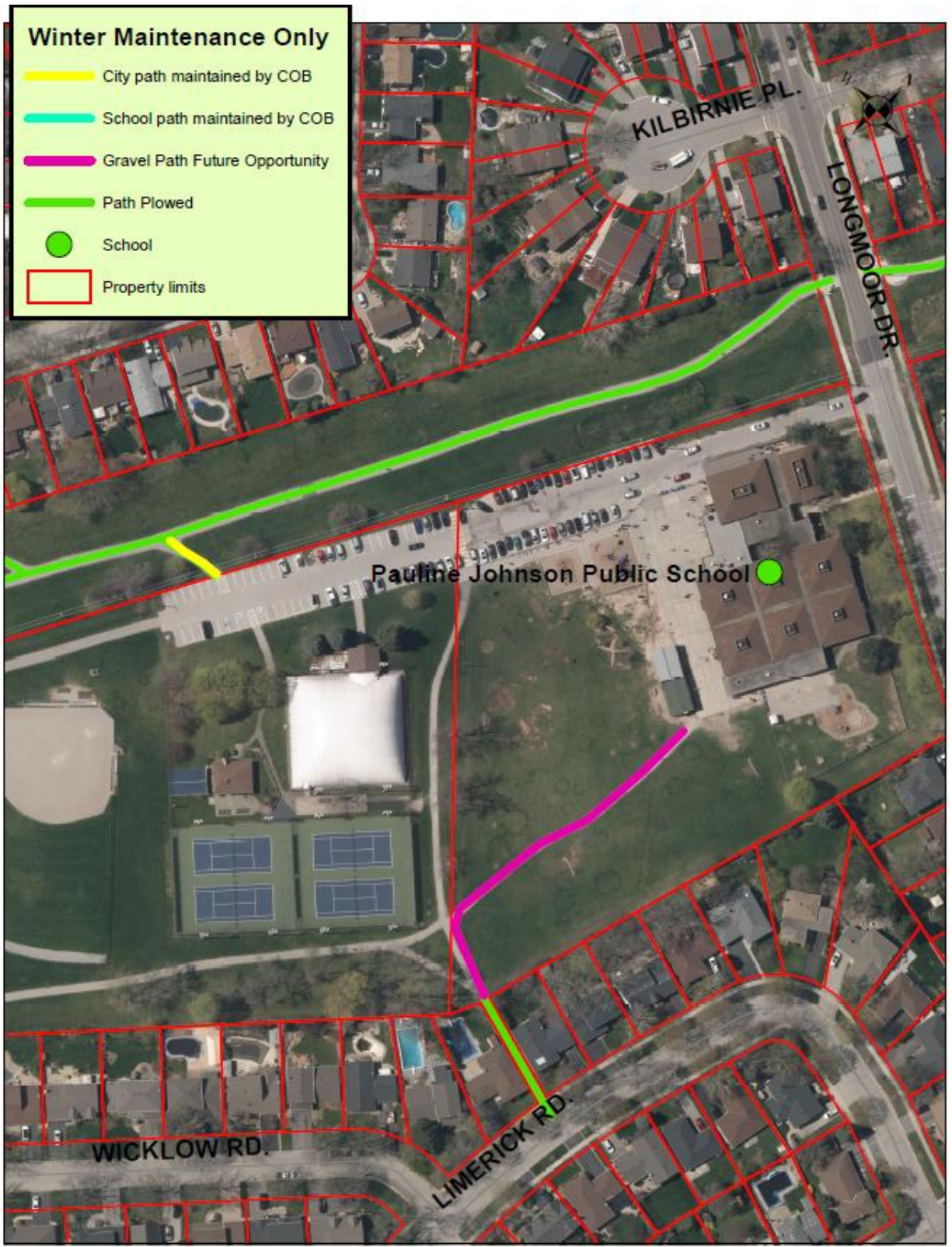
Winter Maintenance Pathways – John William Boich Public School



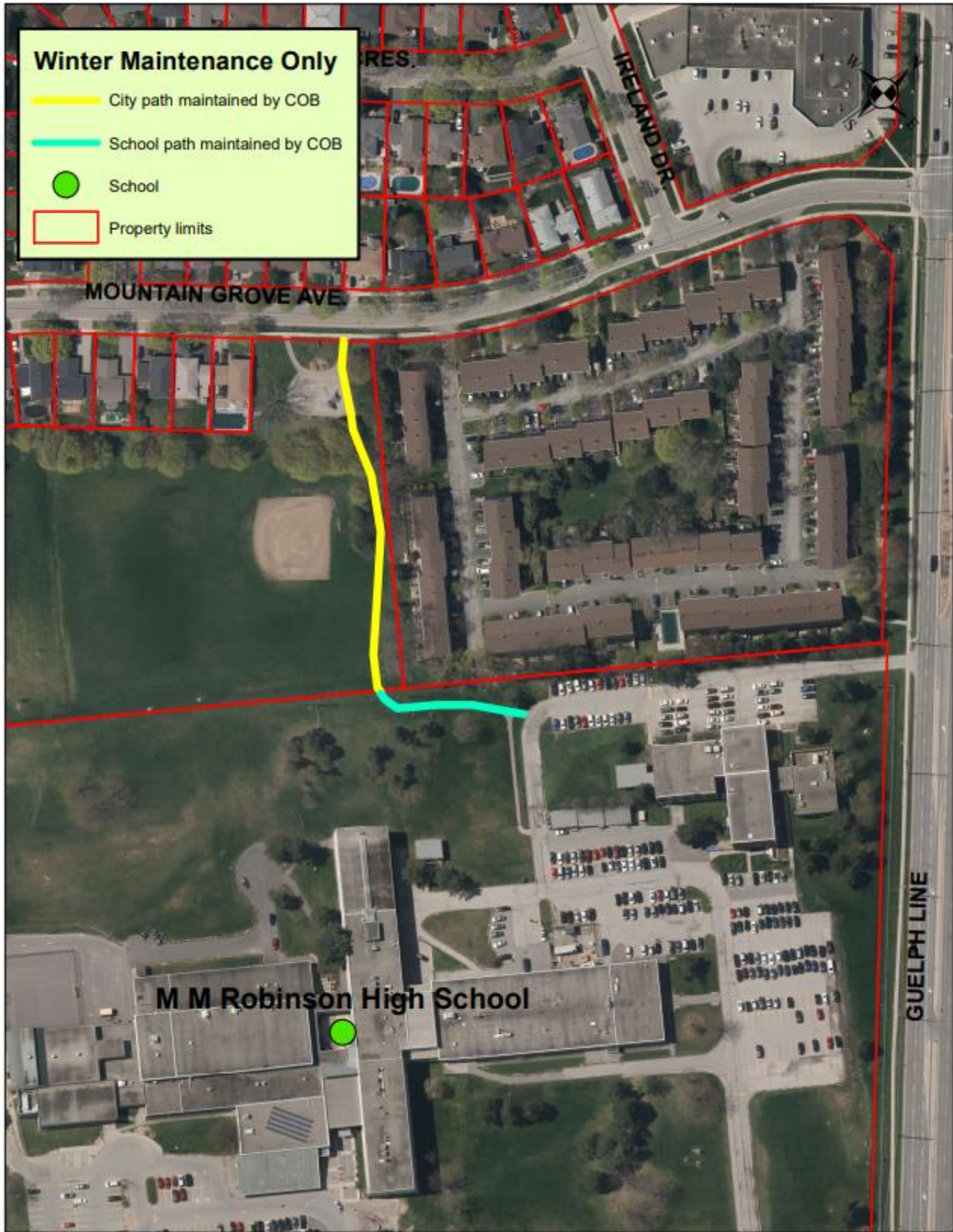
Winter Maintenance Pathways – Lakeshore Public School



Winter Maintenance Pathways – Pauline Johnson Public School



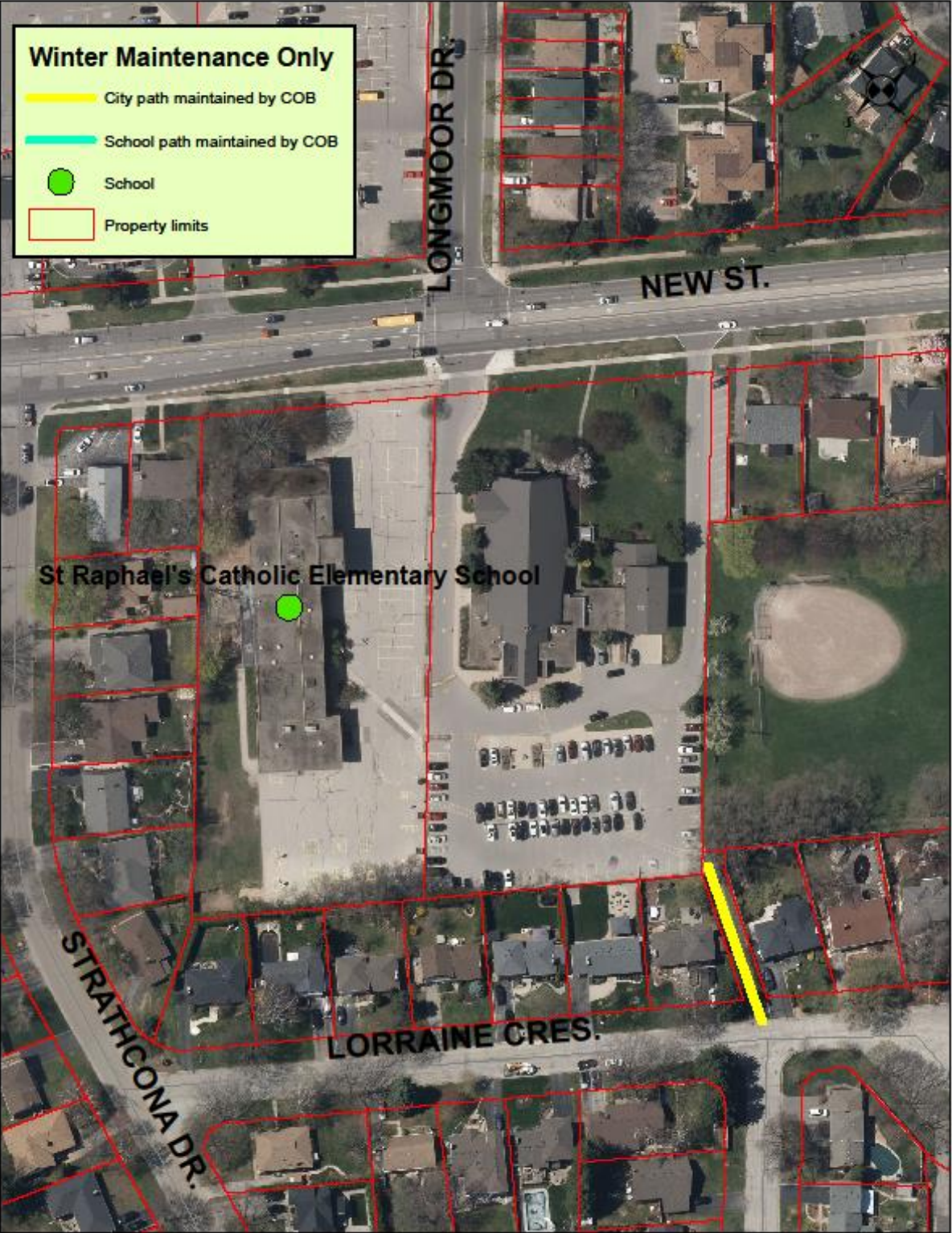
Winter Maintenance Pathways – MM Robinson High School



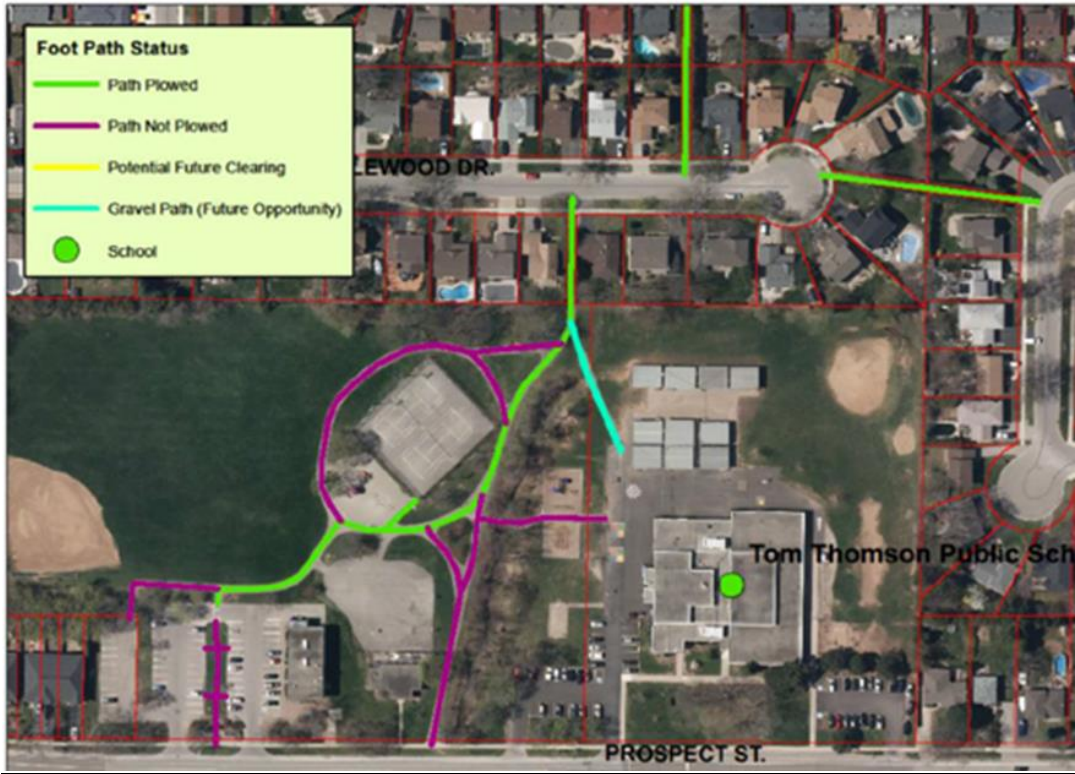
Winter Maintenance Pathways – St. Timothy’s Catholic Elementary School



Winter Maintenance Pathways – St. Raphael's Catholic Elementary School



Winter Maintenance Pathways – Tom Thomson Public School



Winter Maintenance Pathways – Corpus Christi Catholic Secondary School

