

Cultural Heritage Landscape #2- Locust Street

1. 524 Locust Street

Current Photo



Legal Description	PLAN 70 PT LOT 4
Historic Land Use	Residential (Dwelling)
Date of Construction	Pre 1910
Architectural Description	Victorian vernacular 1-storey dwelling with two-over-two windows, segmental arched windows, prominent sills, fieldstone foundation, entrance with sidelights.
Heritage Status	None
Assessment	(✓) Qualifies for Heritage Register

2. 523 Locust Street

Current Photo



Legal Description	PLAN 92 BLK V PT LOT 4
Historic Land Use	Residential (x2 Dwellings)
Date of Construction	N/A
Architectural Description	N/A
Heritage Status	None
Assessment	(X) Not recommended for Heritage Register

3. 520 Locust Street

Current Photo



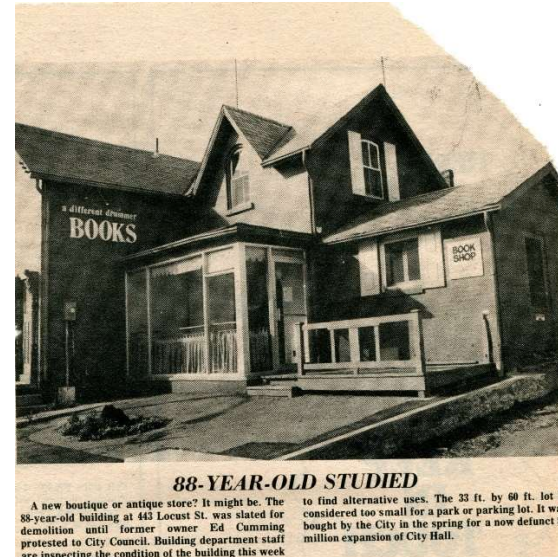
Legal Description	PLAN 70 LOT 3
Historic Land Use	Residential
Date of Construction	Post 1924, relatively new building
Architectural Description	Relatively new two-storey commercial building.
Heritage Status	None
Assessment	(X) Not recommended for Heritage Register

4. 513 Locust Street

Current Photo



Historic Photo



1974 Image of rear of building

Legal Description	PLAN 92 BLK V PT LOT 2LOCUST
Historic Land Use	Residential
Date of Construction	1886
Architectural Description	Two-storey vernacular house with victorian/gothic porch details, a hipped roof, segmental arched ground floor windows, stone foundation. Rear covered porch was restored to a Victorian style porch.
Heritage Status	None
Assessment	(✓) Qualifies for Heritage Register

5. 500 Locust Street

Current Photo



Legal Description	PLAN 70 LOT 1 PLAN 74 PT LOT 50
Historic Land Use	Residential
Date of Construction	N/A
Architectural Description	N/A
Heritage Status	None
Assessment	(X) Not recommended for Heritage Register

6. 492 Locust Street

Current Photo



Historic Photo



1950s image of Locust Street- Vintage Burlington

Legal Description	PLAN 74 PT LOT 50
Historic Land Use	Residential (Dwelling)
Date of Construction	Pre 1910 (north half), 1924-195? (south half)
Architectural Description	Two-storey masonry house converted to commercial building. The north half displays some original features at the ground and second storey, however the portion of the façade beneath the front gable has been altered with a one-storey addition constructed onto the front. The south half is a later addition, using a slightly different colour brick and having different window proportions. The original detailing on the north half of the building includes round and segmental arched windows, fish-scale shingled gable with half round window opening.
Heritage Status	None
Assessment	(X) Further Study Recommended

7. 488 Locust Street

Current Photo



Historic Photo



1950s image of Locust Street- Vintage Burlington

Legal Description	PLAN 74 PT LOT 50
Historic Land Use	Residential (Dwelling)
Date of Construction	N/A
Architectural Description	Two-storey victorian vernacular house with a covered porch, bay window, round arched window in the second-storey gable and two-over-two sash windows.
Heritage Status	None
Assessment	(✓) Qualifies for Heritage Register

8. 1441 Ontario Street

Current Photo



Legal Description	PLAN 74 PT LOT 51
Historic Land Use	Residential (Dwelling)
Date of Construction	1830 (estimated)
Architectural Description	The William Hodgson - Sarah Oakley House. Vernacular loyalist cottage with 1-storey gable roof form and distinctive arched six-over-six sash windows on south and west elevations. The house has a rear 1-storey "kitchen tail". The exterior cladding does not appear original but may be possible to remove. "First constructed on the Brant Street site of the old town hall and library (which was built in 1906) and was moved to this lot in 1874 for William Hodgson. According to Stanley Blair, it was rebuilt by George Blair."- Building Stories
Heritage Status	Heritage Register, Non-designated
Assessment	(✓) Non Designated Heritage Register Property

9. 1445 Ontario Street

Current Photo



Legal Description	PLAN 74 PT LOT 51
Historic Land Use	Residential (Dwelling)
Date of Construction	Between 1910-1924
Architectural Description	1.5-storey vernacular bungalow with covered porch supported with classical (Tuscan) columns. A half bay window on the east side of the front elevation introduces some asymmetry to the facade. Above the porch is a gabled dormer with double-hung one-over-one sash windows.
Heritage Status	None
Assessment	(✓) Qualifies for Heritage Register

10. 1457 Ontario Street

Current Photo



Legal Description	PLAN 92 BLK W PTS 1,2 LOCUST
Historic Land Use	Residential (Dwelling)
Date of Construction	1875
Architectural Description	The Miller Bush House. 2-storey Victorian Vernacular building with masonry exterior, segmental arched windows, west facing hexagonal bay window
Heritage Status	Heritage Designated Property
Assessment	(✓) Heritage Designated

11. 1442 Ontario Street

Current Photo



Legal Description	PLAN 74 PT LOT 52
Historic Land Use	Residential (Dwelling)
Date of Construction	1888
Architectural Description	The James Cushie Bent House. Carpenter gothic style house of wood frame construction, with covered, curved and enclosed glassed-in porch, handmade and carved ornamentation for the windows, mouldings, soffits, gables and cornices. Decorative roof braces.
Heritage Status	Heritage Designated Property
Assessment	(✓) Heritage Designated

12. 472 Locust Street

Current Photo



Historic Photo



1900 Print from Vintage Burlington North Shore Publishing

Legal Description	PLAN 74 PT LOT 52
Historic Land Use	Church
Date of Construction	N/A
Architectural Description	L'Eglise St Philippe Originally Calvary Baptist Church. Church structure with a combination of Gothic Revival and Italianate styles.
Heritage Status	Heritage Register, Non-designated
Assessment	(✓) Non Designated Heritage Register Property

13. 471 Locust Street

Current Photo



Historic Photo



1900 Print from Vintage Burlington North Shore Publishing

Legal Description	PLAN 92 BLK X PT LOT 1 RP 20R7438 PART 5
Historic Land Use	Dwelling
Date of Construction	1900
Architectural Description	The Atkinson - Peart House. Two-and-a-half storey brick structure dating back to 1900.
Heritage Status	Heritage Register, Non-designated
Assessment	(✓) Non Designated Heritage Register Property

14. 468 Locust Street

Current Photo



Legal Description	PLAN 74 LOT 53
Historic Land Use	Dwelling
Date of Construction	1900
Architectural Description	The Robert Kentner House. Two storey brick structure in Gothic Revival style.
Heritage Status	Heritage Register, Non-designated
Assessment	(✓) Non Designated Heritage Register Property

15. 462-464 Locust Street

Current Photo



Legal Description	PLAN 92 PT LOT 54
Historic Land Use	Dwelling
Date of Construction	1896
Architectural Description	The Richard Cole House. Early Victorian brick dwelling with later renovations from 1943.
Heritage Status	Heritage Designated Property
Assessment	(✓) Heritage Designated

16. 458 Locust Street

Current Photo



Legal Description	PLAN 74 PT LOT 54 SAVE AND EXCEPT RP 20R7438 PART10
Historic Land Use	Dwelling
Date of Construction	Pre 1910
Architectural Description	Two-storey Queen Anne revival style house with fish scale shingles in gable and segmental arched window at second storey. Enclosed porch at ground storey is a later addition
Heritage Status	None
Assessment	(✓) Qualifies for Heritage Register

17. 447-449 Locust Street (Separate Properties)

Current Photo



Address	447- PLAN 92 BLK X PT LOT 8 RP 20R12790 PART 2 449- PLAN 92 BLK X PT LOT 8 RP 20R12790 PART 1
Historic Land Use	Semi-detached dwelling
Date of Construction	1867
Architectural Description	Built in 1867 for Norman Hamburg, a labourer, and his wife Sarah, and their family, this is a rare example of an historic semi-detached residence, and one of the few extant pre-Confederation structures in downtown Burlington. It is a “modest, but well constructed house...” “...unspoiled by modern alterations and retains its original windows, doors, wood trim, storm door and the original gallery verandah supported by square columns with decorative relief details”
Heritage Status	Heritage Designated
Assessment	(✓) Heritage Designated