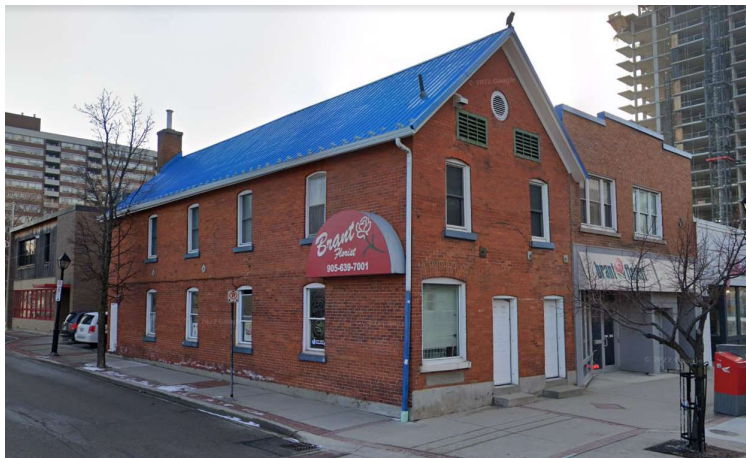


## Cultural Heritage Landscape #4- Downtown East

### 1. 459-463 Brant Street

Current Photo



Historic Photo



1973 Photograph (North Shore Publishing)

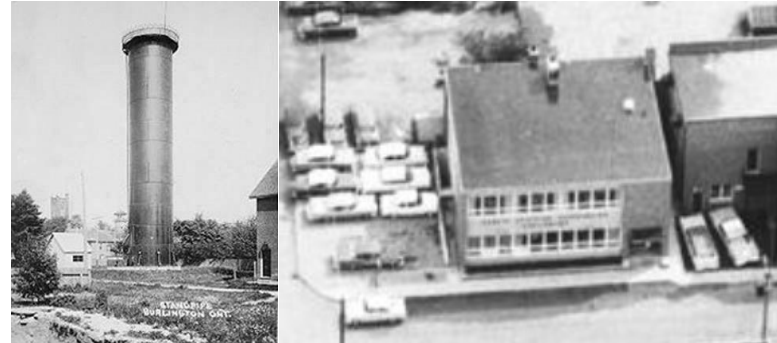
<b>Legal Description</b>	PLAN 92 BLK E PT LOT 1
<b>Historic Land Use</b>	Offices and Masonic Lodge
<b>Date of Construction</b>	Corner portion- Pre 1910, South portion- Post 1924
<b>Architectural Description</b>	Two storey masonry commercial building with gable roof. The building features segmental arched windows at the first and second storey. The south portion of the building facing Brant Street is a much later addition with newer brick and mortar in better condition.
<b>Heritage Status</b>	Heritage Register, Non-designated
<b>Assessment</b>	(✓) Non Designated Heritage Register Property

## 2. 2010 Maria Street

Current Photo



Historic Photo



1924 Photo of  
water tower

1960 Aerial Photo

Legal Description	PLAN 92 BLK E PT LOT 1
Historic Land Use	Water tower (85' tall)
Date of Construction	1950s
Architectural Description	Mid-century modernist style two storey brick building with expansive horizontal windows at ground level. Mixed brick and tile façade. Upper storey windows were altered and reduced in extent.
Heritage Status	None
Assessment	(✓) Qualifies for Heritage Register

### 3. 490 Elizabeth Street / 2042 Maria Street

Current Photo



Historic Photo



Undated Historic Photo of 490 Elizabeth/ 2042 Maria Street from Vintage Burlington

Legal Description	PLAN 92 BLK F PT LOTS 1,2
Historic Land Use	Residential (Dwelling)
Date of Construction	1855
Architectural Description	The Laing - Fisher House Shanston Hall (aka 490 Elizabeth St). Mid-Victorian Neo-Classic solid brick structure with Edwardian rear additions and second and third storey
Heritage Status	Heritage Register, Non-designated
Assessment	(✓) Non Designated Heritage Register Property



## 4. 482 John Street

**Current Photo**



**Historic Photo**



1960 Aerial

<b>Legal Description</b>	PLAN 92 BLK E PT LOTS 2 TO 4
<b>Historic Land Use</b>	Electric Power & Light (the "The Burlington Electric Company")
<b>Date of Construction</b>	1910-1924
<b>Architectural Description</b>	Two storey masonry industrial building with segmental arched windows and brick sills at second storey. The roofline features a dentilated cornice and pediment, however the pediment may be a later addition. The ground floor configuration and storefronts is likely not original. Masonry exterior of the building is largely intact.
<b>Heritage Status</b>	Heritage Register, Non-designated
<b>Assessment</b>	(✓) Non Designated Heritage Register Property

## 5. 482 Elizabeth Street

Current Photo



Historic Photo



1960 Aerial

Legal Description	PLAN 92 BLK F LOT 3 PT LOT 2
Historic Land Use	Residential (dwelling)
Date of Construction	1873
Architectural Description	The Laing - Speers House and former Burlington Public Library. Two-storey three-bay brick structure in Neo-Classical style.
Heritage Status	Heritage Register, Non-designated
Assessment	(✓) Non-Designated Heritage Register Property

## 6. 478 Elizabeth Street

Current Photo



Legal Description	PLAN 92 BLK F LOT 4
Historic Land Use	Residential (dwelling)
Date of Construction	Pre 1910
Architectural Description	Two storey gable roof dwelling with multiple additions and alterations obscuring original character. Second storey window openings in gable may be original.
Heritage Status	None
Assessment	(X) Not recommended for Heritage Register

## 7. 472 Elizabeth Street

Current Photo



Historic Photo



Cropped 1915 Photo of Elizabeth Street looking North towards Caroline

Legal Description	PLAN 92 BLK F LOT 5
Historic Land Use	Residential (dwelling)
Date of Construction	1862(?) (According to Plaque)
Architectural Description	Two storey masonry house with peaked dormer centred over the main entrance. The house is designed in the Gothic vernacular style, popular between 1850 and 1880. Alterations to the house include painted brick, replaced windows, south addition. The ground floor window openings may not be original. In 1915, the house featured a full width covered porch with a sheet metal roof
Heritage Status	None
Assessment	(X) Further Study Recommended



## 8. 468 Elizabeth Street

Current Photo



Historic Photo



1915 Photo of Elizabeth Street looking North towards Caroline

Legal Description	PLAN 92 BLK F PT LOT 6
Historic Land Use	Residential (dwelling)
Date of Construction	Pre 1910
Architectural Description	Two storey vernacular homestead. Two bays wide, with entrance positioned at the side of the ground floor. The full width veranda with craftsman style stone base is original. Two-over-two sash windows feature segmental arches.
Heritage Status	None
Assessment	(✓) Qualifies for Heritage Register



## 9. 464 Elizabeth Street

Current Photo



Legal Description	PLAN 92 BLK F PT LOTS 6,7
Historic Land Use	Residential (dwelling)
Date of Construction	Post 1924
Architectural Description	Plain, two-storey multi-unit building
Heritage Status	None
Assessment	(X) Not recommended for Heritage Register

## 10. 2021 James Street

Current Photo



Legal Description	PLAN 92 BLK F PT LOT 7
Historic Land Use	1924- Empty Lot
Date of Construction	?
Architectural Description	Two storey commercial building with contemporary detailing, constructed after period of interest for CHL 4.
Heritage Status	None
Assessment	(X) Not recommended for Heritage Register

## 11. 458 Elizabeth Street

Current Photo



<b>Legal Description</b>	PLAN 92 BLK F PT LOT 7
<b>Historic Land Use</b>	Residential (dwelling)
<b>Date of Construction</b>	1876
<b>Architectural Description</b>	The John Taylor House. Two-storey gothic vernacular house clad in polychromatic brick. The peaked dormer in the roof features a round arched window. Other windows and entrance feature segmental arches with voussoirs. The front façade is accented with brick corner quoins at the edges.
<b>Heritage Status</b>	Heritage Register, Non-designated
<b>Assessment</b>	(✓) Non Designated Heritage Register Property

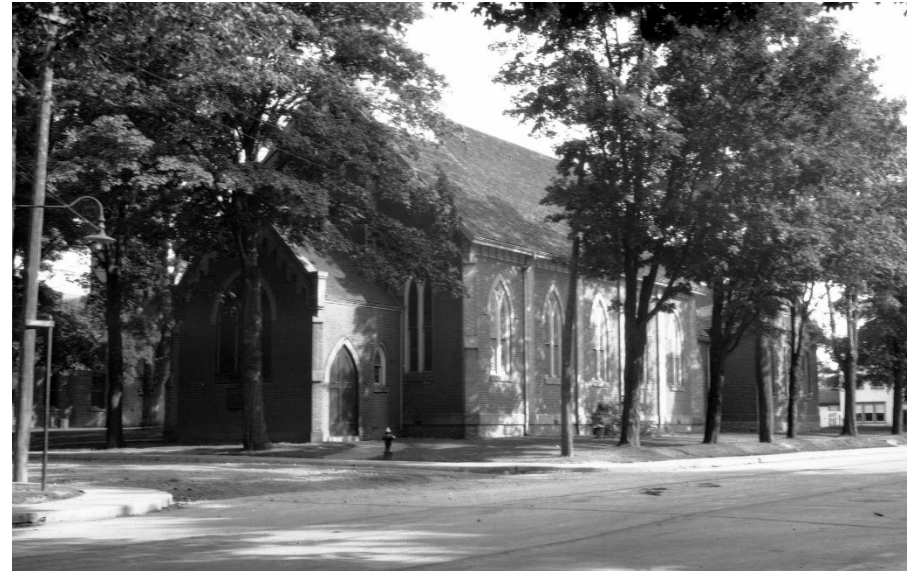


## 12. 461 Elizabeth Street

Current Photo



Historic Photo



Knox Presbyterian Church, Oct 27 1930 The Evening Review. F.H. Leslie

Legal Description	PLAN 92 BLK G PT LOTS 6,7
Historic Land Use	Place of Worship (Church)
Date of Construction	1877
Architectural Description	Knox Presbyterian Church. Gothic revival style church constructed of red and buff brick on land donated to the church in 1845. The main gable and entry gable feature buff corbelled brick and buttresses at the corners. The rich detailing with arched windows and doors and a steeple at the front of the building make this a neighbourhood landmark.
Heritage Status	Heritage Register, Non-designated
Assessment	(✓) Non Designated Heritage Register Property

## 13. 451 Elizabeth Street

Current Photo



<b>Legal Description</b>	PLAN 92 BLK K PT LOT 1
<b>Historic Land Use</b>	Institutional (Sunday School)
<b>Date of Construction</b>	1868
<b>Architectural Description</b>	The Former Methodist Episcopal Church, later the Iron Duke. First Methodist Church in the Village of Burlington. Gothic Revival vernacular brick structure
<b>Heritage Status</b>	Heritage Register, Non-designated
<b>Assessment</b>	(✓) Non Designated Heritage Register Property

## 14. 2046 James Street

**Current Photo**



**Historic Photos**



Crop from 1960 Aerial Photo & 2012 Photo

<b>Legal Description</b>	PLAN 92 BLK K PT LOT 1
<b>Historic Land Use</b>	Residential (dwelling)
<b>Date of Construction</b>	Between 1910-1924
<b>Architectural Description</b>	Basic vernacular homestead with square headed windows and distinctive shed dormers with three-part windows. Full width front verandah with simple square columns. The top of the gable and the sides of the dormers have been re-clad in aluminum or plastic siding.
<b>Heritage Status</b>	None
<b>Assessment</b>	<b>(X) Further Study Recommended</b>



## 15. 2050 James Street

Current Photo



Legal Description	PLAN 92 BLK K PT LOTS 15,16
Historic Land Use	Empty lot
Date of Construction	Unknown, post 1924
Architectural Description	Modern neo traditional, hipped roof office building. Mix of imitation historic building features with no unifying style.
Heritage Status	None
Assessment	(X) Not recommended for Heritage Register

## 16. 441 Elizabeth Street

Current Photo



Legal Description	PLAN 92 BLK K PT LOT 3
Historic Land Use	Empty lot
Date of Construction	Unknown, post 1924
Architectural Description	Basic vernacular homestead with heavily altered façade with minimal distinguishing historic features. Segmental arched window visible on side elevation
Heritage Status	None
Assessment	<b>(X) Further Study Recommended</b>

## 17. 437 Elizabeth Street

Current Photo



Legal Description	PLAN 92 BLK K PT LOT 3
Historic Land Use	Residential (Dwelling)
Date of Construction	Pre 1910 (south portion)
Architectural Description	Basic vernacular homestead with segmental arched windows and projecting sills. The house has been significantly altered with a large addition built onto the north side. The main entrance has been altered and enlarged. All windows replaced.
Heritage Status	None
Assessment	(X) Further Study Recommended



## 18. 436 Pearl Street

Current Photo



Legal Description	PLAN 92 BLK K LOT 14
Historic Land Use	Residential (Dwelling)
Date of Construction	Pre 1910 (Middle gable roof portion)
Architectural Description	Originally a two-storey gable roof house. Extensively altered with ground storey additions. Second storey has been re-clad and no window openings remain
Heritage Status	None
Assessment	(X) Not recommended for Heritage Register

## 19. 435 Pearl Street

Current Photo



<b>Legal Description</b>	PLAN 92 BLK L PT LOT 3
<b>Historic Land Use</b>	Residential (Dwelling)
<b>Date of Construction</b>	Mid-late 1800s
<b>Architectural Description</b>	Two-storey gothic vernacular house with gingerbread trim accenting a peaked dormer in the roof. The dormer features a round arched window centred over the main entry. Front oriel windows may not be original.
<b>Heritage Status</b>	None
<b>Assessment</b>	(✓) Qualifies for Heritage Register

## 20. 431 Pearl Street

Current Photo



<b>Legal Description</b>	PLAN 92 BLK L PT LOTS 3,4 ,13 AND 14 AND RP 20R12443 PART 1 RP 20R21723 PARTS 1 TO 4, 17 TO 22
<b>Historic Land Use</b>	Residential (Dwelling)
<b>Date of Construction</b>	Pre 1910
<b>Architectural Description</b>	Two-storey vernacular homestead with asymmetrical façade and square headed, one-over-one sash windows.
<b>Heritage Status</b>	None
<b>Assessment</b>	(✓) Qualifies for Heritage Register