

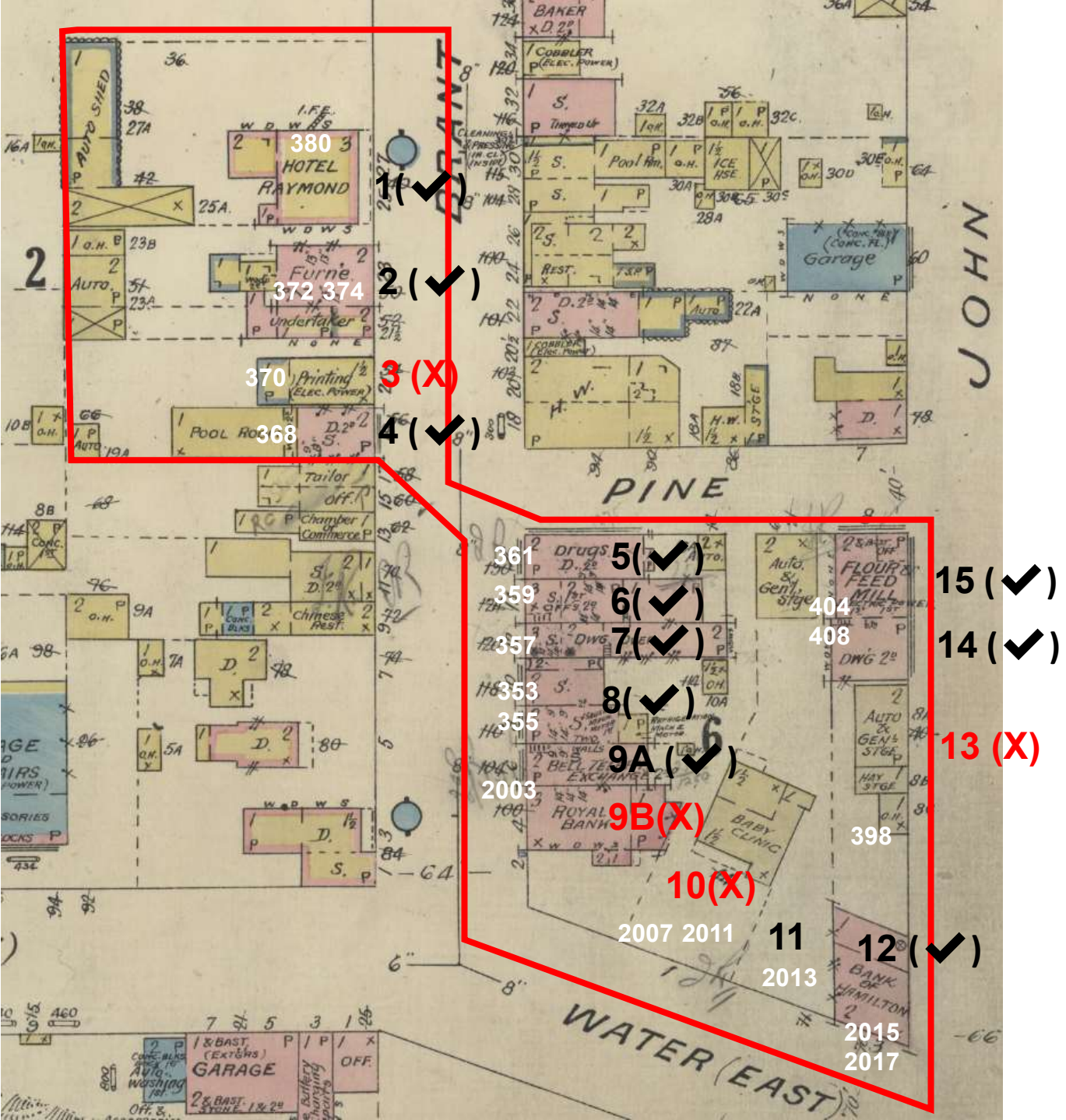
Cultural Heritage Landscape #1- Foot of Brant Street

Buildings pre-dating 1924

2021 Aerial Photo



1924 Fire Insurance Plan



Legend



Non-designated heritage register property



Heritage Designated

(X) -Demolished

(✓) -Still Exists

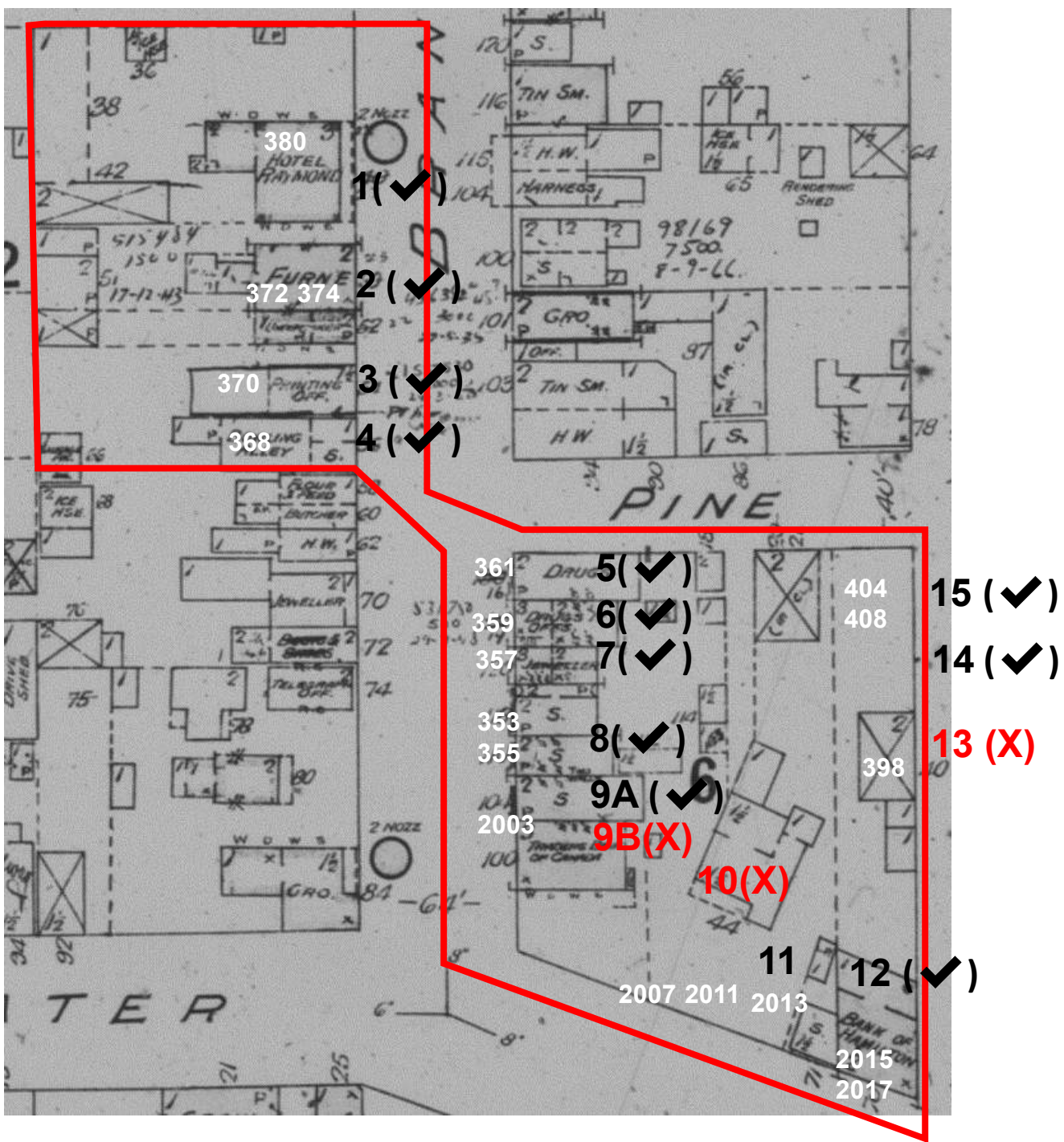
Cultural Heritage Landscape #1- Foot of Brant Street

Buildings pre-dating 1910

2021 Aerial Photo



1910 Fire Insurance Plan



Legend



Non-designated heritage register property



Heritage Designated

(X) -Demolished

(✓) -Still Exists

8. 353-355 Brant Street

Current Photo



Historic Photo (1914)



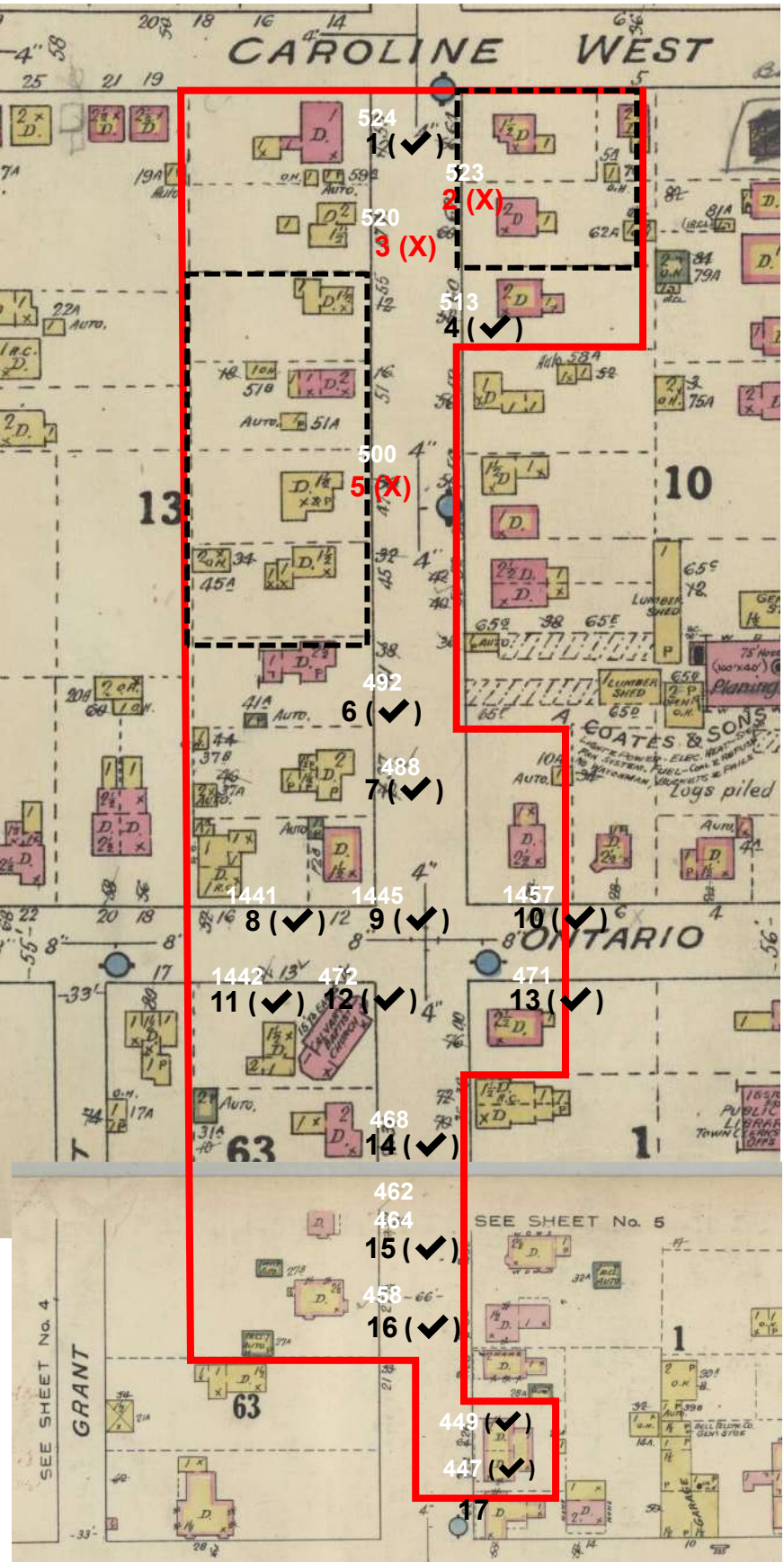
1914 post card of Brant Street looking north from what was then Water Street. From "The Prints of Burlington."

| | |
|-----------------------------------|---|
| Legal Description | PLAN 92 PT BLK M RP 20R8210 PARTS 1,3,4 |
| Historic Land Use | Retail |
| Date of Construction | Pre 1910 |
| Heritage Value or Interest | Two-storey building believed to have historical value for its age and former retail use. The building is believed to have architectural value for its original form, scale and massing and its arrangement of upper storey segmental arched windows with stone or concrete sills. Alterations include aluminum windows, painted stucco covering the original masonry and cornice. Ground floor storefronts have been replaced. Original masonry side walls and structure may be intact. |
| Heritage Status | None |
| Assessment | (✓) Qualifies for Heritage Register |


Cultural Heritage Landscape #2- Locust Street



2021 Aerial Photo



Legend











 Non-designated heritage register property

 Heritage Designated

(X) Demolished

(✓) Still Exists

Fire Insurance Plan Construction Materials Legend

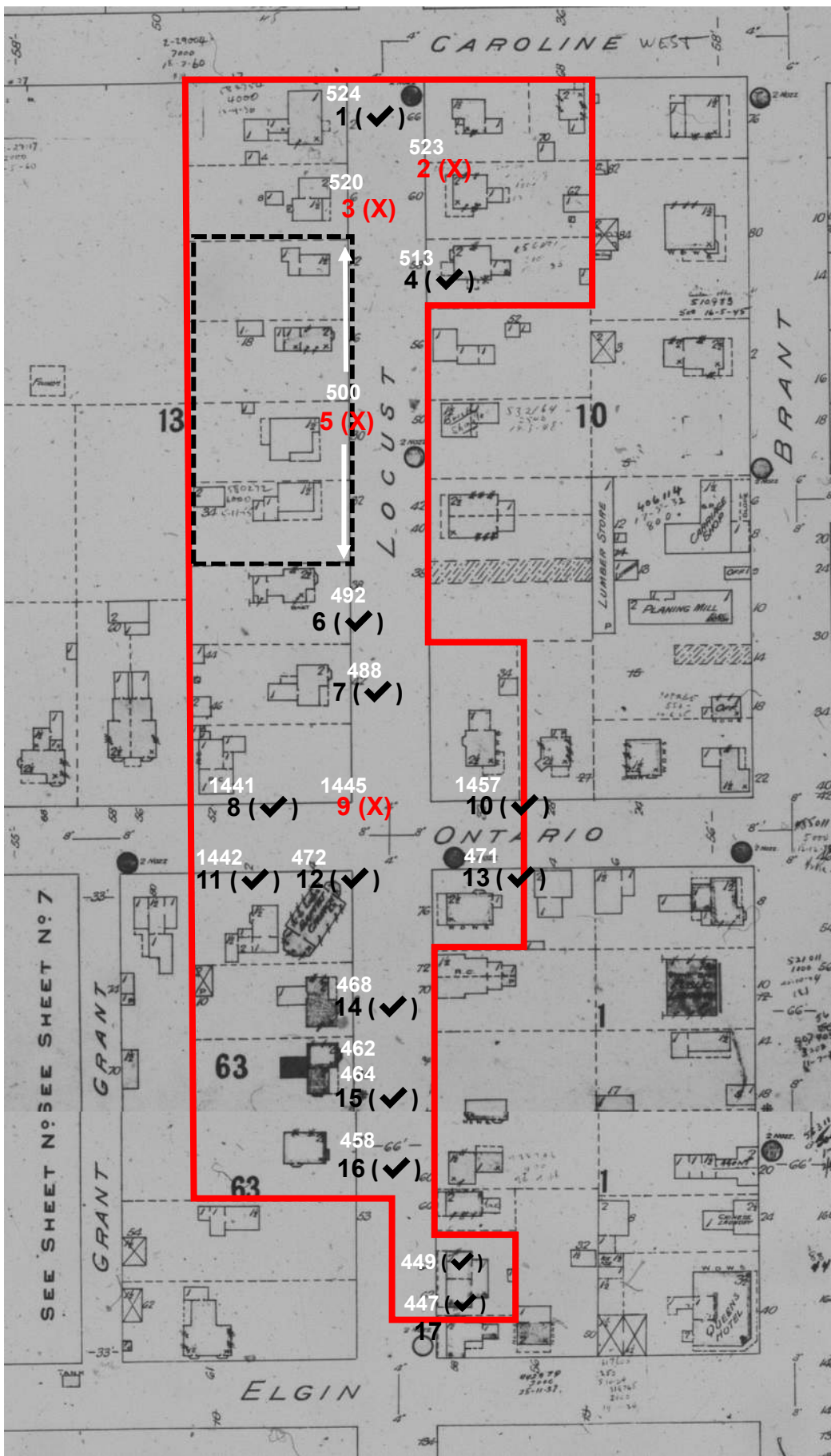
| -CONSTRUCTION- | | | | | -KEY- | |
|---|---|---|---|---|---------|-------|
| FIREPROOF | BRICK | STONE | CONCRETE | STEEL FRAME METAL WALLS | ROOFING | OTHER |
|  |  |  |  |  | | |
|  |  |  |  |  | ROOFING | OTHER |
| CONCRETE BLOCKS | BRICK VENEERED | STONE VENEERED | CONCRETE VENEERED | IRON CLAD | | |
| WOOD | | | | | ROOFING | OTHER |
| D - DWELLINGS OH - OUTHOUSE (SHEDS) | | | | | | |
| ROUGHCAST | | | | | ROOFING | OTHER |
| (N.C.) | | | | | | |
| STABLE (DIAGONAL LINES) | | | | | ROOFING | OTHER |
| GALLERY VERANDAH | | | | | | |
| -ROOFING- | | | | | | |

1924 Fire Insurance Plan

Cultural Heritage Landscape #2- Locust Street



2021
Aerial
Photo



1910 Fire
Insurance
Plan

Legend

 Non-designated heritage register property

 Heritage Designated

(X)

 Demolished

(✓)

 Still Exists

7. 488 Locust Street

Current Photo



Historic Photo



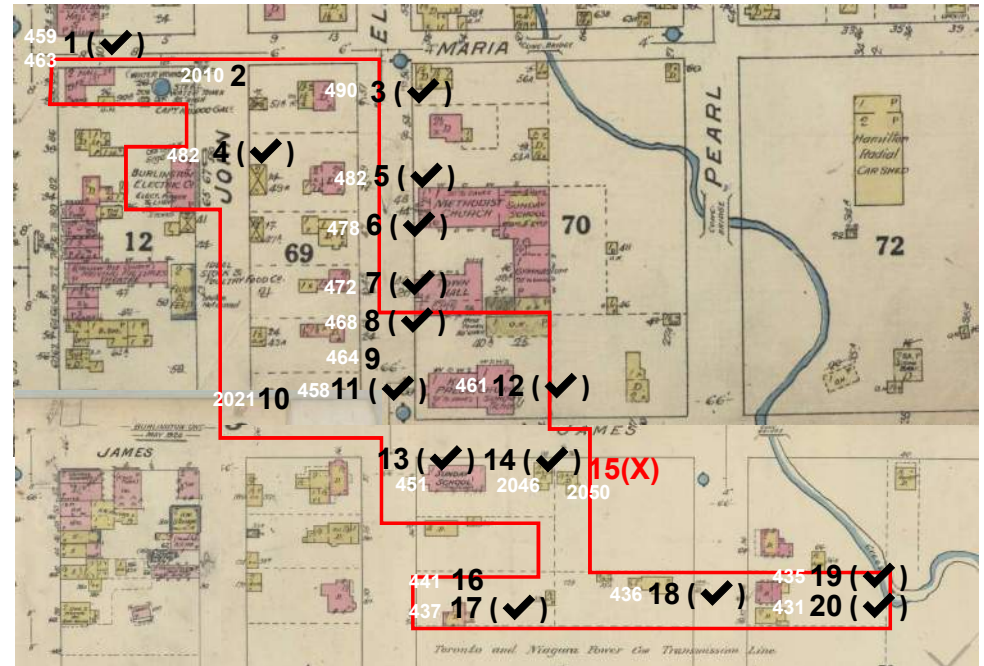
1950s image of Locust Street- Vintage Burlington

| | |
|-----------------------------------|---|
| Legal Description | PLAN 74 PT LOT 50 |
| Historic Land Use | Residential (Dwelling) |
| Date of Construction | Pre 1910 |
| Heritage Value or Interest | This property is believed to have historical value for its significant age and potential to yield information about Burlington's residential neighbourhoods before 1910. It is also believed to have architectural value for its Victorian vernacular features including a covered porch, bay window, round arched window in the second-storey gable and two-over-two sash windows. |
| Heritage Status | None |
| Assessment | (✓) Qualifies for Heritage Register |

Buildings pre-dating 1924



2021 Aerial Photo



1924 Fire Insurance Map

Legend



Non-designated heritage register
property

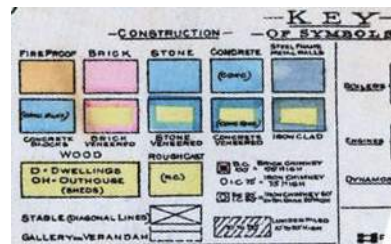


Heritage Designated

(X) Demolished

(✓) Still Exists

Fire Insurance Plan Materials Legend

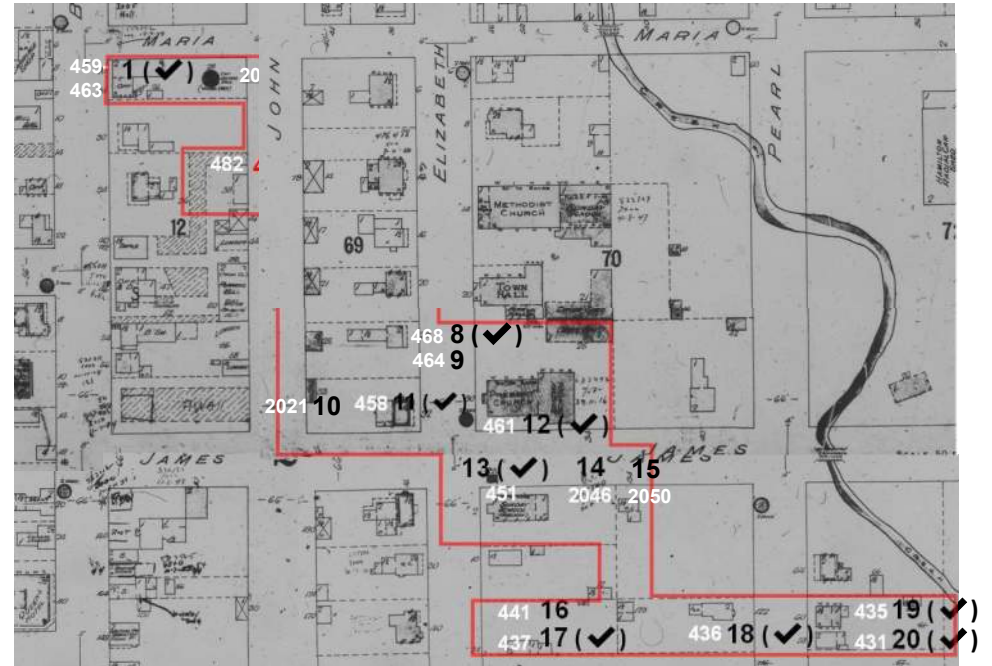


Cultural Heritage Landscape #4- Downtown East

Buildings pre-dating 1910



2021 Aerial Photo



1910 Fire Insurance Map

Legend



Non-designated heritage register property



Heritage Designated



Demolished



Still Exists

2. 2010 Maria Street

Current Photo



Historic Photo



1924 Photo of
water tower



1960 Aerial Photo

| | |
|-----------------------------------|---|
| Legal Description | PLAN 92 BLK E PT LOT 1 |
| Historic Land Use | Water tower (85' tall), former Police station |
| Date of Construction | 1950s |
| Heritage Value or Interest | This two-storey masonry building is believed to have historical value for its former use as a police station. It is believed to have design value for its mid-century modernist details including long horizontal windows at ground level. The façade is a mix of brick and tile. Alterations include a reduction in the width of the upper storey windows. |
| Heritage Status | None |
| Assessment | (✓) Qualifies for Heritage Register |

8. 468 Elizabeth Street

Current Photo



Historic Photo



1915 Photo of Elizabeth Street looking North towards Caroline

| | |
|-----------------------------------|--|
| Legal Description | PLAN 92 BLK F PT LOT 6 |
| Historic Land Use | Residential (dwelling) |
| Date of Construction | Pre 1910 |
| Heritage Value or Interest | This two storey masonry building has historical value for its age and potential to yield information about Burlington residential areas before 1910. It is believed to have design value for its vernacular homestead and craftsman details. The house is two bays wide, with entrance positioned at the side of the ground floor. The full width veranda with craftsman style stone base is original. Two-over-two sash windows feature segmental arches. |
| Heritage Status | None |
| Assessment | (✓) Qualifies for Heritage Register |

16. 441 Elizabeth Street

Current Photo



| | |
|-----------------------------------|--|
| Legal Description | PLAN 92 BLK K PT LOT 3 |
| Historic Land Use | Empty lot |
| Date of Construction | Unknown, post 1924 |
| Heritage Value or Interest | Believed to have some historical and design value. Basic vernacular homestead with heavily altered façade with minimal distinguishing historic features. Segmental arched window visible on side elevation |
| Heritage Status | None |
| Assessment | (✓) Heritage Burlington Advisory Committee recommends for inclusion on Register |

18. 436 Pearl Street

Current Photo



| | |
|-----------------------------------|--|
| Legal Description | PLAN 92 BLK K LOT 14 |
| Historic Land Use | Residential (Dwelling) |
| Date of Construction | Pre 1910 (Middle gable roof portion) |
| Heritage Value or Interest | This building is believed to have some potential historical value due to its local reputation and conversion from a two-storey gable roof house to a popular restaurant. Extensively altered with ground storey additions. Second storey has been re-clad and no window openings remain. |
| Heritage Status | None |
| Assessment | (✓) Heritage Burlington Advisory Committee recommends for inclusion on Register |