

Heritage Planner Update

Heritage Burlington Committee

May 11, 2022

977 UNSWORTH STREET (The “Unsworth House”)



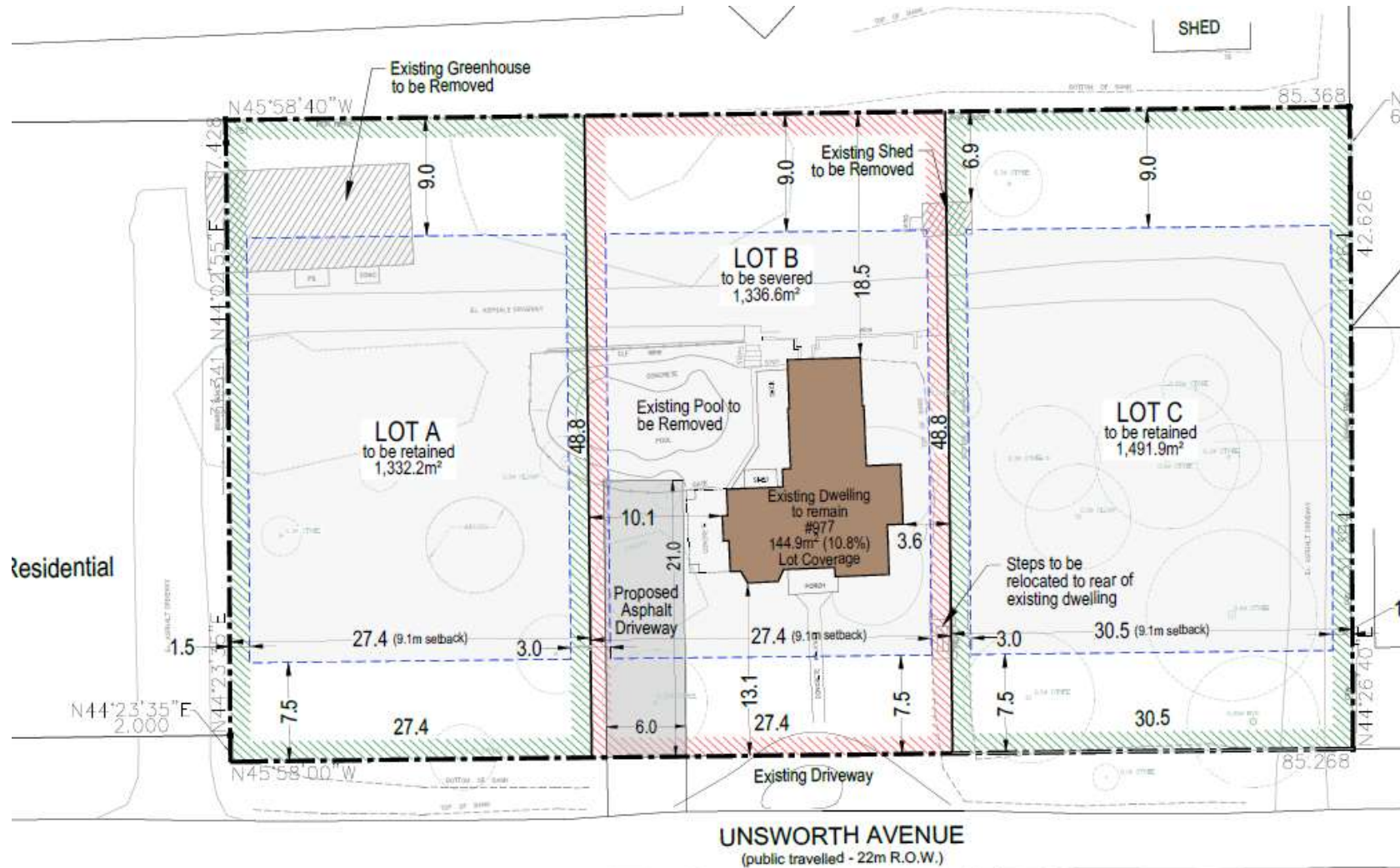
The Heritage Burlington Advisory Committee is asked to review the Review the attached statement of significance for 977 Unsworth Avenue by Megan Hobson, dated October 19, 2022 and make a recommendation to Burlington City Council regarding the eligibility of the property for heritage designation

977 UNSWORTH STREET (The “Unsworth House”)



Location

977 UNSWORTH STREET (The "Unsworth House")

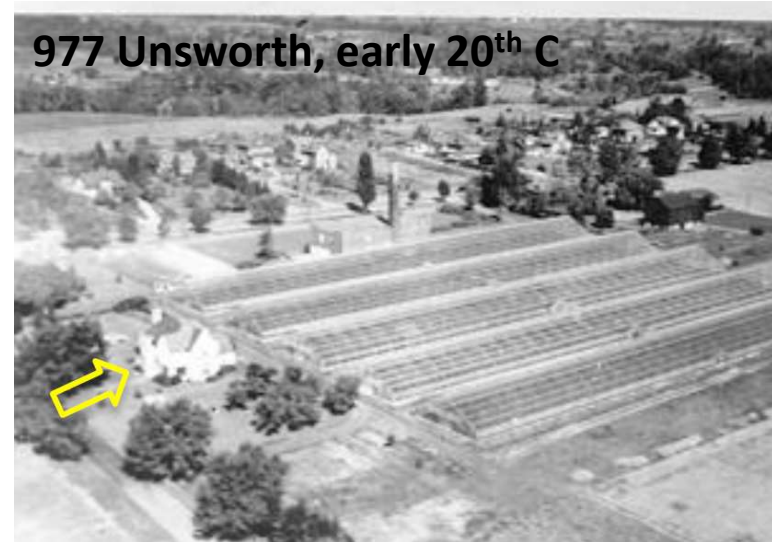


Severance

977 UNSWORTH STREET (The “Unsworth House”)



Title: First cold frames made on the Unsworth farm, Plains Road, from the windows of the Crystal Palace, Hamilton
Date: ca 1897



Hamilton Crystal Palace





Title Unsworth Greenhouses, Aerial View
Date Unknown – post 1995
Type Image
Identifier bpl:208580, Cooke Collection
Format 8x10, Colour
Contributor Louise Cooke
Source: Burlington Historical Society

977 UNSWORTH STREET (The “Unsworth House”)

Heritage Value- Historical/Associative

- Associated with Albert Gorton Unsworth (1906-1986) who was co-owner with his father George Unsworth of Unsworth & Son, one of the earliest commercial greenhouse operations in Ontario.
- Early Pioneer in growing vegetables under glass
- Business went through major expansion in 1920s, including the 2-storey Packing Plant and Boiler House
- By 1940, Unsworth and Son had 120,000 square feet or 3 acres under glass
- Developed a tomato variety called “Happy Day”

George Unsworth

Grower of Hot House Products

Specialties: Lettuce, Cucumbers and Tomatoes



Phone Regent 5644

Aldershot,
Ontario

COMPANY LETTERHEAD – ‘George Unsworth, Grower of Hot House Products. Specialties; Lettuce, Cucumbers and Tomatoes’

FLAMBOROUGH ARCHIVES

977 UNSWORTH STREET (The “Unsworth House”)

Heritage Value- Contextual

- Built in 1932 for Albert Unsworth adjacent to the Unsworth & Son greenhouse complex. Both he and his father lived on the property so they could oversee the greenhouse operation that required constant supervision. The Unsworth houses predate residential development in this area and are located on Unsworth Avenue, a street that is unique in the area because of its central boulevard and row of silver maples planted by George Unsworth in the early 1900s.
- contextually linked to the adjacent George Unsworth House at 336 Plains Road West that was also a component of the Unsworth & Son greenhouse complex



977 UNSWORTH STREET (The “Unsworth House”)



Architectural Value- Good example of the Neo-Tudor style

977 UNSWORTH STREET (The “Unsworth House”)



1932 DATE STONE – INITIALS MAY IDENTIFY THE ARCHITECT & BUILDER?



CAST STONE DETAILS AT FRONT ENTRANCE



CAST STONE SILLS & METAL CASEMENT WINDOWS WITH WOOD FRAMES
WOOD DETAIL ON SIDE PORCH



House design published by Walter Scott that is very similar to his design for the George Unsworth House at 336 Plains Road West. *Plan Book of Canadian Homes*, vol 3 (Maclean's, 1938)

Architectural Details

977 UNSWORTH STREET (The “Unsworth House”)



977 UNSWORTH STREET (The “Unsworth House”)

Options

1. Whereas 977 Unsworth Avenue meets the criteria for determining cultural heritage value or interest under Ontario Regulation 9/06, the Heritage Burlington Advisory Committee recommends that City Council proceed to designate the property under section 29 of the *Ontario Heritage Act*
2. Whereas 977 Unsworth Avenue does not meet the criteria for determining cultural heritage value or interest under Ontario Regulation 9/06, the Heritage Burlington Advisory Committee recommends that City Council decline to proceed with designating the property under section 29 of the *Ontario Heritage Act*