

Renovation and Conversion of Robert Bateman High School



Project Specifics

Existing Building

- Original building was constructed in 1969 and established as Lord Elgin High School
- 200,000 ft² + facility, 2 storeys
- Original building dates back to 1969
- Building additions to North and East (Pool) in 1973
- Building addition to Northwest in 2003
- After merging with General Brock HS in 2004, was renamed to Robert Bateman High School
- Site includes parking lot, running track, football field and green space

Project Scope (Phase 1)

- Wholesale renovation including energy upgrades, and building envelope improvements
- Extensive interior demolition and abatement of asbestos containing materials
- Re-work of main front and rear entrances
- Fit-up of City of Burlington and 4 Tenant spaces including; Brock U, HDSB, TechPlace and Burlington Public Library
- Exterior improvements to parking, landscaping and surface pavements
- Implementation of barrier free elements including UWR's, new elevator, BF path of travel, signage & wayfinding, and site features

Project Specifics.....cont'd

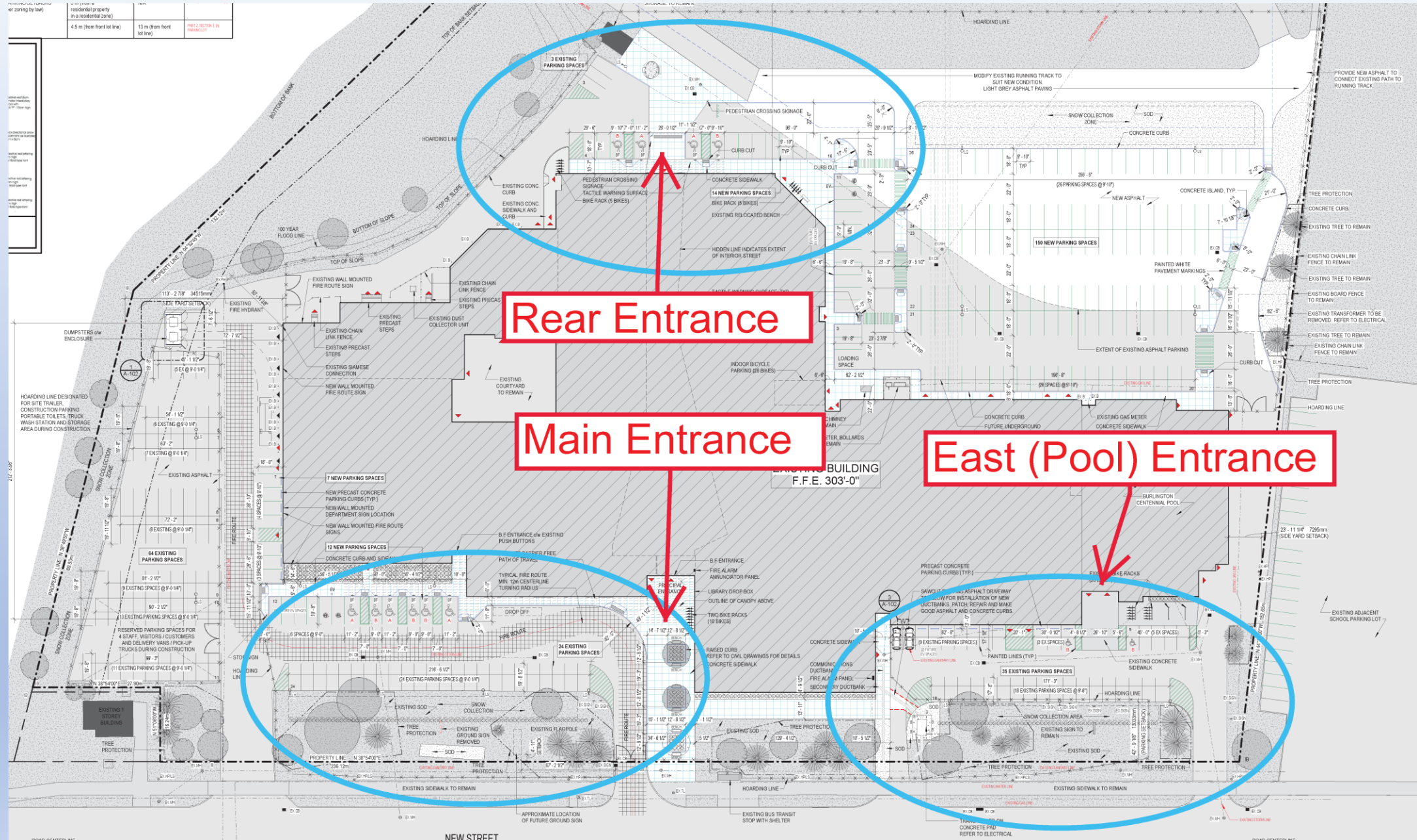
Project Scope (Phase 2)

- Fit-up of all remaining shell spaces not included in phase 1
- Further upgrades/expansion to site parking
- Completion of geothermal field and photovoltaic grids
- Building re-roofing
- Development of green space, public walkways, trails and exterior amenities

Project Timeline

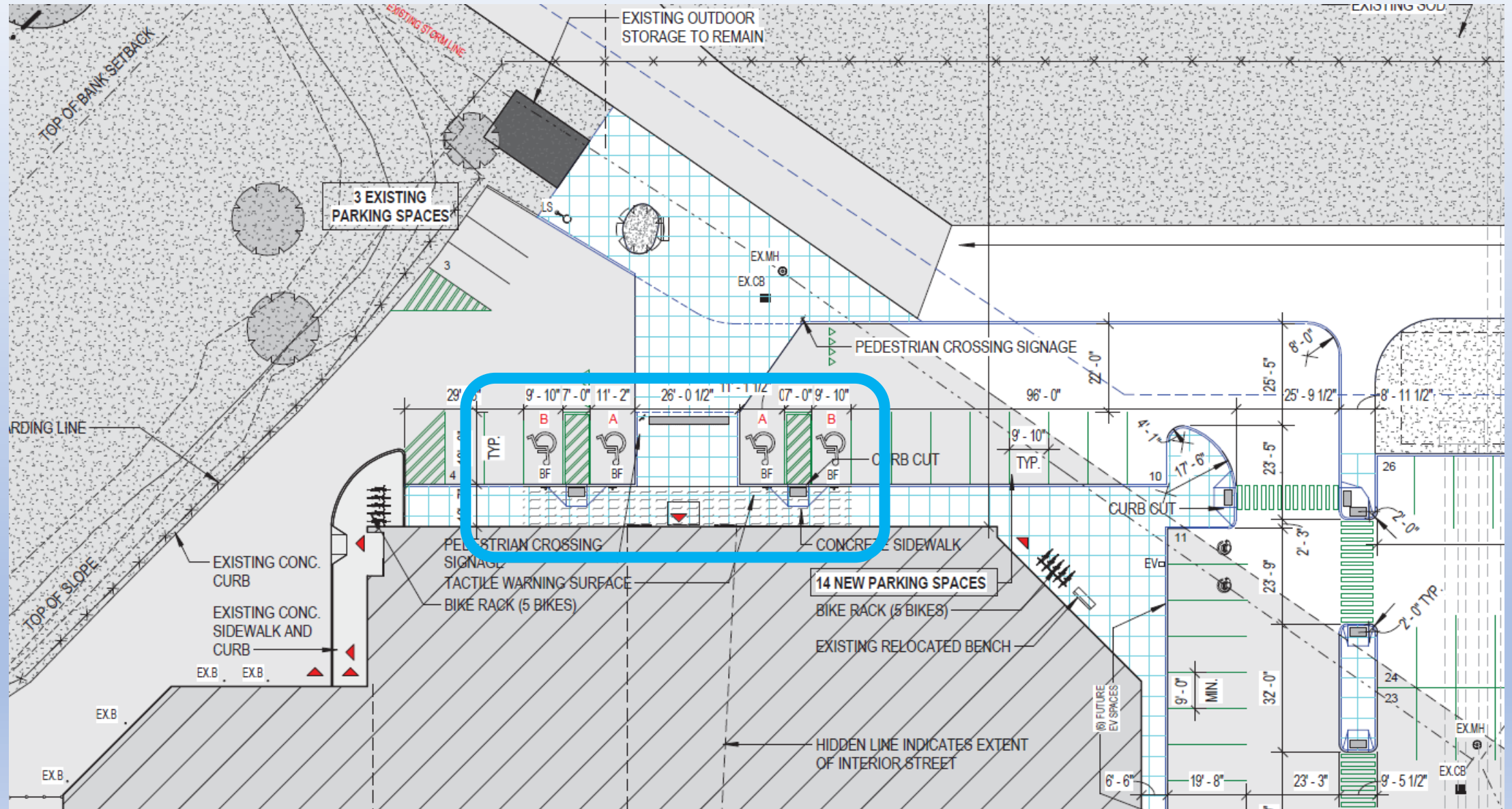
- Detailed design commenced in early 2022
- City finalized purchase of building in Nov. 2022
- Detailed design completed, RFT issued Feb 17th, 2023
- RFT closes March 30th
- Construction commence May 15th (TBC)
- Construction completion, occupancy – April 2025 (Phase 1) (TBC)
- Phase 2 detailed design and public engagement to commence in Q2 2023

Site Plan

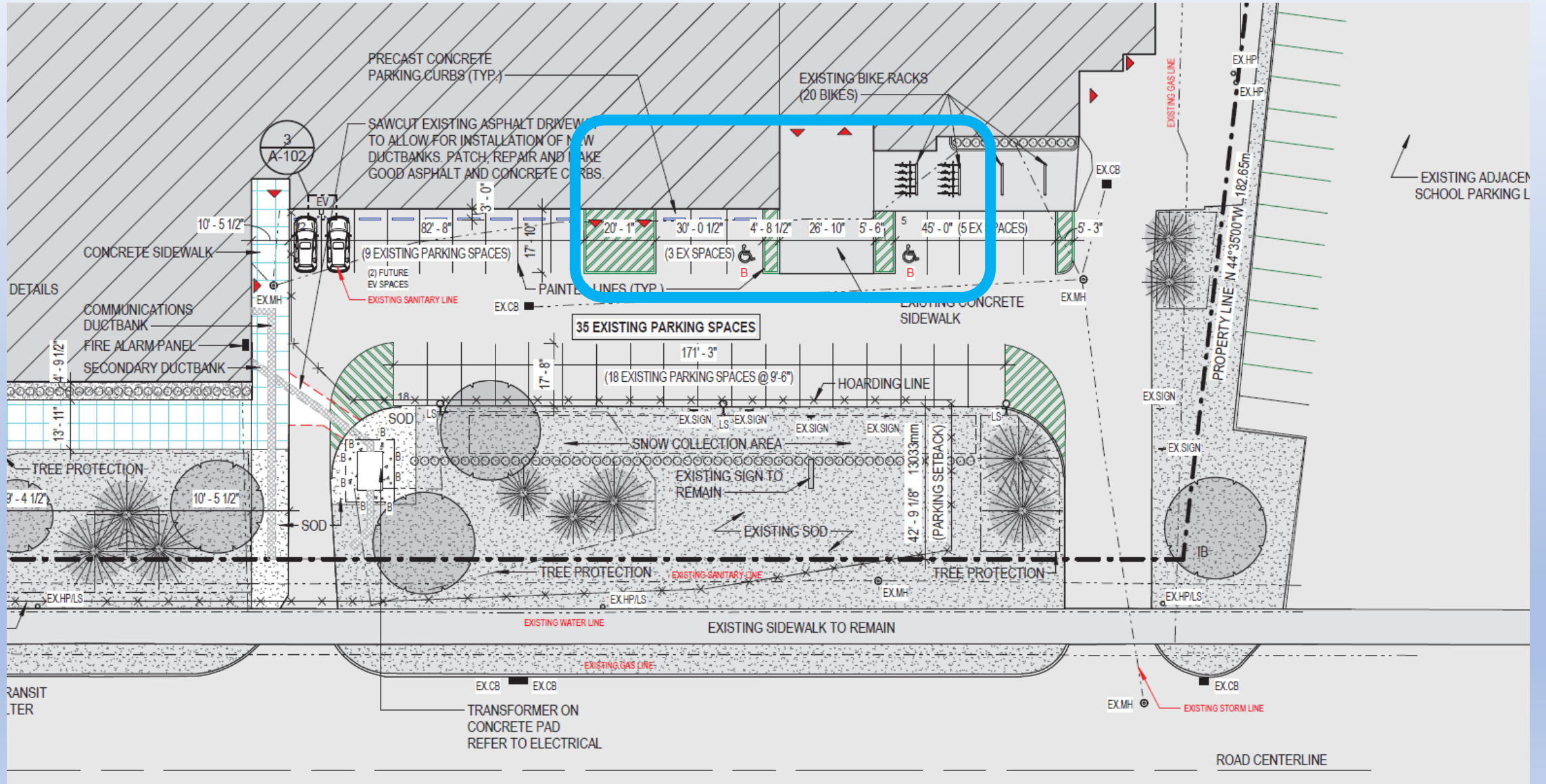


[illegible]

Rear Entrance

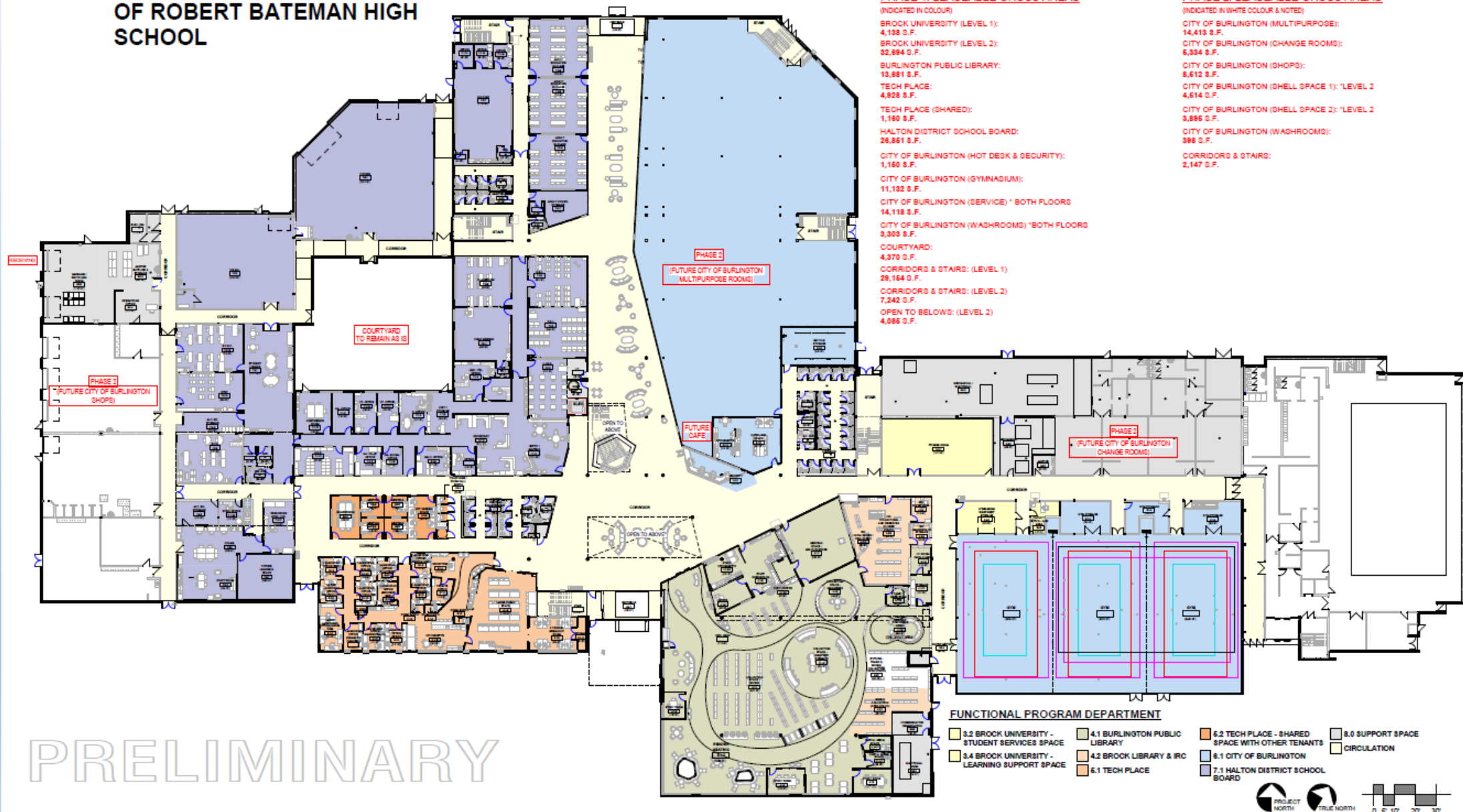


East (Pool) Entrance



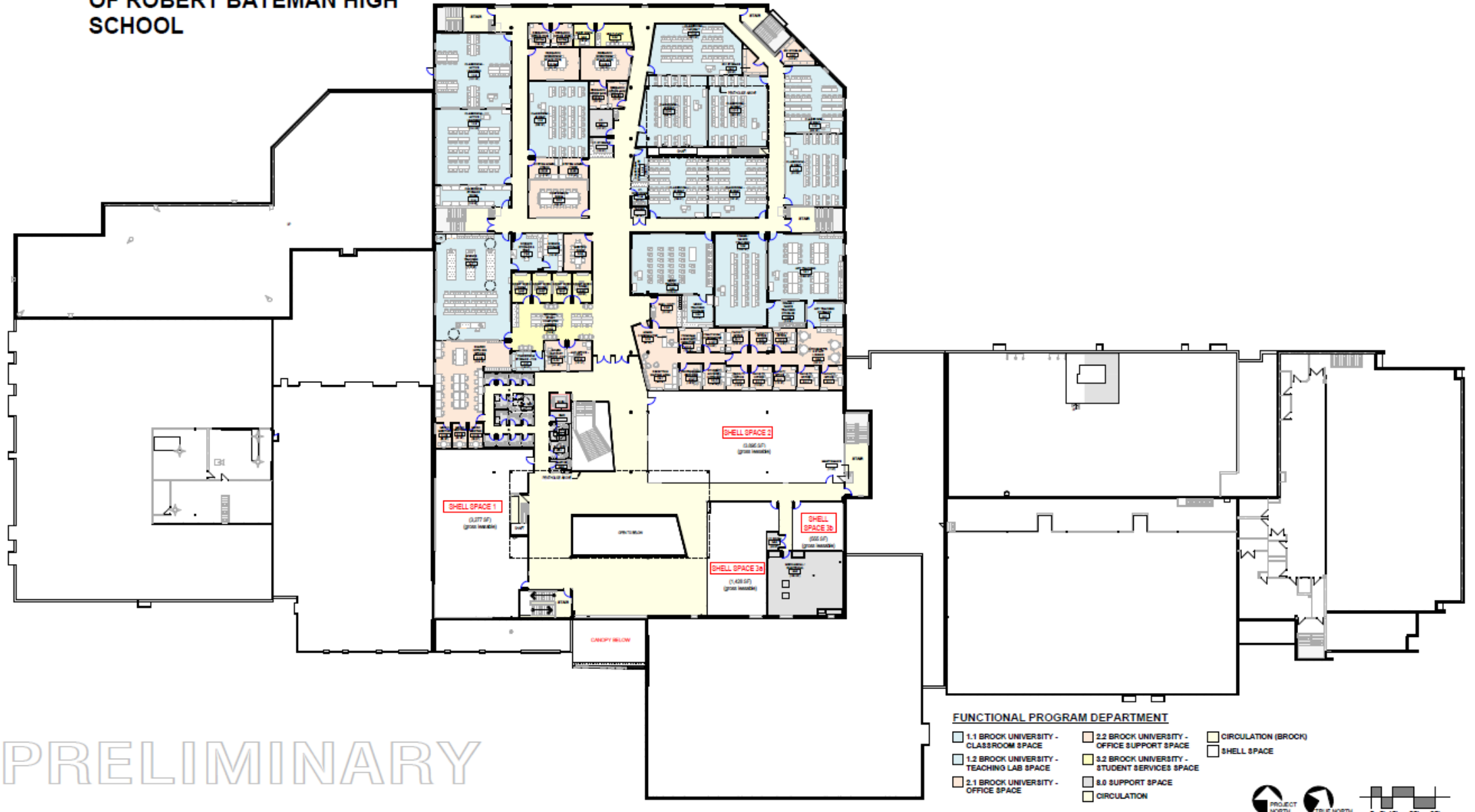
Ground Floor Plan – Tenant Space

RENOVATION AND CONVERSION OF ROBERT BATEMAN HIGH SCHOOL

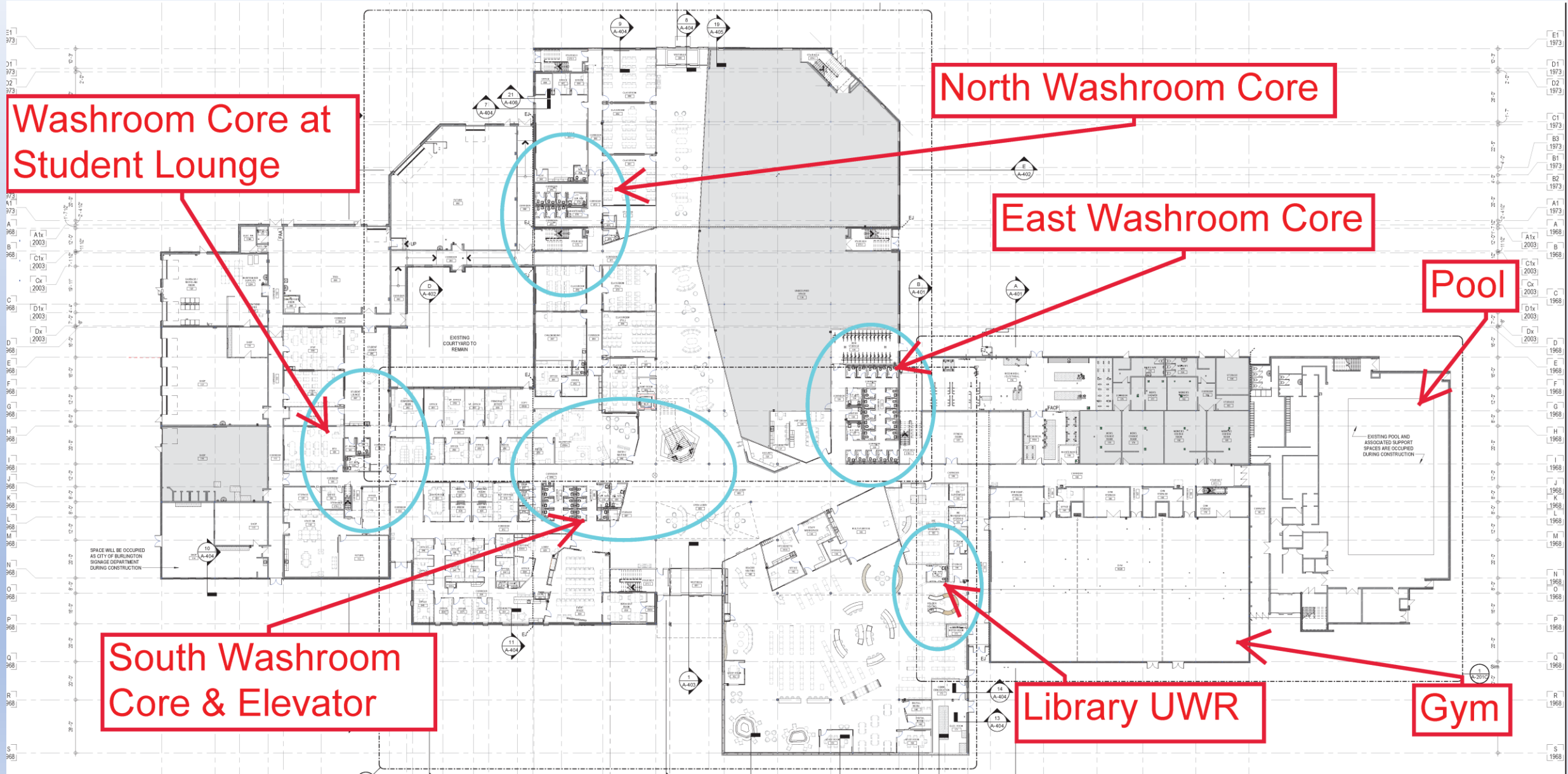


Second Floor Plan – Tenant Space

RENOVATION AND CONVERSION
OF ROBERT BATEMAN HIGH
SCHOOL

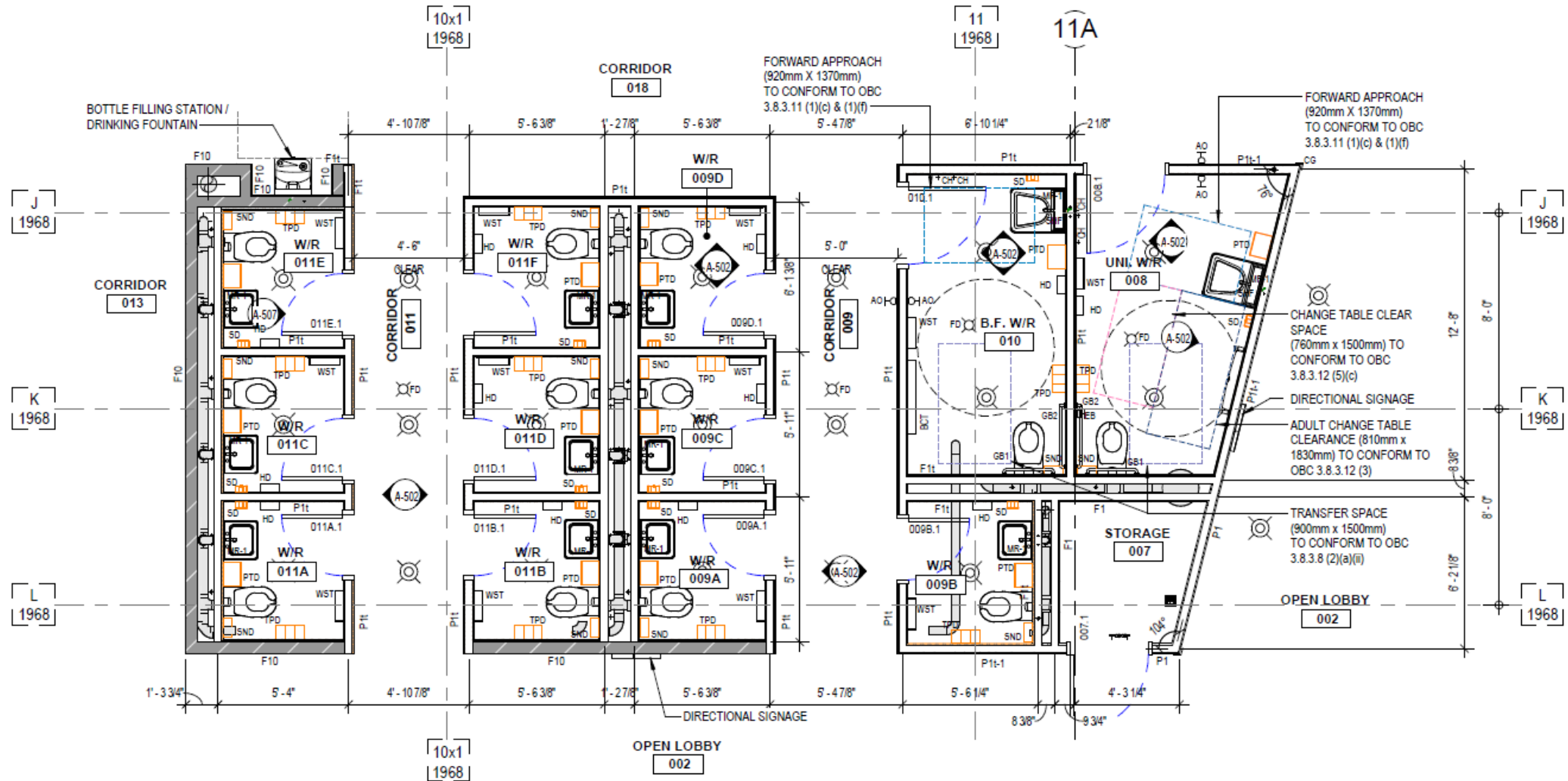


Ground Floor Plan

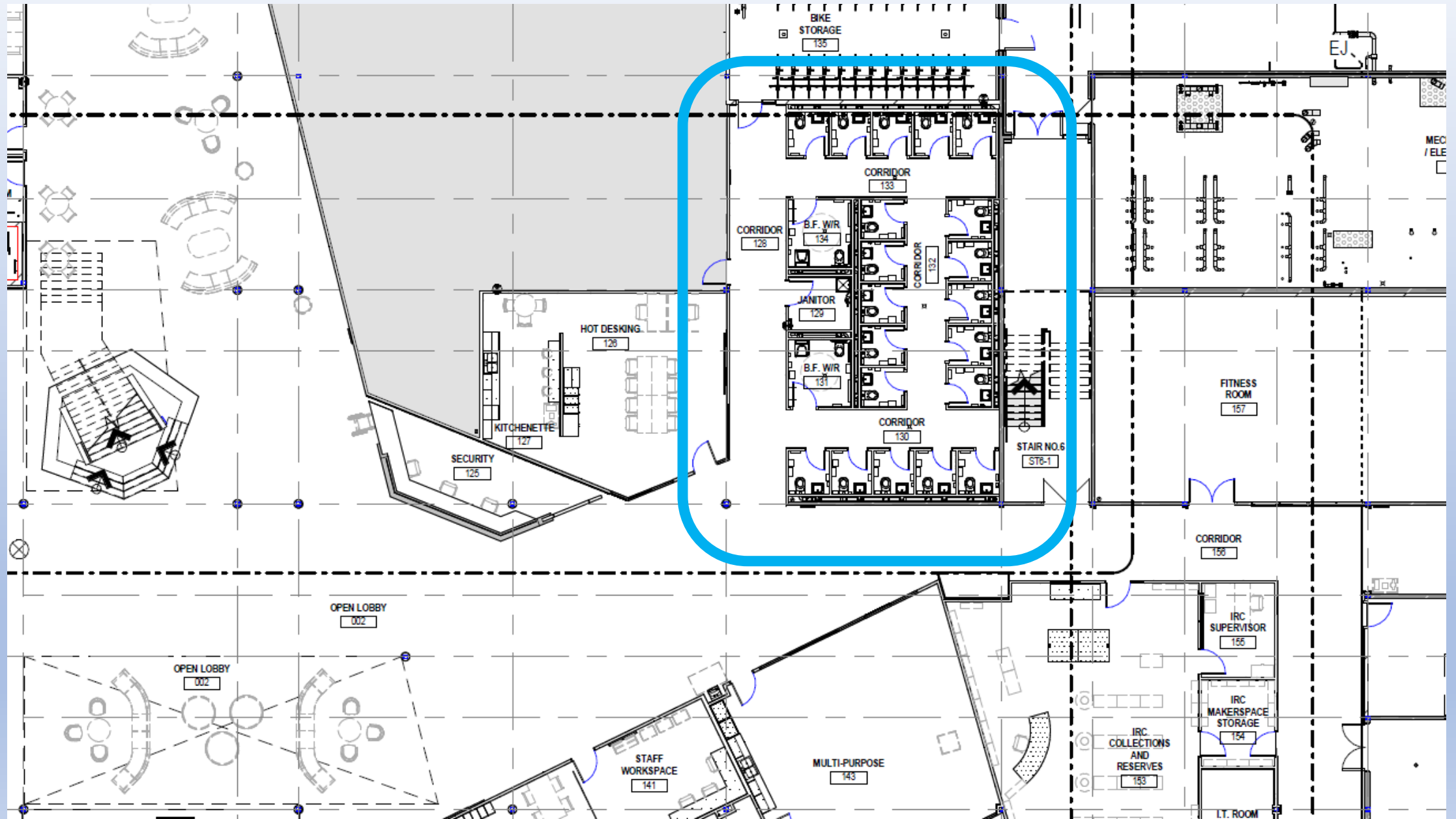


Architectural floor plan of a building interior, showing various rooms, corridors, and service areas. A blue outline highlights a specific section of the plan, including rooms 011A through 011F, 009A through 009D, and 007. The plan includes labels for 'OFFICE', 'CORRIDOR', 'ENTRY / WAITING', 'OPEN LOBBY', 'KITCHENETTE', 'SECURITY', and 'FUTURE CAFE'. It also shows dimensions, door types, and structural elements like walls and stairs.

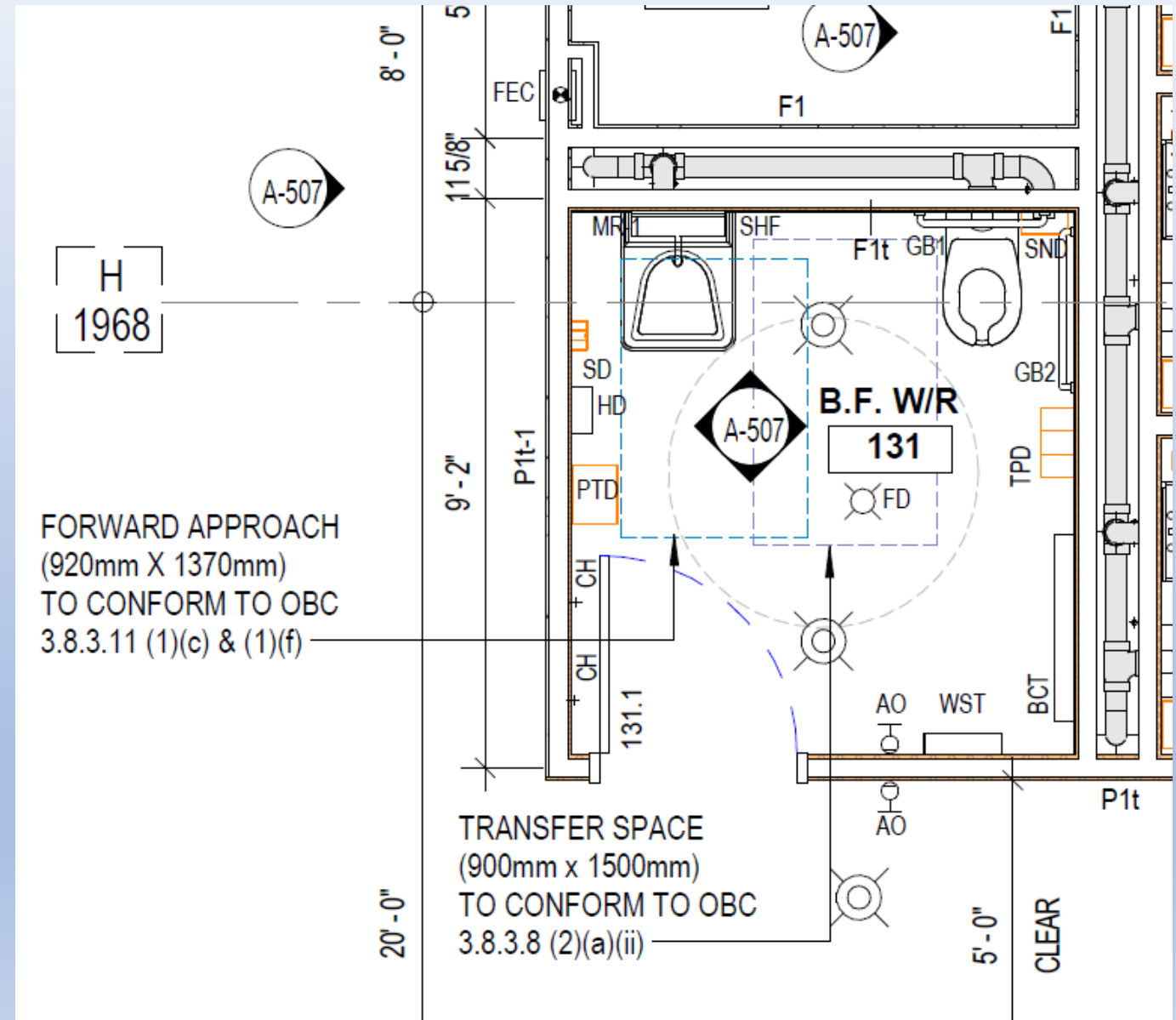
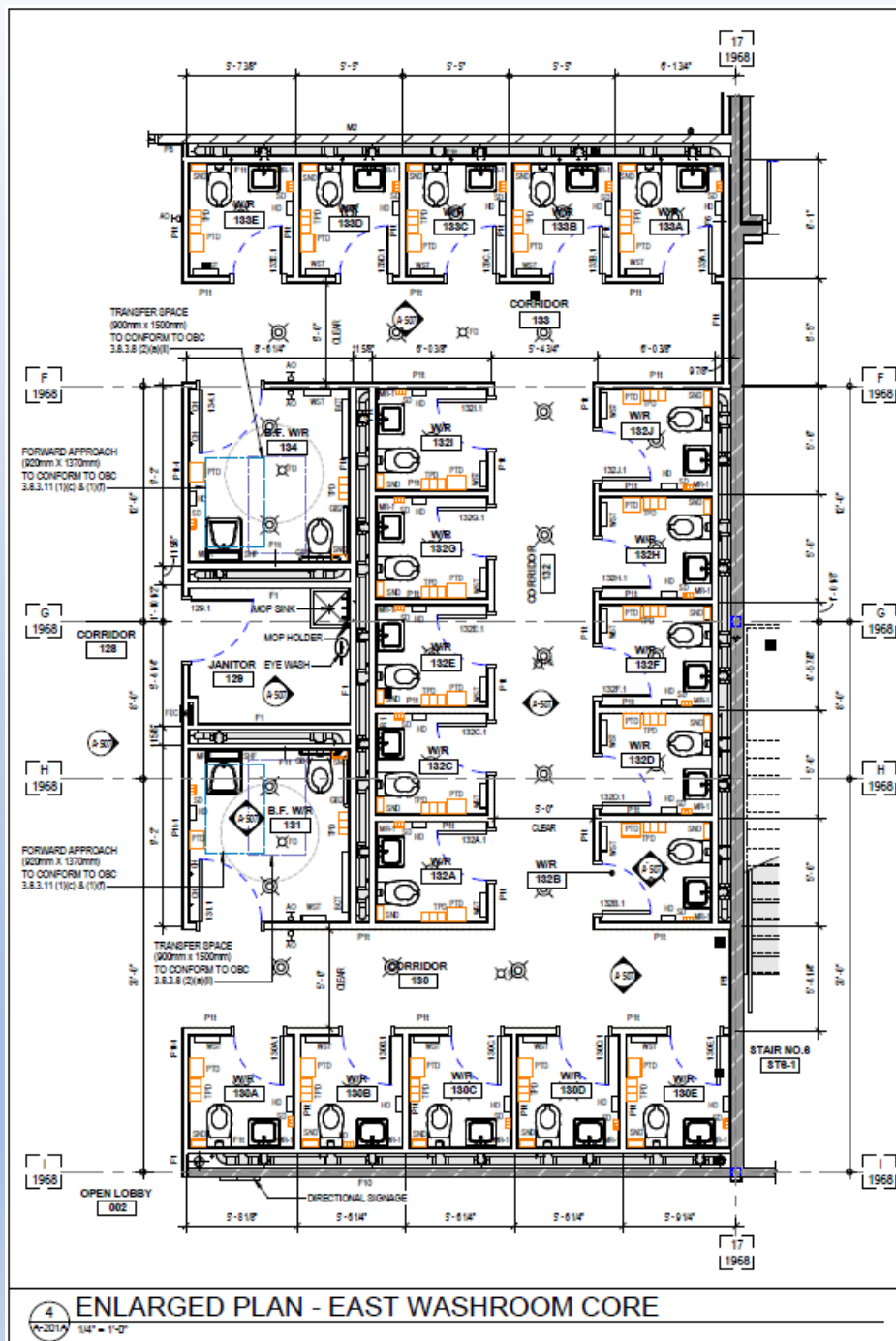
South Washroom Core - Details



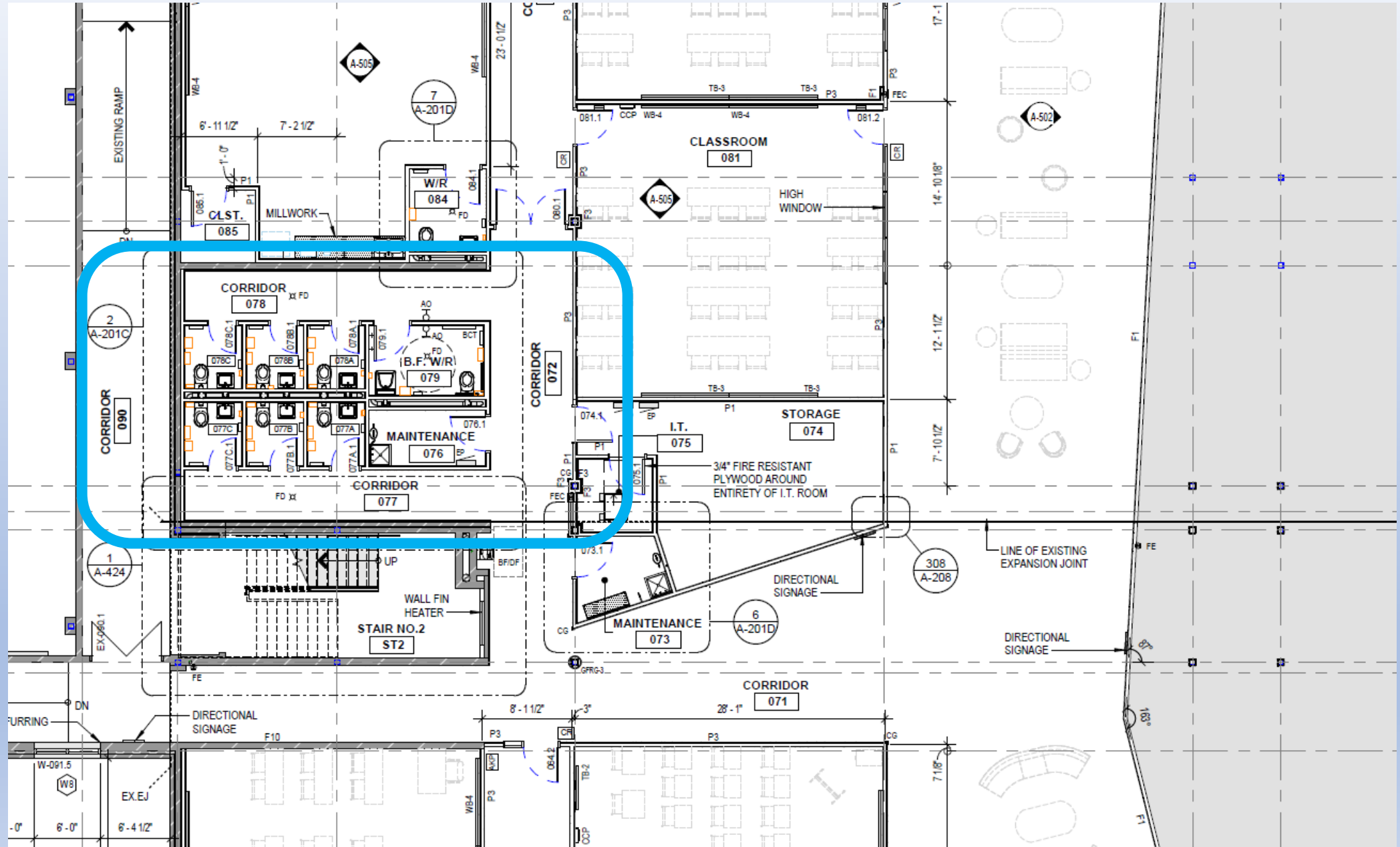
East Washroom Core



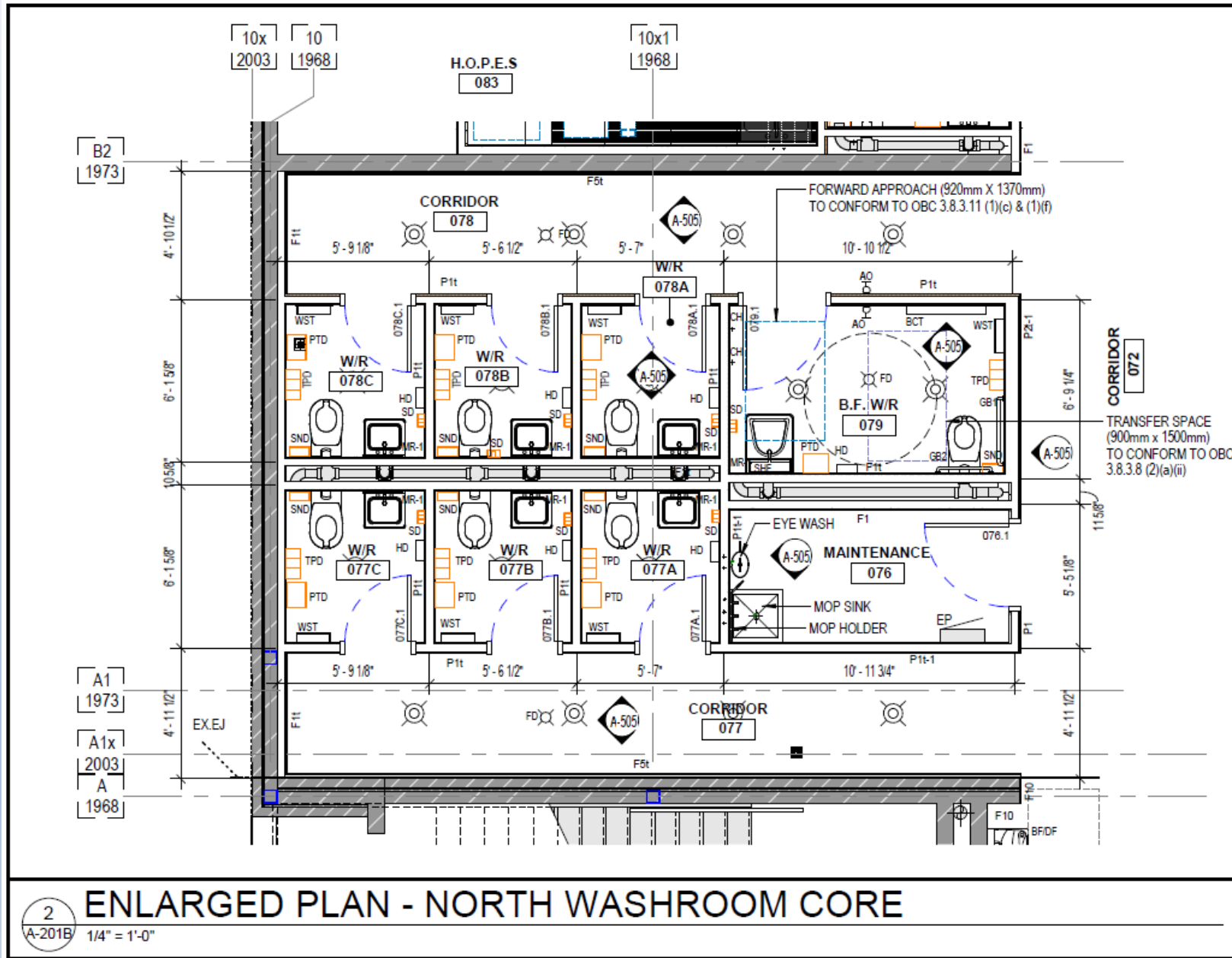
East Washroom Core - Details



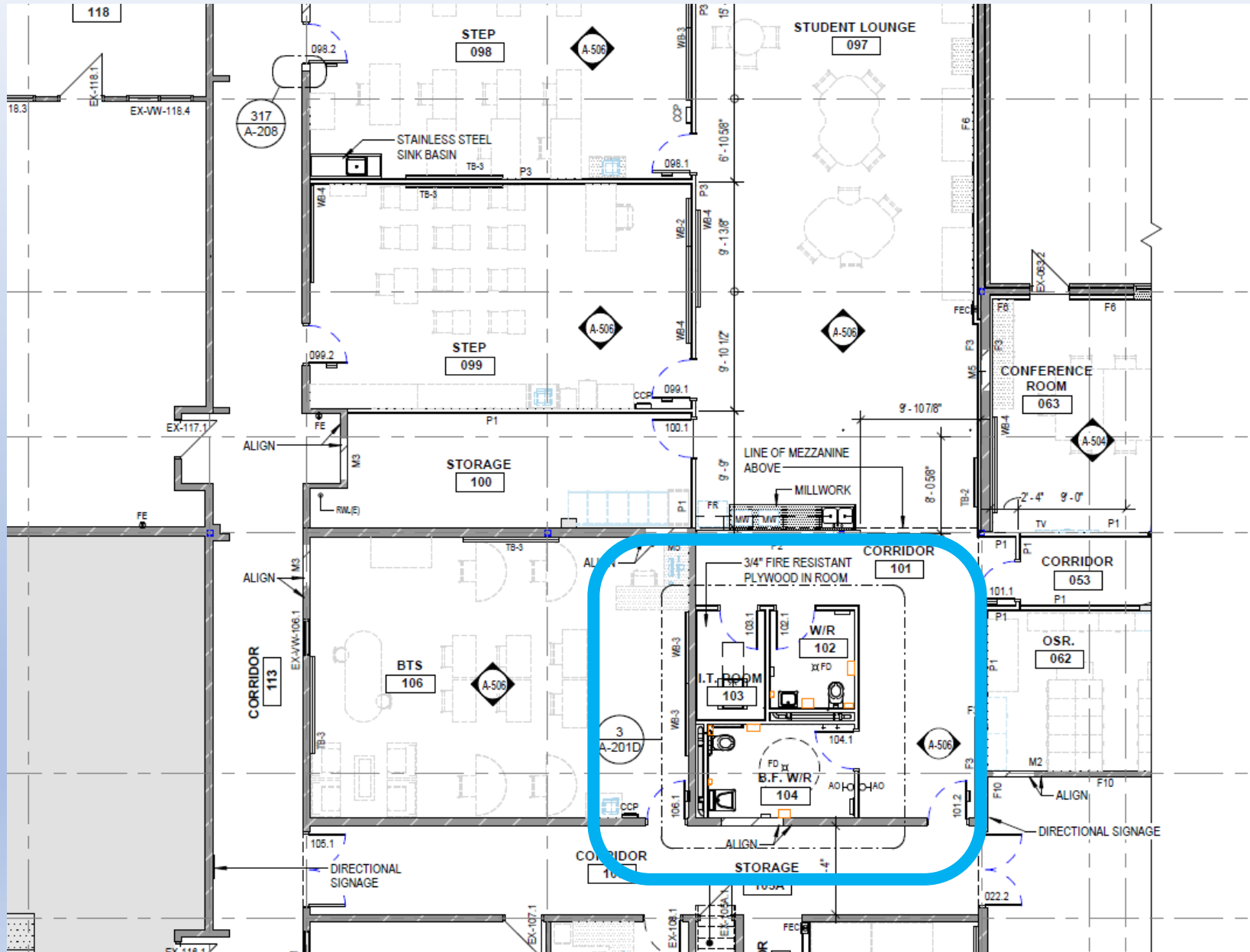
North Washroom Core



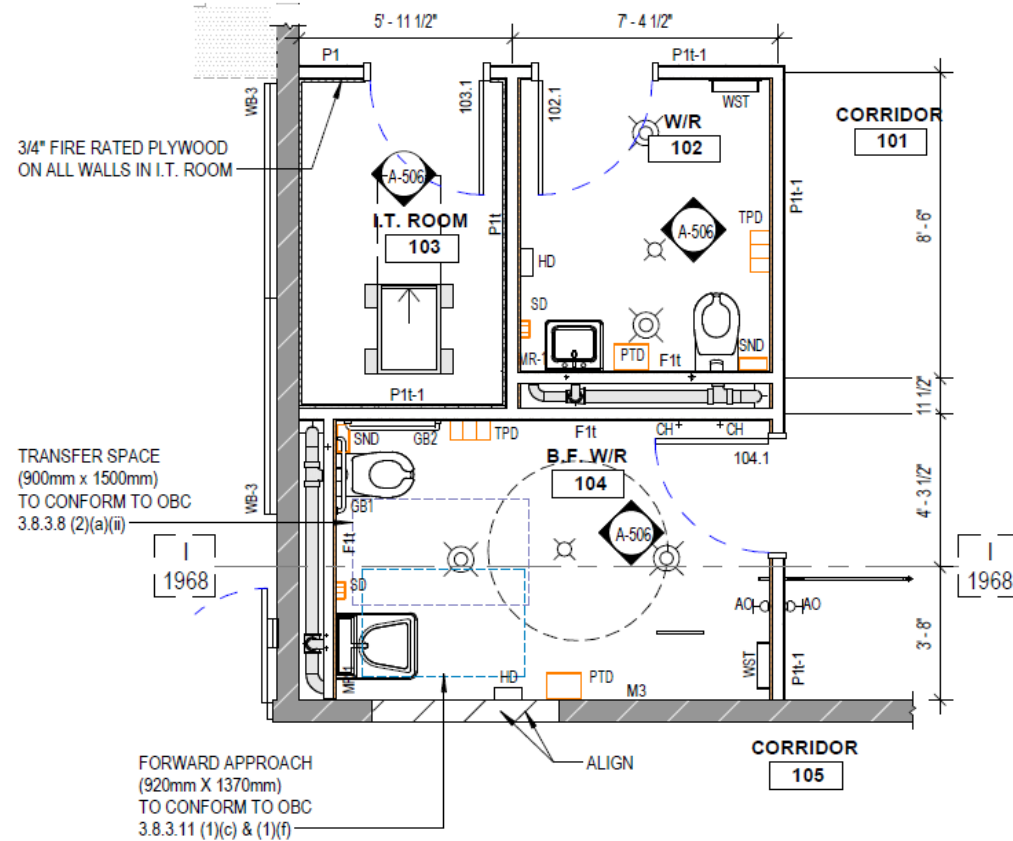
North Washroom Core - Details



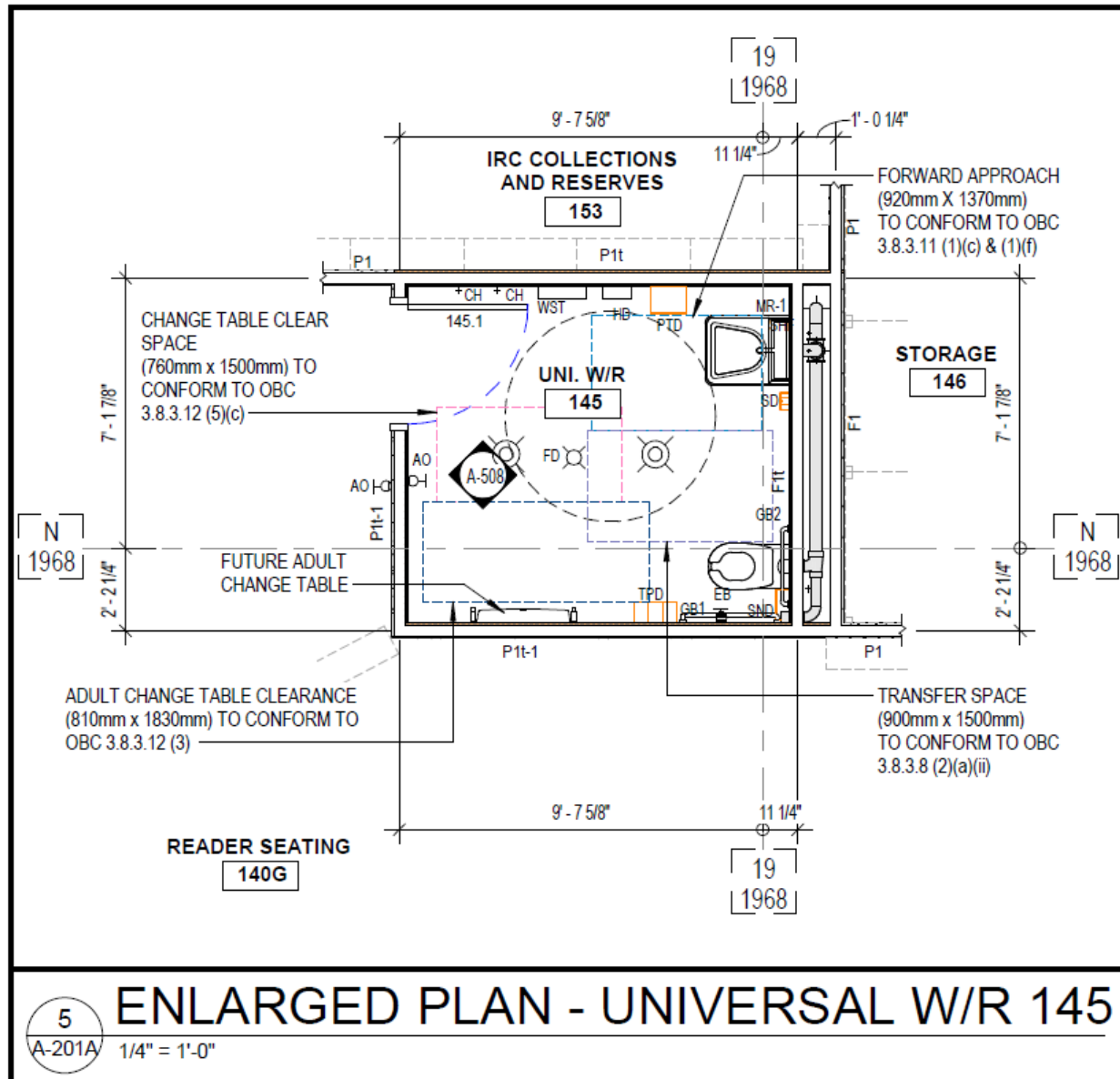
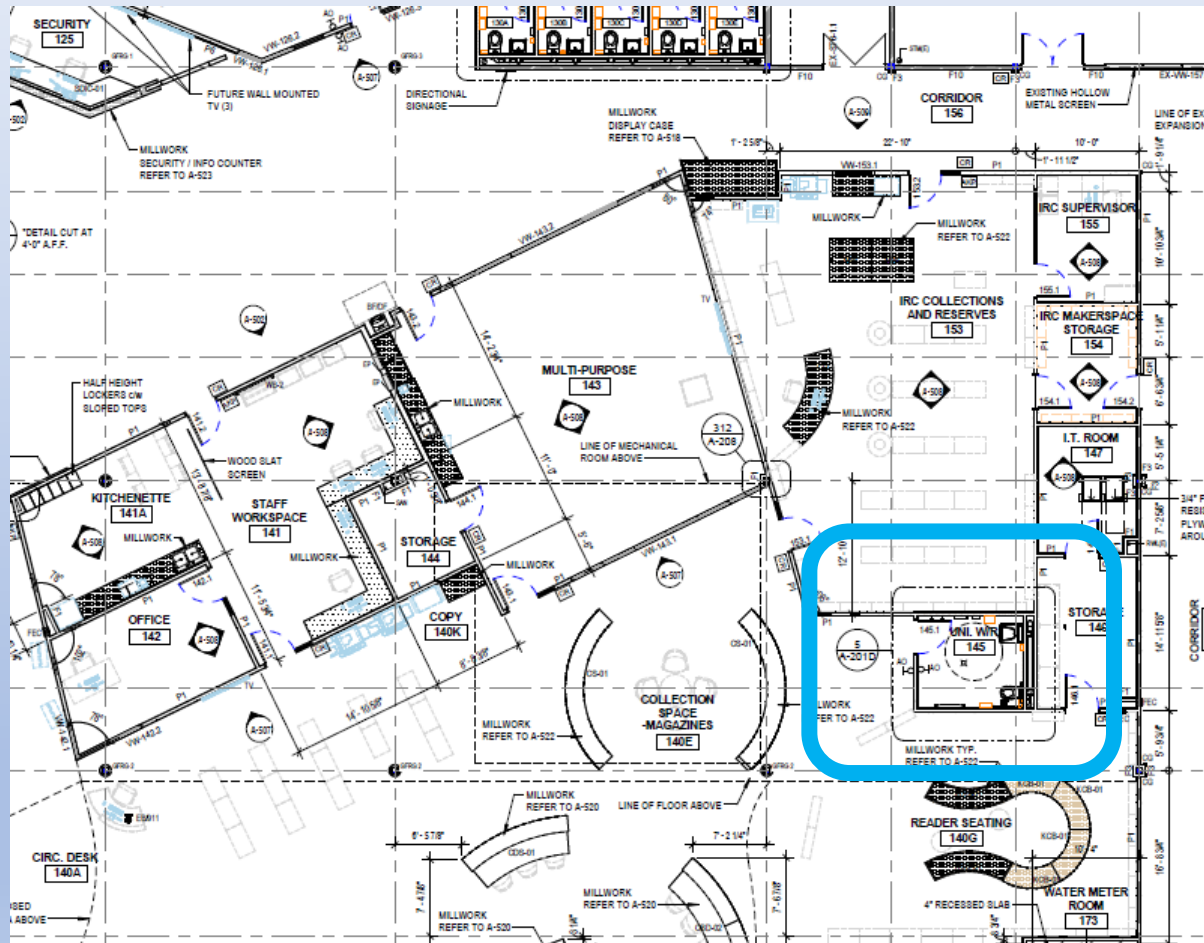
Washroom Core at Student Lounge



Washroom Core at Student Lounge - Details



Library UWR – Plan & Details



The image is a detailed architectural floor plan of a building, likely a school or institutional facility, showing various rooms, corridors, and outdoor spaces. The plan is overlaid with a grid system labeled with letters (A, B, C, D, E, F) and numbers (1, 2, 3, 4, 5, 6, 7, 8, 9, 10, 11, 12, 13, 14, 15, 16, 17, 18, 19, 20, 21, 22, 23, 24, 25, 26, 27, 28, 29, 30, 31, 32, 33, 34, 35, 36, 37, 38, 39, 40, 41, 42, 43, 44, 45, 46, 47, 48, 49, 50, 51, 52, 53, 54, 55, 56, 57, 58, 59, 60, 61, 62, 63, 64, 65, 66, 67, 68, 69, 70, 71, 72, 73, 74, 75, 76, 77, 78, 79, 80, 81, 82, 83, 84, 85, 86, 87, 88, 89, 90, 91, 92, 93, 94, 95, 96, 97, 98, 99, 100). Key areas are highlighted with red annotations:

- Washroom Core, Elevator & Stair:** A red circle highlights a central area, with a red arrow pointing to it from the label.
- Pool:** A red arrow points to a large rectangular area on the right side of the plan, labeled "Pool".
- Gym:** A red arrow points to a large rectangular area on the right side of the plan, labeled "Gym".

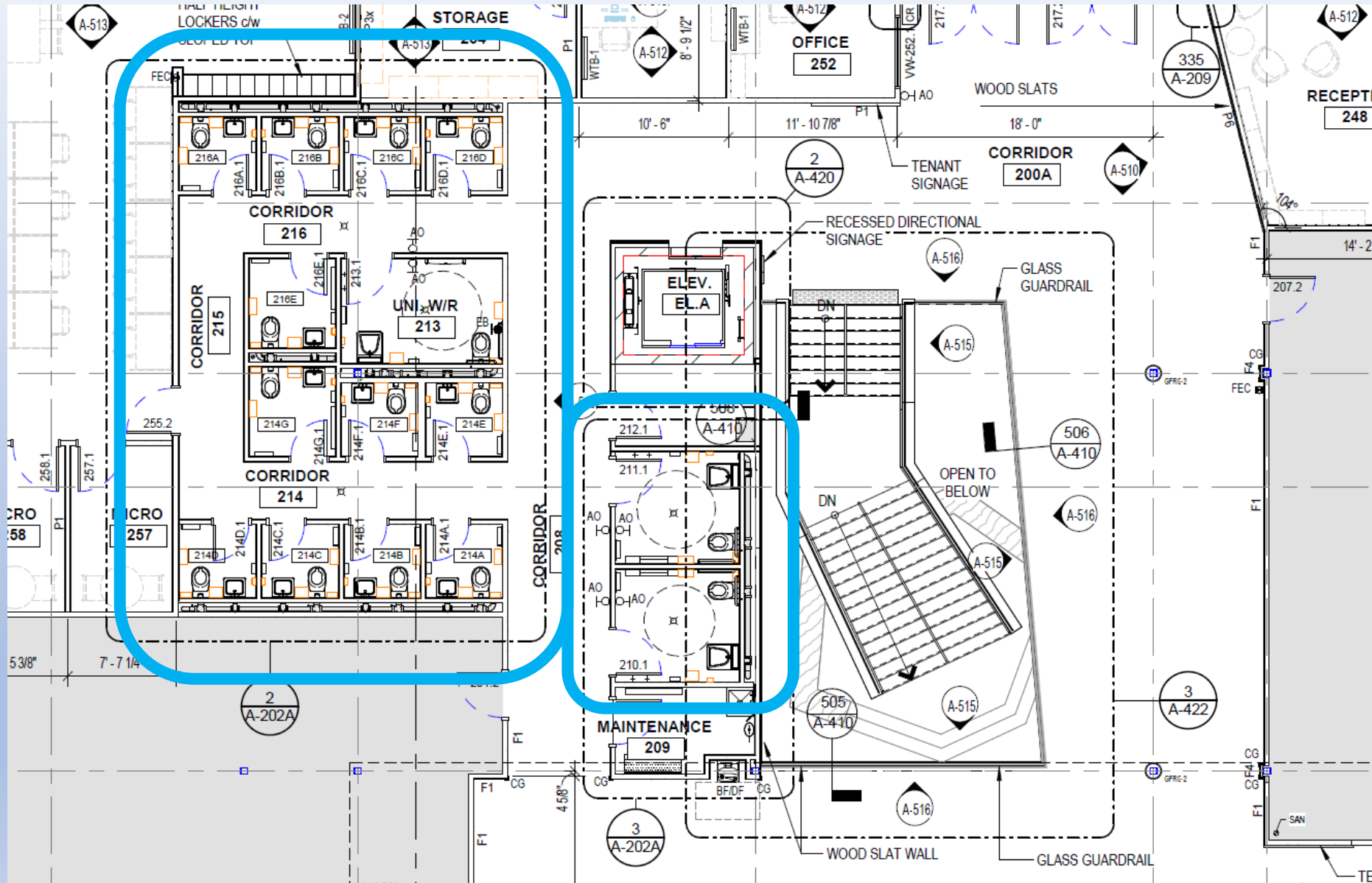
Other visible features include a "COURTYARD BELOW" area, a "PREFINISHED METAL PARAPET FLASHING" area, and various rooms labeled with numbers and letters (e.g., 10 A-404, 11 A-404, 12 A-404, 13 A-404, 14 A-404, 15 A-404, 16 A-404, 17 A-404, 18 A-404, 19 A-404, 20 A-404, 21 A-404, 22 A-404, 23 A-404, 24 A-404, 25 A-404, 26 A-404, 27 A-404, 28 A-404, 29 A-404, 30 A-404, 31 A-404, 32 A-404, 33 A-404, 34 A-404, 35 A-404, 36 A-404, 37 A-404, 38 A-404, 39 A-404, 40 A-404, 41 A-404, 42 A-404, 43 A-404, 44 A-404, 45 A-404, 46 A-404, 47 A-404, 48 A-404, 49 A-404, 50 A-404, 51 A-404, 52 A-404, 53 A-404, 54 A-404, 55 A-404, 56 A-404, 57 A-404, 58 A-404, 59 A-404, 60 A-404, 61 A-404, 62 A-404, 63 A-404, 64 A-404, 65 A-404, 66 A-404, 67 A-404, 68 A-404, 69 A-404, 70 A-404, 71 A-404, 72 A-404, 73 A-404, 74 A-404, 75 A-404, 76 A-404, 77 A-404, 78 A-404, 79 A-404, 80 A-404, 81 A-404, 82 A-404, 83 A-404, 84 A-404, 85 A-404, 86 A-404, 87 A-404, 88 A-404, 89 A-404, 90 A-404, 91 A-404, 92 A-404, 93 A-404, 94 A-404, 95 A-404, 96 A-404, 97 A-404, 98 A-404, 99 A-404, 100 A-404).

Washroom Core, Elevator & Stair

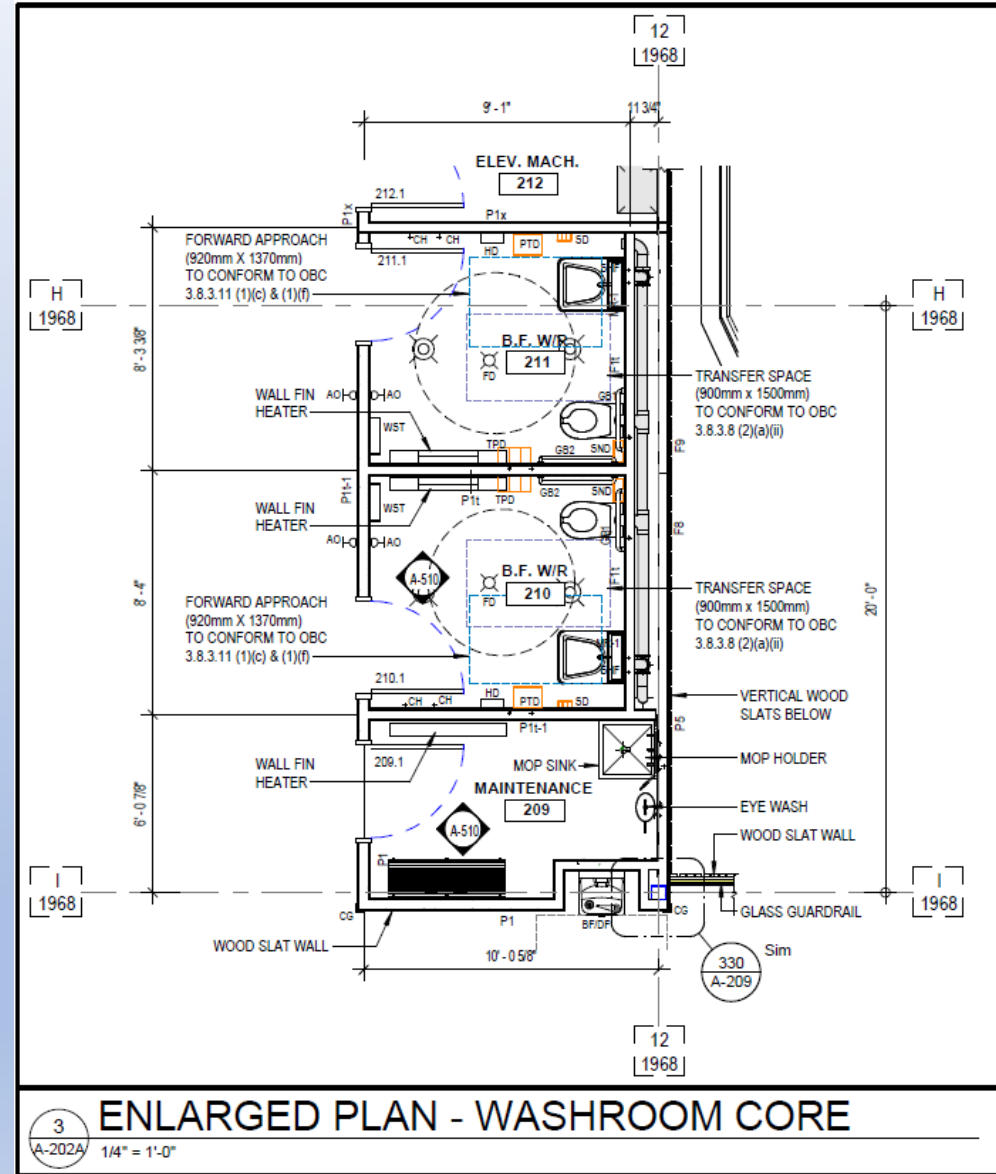
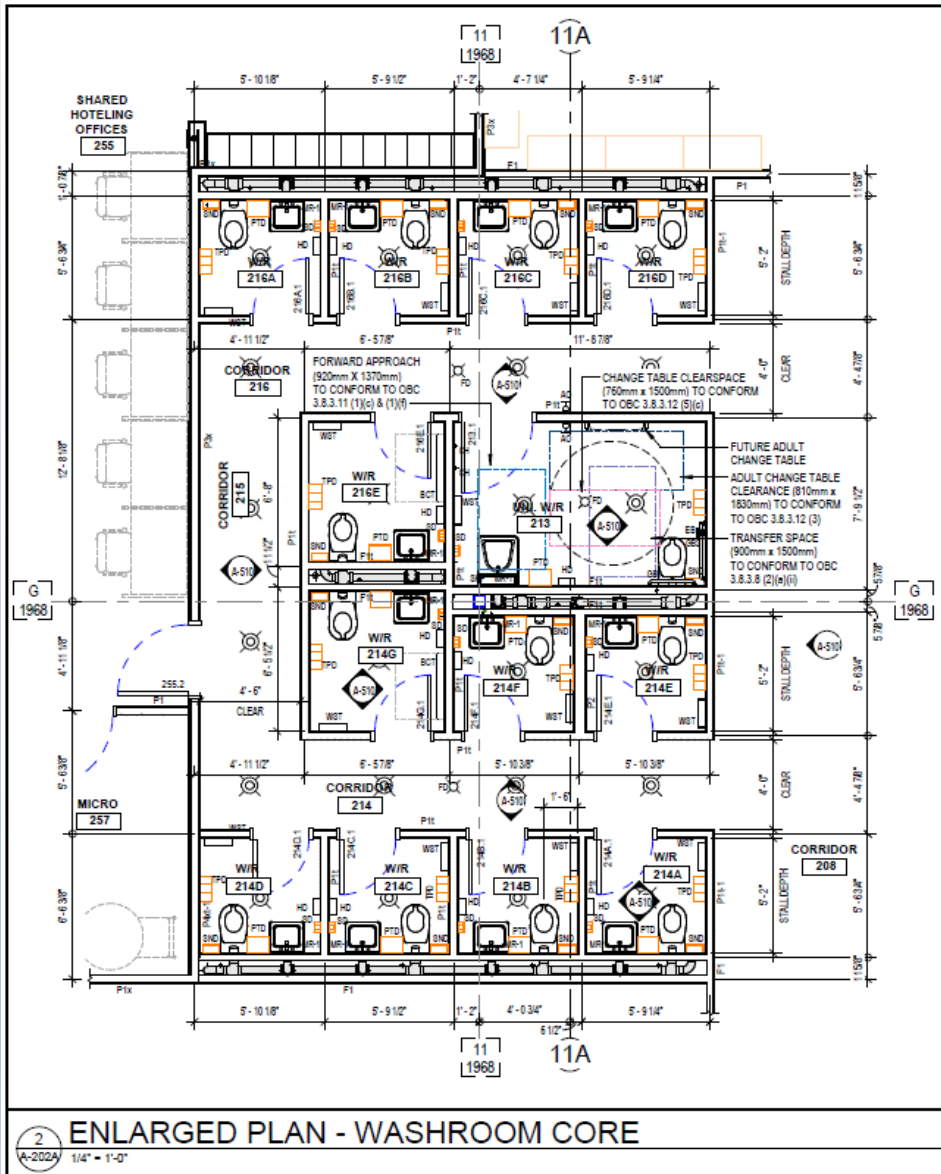
Pool

Gym

Second Floor Washroom Core, Elevator & Stair



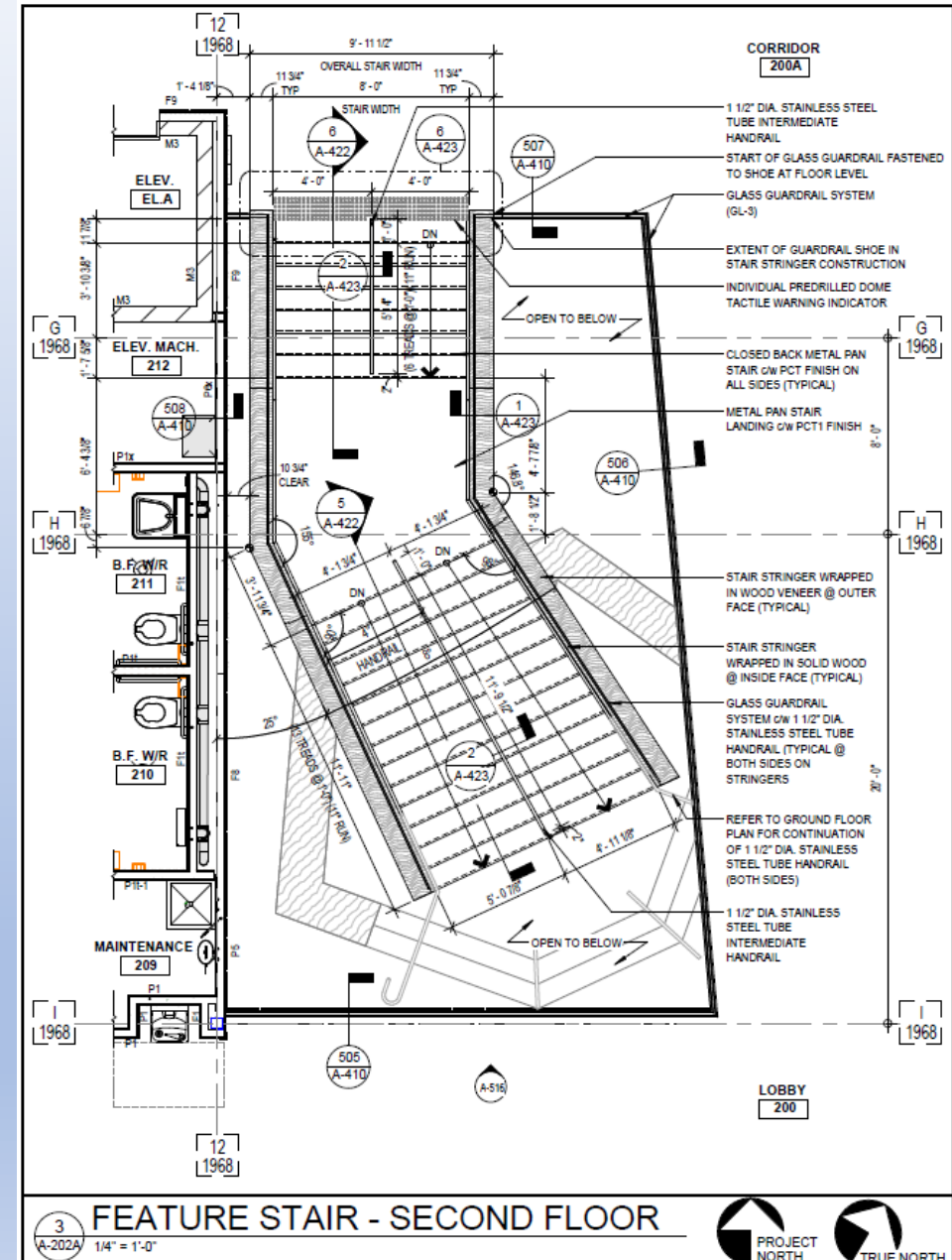
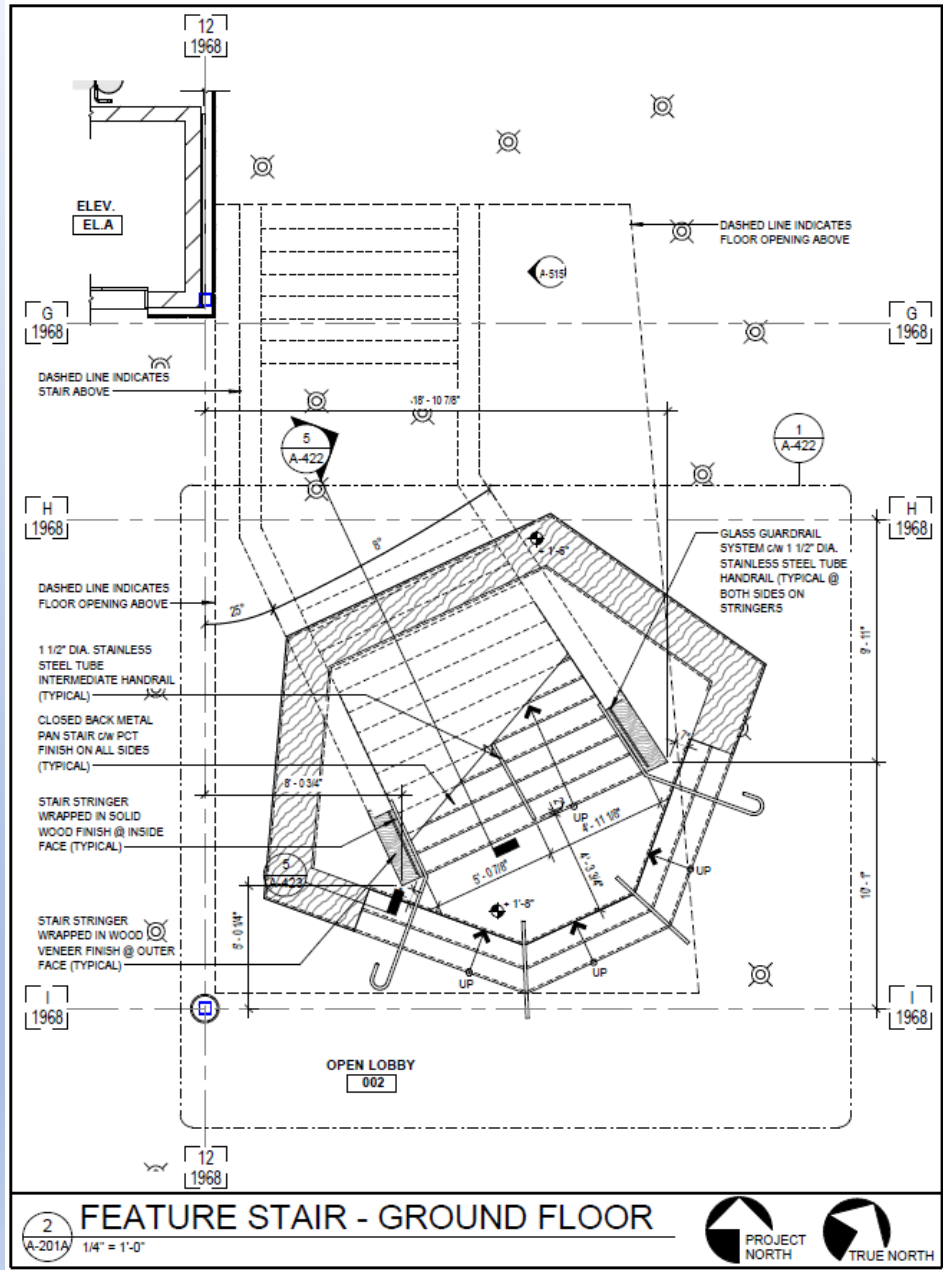
Second Floor Washroom Core



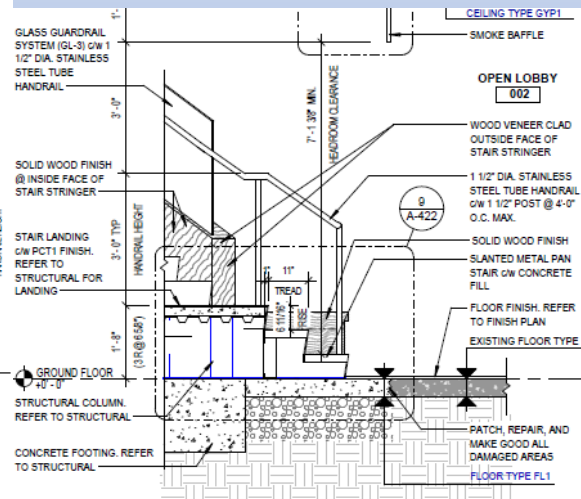
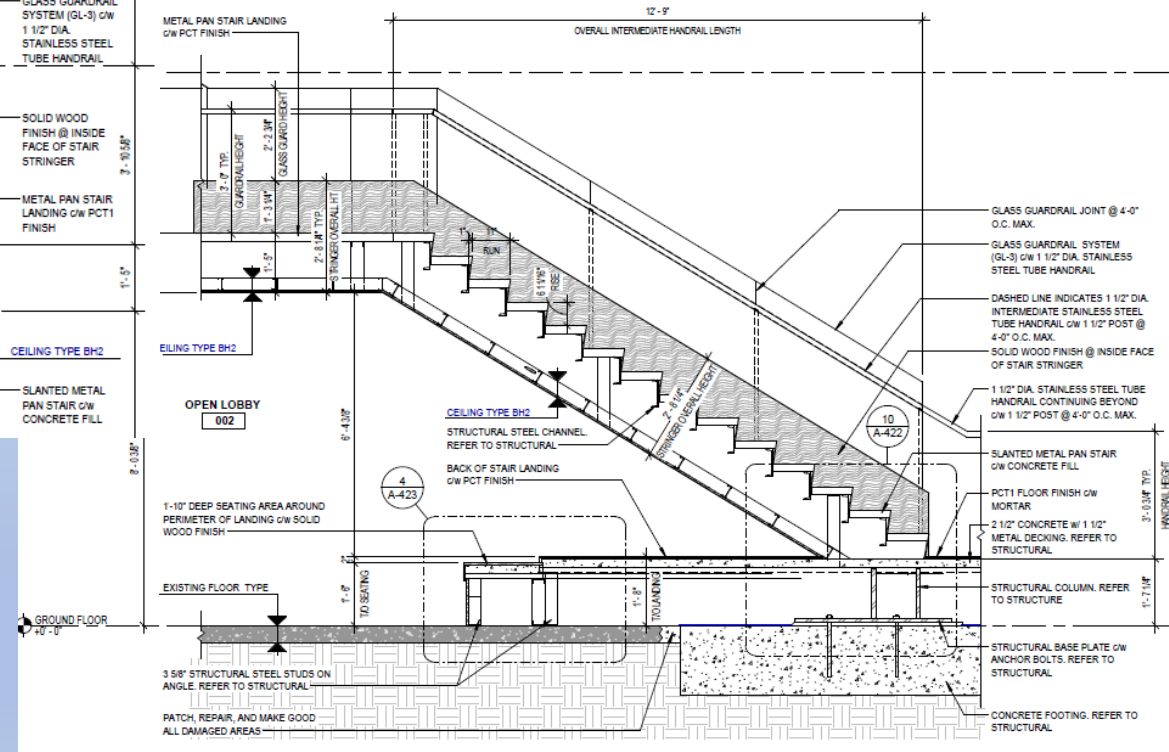
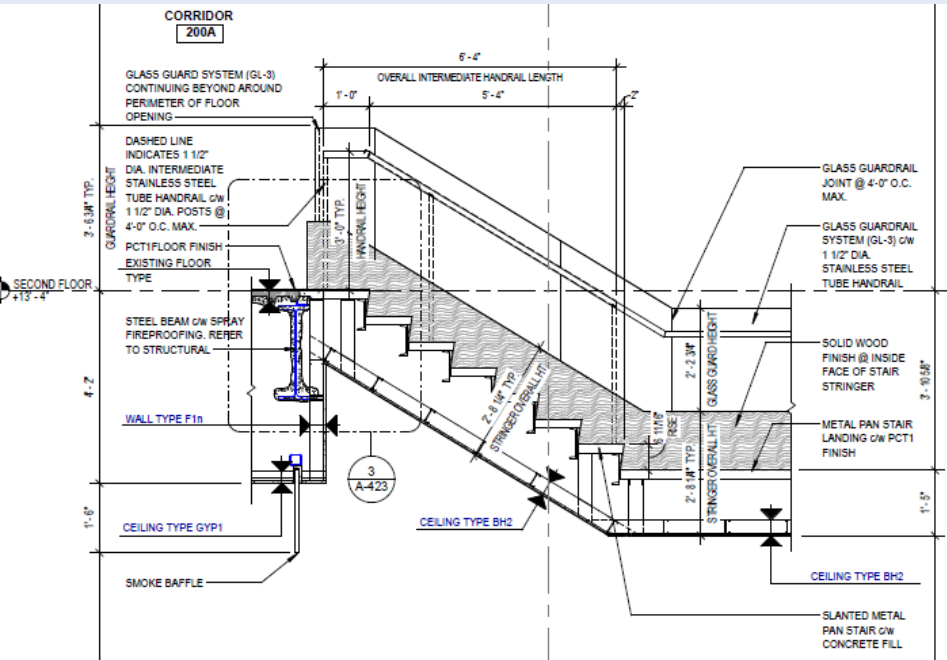
Feature Stair



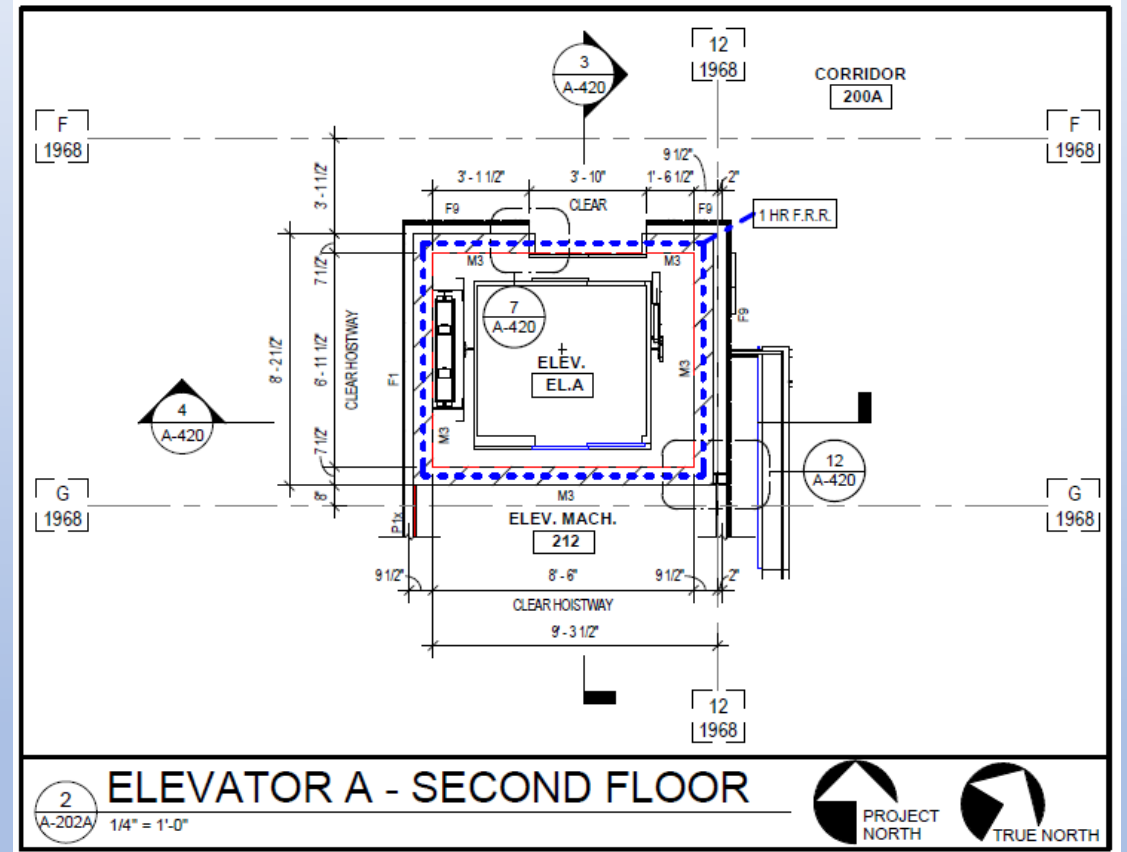
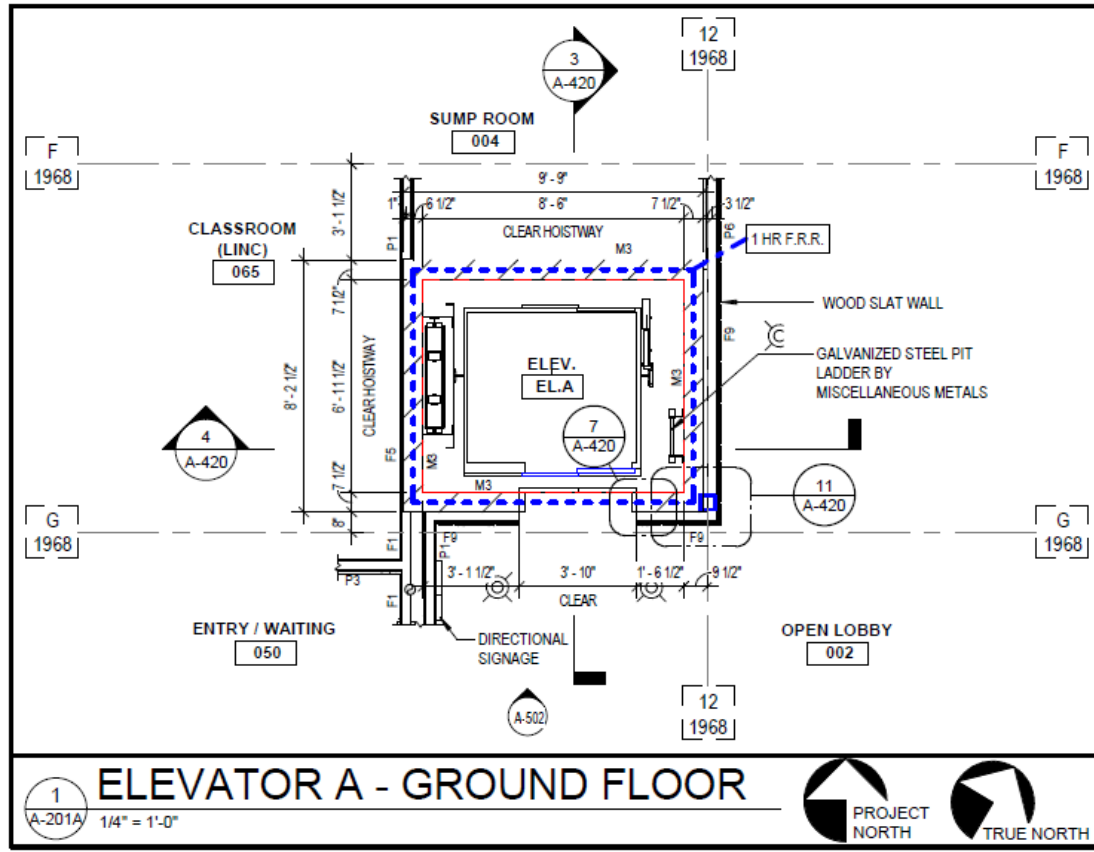
Feature Stair - Plans



Feature Stair - Sections



Elevator



Signage & Wayfinding - Exterior



Exterior Tenant Lettering



Interior Wayfinding



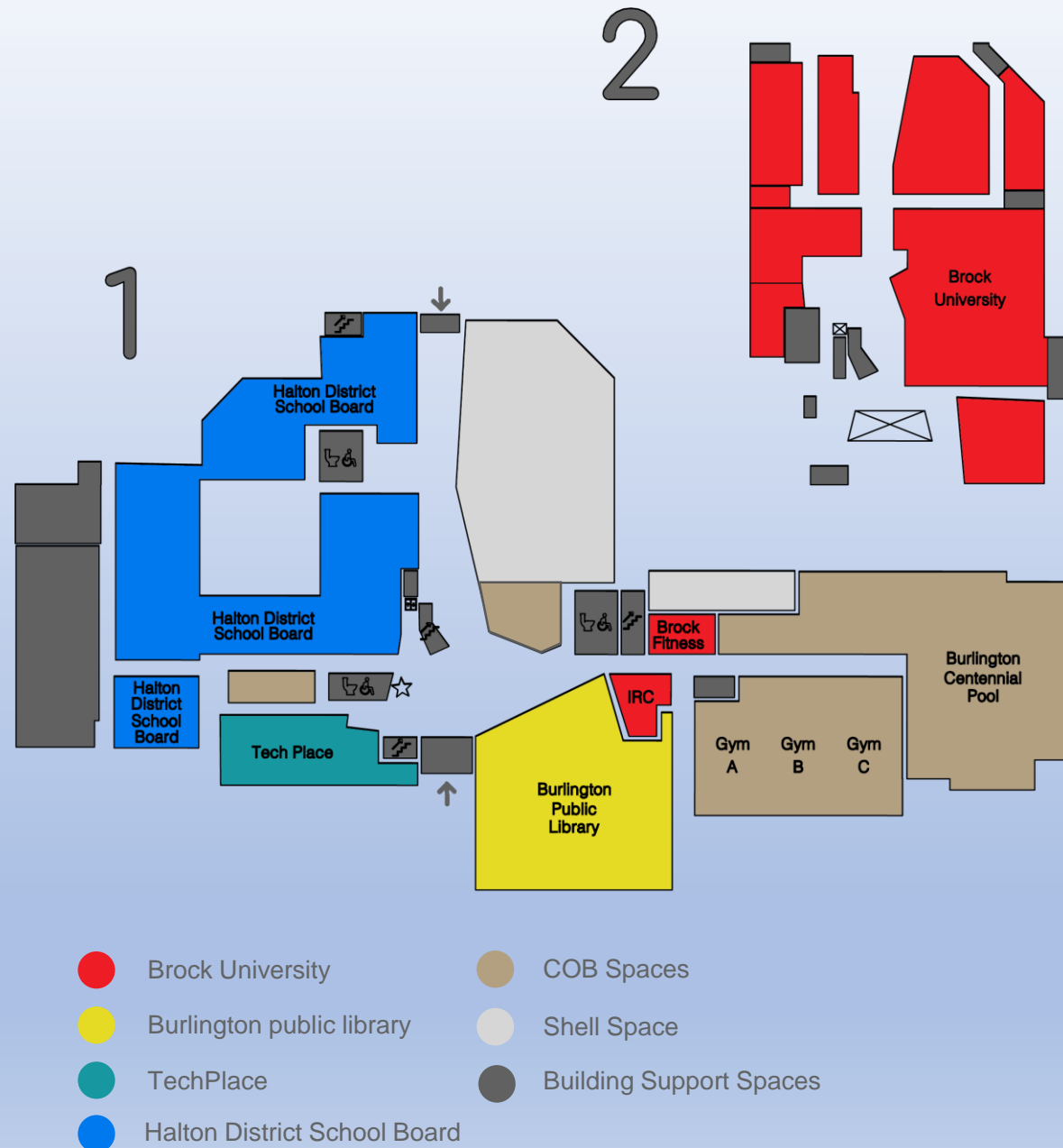
Wayfinding Map

FEATURES

- Map of Building
- Colour coded
- Point of reference
- Easy to navigate through space

FINISHES

- Coloured adhesive decals
- Can be removed / replaced



Interior Wayfinding – Suite Identification



Directional – Wall Mounted



DIRECTIONAL

- Right and Left orientation of sign
- Located all around building
- Text to be aligned to direction
- 5' x 2'



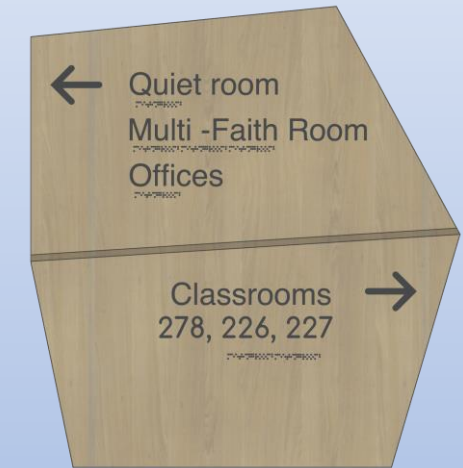
BUILDING DIRECTORY

- Right and Left orientation of sign
- Located at all entrances
- Text to be aligned to flat edge of sign
- 5' x 2'-4"



ELEVATOR / STAIR DIRECTORY

- Right and Left orientation of sign
- Located at elevators and main stair
- Text to be aligned to flat edge of sign
- 5' X 2'-4"



DIRECTIONAL (TENANT SUITE)

- Right and Left orientation of sign
- Located within Tenant suite
- Text to be aligned to direction
- 2'-2" x 2'-2"

FINISHES

- Wood grain finish
- Raised charcoal lettering and symbols
- Laser Engraved Arrows, level numbers and reveal
- Braille

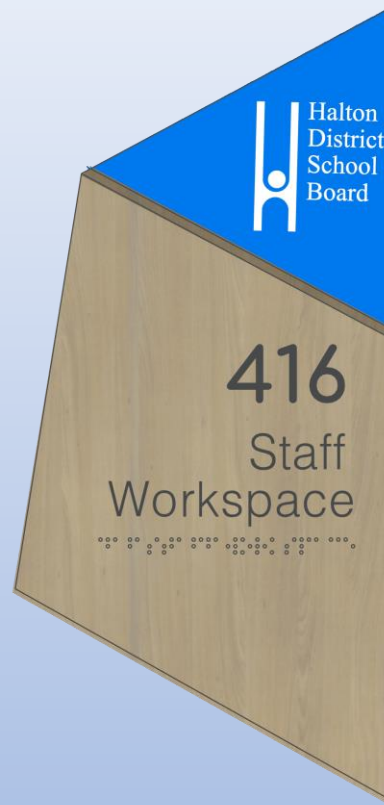
Room Identification (Style 1)



BURLINGTON PUBLIC LIBRARY



BROCK UNIVERSITY



**HALTON DISTRICT
SCHOOL BOARD**



TECHPLACE

FINISHES

- Piece 1 – Wood with laser engraved lettering and reveal, Braille
- Piece 2 – Acrylic with raised white logo

- Right and Left orientation of sign
- Sign to be located on wall adjacent to latch side of the door
- 1'-4" x 6"
- Symbol to be centered
- Text to be aligned to flat edge of sign

Room Identification (Style 2)

FINISHES

- Wood with laser engraved lettering and reveal, Braille
- Acrylic tenant colour



BURLINGTON PUBLIC LIBRARY



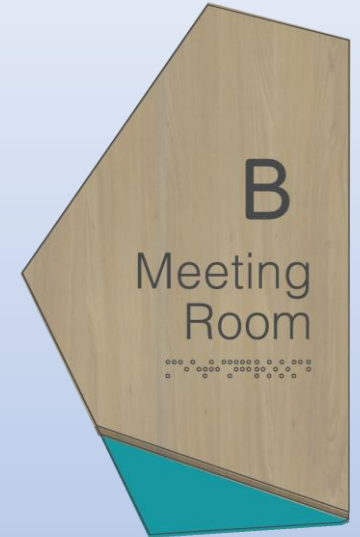
BROCK UNIVERSITY



- Brock to have office signs with plexi signs with plexi window for employee name printed on paper



**HALTON DISTRICT
SCHOOL BOARD**



TECHPLACE

- Right and Left orientation of sign
- Sign to be located on wall adjacent to latch side of the door
- 9 3/8" x 5 3/4"
- Text to be aligned to flat edge of sign

Thank you

Questions?

Michael Otter, P. Eng.

Project Manager, Facilities & Buildings

Environment, Infrastructure and Community Services

E: michael.otter@burlington.ca