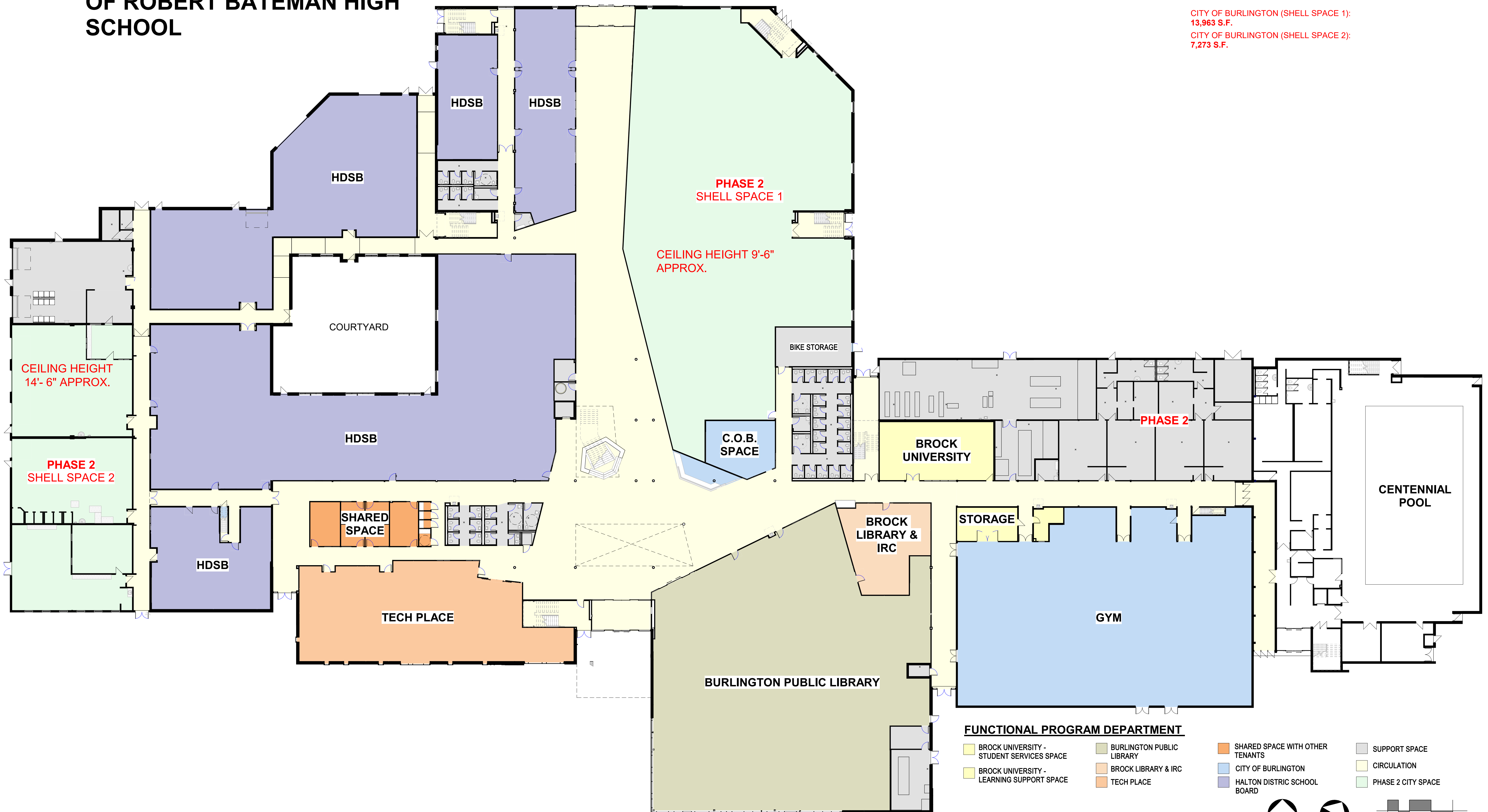


RENOVATION AND CONVERSION OF ROBERT BATEMAN HIGH SCHOOL

PHASE 2: LEASEABLE GROSS AREAS

CITY OF BURLINGTON (SHELL SPACE 1):
13,963 S.F.
CITY OF BURLINGTON (SHELL SPACE 2):
7,273 S.F.

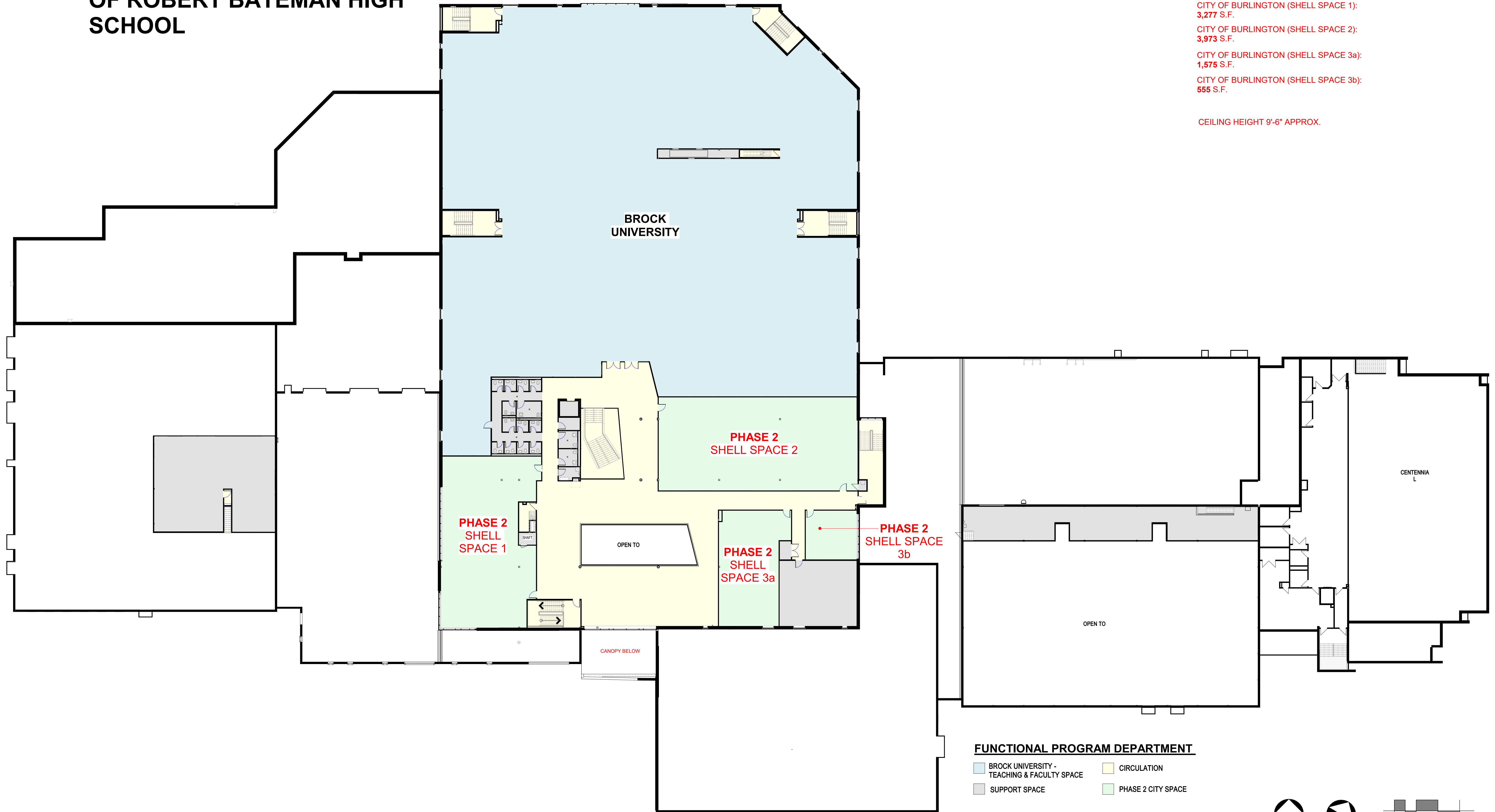


OVERALL GROUND FLOOR PLAN - PHASE 1



SCALE: As indicated
DATE: APRIL 18, 2023

RENOVATION AND CONVERSION OF ROBERT BATEMAN HIGH SCHOOL



PHASE 2: LEASEABLE GROSS AREAS

CITY OF BURLINGTON (SHELL SPACE 1):
3,277 S.F.

CITY OF BURLINGTON (SHELL SPACE 2):
3,973 S.F.

CITY OF BURLINGTON (SHELL SPACE 3a):
1,575 S.F.

CITY OF BURLINGTON (SHELL SPACE 3b):
555 S.F.

CEILING HEIGHT 9'-6" APPROX.

FUNCTIONAL PROGRAM DEPARTMENT

- BROCK UNIVERSITY - TEACHING & FACULTY SPACE
- SUPPORT SPACE
- CIRCULATION
- PHASE 2 CITY SPACE

OVERALL SECOND FLOOR PLAN - PHASE 1



SCALE: As indicated
DATE: April 18, 2023