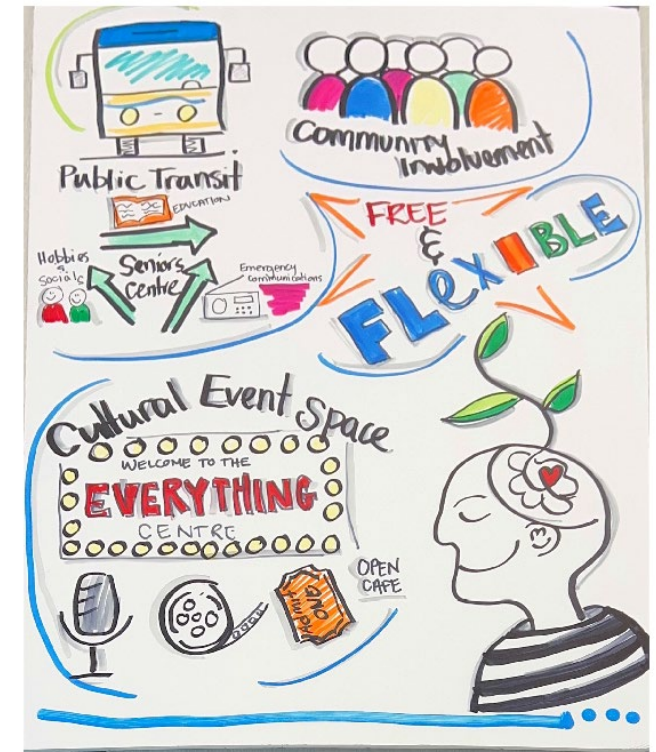
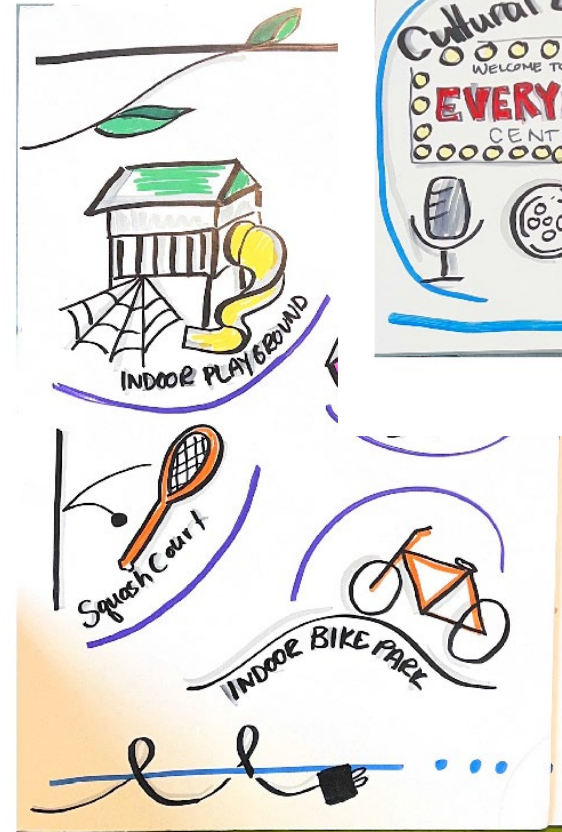
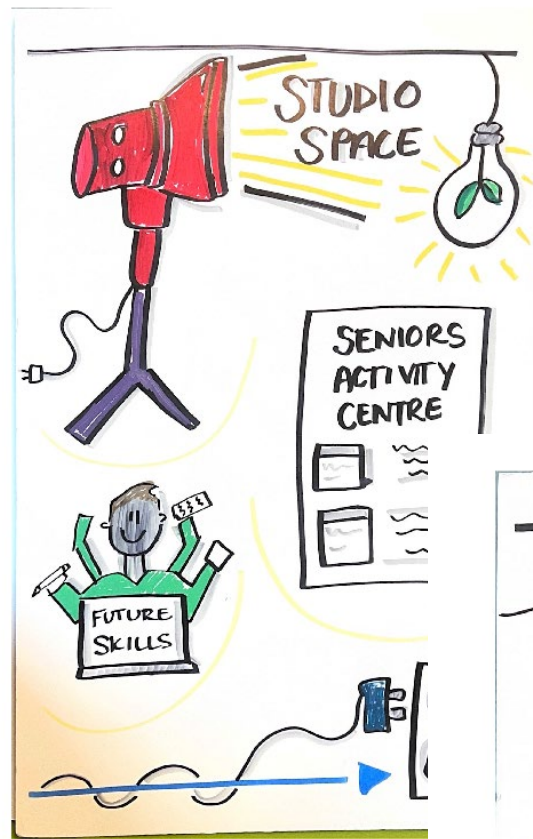


# Community Vision for Robert Bateman Community Centre

An architectural rendering of the Robert Bateman Community Centre. The building features a modern design with a prominent, dark, curved roofline and large glass windows. The facade is primarily dark brown or black. To the left, a section of the building has a lighter, wood-grain textured wall. The entrance area is visible with several people walking. The foreground shows a paved plaza with some landscaping, including trees and shrubs. The background is a clear blue sky.

# What we heard from the Community



# What we heard from not for profits or business

---

- Arts and Culture – exclusive creative spaces
- Day Care – preschool, elder and respite care
- Food – offering this service in the centre
- Offices – physical therapy, dental and sport organizations
- Science and technology
- Skills/Trade Development
- Social Services Support and Offices





# Social Anchor-Pilot

---

- Tansley Wood Pilot
- Welcoming spaces for people to enjoy where people can make connections and express their social needs
- Included in the pilot is shower access, use of rooms and facilities not booked, including the gyms
- Food pantry and potential community kitchen or warming area



# Next Steps

---

- Are there any ideas that committee does not want to see in the facility?
- Ask the community to prioritize the uses and then start and RFP process to influence phase 2 of Bateman design for opening in 2027.
- Pilot Social Anchor and space at Tansley Woods



WHAT'S  
NEXT?