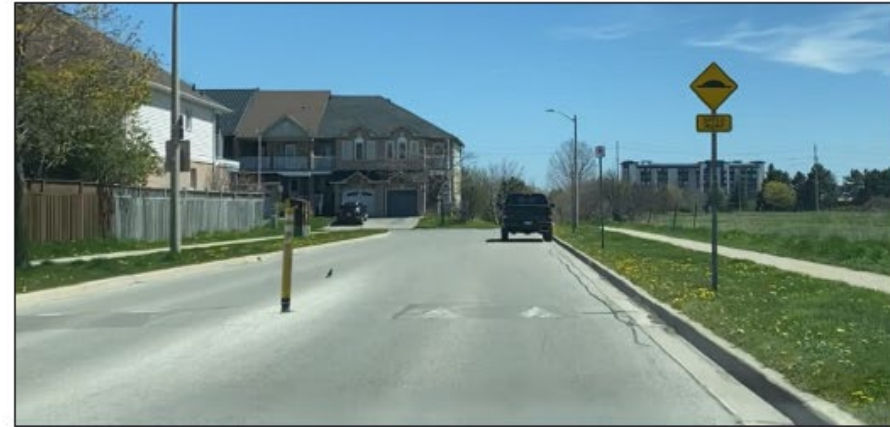


# Sheldon Creek Neighbourhood Traffic Safety Review



Presented By:

Chris King  
Manager of Transportation Operations

# Project Overview

- Study initiated via a July 6, 2021 motion memo (CPRM-05-21 / SD-22-21)
- CIMA+ Consulting was retained to conduct the study in May 2022
- Scope included:
  1. Review background information
  2. Perform studies/data collection
  3. Public consultation
  4. Assess data and develop alternatives and recommendations
  5. Document findings
  6. Report to council (TS-03-24)

# Project Overview

- Neighbourhood bordered by Mainway / Appleby Line / Upper Middle Road / Sheldon Creek Woodlot
- 4 entry points, 2 parks, Retirement Centre, K-8 private school, 2 child care centres
- In service review, reviewing existing conditions
- All streets 40 km/h except Corporate Drive and Tree Court (50 km/h)



# Data Collection

- 7 Intersection turning movement and pedestrian counts (8 hour)
- 22 Automatic traffic recorder counts (24 hours over 7 days)
- 4 Location origin destination study (7am-9am and 3pm-6pm)
- 11 Stopping compliance studies
- Parking Study (conducted on 2 days from 7pm – 9pm)
- Collision Review
- Observations (signage and lighting reviews)
- Review of historical concerns

# Key Data Findings

- Speeds in the neighbourhood were acceptable likely due to parked vehicles narrowing the driving lane (85<sup>th</sup> percentile speeds between 21 km/h and 46 km/h)
- Stopping compliance issues and a pedestrian injury collision were noted at Imperial Way and Ironstone Drive
- Parking demand and parking enforcement are concerns
- Cut through traffic occurred on Lampman Avenue and Ironstone Drive but the overall numbers were low (less than 11 vehicles per hour)
- No additional locations warranted All-Way Stops

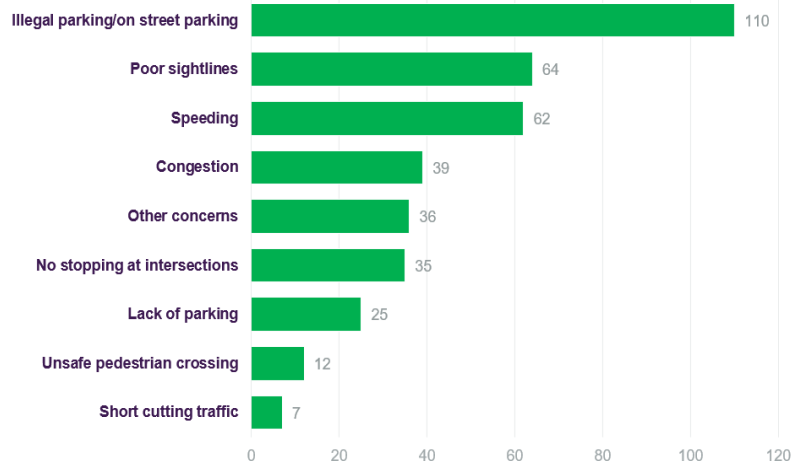
# Public Consultation

## Get Involved Burlington

- Direct Mailers to all homes in the Neighbourhood informing of the study
- Get Involved Burlington Project site
  - 981 visits during the project
  - 23 questions asked / 116 map pins generated / 70 surveys completed
- 2 Public meetings
  - June 2022 – Introduce the project (53 attendees and 38 questions asked)
  - March 2023 – Present recommendations and next steps (20 attendees and 53 questions asked)

# Public Consultation

## Identified Issues

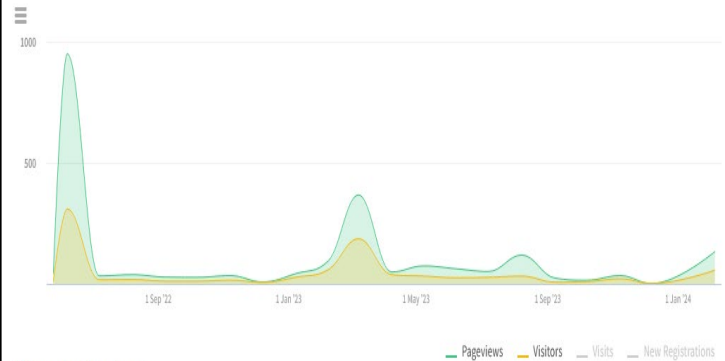


## TRAFFIC

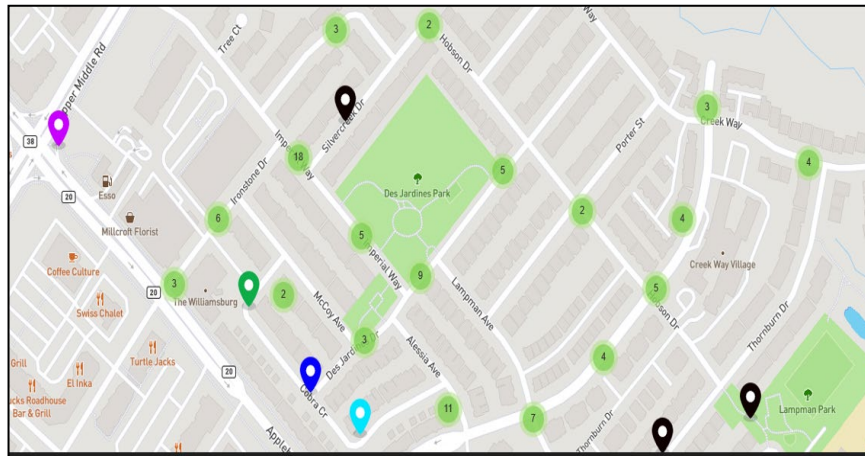
### Visitors Summary

Get involved Burlington from 08 Mar '18 to 30 Jan '24

DAILY MONTHLY



\* Select a section of the graph to zoom



**Feb 5, 2024**

[Final report](#) presented to City Council at Committee of Whole meeting

Requests to delegate to this meeting can be made by completing the online delegation registration form at [www.burlington.ca/delegate](http://www.burlington.ca/delegate), by submitting a written request by email to the Office of the City Clerk at [clerks@burlington.ca](mailto:clerks@burlington.ca) or by phoning 905-335-7600, ext. 7481 by noon the Friday before the meeting is to be held.

# Key Recommendations

- Install pedestrian crossover at Des Jardines Drive and Lampman Avenue
- Implement Traffic calming at Imperial Way and Ironstone Drive
- Rectify maintenance related items
- Parking Improvements
- Implement ladder style crossings at key intersections
- Implement an area 40 km/h speed limit through the neighbourhood
- Review street light levels at 2 locations



# 1989 Appleby Line

- Concerns relating to a proposed multi-family residential development (1989 Appleby Line) adjacent to the neighbourhood were identified
- Work was occurring in tandem during this in service neighbourhood review and the development.
- Funding has been secured from the developer to study the traffic impacts (post occupancy) and to implement mitigative measures, as necessary.
- The vast amount of data collected in the Sheldon Creek NTMP will serve as a baseline to inform on future traffic pattern changes.

Questions?