

Flood Hazard Impacts and Mitigation Assessment

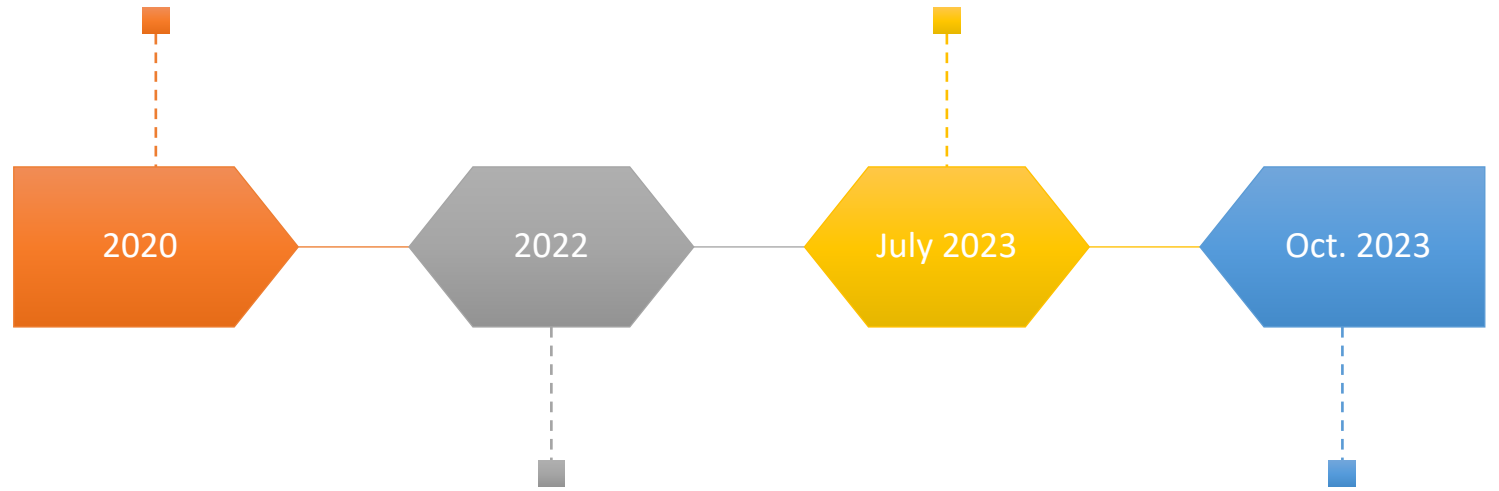
Committee of the Whole
Dec 2, 2024

City of
Burlington
&
Conservation
Halton
“A Combined
Effort”

- Background
- Flood Hazards in the Burlington GO MTSA and Downtown
- Study Areas - Flood Hazard Impacts and Mitigation Assessment
- Impact Assessments & Modelling
- Next Steps

Background & Phase 2 Flood Study

Phase 1 Flood Hazard and Scoped Stormwater Management Assessment (Mobility Hubs Study)

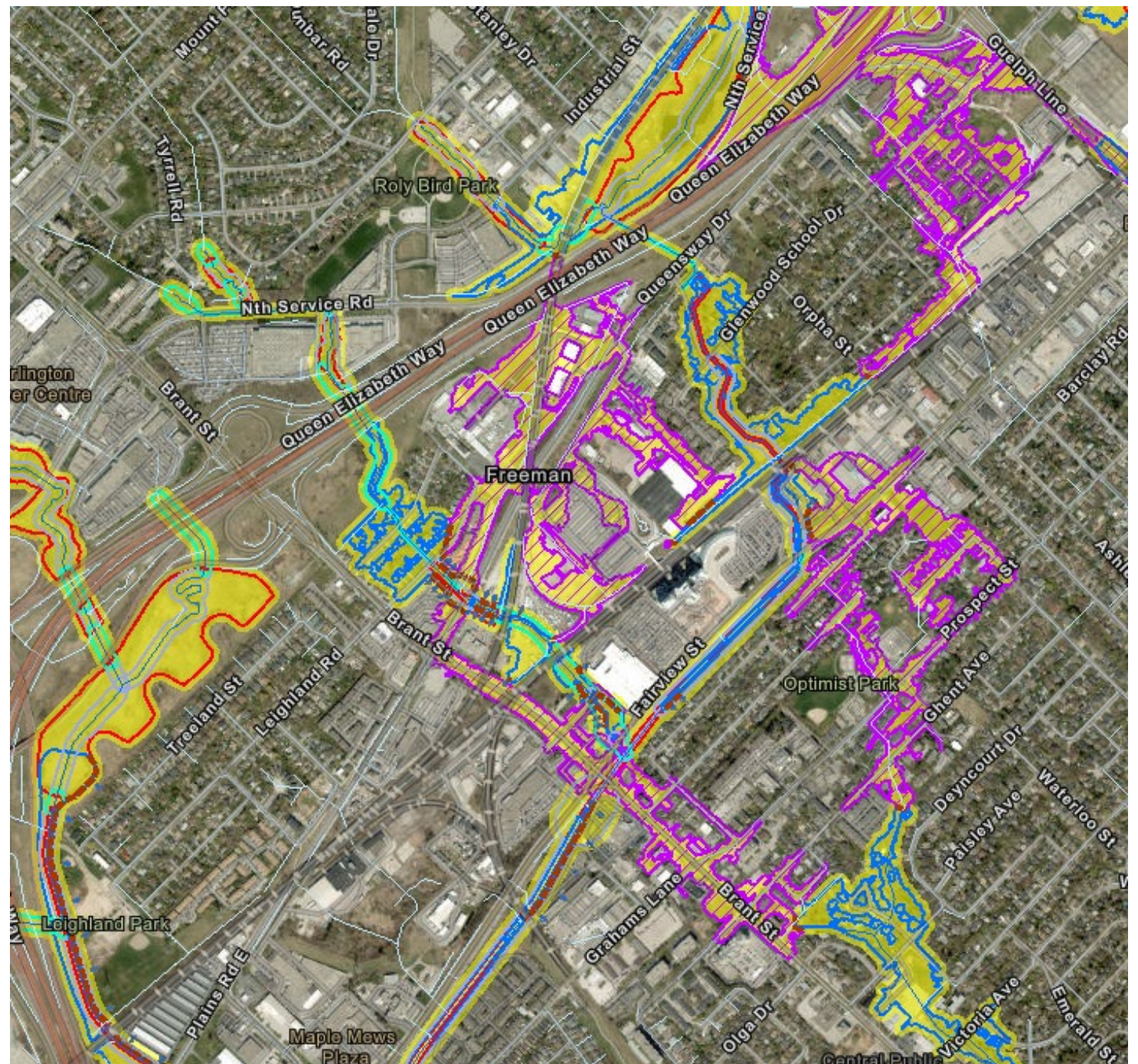


City Council received the finalized report

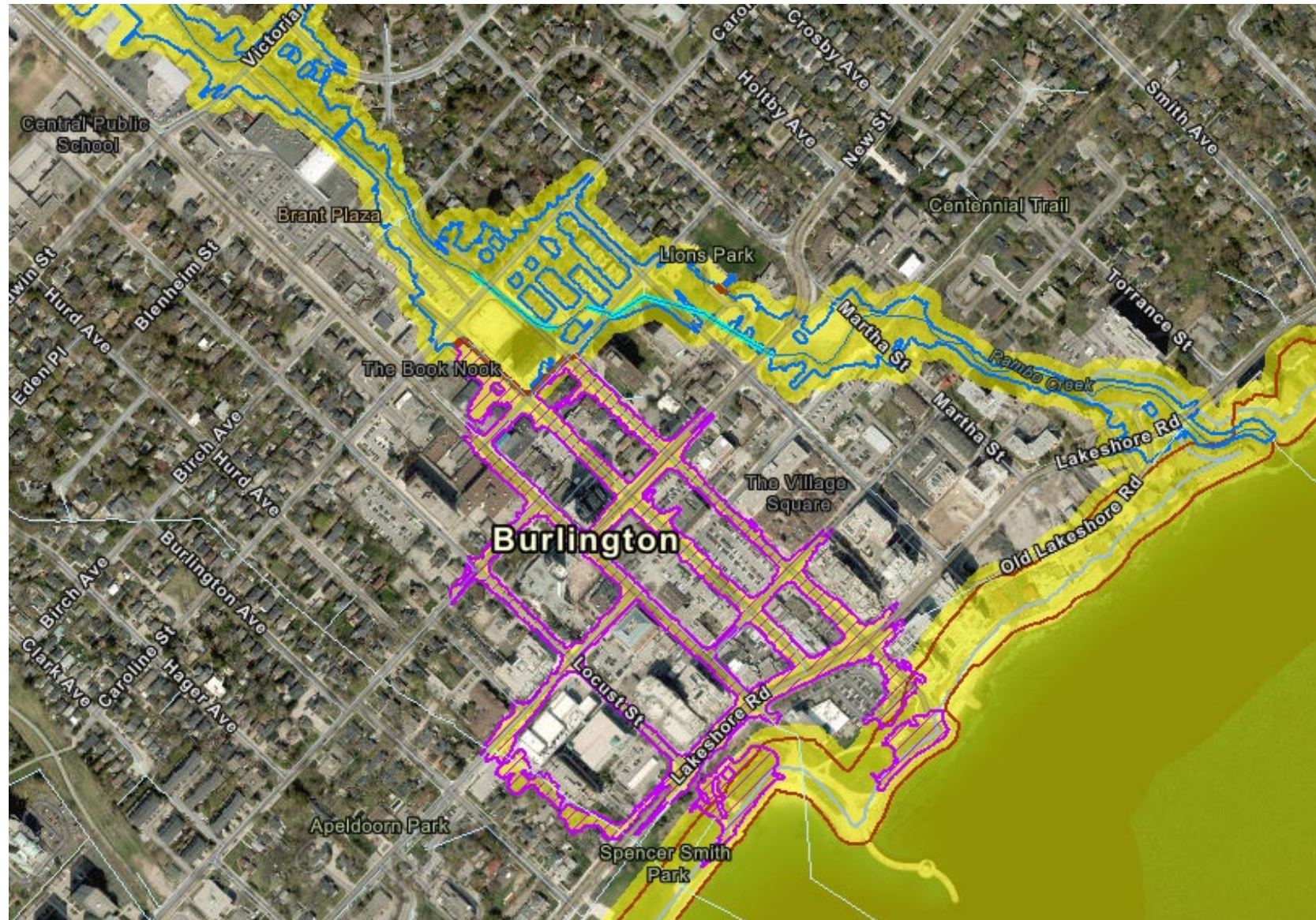
Phase 2 MTSA Flood Hazard Assessment, Burlington GO and Downtown

CH Board adopted the updated flood hazard mapping as CH's Approximate Regulation Limit Mapping.

Flood Hazards in the Burlington GO MTSA



Flood Hazards in the Burlington Downtown



Flood Hazard Impacts and Mitigation Assessment

Part 1

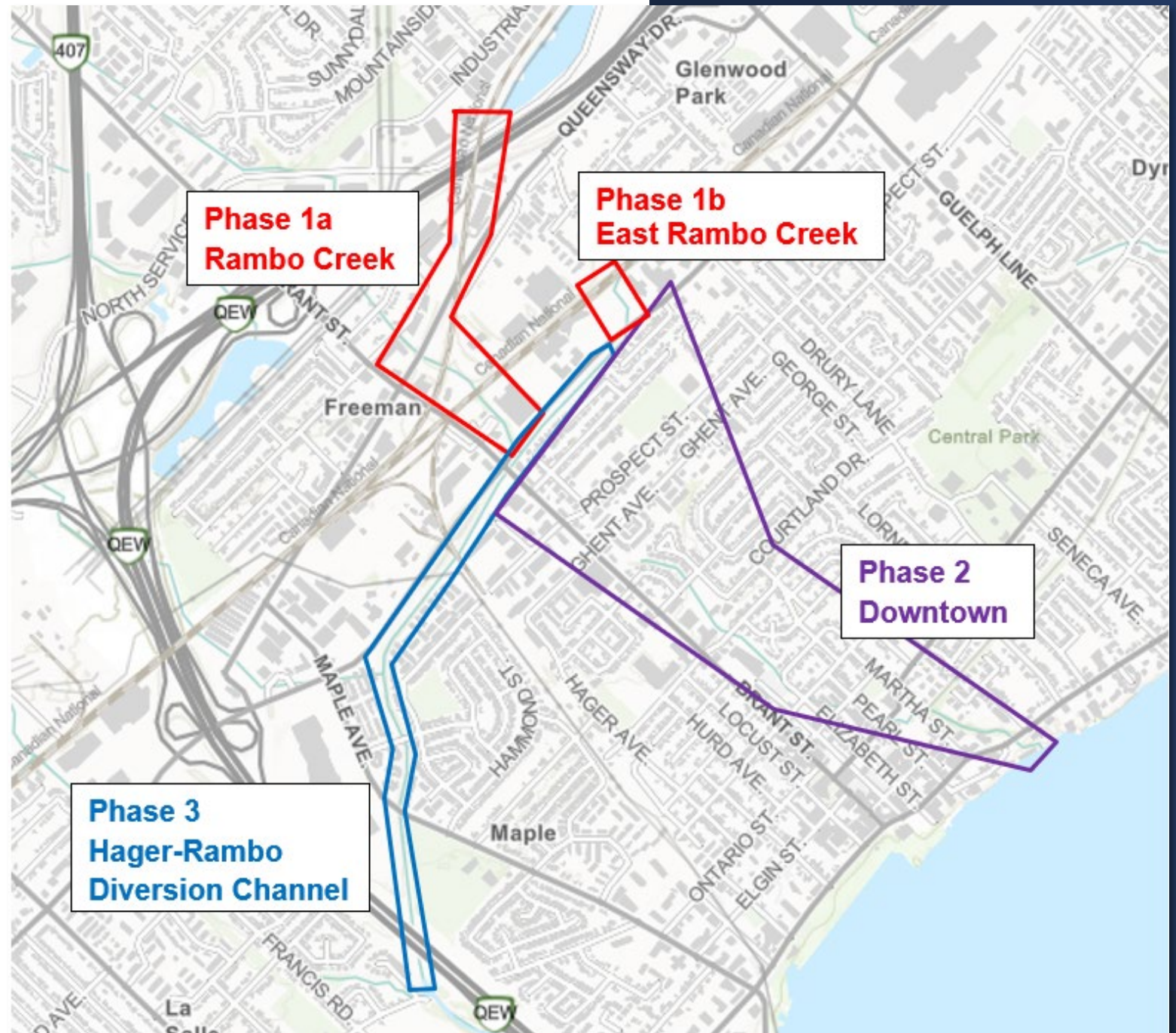
2023 - Initiated impact analysis

Purpose of the analysis was to identify potential infrastructure upgrades that could minimize flood hazards.

Divided into 4 areas for study.

Study Area

- City of Burlington:
 - Phase 1a
 - Phase 2
- Conservation Halton:
 - Phase 1b
 - Phase 3



Impact Assessment Approach

Various iterations were examined to identify infrastructure upgrade alternatives in all 4 phases.

The following potential upgrades were suggested for more detailed engineering assessment.

- Rambo Creek: culvert upgrades identified north of Fairview St
- East Rambo Creek: channel upgrade north of Fairview St.
- Hager-Rambo Diversion Channel: further assessment necessary for channel capacity, culverts and bridges.
- Downtown: Rambo Creek channel and/or creek enclosure upgrades.

Sequencing of upgrades very important.

Flood Hazard Impacts and Mitigation Assessment

Part 2

2023 - Initiated focused impact analysis, specifically for Rambo Creek in the Downtown.

Purpose of the analysis was to identify potential alternatives for infrastructure upgrades that could minimize flood hazards and possibly proceed in the near future.

Next Steps

Continue updating Flood Hazards mapping

Continue to engage with the Development Community

Rambo Creek – Downtown Flood Mitigation Environmental Assessment

Stormwater Master Plan

- Hydrologic & Hydraulic watershed modelling updates
- Further assessment of stormwater infrastructure

City and CH staff are committed to working together on the next steps and any further initiatives that are identified through this continued work.