

The Corporation of the City of Burlington

City of Burlington By-law 30-2025

A by-law to amend Burlington's Ward Boundaries
File: LLS-29-25

Whereas Section 222 of the *Municipal Act, 2001*, S.O. 2001, c. 25, as amended, provides the authority for a municipality to divide or re-divide the municipality into wards or to dissolve existing wards; and

Whereas following a comprehensive ward boundary review conducted by an independent consultant, City Council on May 20, 2025, considered the report titled, "2024/2025 Council Composition and Ward Boundary Review Final Report" and approved a new City of Burlington ward boundary structure to take effect for the 2026 municipal election; and

Whereas the Council of the City of Burlington deems it prudent at this time to retain a local Council comprised of one Mayor and six ward Councillors;

Now therefore the Council of the Corporation of the City of Burlington hereby enacts as follows:

1. That the new ward boundaries as shown in Schedule: 1 Ward Boundaries for the City of Burlington, which is attached hereto and forms part of this by-law, are established.
2. That pursuant to Section 222 (8) of the *Municipal Act, 2001*, S.O. 2001, c. 25, as amended, the new ward boundaries shall come into force on the day the new Council of The Corporation of City of Burlington is organized following the 2026 municipal election.
3. Pursuant to Section 222 (9) of the *Municipal Act, 2001*, S.O. 2001, c. 25, as amended, the 2026 municipal election shall be conducted as if this by-law was already in force.
4. If, for any reason, any provision of this by-law is held to be invalid, it is hereby declared to be the intention of City Council that all the remainder of this by-law shall continue in full force and effect until repealed, re-enacted, amended or modified.

5. By-Law Number 90-2005 is repealed and replaced by this by-law as of the date of this by-law coming into force.

Enacted and passed this 20th day, of May, 2025.

Deputy Mayor Kelvin Galbraith _____

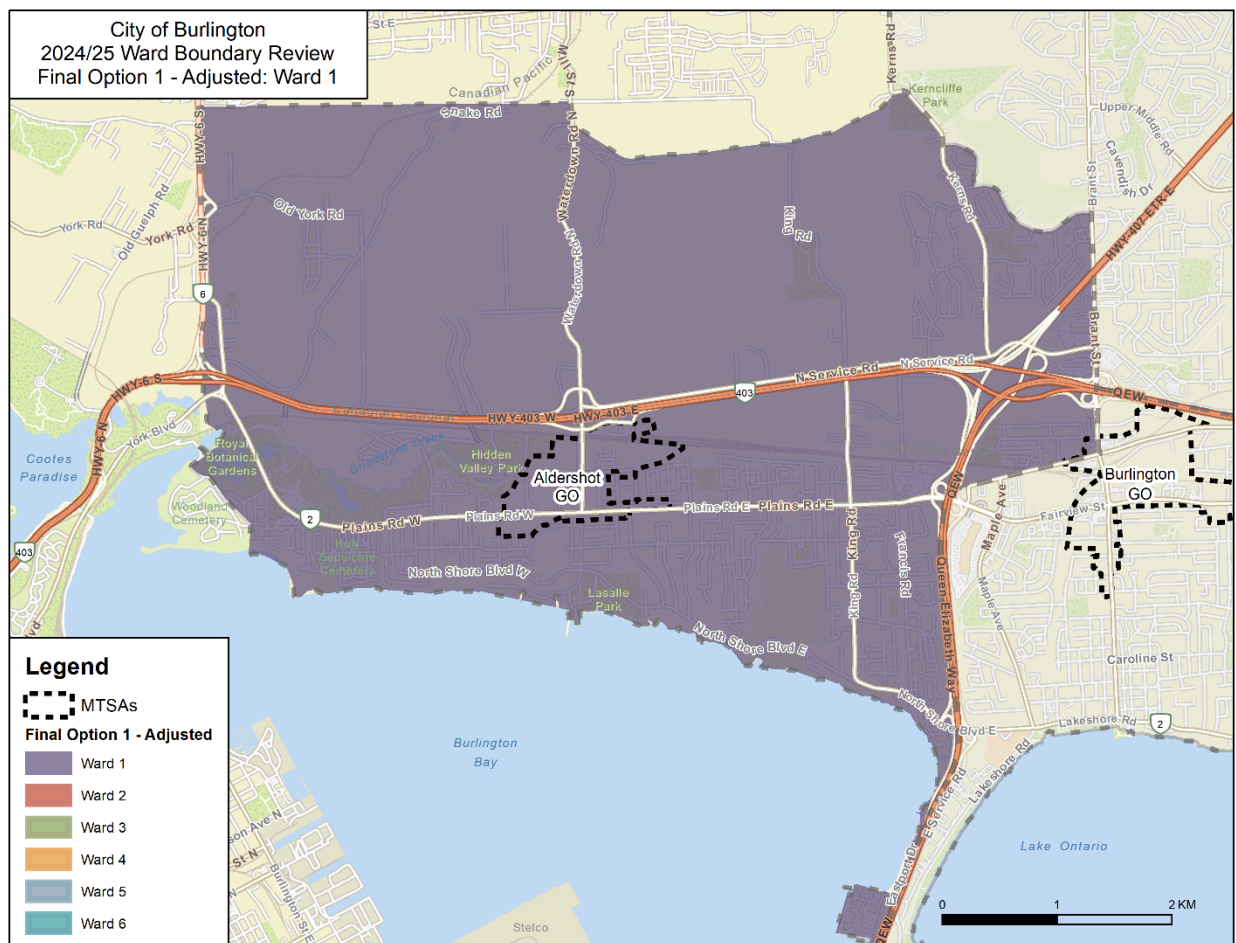
City Clerk Samantha Yew _____

Schedule '1'

Ward boundaries for the City of Burlington

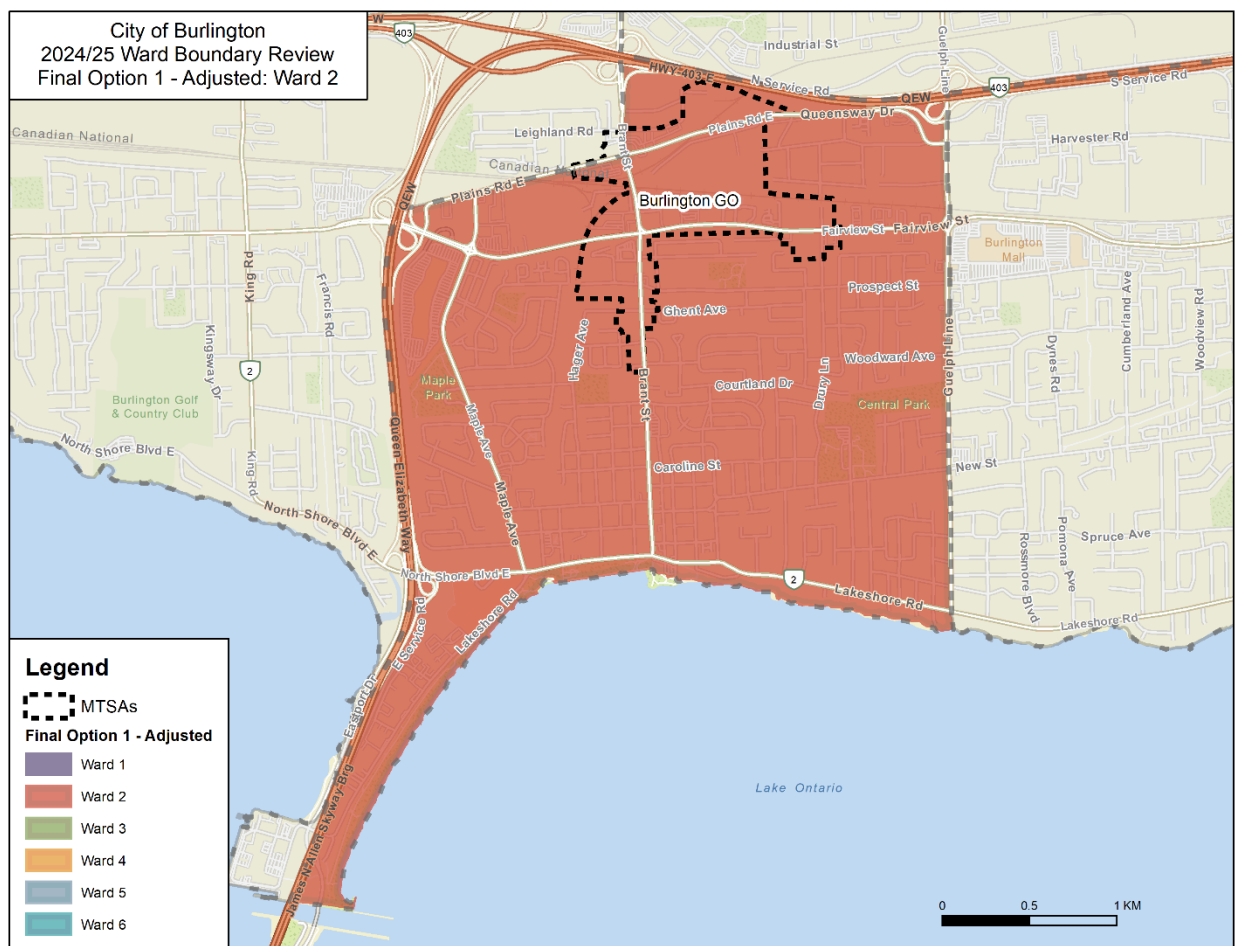
Ward 1:

Beginning at the point where the municipal boundary between the City of Burlington and the City of Hamilton intersects with the centre line of Highway 6, then in an easterly direction along the municipal boundary between the City of Burlington and the City of Hamilton to the centre line of Kearns Road, then in a southerly direction along the centre line of Kearns Road to Tyandaga Creek, then in southerly and easterly direction along Tyandaga Creek to the centre line of Brant Street, then in a southerly direction along the centre line of Brant Street to Plains Road East, then in a westerly direction along the centre line of Plains Road East to the median of the Queen Elizabeth Way, then in a southerly direction along the median of the Queen Elizabeth Way to the municipal boundary between the City of Burlington and the City of Hamilton, then in a westerly direction along the shoreline of Burlington Bay to the municipal boundary between the City of Burlington and the City of Hamilton, then in a northerly direction to the point of beginning.



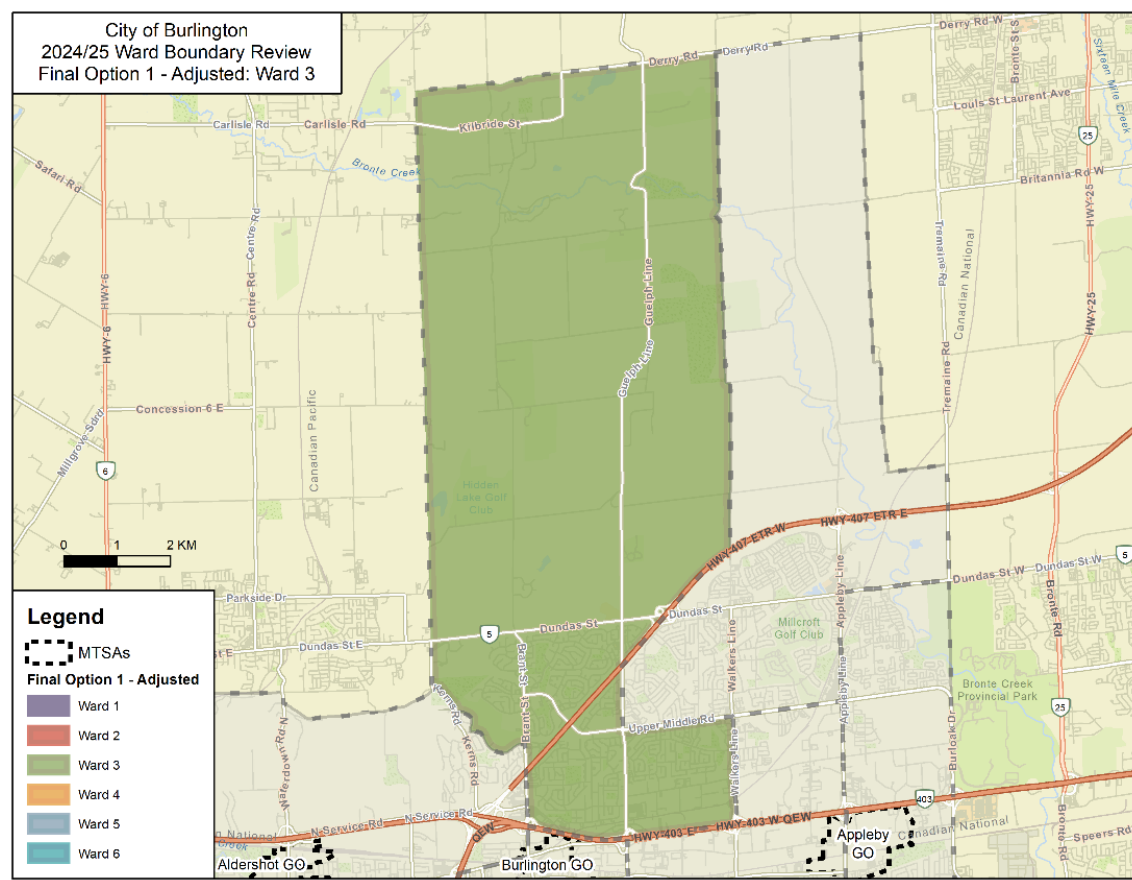
Ward 2:

Beginning at the point where the centre line of Plains Road East intersects with the median of the Queen Elizabeth Way, then in an easterly direction along the centre line of Plains Road East to the centre line of Brant Street, then in a northerly direction along the centre line of Brant Street to the median of Highway 403, then in an easterly direction along the median of Highway 403 to the centre line of Guelph Line, then in a southerly direction along the centre line of Guelph Line to the shoreline of Lake Ontario, then in a westerly and southerly direction along the shoreline of Lake Ontario to the municipal boundary between the City of Burlington and the City of Hamilton, then in a northerly direction along the median of the Queen Elizabeth Way to the point of beginning.



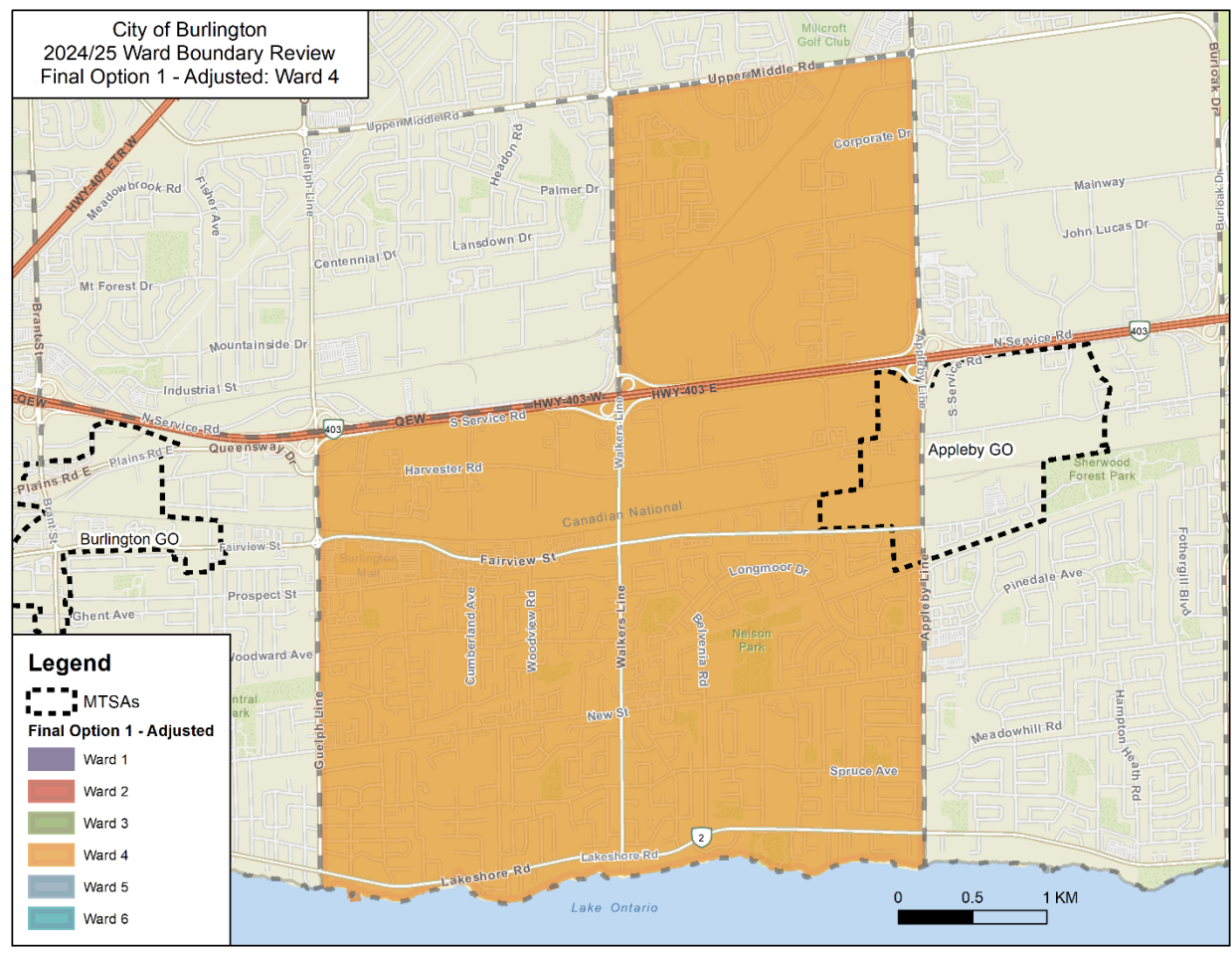
Ward 3:

Beginning at the point where the municipal boundaries of the City of Burlington, the City of Hamilton and the Town of Milton meet at Milborough Line and Derry Road, then in an easterly direction along the centre line of Derry Road (the municipal boundary between the City of Burlington and the Town of Milton) to a line extended north from the centre line of Walkers Line to Derry Road, then in a southerly direction along that line to the centre line of Walkers Line and along the centre line of Walkers Line to the median of Highway 407, then in a westerly direction along the median of Highway 407 to the centre line of Guelph Line, then in a southerly direction along the centre line of Guelph Line to the centre line of Upper Middle Road, then in an easterly direction along the centre line of Upper Middle Road to the centre line of Walkers Line, then in a southerly direction along the centre line of Walkers Line to the median of Highway 403, then in an easterly direction along the median of Highway 403 to the centre line of Brant Street, then in a northerly direction along the centre line of Brant Street to Tyandaga Creek, then in a northerly and westerly direction along Tyandaga Creek to the centre line of Kearns Road, then in a northerly direction along the centre line of Kearns Road to the municipal boundary between the City of Burlington and the City of Hamilton, then in a northerly direction along the municipal boundary between the City of Burlington and the City of Hamilton to the point of beginning.



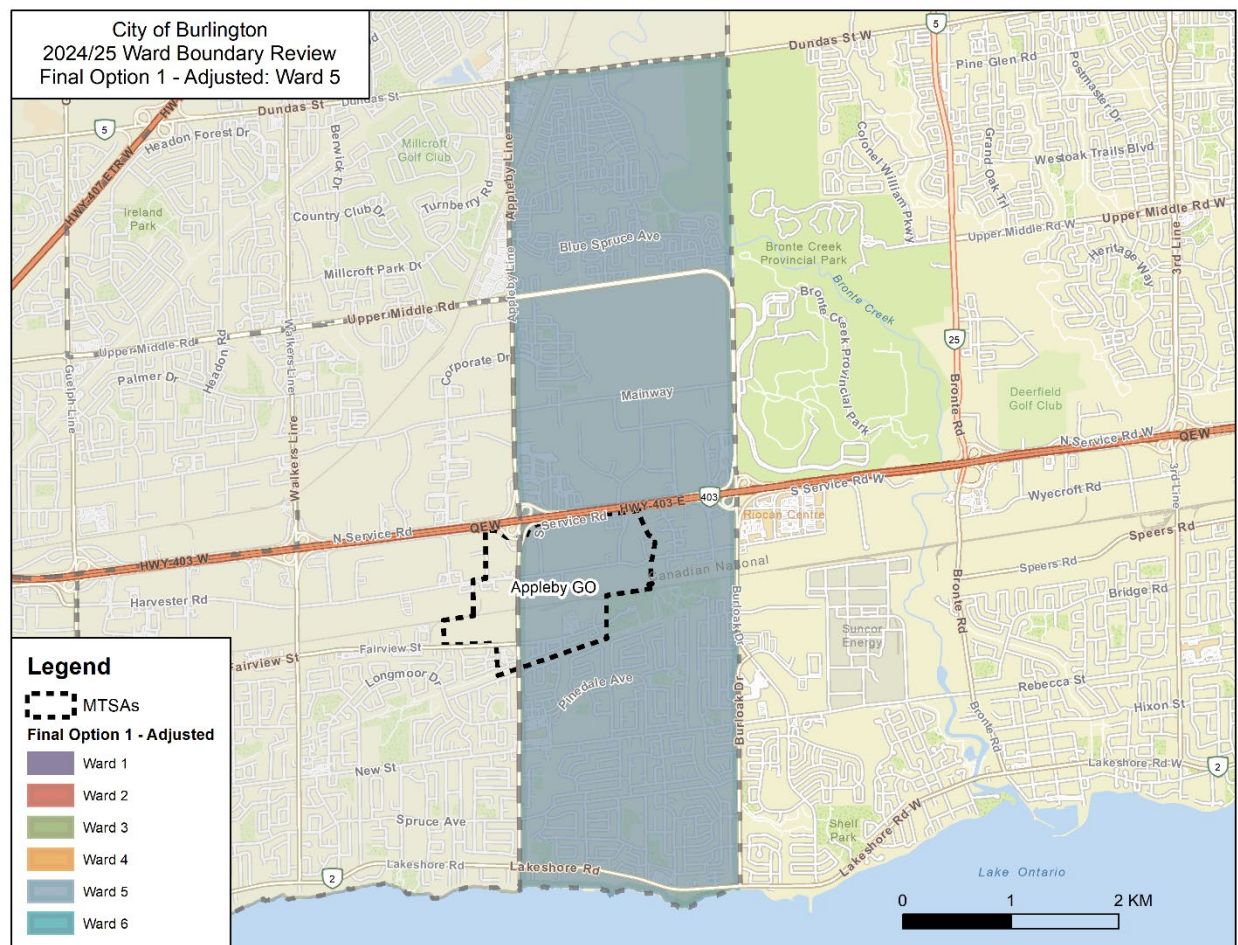
Ward 4:

Beginning at the point where the median of Highway 403 intersects with the centre line of Guelph Line, then in an easterly direction along the median of Highway 403 to the centre line of Walkers Line, then in a northerly direction along the centre line of Walkers Line to the centre line of Upper Middle Road, then in an easterly direction along the centre line of Upper Middle Road to the centre line of Appleby Line, then in a southerly direction along the centre line of Appleby Line to the shoreline of Lake Ontario, then in a westerly and southerly direction along the shoreline of Lake Ontario to the centre line of Guelph Line, then in a northerly direction along the centre line of Guelph Line to the point of beginning.



Ward 5:

Beginning at the point where the centre line of Appleby Line intersects with the centre line of Dundas Street, then in an easterly direction along the centre line of Dundas Street to the municipal boundary between the City of Burlington and the Town of Oakville, then in a southerly direction along the municipal boundary between the City of Burlington and the Town of Oakville to the shoreline of Lake Ontario, then in a westerly and southerly direction along the shoreline of Lake Ontario to the centre line of Appleby Line, then in a northerly direction along the centre line of Appleby Line to the point of beginning.



Ward 6:

Beginning at the point where a line extended north from the centre line of Walkers line to Derry Road intersects with the centre line of Derry Road (the municipal boundary between the City of Burlington and the Town of Milton), then easterly along the centre line of Derry Road to the centre line of Bell School Line (the municipal boundary between the City of Burlington and the Town of Milton), then in a southerly direction along the municipal boundary between the City of Burlington and the Town of Milton to the centre line of No.1 Side Road, then in an easterly direction along the centre line of No.1 Side Road to the centre line of Tremaine Rd, then in a southerly direction along the centre line of Tremaine Rd to the centre line of Dundas Street, then in a westerly direction along the centre line of Dundas Street to the centre line of Appleby Line, then in a southerly direction along the centre line of Appleby Line to the centre line of Upper Middle Road, then in a westerly direction along the centre line of Upper Middle Road to the centre line of Guelph Line, then in a then in a northerly direction along the centre line of Guelph Line to the median of Highway 407, then in an easterly direction along the median of Highway 407 to the centre line of Walkers Line, then in a northerly direction to the point of beginning.

