

Location Plan

Sketch No. 2
LOCATION PLAN

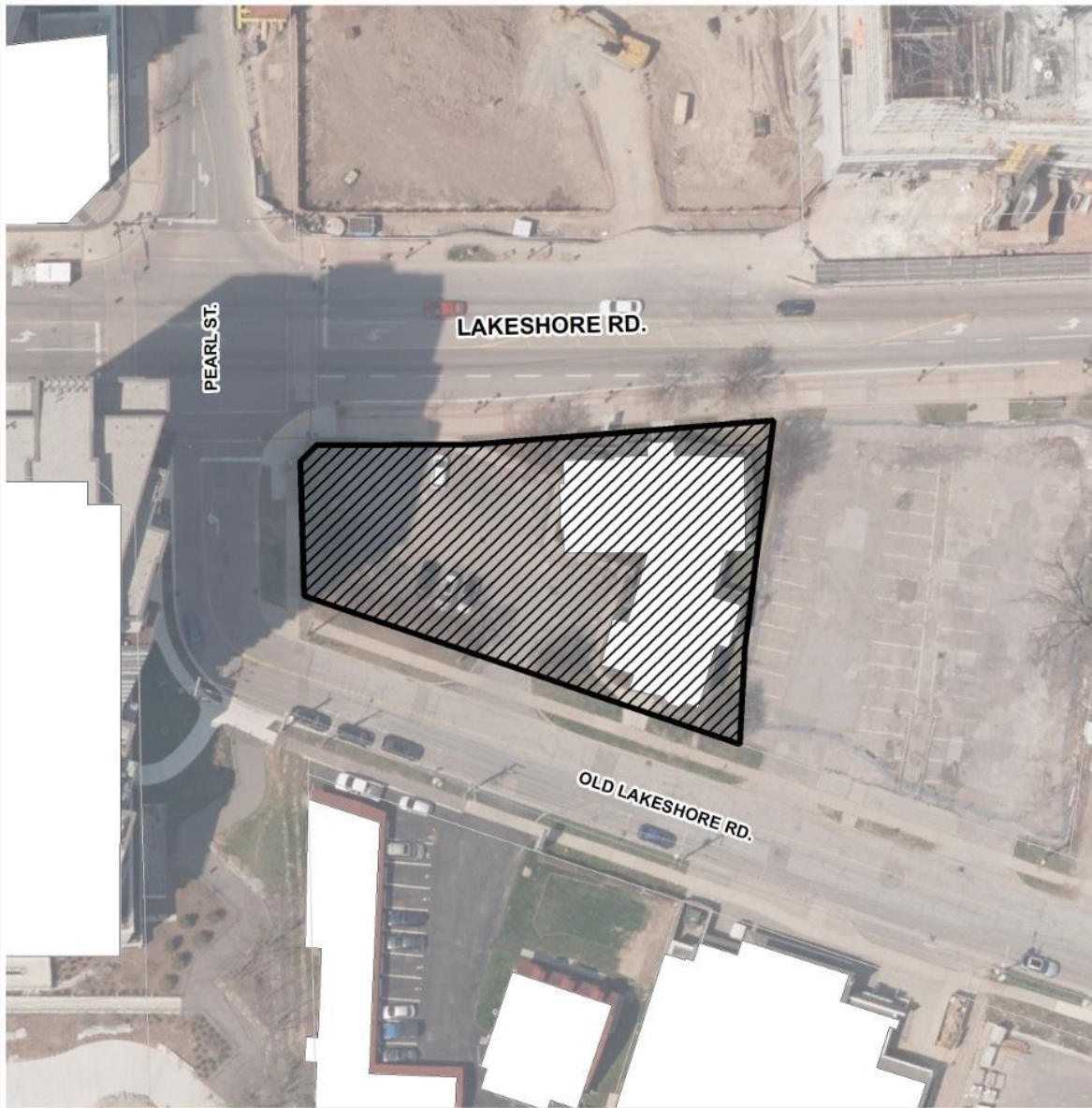


Development applications have been submitted for an Official Plan Amendment and Zoning By-law Amendment to permit the development of a 23-storey (including mechanical penthouse) mixed use building. The proposed development includes 325 m² of non-residential uses on the first floor as well as a mix of one-, two- and three-bedroom residential units for a total of 164 units. A total of 4,453 m² of amenity space (indoor and outdoor) and 161 parking spaces within 7 levels of underground parking is proposed.



SUBJECT PROPERTY

File Nos. 505-01/25 & 520-01/25



Date: August, 2025
Community Planning Department