

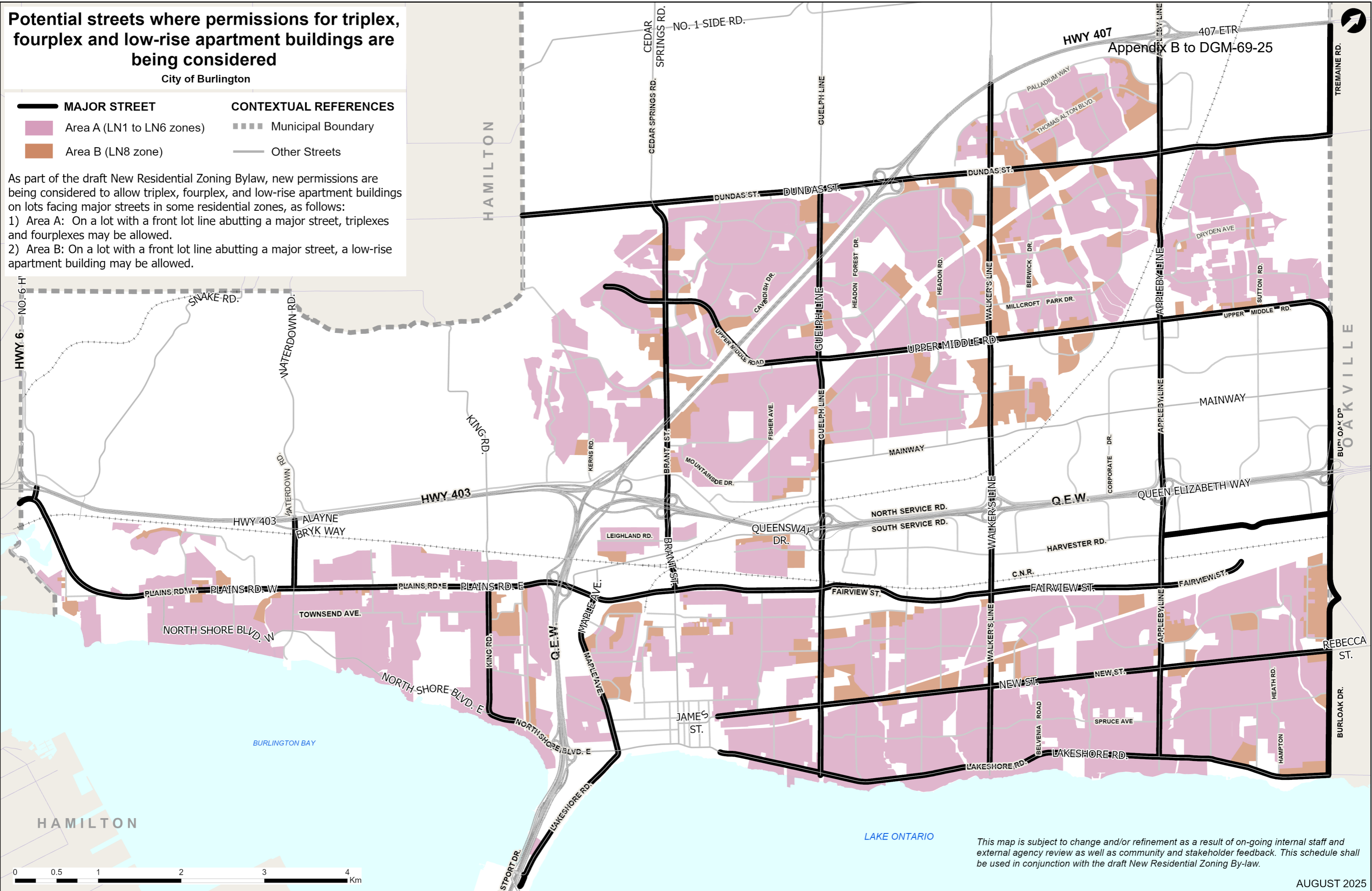
Potential streets where permissions for triplex, fourplex and low-rise apartment buildings are being considered

City of Burlington

MAJOR STREET	CONTEXTUAL REFERENCES
Area A (LN1 to LN6 zones)	Municipal Boundary
Area B (LN8 zone)	Other Streets

As part of the draft New Residential Zoning Bylaw, new permissions are being considered to allow triplex, fourplex, and low-rise apartment buildings on lots facing major streets in some residential zones, as follows:

- 1) Area A: On a lot with a front lot line abutting a major street, triplexes and fourplexes may be allowed.
- 2) Area B: On a lot with a front lot line abutting a major street, a low-rise apartment building may be allowed.



This map is subject to change and/or refinement as a result of on-going internal staff and external agency review as well as community and stakeholder feedback. This schedule shall be used in conjunction with the draft New Residential Zoning By-law.